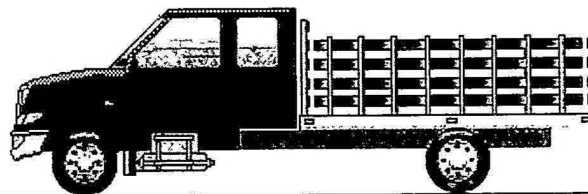


Prepared For:
 Rutherford County schools
 JoAnne Robichaud
 2240 Southpark Dr.
 Murfreesboro, TN 37128-5507
 (615)893 - 5812
 Reference ID: PH020782

Presented By:
 CUMBERLAND INTERNATIONAL TRUCKS, INC.
 Erick Creasey
 640 Massman Dr.
 NASHVILLE TN 37210 -
 (615)256-4633

Thank you for the opportunity to provide you with the following quotation on a new International truck. I am sure the following detailed specification will meet your operational requirements, and I look forward to serving your business needs.



Model Profile
2023 CV515 SFA (CV515)

AXLE CONFIG:	4X4
APPLICATION:	Stake Flat
MISSION:	Requested GVWR: 17999. Calc. GVWR: 19500. Calc. GCWR: 34000 Calc. Start / Grade Ability: 47.68% / 3.31% @ 55 MPH Calc. Geared Speed: 102.2 MPH
DIMENSION:	Wheelbase: 199.00, CA: 83.80, Axle to Frame: 49.00
ENGINE, DIESEL:	{International 6.6} EPA 2021, 350HP @ 2700 RPM, 700 lb-ft Torque @ 1600 RPM, 2900 RPM Governed Speed, 350 Peak HP (Max)
TRANSMISSION, AUTOMATIC:	{Allison 1750 RDS} 6th Generation Controls, Close Ratio, 6-Speed with Double Overdrive, with PTO Provision, Less Retarder, Includes Park Pawl, with 19,500-lb GVW and 37,500-lb GCW Max, On/Off Highway
AXLE, FRONT DRIVING:	{Dana Spicer 60-256} Single Reduction, 7,500-lb Capacity, with Hub Piloted Wheel Mounting
AXLE, REAR, SINGLE:	{Dana Spicer S16-130} Single Reduction, 15,500-lb Capacity, 190 Wheel Ends Gear Ratio: 4.30
CAB:	Conventional 6-Man Crew Cab
TIRE, FRONT:	(2) 225/70R19.5 Load Range G HYBRID HS3 (CONTINENTAL), 649 rev/mile, 87 MPH, All- Position
TIRE, REAR:	(4) 225/70R19.5 Load Range G HYBRID HS3 (CONTINENTAL), 649 rev/mile, 87 MPH, All- Position
SUSPENSION, REAR, SINGLE:	13,500-lb Capacity, Vari-Rate Springs
PAINT:	Cab schematic 100CX Location 1: 6E12, Blue Metallic (Std) Chassis schematic N/A

Description

Base Chassis, Model CV515 SFA with 199.00 Wheelbase, 83.80 CA, and 49.00 Axle to Frame.

AXLE CONFIGURATION

AXLE CONFIGURATION 4x4

Notes

: Pricing may change if axle configuration is changed.

ENGINE

ENGINE, DIESEL {International 6.6} EPA 2021, 350HP @ 2700 RPM, 700 lb-ft Torque @ 1600 RPM, 2900 RPM Governed Speed, 350 Peak HP (Max)

EMISSION, CALENDAR YEAR {International 6.6} EPA, OBD and GHG Certified for Calendar Year 2023

CARB EMISSION WARR COMPLIANCE for International 6.6 Engines

CARB IDLE COMPLIANCE Does Not Comply with California Clean Air Idle Regulations

RADIATOR Aluminum, 3-Row, Down Flow, Front to Back System, 730 SqIn Louvered, with 578 SqIn Charge Air Cooler, Includes In-Tank Oil Cooler

FAN DRIVE Viscous Type, Screw On, Rear Tether, Electronically Controlled

AIR CLEANER Single Element, with Water Separator

GOVERNOR Electronic Road Speed Type; with 79 MPH Default

REMOTE START Key Fob for Engine, Includes Theft Deterrent System

THROTTLE, HAND CONTROL Engine Speed Control for PTO; Electronic Controlled, On/Off Switch Mounted on Dash, with Steering Wheel Button Control

TRANSMISSION

TRANSMISSION, AUTOMATIC {Allison 1750 RDS} 6th Generation Controls, Close Ratio, 6-Speed with Double Overdrive, with PTO Provision, Less Retarder, Includes Park Pawl, with 19,500-lb GVW and 37,500-lb GCW Max, On/Off Highway

NEUTRAL AT STOP Allison Transmission Shifts to Neutral When Service Brake is Depressed and Vehicle is at Stop; Remains in Neutral Until Service Brake is Released

PTO LOCATION Customer Does Not Intend to Install PTO

SHIFT CONTROL PARAMETERS {Allison} 1000 or 2000 Series Transmissions, Performance Programming

TRANSFER CASE {Meritor MTC-3203} 2-Speed, Gear Drive, 3,000 lb-ft Torque Rating, Less PTO Provision, Electric Shift Control

Notes

: Transfer Case Includes 40W Synthetic Lube

REAR AXLES, SUSPENSIONS

AXLE, REAR, SINGLE {Dana Spicer S16-130} Single Reduction, 15,500-lb Capacity, 190 Wheel Ends . Gear Ratio: 4.30

SUSPENSION, REAR, SINGLE 13,500-lb Capacity, Vari-Rate Springs

AXLE, REAR, LUBE {EmGard FE-75W-90} Synthetic Oil; 1 thru 29.99 Pints

SHOCK ABSORBERS, REAR (2)

FRONT AXLES

AXLE, FRONT DRIVING {Dana Spicer 60-256} Single Reduction, 7,500-lb Capacity, with Hub Piloted Wheel Mounting

Description

AXLE, FRONT DRIVING, LUBE {EmGard FE-75W-90} Synthetic Oil; 1 thru 29.99 Pints

FRONT SUSPENSIONS

SUSPENSION, FRONT, SPRING Parabolic Taper Leaf, Shackle Type, 7,500-lb Capacity, with Shock Absorbers

CABS, COWLS, BODIES

CAB Conventional 6-Man Crew Cab

Includes

: CAB DOOR LOCKS Power Door Locks All Doors
: DOME LIGHT, CAB with OFF/DOOR/ON Settings; Located in Overhead Console
: READING LIGHT, CAB Located in Overhead Console
: STEP (4) One Step Per Door
: STORAGE POCKET, DOOR (2) Full Length, Driver and Passenger Door

ACCESS, CAB Bright Aluminum, Driver & Passenger Sides, One Step per Door, for use with Crew Cab

AIR BAG, FRONT, DRIVER SIDE

AIR BAG, FRONT, PASSENGER SIDE

AIR BAG, SIDE, DRIVER Seat Mounted, Outboard Side-Impact Airbag

AIR BAG, SIDE, PASSENGER Seat Mounted, Outboard Side-Impact Airbag

AIR BAG, SIDE CURTAIN Roof Mounted, for Front and Rear Outboard Seating Positions for Driver and Passenger Sides

AIR CONDITIONER with Heater, Single Zone

CAB INTERIOR TRIM Diamond, for Crew Cab

COLOR, INTERIOR Dark Ash

DOOR HANDLE, EXTERIOR Bright Finish

GAUGE CLUSTER English Speedometer, Includes English Odometer; Includes 4.2" Color Display with Personalization, Warning Messages and Vehicle Information

GLASS, ALL WINDOWS Deep Tinted, Rear Glass Only on Day Cab, Rear Doors and Rear Glass on Crew Cab

KEYLESS ENTRY SYSTEM REMOTE with Panic Alarm and Horn Beep Lock Confirmation, Includes Two Key Fob Transmitters

MIRRORS (2) Manual Folding and Extending, Power Adjust, Heated, Turn Signal Indicator Located in Mirror, Bright Heads and Arms, for 96" Load Width

MIRROR, INSIDE REAR VIEW with Automatic Dimming

SEAT, DRIVER High Back with Integral Headrest, 10-Way Power Adjustable, Vinyl, Power Lumbar

SEAT, TWO-MAN PASSENGER High Back with Integral Headrest in Outboard Position, Center Fold-Down Armrest with Storage, Vinyl, with Recline

SEAT, REAR BENCH, Vinyl

SUN VISOR, INTERIOR with Illuminated Mirror for Driver and Passenger Sides

WINDOW, POWER (4) in Left and Right Doors, Front and Rear

FRAMES

FRAME RAILS High Strength Low Alloy Steel (50,000 PSI Yield), Straight Top Flange with Contoured Bottom, Height Transitions from 7.375" (187.325mm) to 9.125" (231.775mm) to 7.625" (193.675mm); Width: 3.079" (78.21mm); Thickness: 0.3125" (7.94mm); 383.3" (9735.8mm) Max OAL

Description

BUMPER, FRONT Contoured, Steel, Chrome Plated, for CV and RE Bus

SKID PLATE Steel, Frame Mounted, Protects the Transfer Case from the Ground

TOW HOOK, FRONT (2) Frame Mounted

LICENSE PLATE HOLDER Includes Upper & Lower Mounting Plate Hardware, Mounted in Existing Holes in Front Bumper

WHEELBASE RANGE 185" (470cm) Through and Including 236" (600cm)

BRAKES

BRAKE SYSTEM, HYDRAULIC {Bosch} Split System, with Four Channel ABS, Traction Control, Electronic Stability Control, Hydromax Brake Booster with High Speed Master Cylinder and Trailer Sway Control

BRAKE, PARKING {Bosch} DSSA Type, 12" x 3"; for Hydraulic Brake Chassis; Foot Operated in Cab; Differential Mounted

BRAKES, FRONT {Meritor Quadraulic} Hydraulic Disc Type, with Four 64mm Diameter Pistons, 8,000-lb Capacity

DUST SHIELDS, FRONT BRAKE for Hydraulic Brakes

BRAKES, REAR {Meritor Quadraulic} Hydraulic Disc Type, with Four 64mm Diameter Pistons, 15,500-lb Capacity per Axle

DUST SHIELDS, REAR BRAKE for Hydraulic Brakes

STEERING

STEERING GEAR {Bosch S2 8014 Plus} Power

STEERING COLUMN Tilting

STEERING WHEEL 4-Spoke; 15" Dia., Black, Leather Wrapped

DRIVELINES

DRIVELINE SYSTEM {Dana Spicer} SPL100 Main Driveline, Direct Mount Transfer Case to Transmission, SPL70 Driveline to Front Axle, for 4x4

EXHAUST SYSTEMS

EXHAUST SYSTEM Horizontal, Frame Mounted Right Side, Under Rail, for Single Exhaust

ENGINE EXHAUST BRAKE for International 6.6 Engine

MANUAL REGEN Capability

ELECTRICAL SYSTEMS

ELECTRICAL SYSTEM 12-Volt for CV Model

Includes

: HAZARD SWITCH Push On/Push Off, Located on Top of Steering Column Cover

: HEADLIGHT DIMMER SWITCH Integral with Turn Signal Lever

: PARKING LIGHT PARKING LIGHT Integral with Front Turn Signal and Rear Tail Light

: TURN SIGNALS, FRONT Includes Reflectors and Solid State Flashers; Flush Mounted

: WINDSHIELD WIPER SWITCH 2-Speed with Wash and Intermittent Feature, Integral with Turn Signal Lever

ALTERNATOR {Denso SC2} Brush Type, 12 Volt, 150 Amp Capacity

BATTERY BOX Steel, with Plastic Cover, 2 Battery Capacity, Parallel to Rail, 28" Wide, Mounted Left Side Under Cab

BATTERY SYSTEM {VARTA} Maintenance-Free, (2) 12-Volt 1300CCA Total, Top Threaded Stud

Description

BODY BUILDER WIRING Rear of Frame; Includes One Sealed Connector for Separate Ground/Backup/ Left and Right Hand Turn, Left and Right Hand Tail/Stop/ Accessory Power and Combined for Left and Right Hand Stop/Turn

CAMERA SYSTEM, REAR VIEW Includes Camera, Mounting, Wiring and Interface to the Monitor, for the Back-up Camera System

CLEARANCE/MARKER LIGHTS (5) Amber LED Lights, Flush Mounted on Cab

COMPACT DISC PLAYER with MP3

FOG LIGHTS (2) Clear Lens, Halogen, Rectangular, with White Light Source

HEADLIGHTS Halogen, Composite Aero Design, Chrome Trim Bezel, with Daytime Running Lights

HORN, ELECTRIC (2) Disc Style

POWER INVERTER 12 Volt DC to 110 Volt AC

RADIO AM/FM/Bluetooth/USB Input/Auxiliary Input/SD Card Slot/ Apple Carplay/Android Auto/XM Satellite Compatible, with 8" Color Touch Panel Display, Voice Activated Technology

SPEAKERS (6)

STARTING MOTOR 12 Volt

STOP, TURN, TAIL & B/U LIGHTS Multi-Function, Sealed, Incandescent Stop, Turn and Tail Lights, Backup Lights with Rear Reflex Reflector, Includes License Plate Light

SWITCH, AUXILIARY 1 to 4 Latching Switches with 30-Amp Fuses

SWITCH, TOGGLE, FOR WORK LIGHT Lighted; on Instrument Panel and Wiring Effects for Customer Furnished End of Frame Light

TRAILER BRAKE CONTROL Integrated

TRAILER CONNECTION SOCKET Mounted at Rear of Frame, Wired for Turn Signals Combined with Stop, Compatible with Trailers with Combined Stop, Tail, Turn Lamps

FRONT END

FRONT END Tilting, Fiberglass, with Three Piece Construction

BUG SCREEN Mounted Behind Grille

FENDER EXTENSIONS Painted

GRILLE Chrome, with Chrome Headlight Bezels

LOGOS EXTERIOR Model Badges

SPEEDOMETER, TOOLS, MISC

GCWR RANGE GCWR Equal to or Less than 34,000-lb

PAINT SCHEMATIC, PT-1 Single Color, Design 100

PAINT TYPE Base Coat/Clear Coat, 1-2 Tone

GVWR WEIGHT CLASSIFICATION Class 5 (16,001-19,500 lbs)

FUEL TANKS

FUEL TANK Top Draw, Plastic, Rectangular, 17" Tank Depth, 40 US Gal (151L), Includes Auxiliary Draw Port and Fuel Filler Assembly, Mounted Between Frame Rails and Behind Rear Axle

DEF TANK 6.75 US Gal (26L) Capacity, Frame Mounted Outside Right Rail, Under Cab

Description**WHEELS, TIRES - FRONT**

WHEELS, FRONT {Alcoa 76543} DISC; 19.5x6.75 Rims, Mirror Polish Aluminum, 8-Stud, 275mm BC, Hub-Piloted, Flanged Nut, with Steel Hubs

(2) TIRE, FRONT 225/70R19.5 Load Range G HYBRID HS3 (CONTINENTAL), 649 rev/mile, 87 MPH, All-Position

WHEELS, TIRES - REAR

WHEELS, REAR {Alcoa 76543} DUAL DISC; 19.5" Mirror Polish Aluminum Outer Wheel and Steel Inner Wheel, 8-Stud (275MM BC) Hub Piloted, Flanged Nut, Metric Mount, 6.75 Rims; with Steel Hubs

(4) TIRE, REAR 225/70R19.5 Load Range G HYBRID HS3 (CONTINENTAL), 649 rev/mile, 87 MPH, All-Position

WHEELS MISC OPTIONS

COATING IDENTITY, FRONT WHEELS {Alcoa Dura-Bright XBR/EVO} Disc Front Wheels, Aluminum, with Vendor Applied Treatment, Not for Wide Base

COATING IDENTITY, REAR WHEELS {Alcoa Dura-Bright XBR/EVO} Disc Rear Wheels, Aluminum, with Vendor Applied Treatment, Not for Super Single/Wide Base

Services Section:**WARRANTY**

WARRANTY Standard for CV515, Effective with Vehicles Built December 3, 2018 or Later, CTS-3000A

Bed and wheel installation

B&W Companion fifth wheel

CERTIFICATE OF ORIGIN FOR A VEHICLE



A NAVISTAR COMPANY

DATE
DECEMBER 12, 2023

INVOICE NO.
231212202

VEHICLE IDENTIFICATION NO.
1HTKTSWK7PH020782

YEAR
2023

MAKE
INTERNATIONAL

BODY TYPE
CAB & CHASSIS

SHIPPING WEIGHT
9120

H.P. (S.A.E.)

G.V.W.R.
19500

NO. CYLS.
8

SERIES OR MODEL
CV515 SFA 4x4

ENGINE NAME
INTL 6.6 350HP/2900 GOV

ENGINE NO.
R1233183MXWX0395

I, the undersigned authorized representative of the company, firm or corporation named below, hereby certify that the new vehicle described above is the property of the said company, firm or corporation and is transferred on the above date and under the Invoice Number indicated to the following distributor or dealer:

NAME OF DISTRIBUTOR, DEALER, ETC.

CUMBERLAND INTL TRKS FL
2110 S. DIVISION AVE.
ORLANDO, FL 32805

* THIS VEHICLE HAS A *
* 50-STATE EMISSION SYSTEM *

It is further certified that this was the first transfer of such new vehicle in ordinary trade and commerce.

NAVISTAR, INC.

BY:

(SIGNATURE OF AUTHORIZED REPRESENTATIVE)

(AGENT)

1111 NORTHSHORE DR.
KNOXVILLE, TN 37919-3805

CITY-STATE

NAV 3192913



1HTKTSWK7PH020782

142
753673
119552
020782