



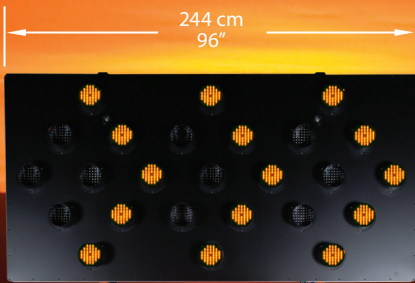
Harness the Power of the Sun

SILENT SENTINEL

ADVANCED WARNING ARROW PANELS



15 Lamp



25 Lamp



| Model | Solar Array | Lamps |
|---------|-------------|-------|
| AB-0515 | 40 Watt | 15 |
| AB-0715 | 80 Watt | 15 |

| Model | Solar Array | Lamps |
|---------|-------------|-------|
| AB-0525 | 40 Watt | 25 |
| AB-0725 | 80 Watt | 25 |

PAR 46 - LED Lamp

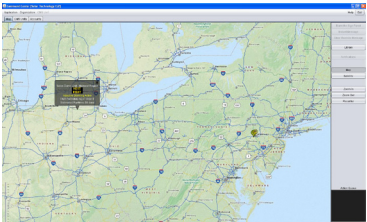
Designed and Built Exclusively by Solar Technology. Independent laboratory tests confirm our custom LED lamp is the brightest in the industry and has the greatest overall angularity.

Compared to other solar arrow board lamps, SolarTech's PAR 46 LED lamp:



- Is twice as bright
- Has superior angularity
- Provides enhanced conspicuously
- Is protected by a 10 year warranty

Remote Control and GPS Tracking*



ITS integration and fleet management
* Requires Solar Comm modem service

Control Module



Advanced Design Solid State Control Module
Microprocessor based technology for enhanced reliability. Fully-automatic fault protection.

Multi-Color LED Indicators
Display battery level, solar charger status and lamp intensity.

"Auto Track" Intensity Control.
Provides optimal visibility with minimal energy consumption.

Integral Solar Charge Controller
Fully automatic, temperature compensated. All solid state.

LAMP PANEL

| | |
|-----------------------------|--|
| Panel Size | 96" x 48" (244 cm x 122 cm) |
| Panel Construction | All aluminum with welded frame |
| Panel Finish | Matte black baked enamel finish |
| Number of Lamps | 15 or 25 |
| Lamp Intensity | 1,000 Candela (typical), 750 Candela (minimum) |
| Lamp Beam Angle | 30° horizontal x 6° vertical (minimum) |
| Lamp Construction | LED (21 per lamp) in unbreakable sealed polycarbonate housing |
| Lamp Shrouds | 360° high-impact plastic |
| Rear Panel Indicators | Three (3) LED |

TRAILER

| | |
|-------------------------------|--|
| Length Overall..... | 100" (254 cm) |
| Length excluding Tongue | 53" (135 cm) |
| Width Overall..... | 96" (244 cm) |
| Width Across Fenders | 75" (190 cm) |
| Height Traveling..... | 92" (234 cm) |
| Height Operating | 134" (340 cm) |
| Ground Clearance..... | 13.5" (34 cm) |
| Weight..... | 1,180 lbs. (535 kg) approximately |
| Hitch..... | 2" ball (50 mm) (Class II) or 2.5" (64 mm) pintle ring |
| Lifting Mechanism..... | 1,000 lb. (454 kg) capacity (minimum) automatic brake winch and cable |

ENERGY SOURCE

| | |
|--------------------------------|---|
| Operating Voltage | 12 Volts DC (nominal) |
| Battery Type | 6 volt heavy duty, deep cycle (GC-2) |
| Number of Batteries..... | Two (2) standard lead acid (flooded) with Auxiliary Batteries..... |
| Battery Capacity | Four (4) standard lead acid (flooded) 260 amp hours |
| Battery Status Indicator | with Auxiliary Batteries..... 520 amp hours |
| Solar Array Construction | Displays full charge, normal and low battery condition |
| Solar Array Power Output | Top-mounted solar panels in aluminum frame |
| Solar Charge Controller | 40 or 80 watts - field-upgradable |
| | Fully automatic, temperature compensated |

CONTROLLER

| | |
|------------------------------|---|
| Controller Circuitry | Ultra-low power solid state |
| Lamp Patterns | All standard 15 and 25 lamp flashing and sequential |
| Lamp Flash Rate | 30 per minute |
| Lamp Dimming | Manual and automatic |
| Lamp Dimming Ratio | 50%, fully dimmed at approximately five footcandles |
| Lamp Power Drivers..... | Current limited and thermal overload protected with "soft start" feature |
| Low Voltage Disconnect | 10.70 volts |
| High Voltage Disconnect..... | 15.10 volts |

OPTIONAL FEATURES AND UPGRADES

Battery Upgrades

- Four (4) standard flooded batteries
- Two (2) maintenance-free (Gel-Cell or AGM)
- Four (4) maintenance-free (Gel-Cell or AGM)

Auxiliary Battery Chargers

- 45 amp, 120 volt AC line-powered
- 40 or 55 amp, 230 volt AC line-powered

Traffic Cone Carrier

- Holds standard 18" (46 cm) and 28" (71 cm) cones

OTHER SOLAR TECH PRODUCTS

SILENT SENTINEL

Vehicle Mount Arrow Boards

SILENT MESSENGER

Full-Size Trailer-Mount Message Boards

SILENT MESSENGER II

Mid-Size Trailer and Vehicle Mount Message Boards

SILENT MESSENGER III

Small-Size Trailer and Vehicle Mount Message Boards

SILENT MESSENGER IV

Small-Size Trailer and Vehicle Mount Message Boards

SILENT ADVISOR

Low and High-Speed Application Radar Speed Trailers

INCIDENT RESPONSE TRAILER

Work Zone Trailer with Cones and Barrels

SOLAR-POWERED PORTABLE TOWER TRAILER

Platform for Cameras, Sensors and/or Lighting

SOLARTRAK

Monitoring and GPS Tracking of Construction Equipment

All models meet or exceed the standards for Flashing Arrow Panels as listed in the U.S. Federal Highway Administration (FHWA) Manual or Uniform Traffic Control Devices (MUTCD). Specifications subject to periodic updates as required without notice.

For the latest software updates, user-guides,
news and information please visit us online at:
www.solartechology.com



SOLAR TECHNOLOGY, INC.
7620 Cetronia Rd. Allentown, PA 18106
Phone: 800-475-5442 or 610-391-8600
www.solartechology.com