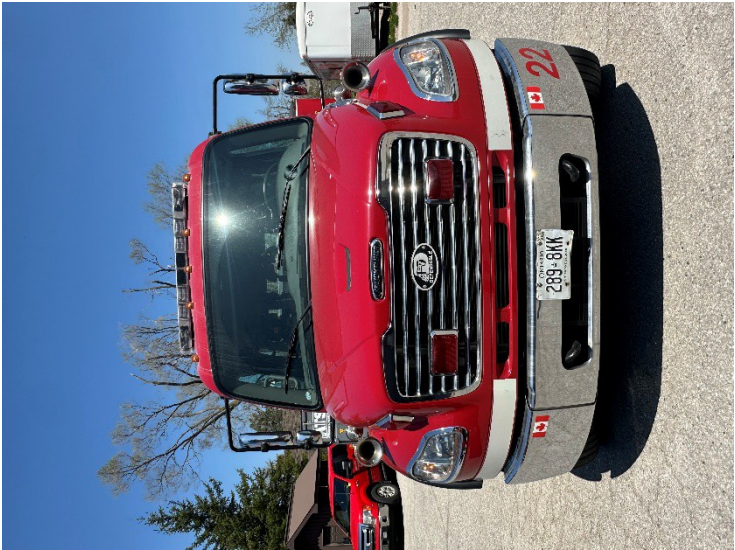


	GAWR/PWBE-RG	GAWR/PWBE-LBS	TIRES	RIMS
FRONT AXLE	5,443	12,000	11R22.5(G)	22.5x8
FIRST INT AXLE				
SECOND INT AXLE				
THIRD INT AXLE				
FOURTH INT AXLE				
FIFTH INT AXLE				
SIXTH INT AXLE				
REAR AXLE	10,432	23,000	11R22.5(G)	22.5x8

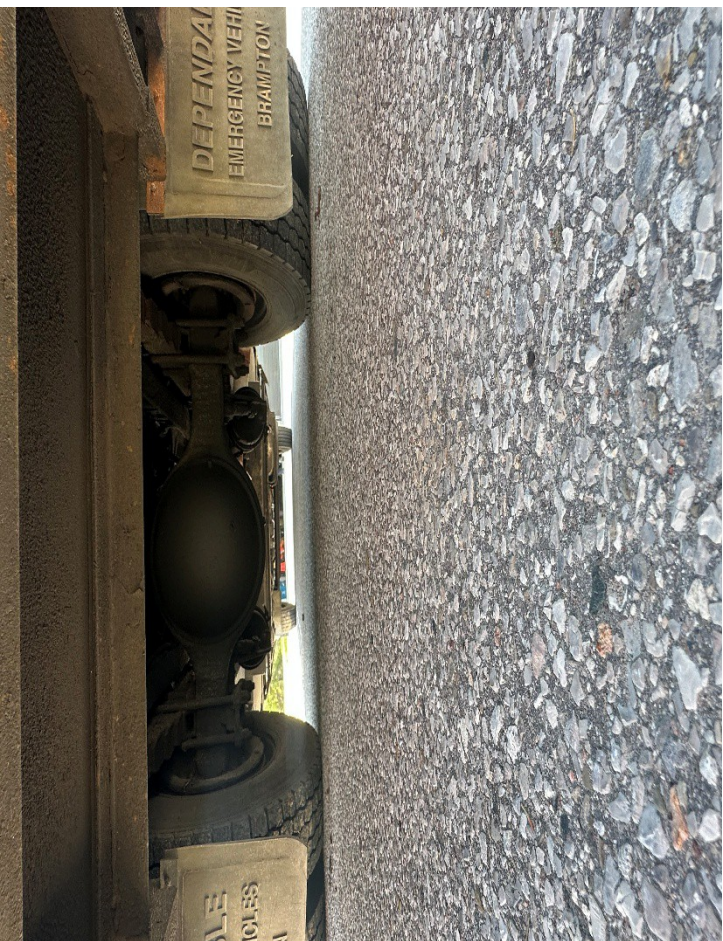
FREIGHTLINER LLC
 1FVACVBS28H237166
 09/07
 15,876
 35,000

























FIRE PUMP
CONSHOCKEN, PA

QSG100-23S

MODEL NO. / SERIAL NO.
59339

WARNING
FAILURE TO FOLLOW THE OPERATING
AND MAINTENANCE REQUIREMENTS SET
FORTH IN THE PUMP MANUAL MAY
RESULT IN SERIOUS PERSONAL
INJURY AND/OR EQUIPMENT DAMAGE.

LUBRICATION
GEAR CASE: FRONT MOUNT: SAE 10W-30
ALL OTHERS: SAE EP-80
PRIMING TANK: SAE 30



UNDERWRITERS' LABORATORIES OF CANADA
LISTED
FIRE DEPARTMENT PUMPER

NO. **6580** C

MANUFACTURE S SERIAL NO. **1735**

CHASSIS MODEL NO. **5500** DATE **NOV. 16, 1990**

PUMP RATING			
840	16PM AT	150 PSI AT	1750 RPM
550	16PM AT	200 PSI AT	1910 RPM
420	16PM AT	250 PSI AT	2080 RPM
NO LOAD GOVERNED SPEED			2600 RPM

BUILT BY: 

HUB FIRE ENGINES & EQUIPMENT LTD.
ABBOTSFORD, BRITISH COLUMBIA



