



HRB 240 T100

PARTS MANUAL

**HARRIS WASTE MANAGEMENT GROUP, INC.
340 JEKYLL ROAD
BAXLEY, GA U.S.A. 31513
(800) 447-3526**

Serial No. 8831

IMPORTANT SERVICE INFORMATION

Each baler installation is unique. Balers are tailored to meet specific requirements. The following information is important to ensure you get the correct information about a particular baler installation.

Model Number: HRB 240-T100

Serial Number: 8831

These drawings should be readily accessible, they will be used for reference information throughout the manual:

General Assembly: 8831GA

Foundation Number: 8831F

Hydraulic Number: 130464

Electrical Number: 130463

Table of Contents

SAFETY EQUIPMENT AND REFERENCE MATERIAL 1

HRB 240 ASSEMBLY 3

MAIN FRAME LINER..... 5

MAIN RAM HOLDDOWN..... 7

MAIN RAM LINER 9

EJECT RAM FRAME LINERS..... 11

EJECT RAM LINER..... 13

COMBO DOOR LINER 15

COMBO DOOR GUARD 17

LASER MOUNT ASSEMBLY 19

HOPPER DOOR ASSEMBLY 21

SHEAR BEAM ASSEMBLY 23

WIPER ASSEMBLY..... 25

HYDRAULIC POWER UNIT 27

MANIFOLD ASSEMBLY 29

PUMP/MOTOR GROUP 31

HYDRAULIC CYLINDER..... 33

COMBO DOOR AND EJECT CYLINDER 35

OPERATOR CONSOLE 37

PARTS LIST FOR MAIN CONTROL PANEL40

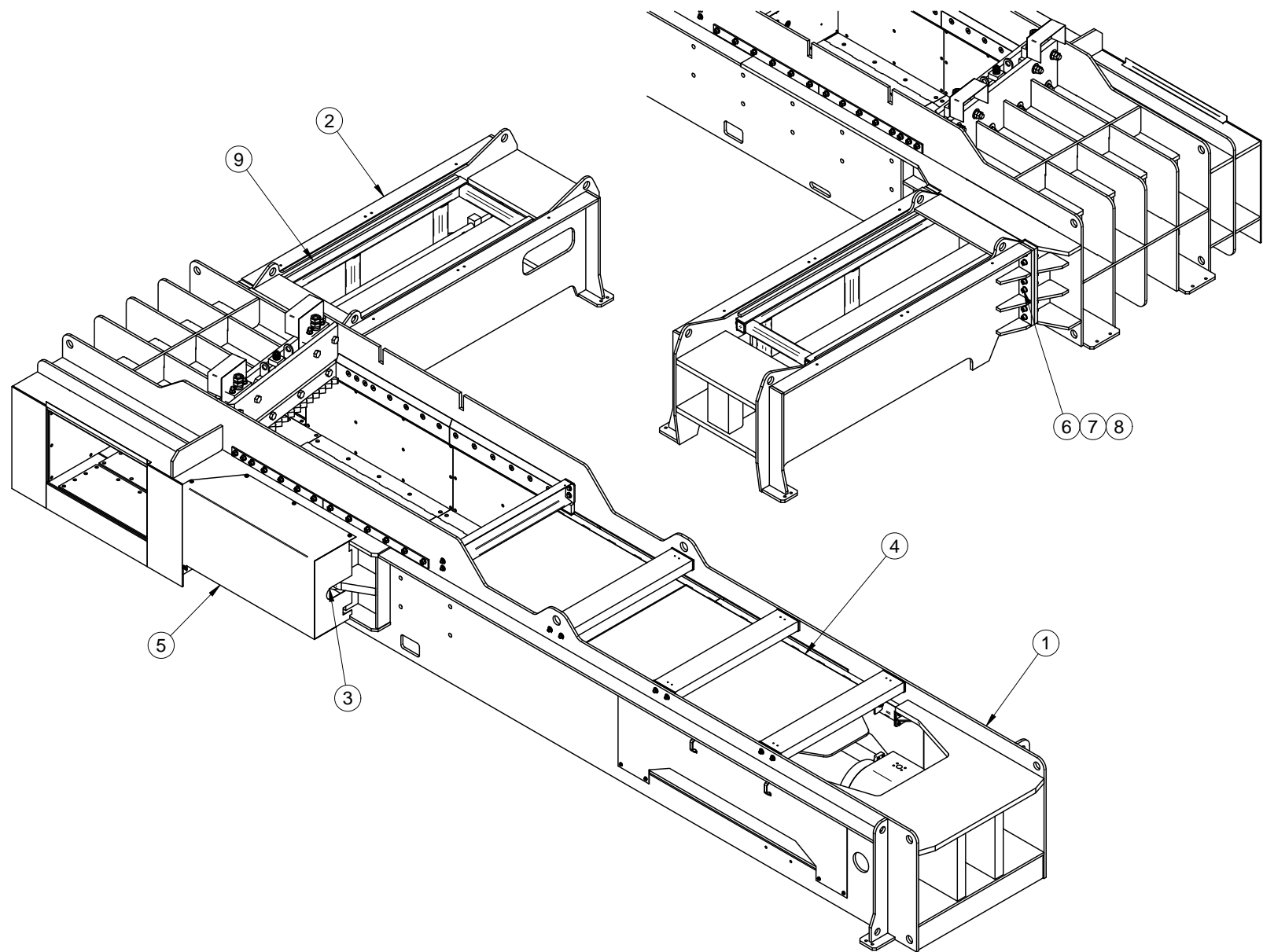
EXTERNAL ELECTRICAL42

SPARE PARTS LIST 44

THIS PAGE INTENTIONALLY LEFT BLANK

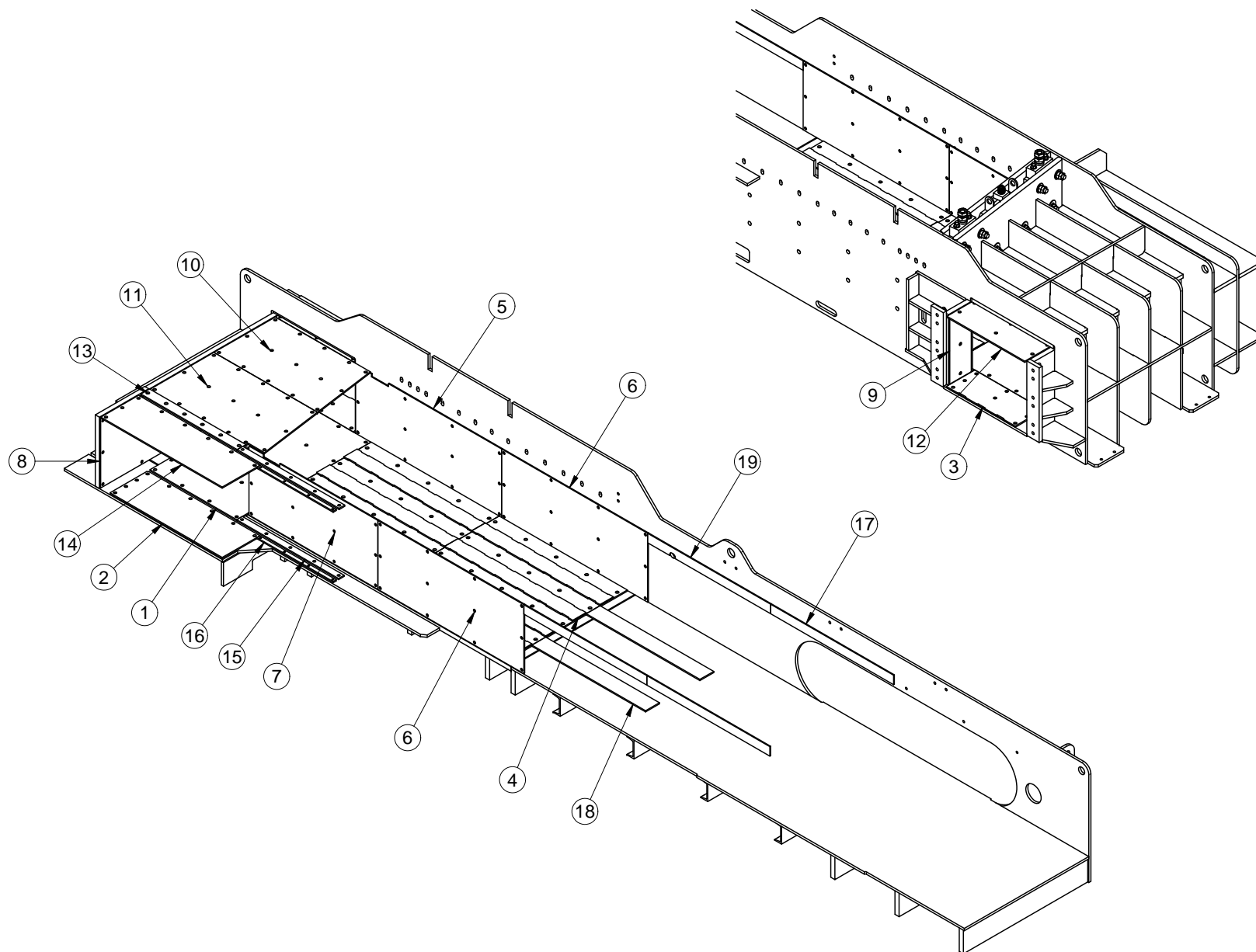
SAFETY EQUIPMENT AND REFERENCE MATERIAL

Harris Part Number¹	Description
1000018705A	Safety decal kit
OSM105001	Operator/service manual
8831	Part manual



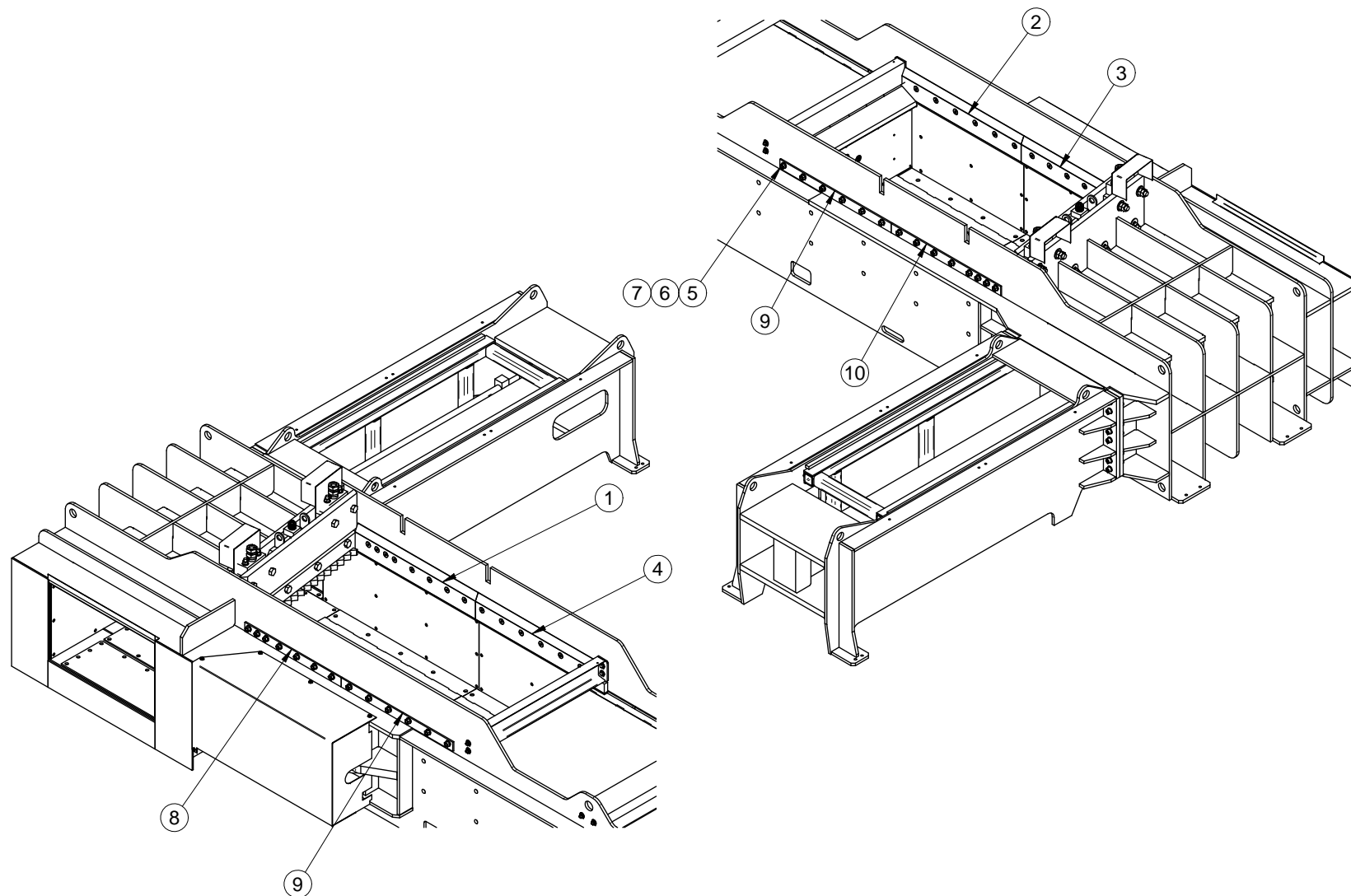
PARTS LIST FOR 1000018747AW LEFT-HAND HRB 240 ASSEMBLY

Item	Qty	Harris Part Number	Description
1	1	1000018746A	Frame
2	1	1000018851	Eject Ram Frame
3	1	1000016914	Combo Door
4	1	1000016287	Main Ram Platen
5	1	1000018745	Combo Door Guard
6	24	101519005	1" Flat Washer Hardend Gr8
7	12	818041	SHCS 1-8 UNC x 6 Gr8
8	12	101456010	Nut Lock Nylon Insert 1-8 UNC Gr8



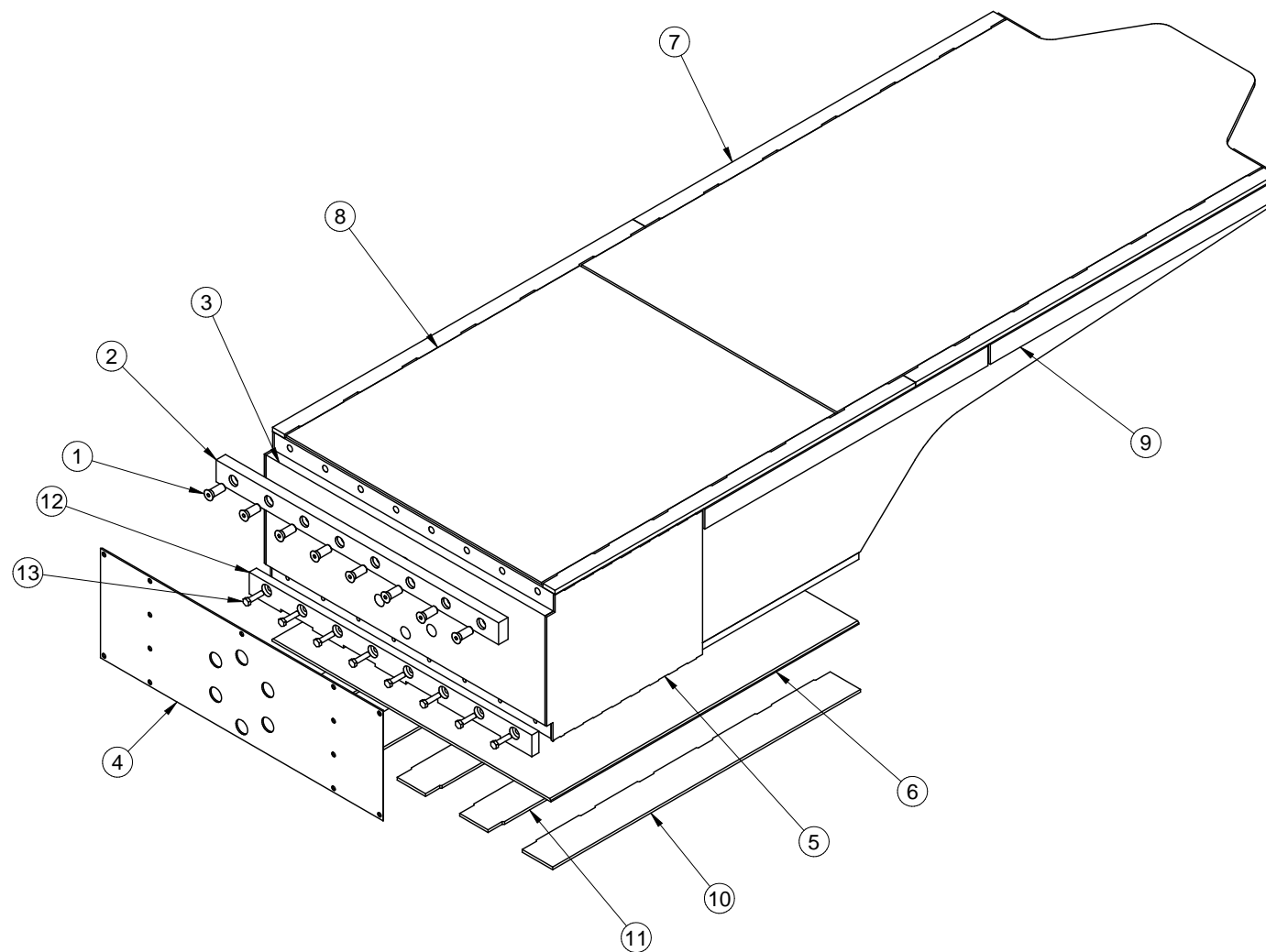
PARTS LIST FOR 1000018746A LEFT-HAND HRB 240 MAIN FRAME LINER

Item	Qty	Harris Part Number	Description
1	1	1000014184	Floor Liner Plate
2	1	1000014185	Combo Door Liner Plate Bale Exit
3	1	1000012571	Floor Liner Eject Ram Side
4	2	1000012557	Hopper Floor Liner
5	1	1000012850	Two Ram Frame Front ERS Liner
6	2	1000012260	Two Ram Frame ERS Liner
7	1	1000012259	Two Ram Fraem Front BES Liner
8	1	1000012258	Frame Endwall Liner Plate
9	1	1000012572	Frame Wall Liner ER Ram Side
10	1	1000012565	Main Ram Top Liner
11	1	1000012255	Frame Top Liner Plate
12	1	1000012574	Frame Top Liner ERS
13	1	1000014183	Frame Top Combo Door Liner
14	1	1000014186	Frame Eject Top Liner Plate
15	2	1000012250	Combo Door Inner Liner Strip
16	2	1000012251	Combo Door Outer Liner Strip
17	3	510020.06000.00400	Liners
18	2	510012.05550.00675	Liners
19	1	1000014922	Liner



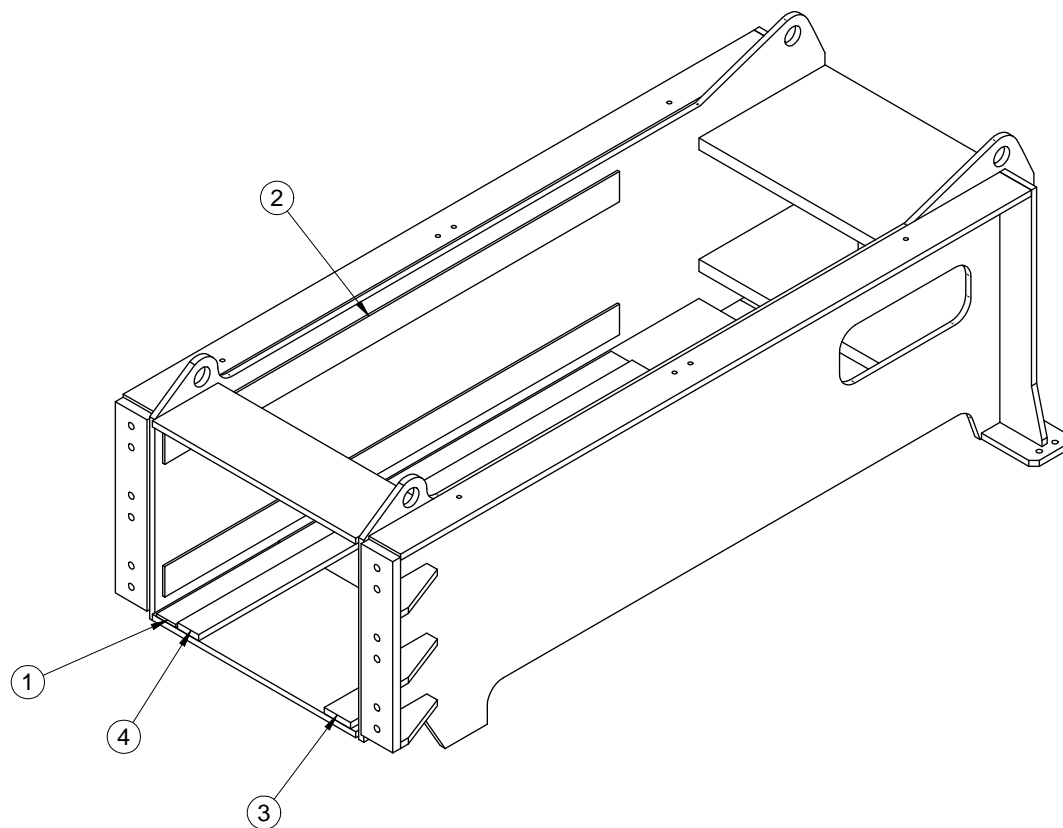
PARTS LIST FOR HOLDDOWN REPLACEMENT

Item	Qty	Harris Part Number	Description
1	1	1000016727	Holddown ejector side front
2	1	1000016362	Holddown bale exit side rear
3	1	1000016726	Holddown bale exit side front
4	1	1000016363	Holddown ejector side rear
5	27	101485010	Nut hex 1-8 Gr8
6	27	869706	FHCS 1-8 x 4 x Gr8
7	27	101519005	1" Flat wasger Gr8
8	1	1000013674	Holddown bolt plate
9	2	1000013675	Rear holddown bolt plate
10	1	1000013676	Frame holddown bolt plate



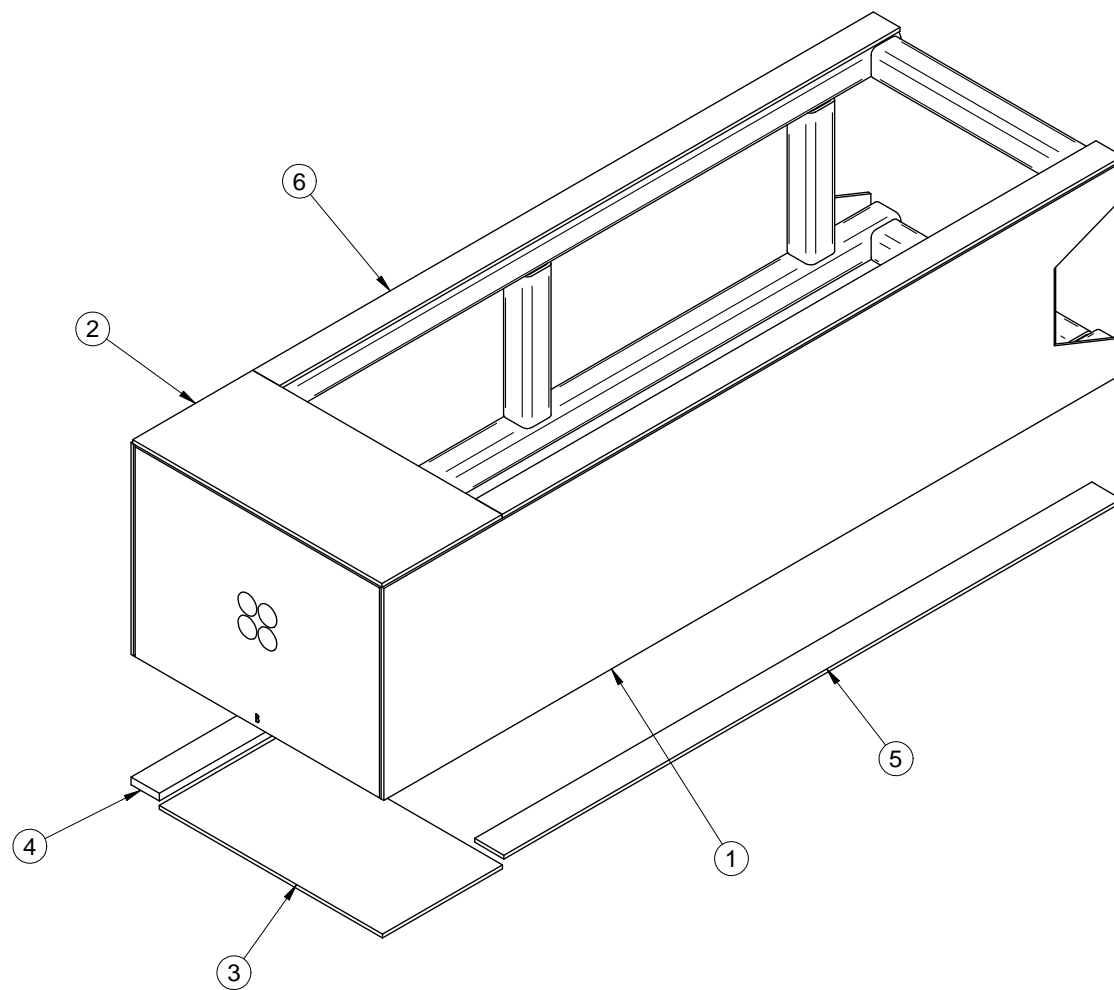
PARTS LIST FOR 1000016287 MAIN RAM LINER

Item	Qty	Harris Part Number	Description
1	8	D20754E	Main ram knife bolt
2	1	1000012356	Main ram knife
3	1	1000012353	Main ram face plate
4	1	1000012384	Main ram front liner
5	2	1000016286	Main ram side liner plate
6	1	1000012357	Main ram bottom liner
7	4	1000012964	Main ram top wear strip
8	1	1000013951	Main ram top wear plate
9	4	510020.06000.00362	Liner
10	2	1000012465	Strip floor liner
11	3	1000012464	Strip floor liner
12	1	1000012355	Main ram wiper
13	8	802486	Main ram wiper bolts



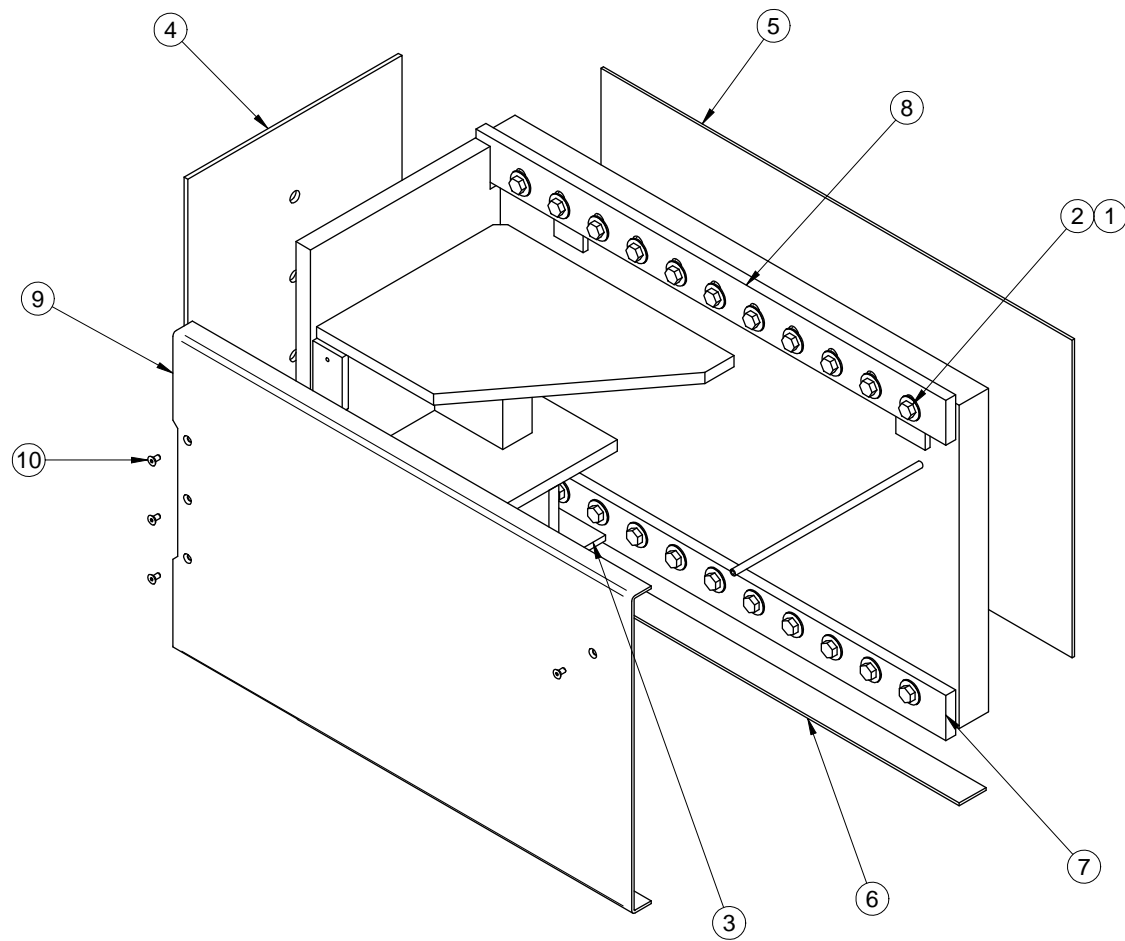
PARTS LIST FOR 1000016911 LEFT-HAND EJECT RAM FRAME

Item	Qty	Harris Part Number	Description
1	1	1000016940	Eject ram housing liner
2	4	510020.08650.00500	Eject ram side wall liner
3	1	510013.08650.00500	Eject ram floor liner
4	1	510013.08650.00400	Eject ram floor liner



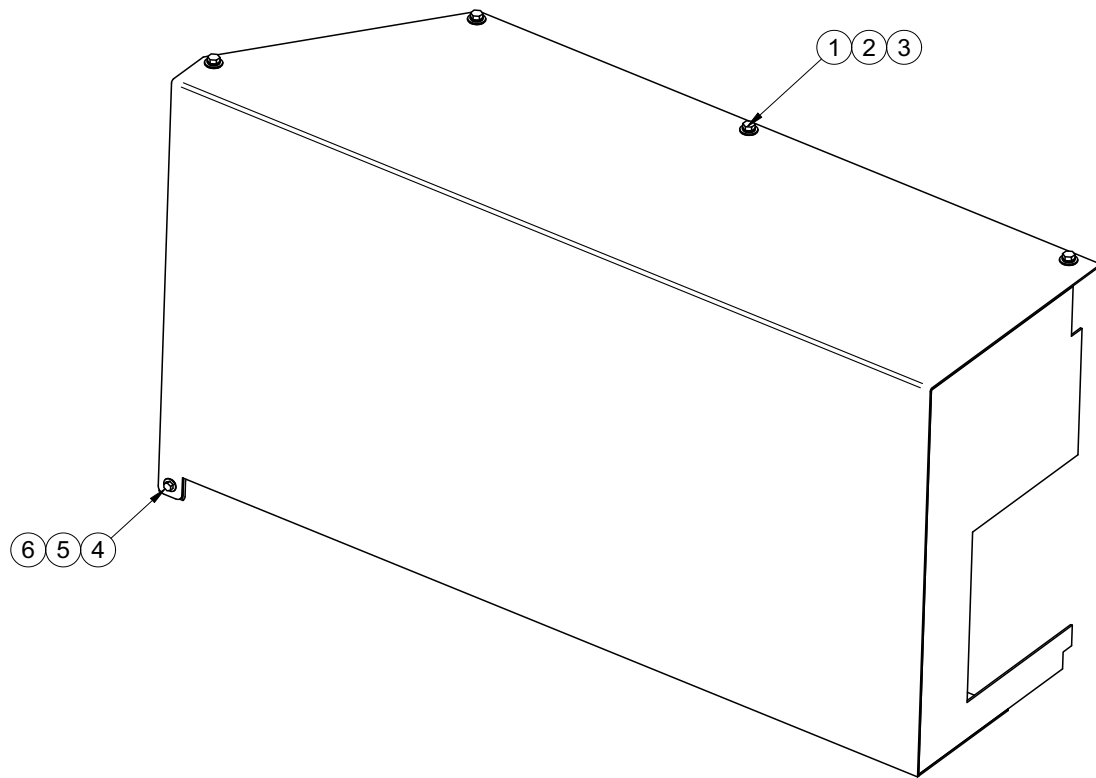
PARTS LIST FOR 1000018850 LEFT-HAND EJECT RAM LINERS

Item	Qty	Harris Part Number	Description
1	2	1000016895	Eject ram side wall
2	1	510012.03738.01800	Eject ram top plate
3	1	510012.03344.01800	Eject ram bottom plate
4	1	510013.10150.00425	Eject ram floor strip liner
5	1	510012.09250.00438	Eject ram guide strip liner
6	2	510012.09300.00400	Eject ram top strip liner



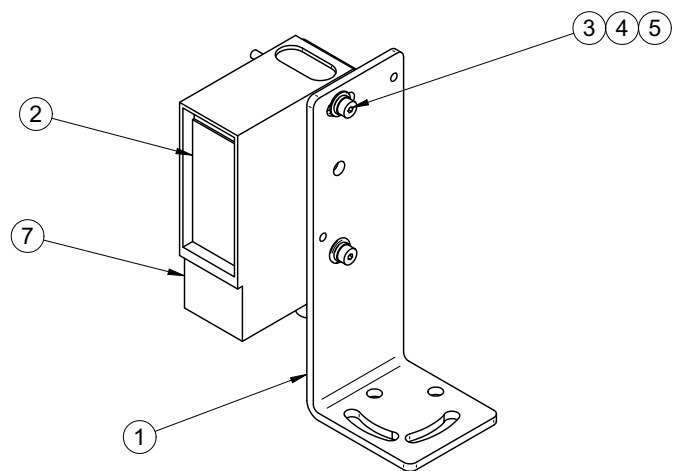
PARTS LIST FOR 1000016914 LEFT-HAND COMBO DOOR LINER

Item	Qty	Harris Part Number	Description
1	22	101519003	3/4 x 1 1/2 Flat washer hardened Gr8
2	22	802486	HHCS 3/4-10 x 3 Gr8
3	1	510012.01819.01350	Combo door front top liner
4	1	1000014187	Combo door front face liner
5	1	1000012638	Combo door side face liner
6	1	510015.04838.00275	Combo door strip liner
7	1	1000012635	Combo door guide bar
8	1	1000012636	Combo door adjustable guide bar
9	1	1000016673	Combo door travel guard
10	4	818083	FHCS 3/8-16 x .75 Gr8



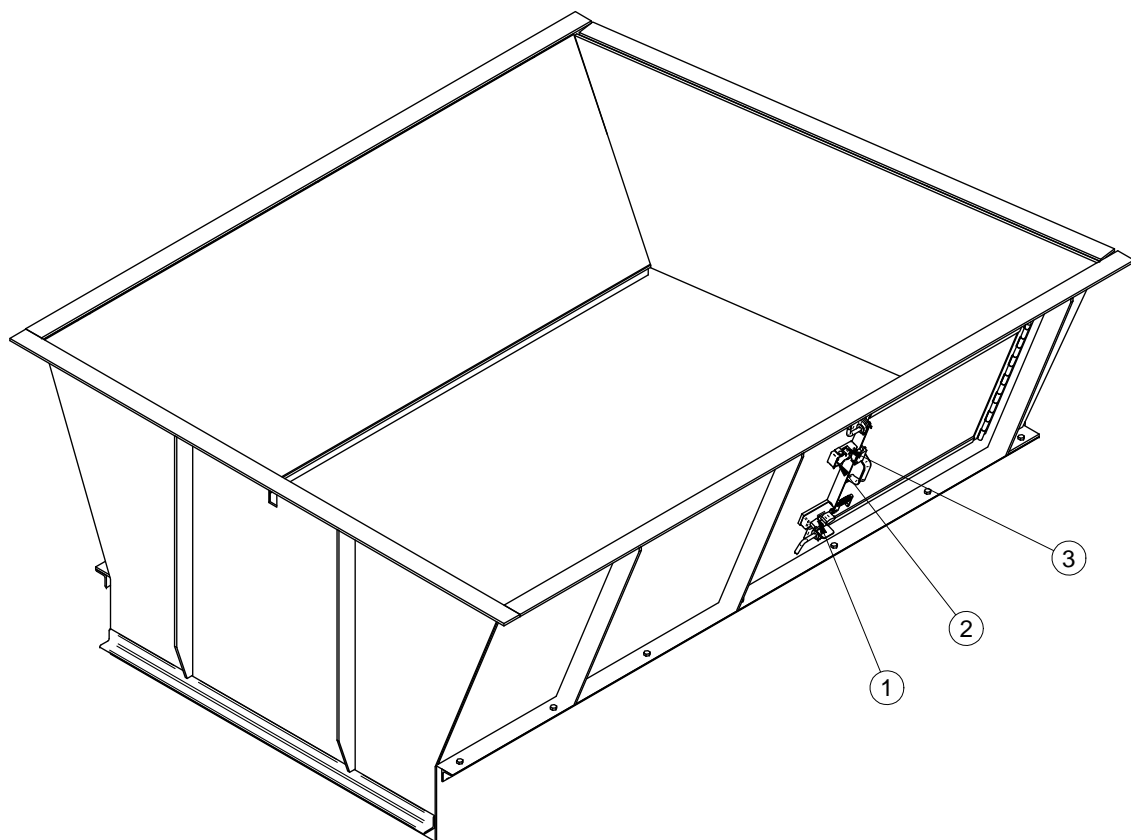
PARTS LIST FOR 1000018745 LEFT-HAND COMBO DOOR GUARD

Item	Qty	Harris Part Number	Description
1	4	802367	HHCS 1/2 x 1 1/4
2	4	805060	1/2 Lock washer
3	4	804472	1/2 Flat washer
4	1	802287	HHCS 3/8 x 1
5	1	804470	3/8 Flat washer
6	1	804718	3/8 Nut



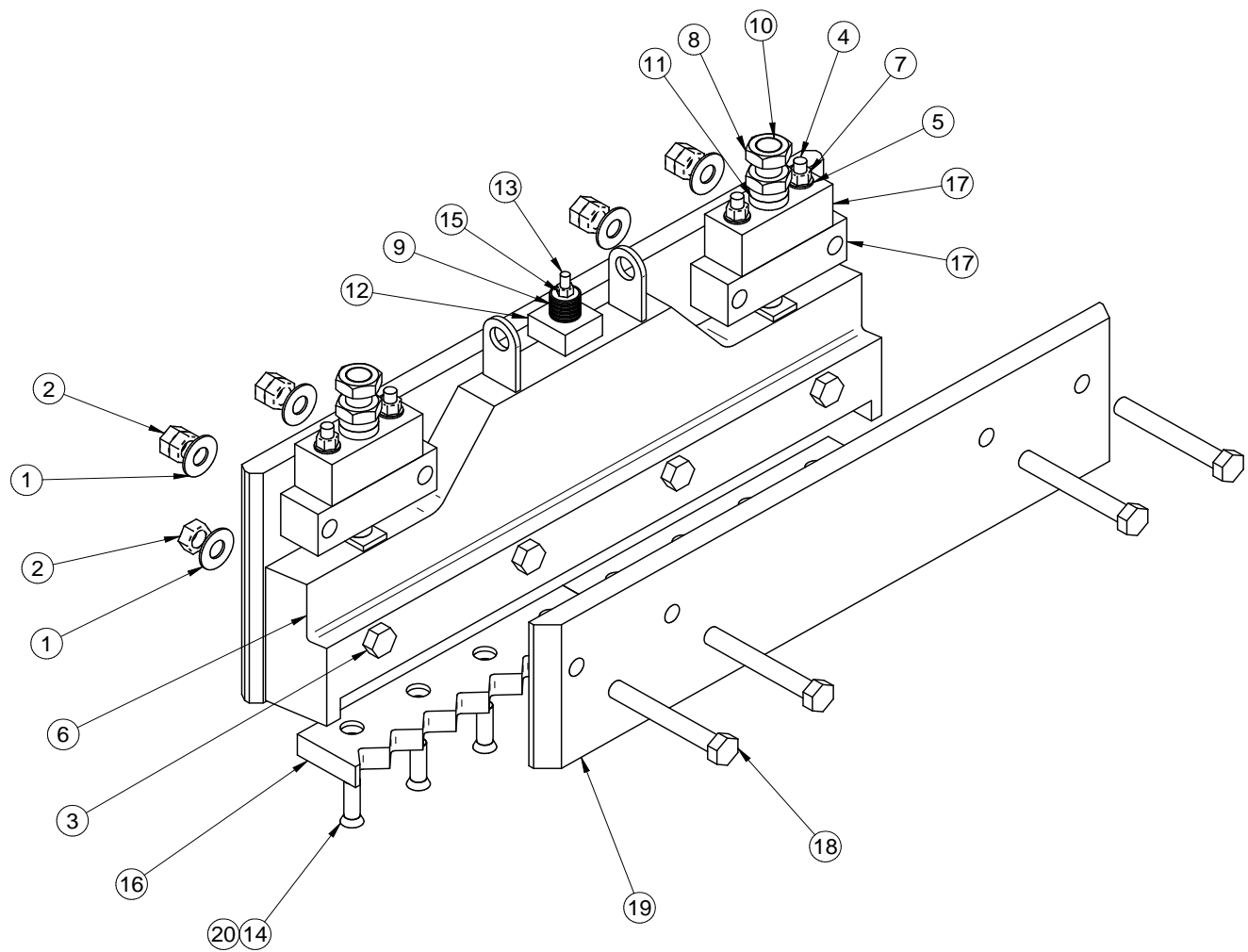
PARTS LIST FOR LASER MOUNT ASSEMBLY

Item	Qty	Harris Part Number	Description
1	3	872568	Laser mount
2	3	887965	Laser
3	6	871002	SHCS #8-32 x 1.75 Gr8
4	6	811906	Flat washer #8 Gr8
5	6	804835	Nut hex #8 Gr8
6	3	872567	Laser cable (not shown)
7	3	887966	Laser Cover



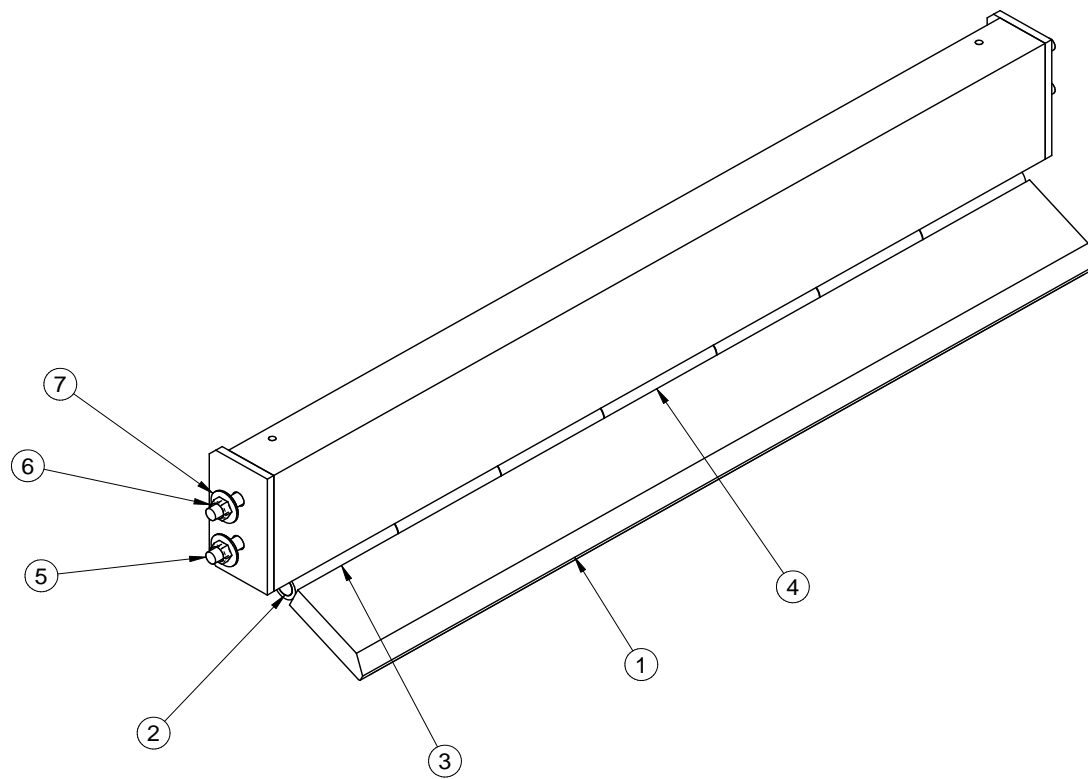
PARTS LIST FOR HOPPER DOOR ASSEMBLY

Item	Qty	Harris Part Number	Description
1	1	871533/871535	Safety Key AA-BB
2	1	872175	Tongue switch
3	4	870300	BHCS torx pin in socket #8-32 x 3/4
4	2	868643	Infrared photo switch (not shown)
5	1	872215	Tongue switch cable (not shown)



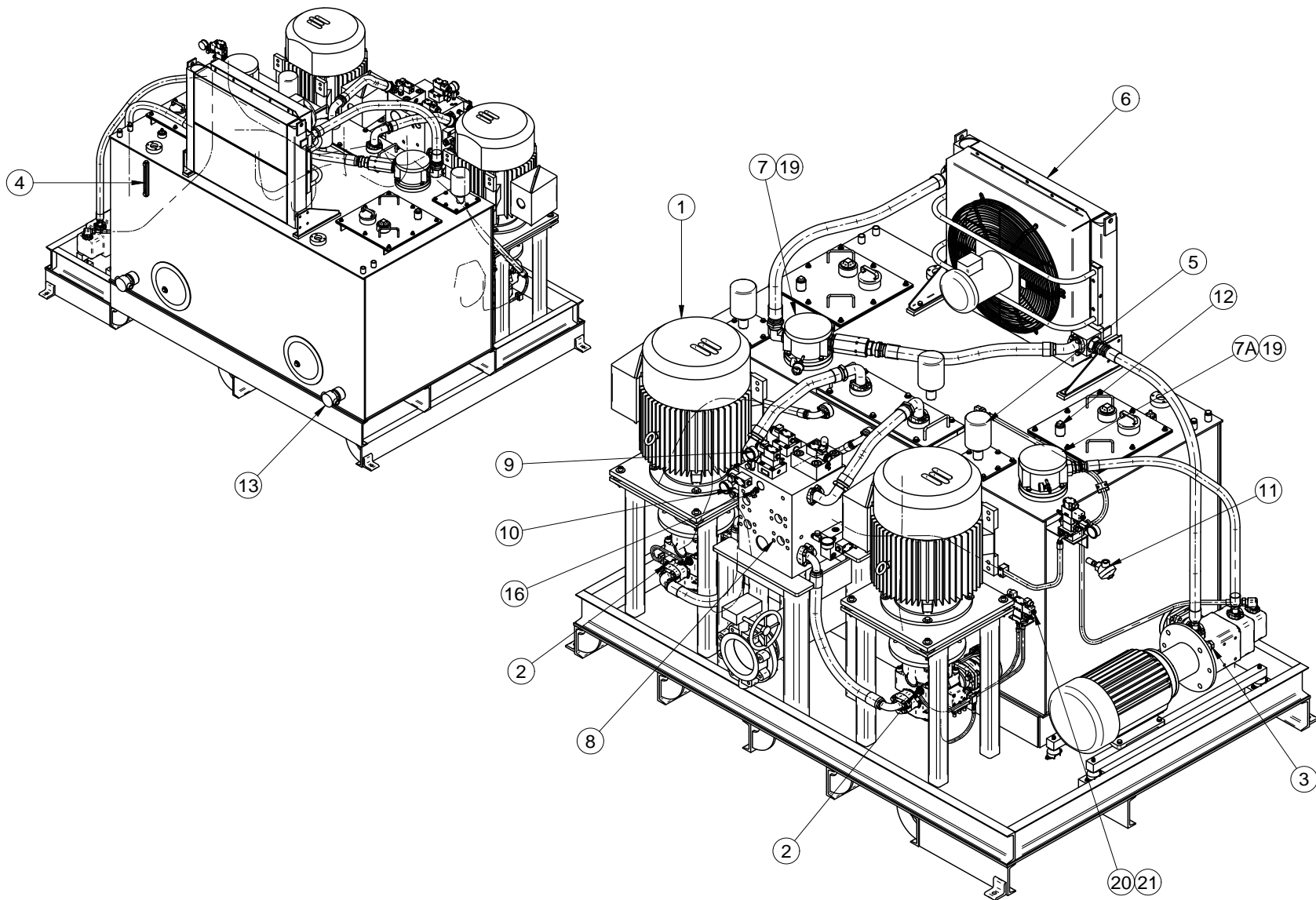
PARTS LIST FOR 1000016669A SHEAR BEAM ASSEMBLY

Item	Qty	Harris Part Number	Description
1	8	101519002	1-1/2 flat washer Gr8
2	12	101485014	1-1/2 hex nut Gr8
3	4	101498464	HHCS 1 1/2 -6 UNC x 10 Gr8
4	4	101498460	HHCS 1-8 UNC x 10 Gr8
5	4	101519005	1" flat washer Gr8
6	1	1000015568	Shear Beam
7	4	101485010	1 hex nut Gr8
8	4	804774	2-4.5 jam nut gr 8
9	11	110366010	Belleville washer
10	2	98017.01494	1 1/2 stud
11	4	108264004	2" collar
12	1	D39181A	Beam hanger block
13	1	869878	HHCS 3/4-10 UNC x 6 Gr8
14	8	D20754G	FHCS 1 1/4-7 x 4 x 50deg
15	1	804723	3/4 hex nut Gr8
16	2	1000015528	Serrated knife
17	2	D39179A & D39180A	Beam adjustment block assembly
18	4	871013	HHCS 1 1/2-6 UNC x 11 Gr8
19	1	1000014622	Shear beam plate
20	8	D30345	Shear beam knife washer



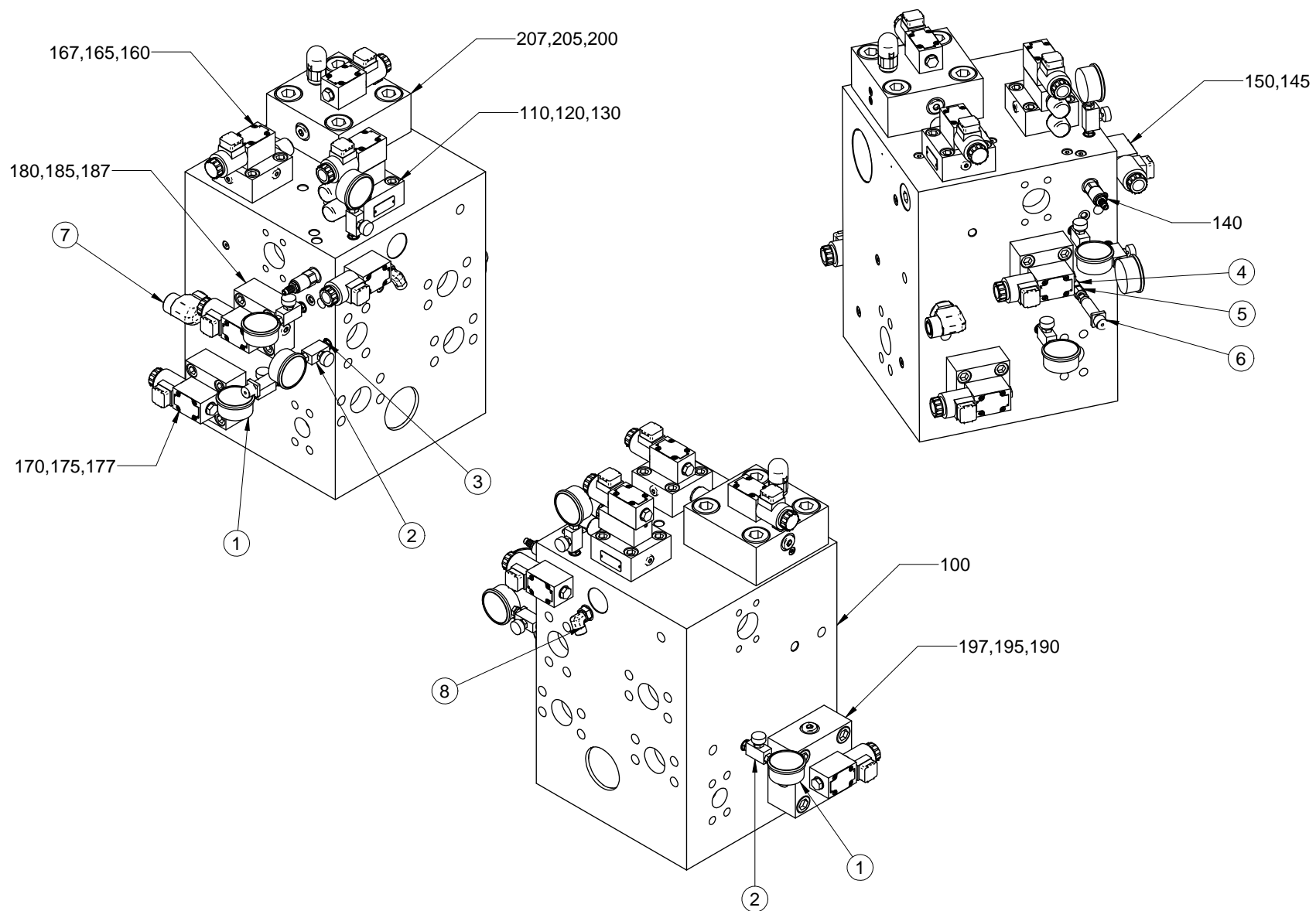
PARTS LIST FOR 1000015549 WIPER ASSEMBLY

Item	Qty	Harris Part Number	Description
1	1	1000015243	Wiper blade
2	1	503307.05650	Wiper rod
3	6	819556.00794	Wiper hinge
4	1	819556.00869	Wiper hinge
5	4	802485	HHCS 3/1-10 x 2 3/4 gr8
6	8	804474	3/4 Flat washer
7	4	807558	3/4 Lock nut



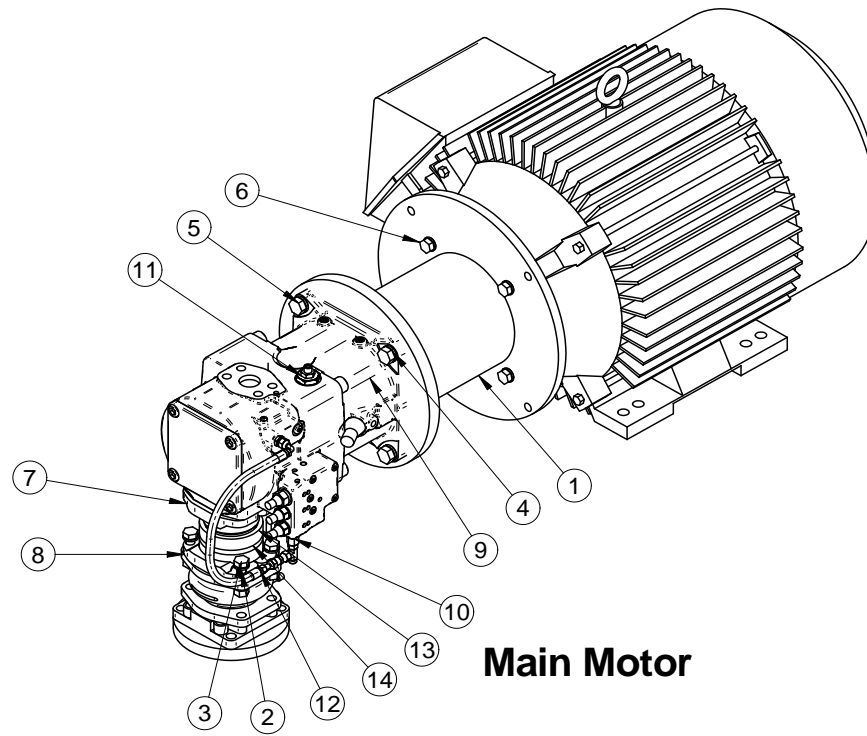
PARTS LIST FOR 200HP HYDRAULIC POWER UNIT

Item	Qty	Harris Part Number	Description
1	2	872681	Electric motor, 100hp
2	2	871239	Pump, piston
3	1	871045	Pump, vane, triple
4	1	870589	Site gauge
5	3	870599	Air breather
6	1	872682	Cooler, air-to-oil
7	1	871733	Filter
7A	1	871734	Filter
8	1	872229	Manifold
9	5	871703	Pressure gauge
10	1	871377	Pressure transducer
11	1	871375	Temperature transducer
12	1	871376	Float switch
13	3	872683	Oil heater, 4 KW
14	5	870622	Snubber gauge
15	2	871024	Relief valve
16	1	869955	Snubber
17	1	205354000	Baffle screen (not shown)
18	1	882294	Filter element
19	2	871823	Diff press transducer
20	2	871028	Directional valve
21	2	871024	Relief valve sandwich

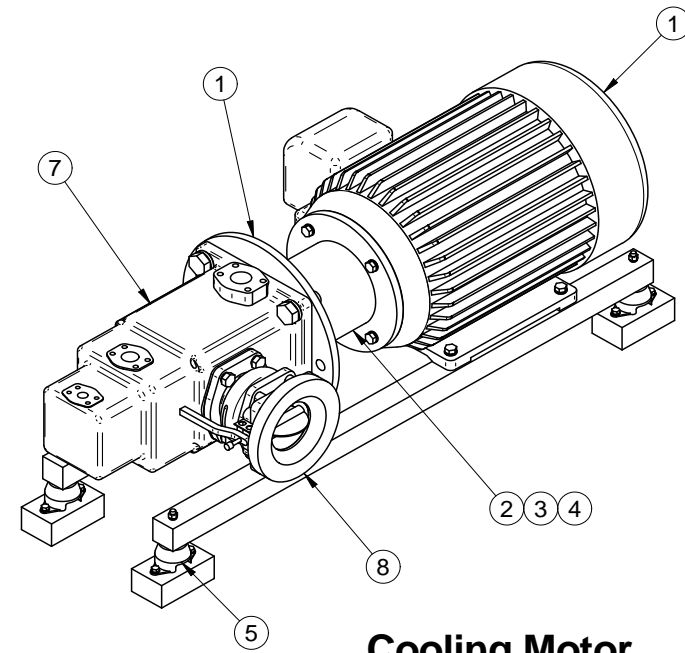


PARTS LIST FOR MANIFOLD

Item	Qty	Harris Part Number	Description
1	5	871703	Pressure gage
2	5	870622	Snubber
3	5	869105	SAE #4 x #4 Adapter
4	1	859617	#4 x .25 Oring adapter
5	1	869955	Snubber
6	1	871377	Transducer
7	1	869652	PS-L #16 x #12 thread elbow
8	1	869239	PS-L #8 x #8 thread elbow
Tech Pos	Qty	Harris Part Number	Description
110	1	871005	Valve,Poppet
120	1	870948	Valve, Cartridge Cover
130	1	870943	Valve, Directional
140	1	872528	Valve, Press Reducing-Relieving
145	1	871493	Orifice
150	1	870943	Valve, Directional
160	1	871494	Valve, Poppet
165	1	870948	Valve, Cartridge Cover
167	1	872230	Valve, Directional
170	1	871495	Valve, Poppet
175	1	871499	Valve, Cartridge Cover
177	1	870943	Valve, Directional
180	1	871496	Valve, Poppet
185	1	871500	Valve, Cartridge Cover
187	1	870943	Valve, Directional
190	1	871497	Valve, Poppet
195	1	871501	Valve, Cartridge Cover
197	1	870943	Valve, Directional
200	1	871498	Valve, Poppet
205	1	872233	Valve, Cartridge Cover
207	1	872230	Valve, Directional



Main Motor



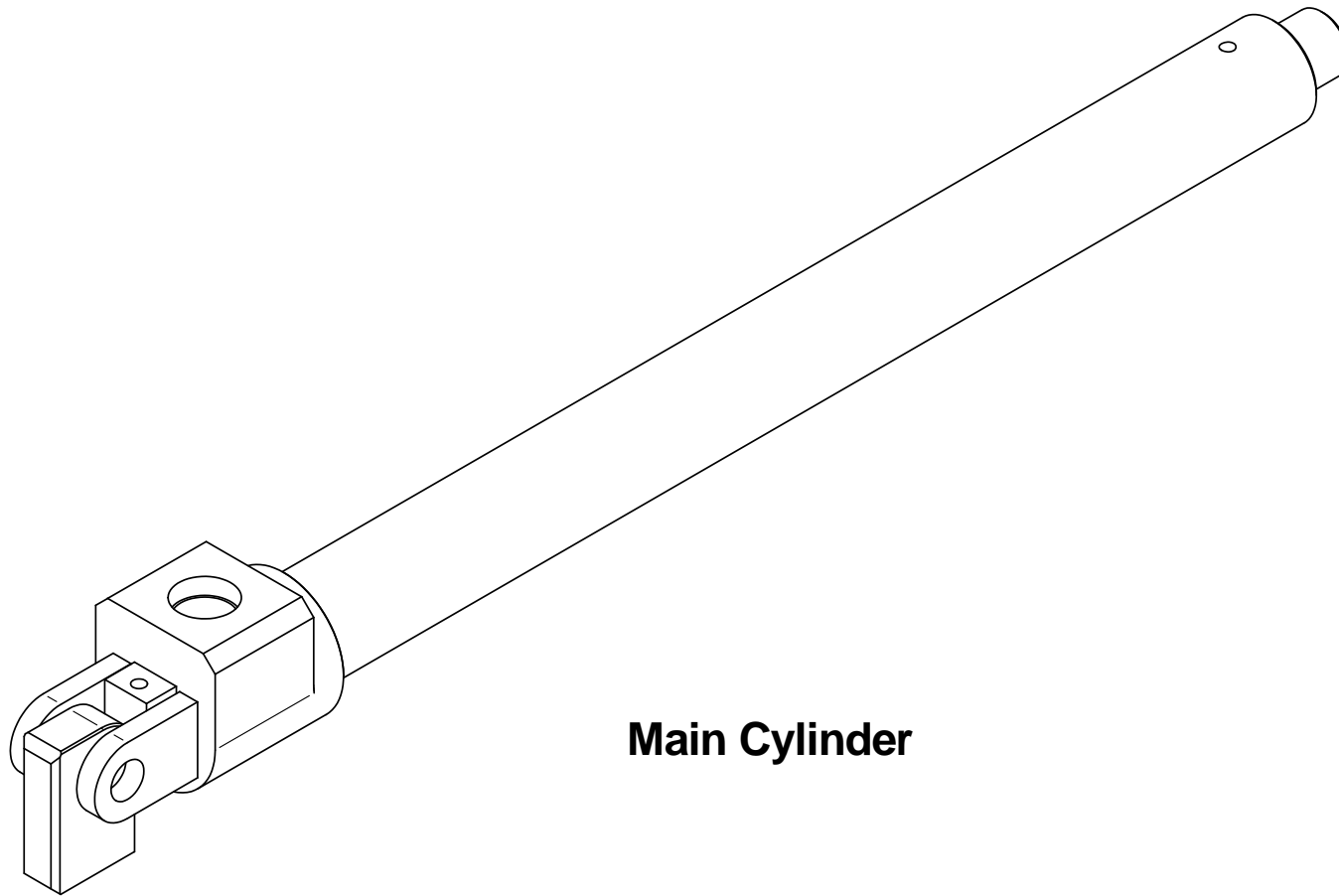
Cooling Motor

PARTS LIST FOR MAIN PUMP/MOTOR GROUP

Item	Qty	Harris Part Number	Description
1	1	871054	Adapterm pump/motor
2	12	805062	Lock washer
3	4	802447	Hex head cap screw
4	4	805063	Lock washer
5	4	802483	Hex head cap screw
6	4	802443	Hex head cap screw
7	1	865742	Flange, split, 3.5 code 61
8	1	862983	Flange, split 4.0 code 61
9	1	871004	Coupling, pump/motor
10	1	870714	O-ring, #6 x #4 adapter
11	1	870618	O-ring, #16 x #8 adapter
12	4	804722	Hex nut
13	1	870970	Flange, butt weld flng head 3.5 code 61
14	1	870900	Flange, butt weld flng head 4.0 code 61
15	1	870616	Fitting, hose 1/4" x 1/4" 90 deg
16	1	868817	Coupling insert
17	1	868309	Coupling motor

PARTS LIST FOR COOLER PUMP/MOTOR GROUP

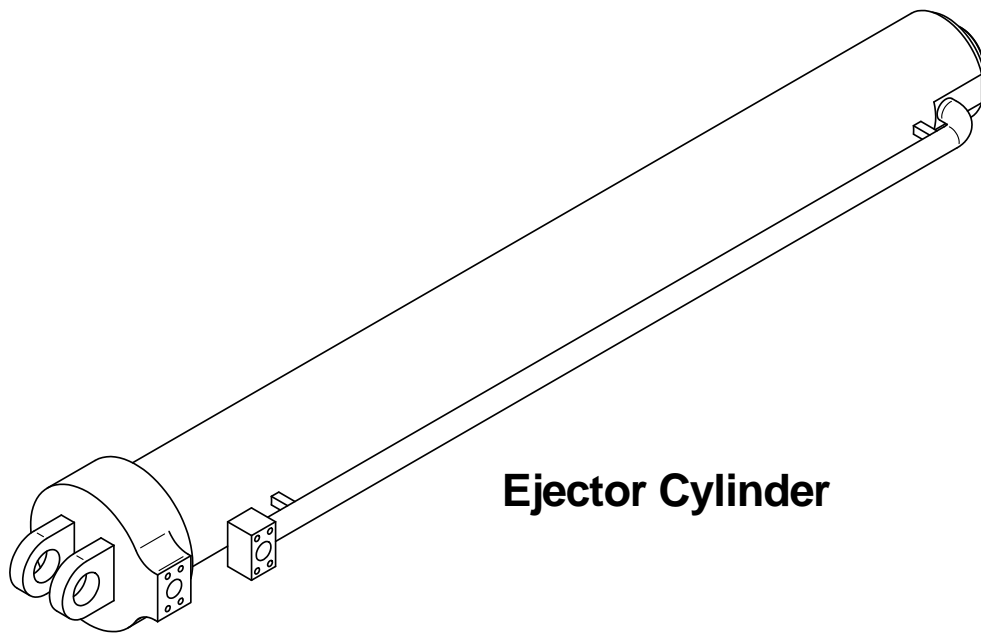
Item	Qty	Harris Part Number	Description
1	1	871053	Adapter pump / motor
2	1	102361004	Coupling half pump/motor
3	1	102361022	Coupling insert
4	1	871051	Coupling half
5	4	871050	Rubber mount
6	1	860973	30HP motor
7	1	871045	Pump triple vane
8	1	870624	Valve, 4" cutoff



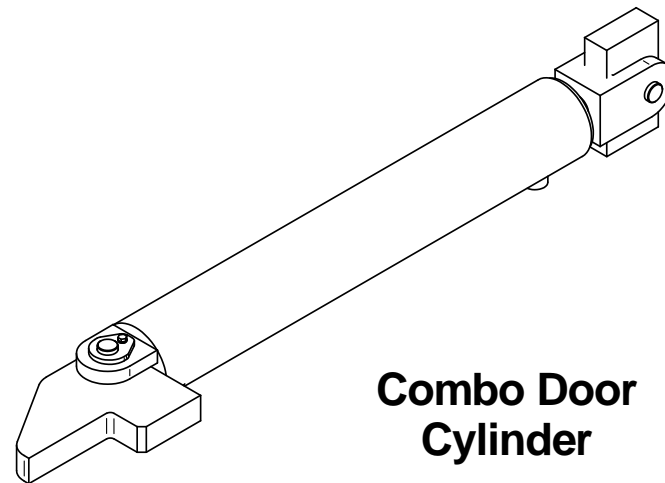
Main Cylinder

PARTS LIST FOR HYDRAULIC CYLINDER

Item	Qty	Harris Part Number	Description
1	1	872578	Main ram cylinder
2	1	871355	Seal Kit



Ejector Cylinder



**Combo Door
Cylinder**

PARTS LIST FOR 9" EJECTOR CYLINDER

Item	Qty	Harris Part Number	Description
1	1	871057	Eject cylinder
2	1	871193	Seal kit

PARTS LIST FOR 7" COMBO DOOR CYLINDER

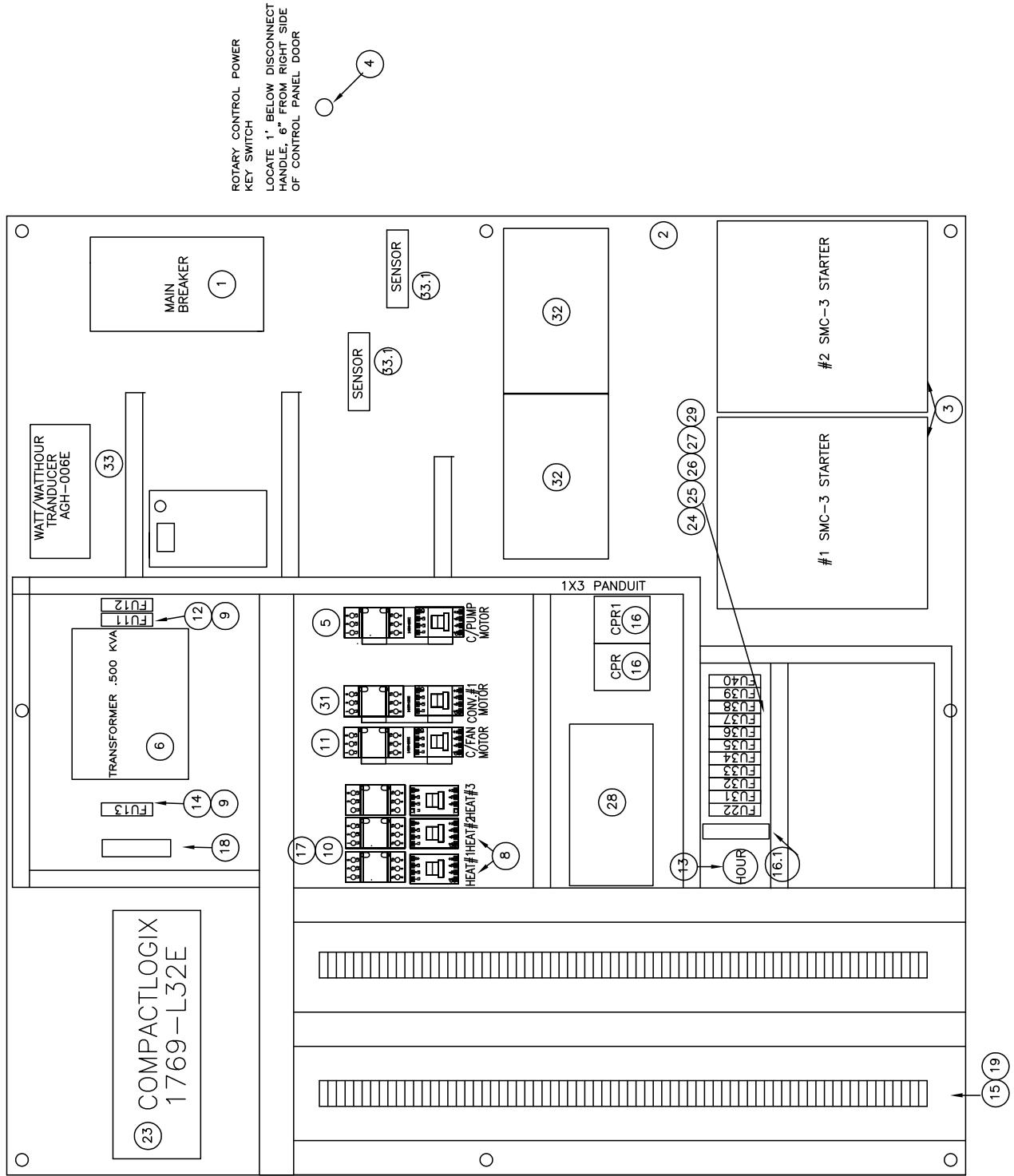
Item	Qty	Harris Part Number	Description
1	1	871058	Combo door cylinder
2	1	871192	Seal kit



OCS BOM

ITEM	#QTY.	INV #	DESCRIPTION
A	1	871779	ENCL SLOPE FRONT 20X30 MOD (NO HOLES)
B	1	870662	PANELIEW PLUS 1000
C	1	871027	LGD PL GRIZZLY ENGLISH/SPANISH
D	1	870101	PB E-STOP MAIN 2-NC 1-NO
E	1	869144	PUSH BUTTON WHITE ILL.1-NO CONTACT
F	1	858163	3 POSTION KEYED SEL SWITCH
F.1	2	871164	N.O. 10AMP RATED CONTACT BLOCK
F.2	2	871165	N.C. 10AMP RATED CONTACT BLOCK
G	3	858188	PB 30MM BLK EXT HEAD W/1-NO
H	3	858158	SWITCH 3-POS JOYSTICK W/CONT
I	1	871092	POINT I/O ETHERNET ADAPTER 24VDC
J	2	871094	POINT I/O 24VDC ANALOG 2 POINT
K	4	871093	POINT I/O 24VDC INPUT MODULE
L	2	871095	POINT I/O 24VDC RELAY OUTPUT MODULE
M	1	871156	RAIL SWITCH SPIDER 5TX ETHERNET
N	1	869963	MODEM ETHERNET SWITCH 56K DIN RAIL
O	1	869961	INTERFACE MOUNT
P	1	871115	ENCL 30X30X12 W/BP
Q	8	868678	2 AMP FUSES 1/4 X 1 1/4
Q.1	8	870663	RELAY 4 POLE 7 N.O. & 1 N.C. CONTACTS
R	70	858332	TERMAINAL BLOCKS
R.1	4	858323	TERMINAL BLOCK ANCHORS
R.2	2	858333	TERMINAL BLOCK END BARRIERS
R.3	1	858326	TERMINAL BLOCK CHANNEL MOUNT
R.4	1	868673	TERMINAL BLOCK BARRIERS
S	7	871096	POINT I/O 24VDC BASE

**THIS PAGE INTENTIONALLY
LEFT BLANK**



ITEM #	QTY.	INV #	DESCRIPTION
1	1	870239	BREAKER 400A FLNG MT & ACCS
2	1	870939	ENCL 60X61X12 FLNGMNT
2.1	1	870940	ENCL 60X61X12 BACKPLATE
2	2	871851	SMC-3
3.1	2	870691	AUX CONTACT 1-NO/NC
3.2	2	871126	MODULE PROTECTIVE
3.3	2	871852	CONTACTOR IEC TERMINAL COVER
3.4	4	858881	IEC LUG KIT
4	1	871532	SWITCH ROTARY KEY CODE
5	1	870096	CONTACTOR IEC 43 AMP 24VDC COIL
5.1	1	869151	CONTACTOR 140M 32-45 AMP
5.2	1	869049	CONTACTOR FRONT MOUNT AUX. CONTACT
6	1	870332	TRANSFORMER 2000 KVA
7	1	870101	PB E-STOP MAIN 2-NC 1-NO
-	-	-	-
8	2	869155	CONTACTOR IEC 9 AMP 24VDC COIL
9	3	868618	FUSE HOLDER, 1P, NEON, CC CLASS, 30 AMP
10	6	866042	10 AMP FUSE
11	1	869155	CONTACTOR IEC 9 AMP 24VDC COIL
11.1	1	869043	CONTACTOR 140M MTR PROT. 2.5-4.0 AMP
11.2	1	869049	CONTACTOR FRONT MOUNT AUX. CONTACT
12	2	868680	FUSE 3 AMP 13/32 X 1 1/2
13	1	869147	HOUR METER (HOBBS #85097-02)
14	1	858231	FUSE 6 AMP DE
15	32	868672	FUSED TERMINAL BLOCKS
15.1	32	868678	2 AMP FUSES 1/4 X 1 1/4
16	2	870663	RELAY 4 POLE 7 N.O. & 1 N.C. CONTACTS
16.1	1	870267	RELAY SAFETY MONITORING
17	2	870391	FUSE HOLDER, 3P, NEON, CC CLASS, 30 AMP
18	1	871156	RAIL SWITCH SPIDER 5TX ETHERNET
19	100	858332	TERMAINAL BLOCKS
19.1	10	858323	TERMINAL BLOCK ANCHORS
19.2	7	858333	TERMINAL BLOCK END BARRIERS
19.3	4	858326	TERMINAL BLOCK CHANNEL MOUNT
19.4	1	868673	TERMINAL BLOCK BARRIERS
31	1	869158	CONTACTOR IEC 30 AMP 24VDC COIL
31.1	1	869049	CONTACTOR 140M FRONT MT
31.2	1	869075	CONTACTOR 140M MOTOR PROTECTOR
23	1	871155	SLC-1500 MICROLOGIX P/SUPPLY 24VDC
23.1	1	880004	SLC COMPACT LOGIX PROCESSOR
23.2	-	-	-
23.3	2	869267	SLC-1500 MICROLOGIX INPUT
23.4	1	869889	SLC-1500 MICROLOGIX 16 BIT
23.5	1	868928	SLC-1500 MICROLOGIX END PLATE
23.6	1	871079	SLC COMPACT LOGIX FLASH/CARD
24	3	866042	FUSE 10 AMP
25	1	858238	FUSE 2 AMP
26	5	868732	FUSE 1 AMP
27	10	868618	FUSE HOLDER, 1P, NEON, CC CLASS, 30 AMP
28	1	870396	30 AMP 120AC TO 24DC 3PH POWER SUPPLY
26	1	858244	FUSE 1/2 AMP
31	1	870874	CONTACTOR IEC 23 AMP 24VDC COIL
31.1	1	869049	CONTACTOR 140M FRONT MT
31.2	1	869047	CONTACTOR 140M MOTOR PROTECTOR
32	2	869897	150A CIRCUIT BREAKER
32.1	6	869620	FUSE 200 AMP CLASS J
32.2	6	871512	FUSE DEAD FRONT COVER
33	1	871166	AC WATT/WATTHOUR TRANSDUCER
33.1	2	871167	CURRENT TRANSFORMER (400:5 RATIO)
34	1	870391	FUSE HOLDER, 3P, NEON, CC CLASS, 30 AMP
34.1	3	866042	10 AMP FUSE

Recommended Spare Parts

Item	Qty	Harris Part Number	Description
1	1	871703	Pressure gauge
2	1	870589	Sight gauge
3	1	871377	Pressure transducer
4	3	870599	Air breather element
5	2	882294	Oil filter element
6	2	871168	Infrared 5000 SER retro/diffuser
7	1	1000012356	Main ram blade
8	8	D20754E	1 1/4 capscrew
9	2	1000015528	Shear beam blade
10	8	D20754G	1 1/4 capscrew
11	2	98017.01494	Knife beam stud
12	1	871193	Eject cylinder seal kit
13	1	871192	Combo door cylinder seal kit
14	1	871355	Main cylinder seal kit

PARTS LIST FOR EXTERNAL ELECTRICAL

Item	Qty	Harris Part Number	Description	Location
1	2	871168	Photoeye receiver	Hopper and Side wall
2	2	871169	Photoeye transmitter	Hopper and Side wall
3	1	860763	Prox switch	Main ram
4	1	860763	Prox switch	Eject ram
5	1	860763	Prox switch	Combo door
6	1	872175	Tongue switch	Hopper
7	1	870665	Prox switch	Power unit

**THIS PAGE INTENTIONALLY
LEFT BLANK**



HARRIS

Baxley Operations
340 Jekyll Road
Baxley, GA 31513

(800) 447-3526

www.harrisequip.com