



## CARSTAR North Kansas City

Workfile ID:

cd1f59ee

"Relax ... We'll take it from here"  
 1233 Burlington St, 1233 Burlington St, North  
 Kansas City, MO 64116  
 Phone: (816) 474-4949  
 FAX: (816) 471-8183

### Estimate

#### RO Number:

Customer:	Insurance:	Adjuster:	Estimator:	Eric Haferland
KANSAS CITY PUBLIC SCHOOLS	CUSTOMER PAY	Phone:	Create Date:	1/28/2025
2901 TROOST AVE		Claim:		
KC, MO 64109		Loss Date:		
(816) 418-8821		Deductible:		

2022 FORD Police Interceptor Utility Vehicle AWD (Fleet) 4D UTV 6-3.3L Flex Fuel Gasoline Direct Injection White

VIN: 1FM5K8AB1NGB45850	Interior Color:	Mileage In: 34,884	Vehicle Out:
License: 51	Exterior Color: White	Mileage Out:	
State: MO	Production Date:	Condition:	Job #:

Line	Ver	Operation	Description	Qty	Extended Price \$	Part Type	Labor	Type	Paint
1	E01	Repair	SETUP & MEASURE				1.5	Body	
2	E01	Repair	Pull Rear rail				3.0	Frame	
3	E01	Repair	Body Panel Pulls - Pull to fit				4.0	Body	
4	E01		<b>EXHAUST SYSTEM</b>						
5	E01	Remove/Replace	Muffler & pipe w/o HEV	1	1,804.48	OEM	0.9	Mech	
6	E01	Remove/Replace	RT Heat shield rear	1	127.42	OEM	0.2	Body	
7	E01	Remove/Install	LT Heat shield rear				0.2	Body	
8	E01		<b>WINDSHIELD</b>						
9	E01	Remove/Replace	RT Pillar molding	1	171.15	OEM	0.2	Body	
			NOTE: PARTS: Part cannot be reused/reinstalled.						
10	E01		<b>REAR DOOR</b>						
11	E01	Remove/Install	RT R&I door assy				1.2	Body	
12	E01	Remove/Install	RT Front w'strip				0.2	Body	
13	E01	Remove/Install	RT Door w'strip				0.4	Body	
14	E01	Remove/Install	RT W'strip on body				0.0	Body	
15	E01	Remove/Install	RT Belt molding				0.3	Body	
16	E01	Remove/Install	RT Lower molding black INTERCEPTOR, BASE				0.4	Body	
17	E01	Remove/Install	RT Wheel opng mldg				0.3	Body	
18	E01	Remove/Install	RT Applique				0.3	Body	
19	E01	Remove/Install	RT Door glass FORD w/privacy				0.5	Body	
20	E01	Remove/Install	RT Run channel w/privacy				0.6	Body	
21	E01	Remove/Install	RT Regulator				1.1	Body	
22	E01	Remove/Install	RT Handle, outside INTERCEPTOR				0.4	Body	
23	E01	Remove/Install	RT R&I trim panel				0.4	Body	
24	E01	Remove/Install	RT Window molding w/o sunshade				0.3	Body	

T = Taxable Item, RPD = Related Prior Damage, AA = Appearance Allowance, UPD = Unrelated Prior Damage, PDR = Paintless Dent Repair, A/M = Aftermarket, Rechr = Rechromed, Reman = Remanufactured, OEM = New Original Equipment Manufacturer, Recor = Re-cored, RECOND = Reconditioned, LKQ = Like Kind Quality or Used, Diag = Diagnostic, Elec = Electrical, Mech = Mechanical, Ref = Refinish, Struc = Structural

## Estimate

### RO Number:

2022 FORD Police Interceptor Utility Vehicle AWD (Fleet) 4D UTV 6-3.3L Flex Fuel Gasoline Direct Injection White

25	E01	Repair	Remove Decal				2.0	Body	
26	E01		<b>QUARTER PANEL</b>						
27	E01	Remove/Replace	RT Quarter pnl assy	1	1,356.35	OEM	18.5	Body	3.5
28	E01	Remove/Replace	RT Gutter	1	221.38	OEM	1.0	Body	0.8
29	E01	Remove/Replace	RT Splash shield	1	191.88	OEM	0.3	Body	
30	E01	Repair	RT Inner panel (HSS)				6.0	Body	1.5
31	E01		Overlap Minor Panel						(0.2)
32	E01	Remove/Replace	RT Upper molding	1	96.53	OEM	0.3	Body	
33	E01	Remove/Replace	RT Wheel flare	1	121.48	OEM	0.4	Body	
34	E01	Remove/Install	LT Wheel flare				0.4	Body	
35	E01	Sublet	RT Qtr glass FORD w/o privacy	1	145.00	Glass			
36	E01	Remove/Install	RT Pillar trim ebony				0.0	Body	
37	E01	Remove/Install	RT Rear pillar trim w/o 9,12 speaker audio ebony				0.0	Body	
38	E01	Remove/Install	RT Qtr trim panel w/INTERCEPTOR				0.0	Body	
39	E01	Remove/Install	LT Pillar trim ebony				0.2	Body	
40	E01	Remove/Install	LT Rear pillar trim w/o 9,12 speaker audio ebony				0.2	Body	
41	E01	Remove/Install	LT Qtr trim panel w/INTERCEPTOR				0.5	Body	
42	E01	Blend	Rt Roof Rail						0.6
43	E01	Remove/Install	RT Rear w/strip				0.2	Body	
44	E01	Remove/Replace	RT Vent grille	1	31.13	OEM	0.1	Body	
45	E01	Remove/Replace	RT Reinforcement	1	3.03	OEM			
46	E01		<b>FUEL SYSTEM</b>						
47	E01	Remove/Install	R&I fuel tank				1.3	Mech	
48	E01		<b>REAR SUSPENSION</b>						
49	E01	Remove/Install	R&I rear suspension both sides				4.0	Mech	
50	E01		<b>REAR BODY &amp; FLOOR</b>						
51	E01	Remove/Replace	Panel reinf	1	342.43	OEM	14.5	Body	1.0
52	E01		Overlap Major Non-Adj. Panel						(0.2)
53	E01	Remove/Replace	Panel below gate (HSS)	1	158.08	OEM	0.0	Body	1.0
54	E01		Overlap Major Adj. Panel						(0.4)
55	E01		Add for Inside						0.7
56	E01	Remove/Replace	Rear floor pan (BOR)	1	1,302.42	OEM	17.7	Body	2.0
57	E01		Overlap Major Non-Adj. Panel						(0.2)
58	E01	Remove/Replace	RT Sidemember (BOR)	1	779.02	OEM	14.1	Body	1.5
			NOTE: PARTS: Part is constructed of boron and high strength steel. LABOR: Time is after fuel tank, suspension, panel reinforcement, panel below gate and all necessary bolted-on parts are removed. Time is for complete replacement as outlined in the OEM service manual.						
59	E01		Overlap Major Non-Adj. Panel						(0.2)
60	E01	Remove/Replace	Deduct for Overlap				(6.0)	Body	
61	E01	Remove/Replace	Under cover	1	196.17	OEM	0.3	Body	
62	E01		<b>LIFT GATE</b>						
63	E01	Remove/Replace	Lift gate	1	920.28	OEM	4.5	Body	3.5
64	E01		Overlap Major Adj. Panel						(0.4)

T = Taxable Item, RPD = Related Prior Damage, AA = Appearance Allowance, UPD = Unrelated Prior Damage, PDR = Paintless Dent Repair, A/M = Aftermarket, Rechr = Rechromed, Reman = Remanufactured, OEM = New Original Equipment Manufacturer, Recor = Re-cored, RECOND = Reconditioned, LKQ = Like Kind Quality or Used, Diag = Diagnostic, Elec = Electrical, Mech = Mechanical, Ref = Refinish, Struc = Structural

## Estimate

### RO Number:

2022 FORD Police Interceptor Utility Vehicle AWD (Fleet) 4D UTV 6-3.3L Flex Fuel Gasoline Direct Injection White

65	E01	Remove/Replace	RT Inner cover	1	43.20	OEM	0.3	Body	
66	E01	Remove/Replace	LT Inner cover	1	43.20	OEM	0.3	Body	
67	E01	Remove/Replace	Rear molding INTERCEPTOR	1	635.53	OEM	0.0	Body	
68	E01	Remove/Replace	Emblem w/o TIMBERLINE	1	48.72	OEM	0.2	Body	
69	E01	Remove/Replace	Nameplate "FLEX FUEL AWD"	1	26.03	OEM	0.1	Body	
70	E01	Remove/Replace	RT Support cylinder w/o power lift gate	1	67.67	OEM	0.0	Body	
71	E01	Remove/Replace	LT Support cylinder w/o power lift gate	1	67.67	OEM	0.0	Body	
72	E01	Remove/Replace	RT Hinge	1	52.63	OEM	0.3	Body	0.3
73	E01	Remove/Replace	LT Hinge	1	52.85	OEM	0.3	Body	0.3
74	E01	Remove/Replace	Latch manual	1	155.92	OEM	0.0	Body	
75	E01	Remove/Replace	Striker plate	1	27.52	OEM	0.2	Body	
76	E01	Remove/Install	Police lights				1.0	Body	
77	E01		<b>REAR LAMPS</b>						
78	E01	Remove/Replace	RT Tail lamp assy level 1, 2	1	759.47	OEM	0.0	Body	
79	E01	Remove/Install	LT Tail lamp assy level 1, 2				0.3	Body	
80	E01		<b>REAR BUMPER</b>						
81	E01	Remove/Replace	O/H rear bumper				2.2	Body	
82	E01	Remove/Replace	Upper cover	1	312.10	OEM	0.0	Body	2.4
83	E01		Overlap Major Non-Adj. Panel						(0.2)
84	E01	Remove/Replace	Deduct for Rear Bumper R&I				(1.2)	Body	
85	E01		Clear Coat						2.5
86	E01	Remove/Replace	RT Side support	1	40.17	OEM	0.1	Body	
87	E01	Remove/Replace	Lower cover	1	334.08	OEM	0.0	Body	
88	E01	Remove/Replace	Lower cover rivet	2	8.50	OEM			
89	E01	Remove/Replace	Support	1	145.87	OEM	0.2	Body	
90	E01	Remove/Replace	Isolator	1	123.20	OEM	0.2	Body	
91	E01	Remove/Replace	Trailer hitch	1	749.67	OEM	0.4	Body	
92	E01	Remove/Replace	RT Reflector	1	35.82	OEM	0.0	Body	
93	E01	Remove/Replace	Park sensor	2	240.66	OEM	0.1	Body	
94	E01	Remove/Replace	Wire harness w/o power lift gate	1	193.33	OEM	0.0	Body	
95	E01		<b>VEHICLE DIAGNOSTICS</b>						
96	E01	Repair	Pre-repair scan				0.5	Mech	
97	E01	Repair	Post-repair scan				0.5	Mech	
98	E01		<b>*MISCELLANEOUS CHARGES*</b>						
99	E01	Remove/Replace	Corrosion protection	1	10.00	Other	0.2	Body	
100	E01	Remove/Replace	Cover car	1	10.00	Other			
101	E01	Remove/Replace	Cover interior	1	8.00	Other	0.3	Body	
102	E01	Remove/Replace	Flex additive	1	12.50	Other			
103	E01	Sublet	Hazardous waste removal	1	5.00	Other			
104	E01	Repair	Disconnect battery cable				0.3	Body	
105	E01	Remove/Replace	Seam sealer (2-part) & tip	1	50.00	Other	1.0	Body	

Estimate Totals	Discount \$	Markup \$	Rate \$	Total Hours	Total \$
Parts					11,987.04
Labor, Body			78.00	94.5	7,371.00

T = Taxable Item, RPD = Related Prior Damage, AA = Appearance Allowance, UPD = Unrelated Prior Damage, PDR = Paintless Dent Repair, A/M = Aftermarket, Rechr = Rechromed, Reman = Remanufactured, OEM = New Original Equipment Manufacturer, Recor = Re-cored, RECOND = Reconditioned, LKQ = Like Kind Quality or Used, Diag = Diagnostic, Elec = Electrical, Mech = Mechanical, Ref = Refinish, Struc = Structural

## Estimate

### RO Number:

2022 FORD Police Interceptor Utility Vehicle AWD (Fleet) 4D UTV 6-3.3L Flex Fuel Gasoline Direct Injection White

Labor, Refinish	78.00	19.8	1,544.40
Labor, Frame	120.00	3.0	360.00
Labor, Mechanical	150.00	7.2	1,080.00
Material, Paint	58.00	19.8	1,148.40
Miscellaneous			240.50
<b>Subtotal</b>			<b>23,731.34</b>
Sales Tax			0.00
<b>Grand Total</b>			<b>23,731.34</b>
<b>Net Total</b>			<b>23,731.34</b>

Estimate Version	Total \$
Original	23,742.94

Insurance Total \$:	0.00
Received from Insurance \$:	0.00
Balance due from Insurance \$:	0.00

Customer Total \$:	23,742.94
Received from Customer \$:	0.00
Balance due from Customer \$:	23,742.94

T = Taxable Item, RPD = Related Prior Damage, AA = Appearance Allowance, UPD = Unrelated Prior Damage, PDR = Paintless Dent Repair, A/M = Aftermarket, Rechr = Rechromed, Reman = Remanufactured, OEM = New Original Equipment Manufacturer, Recor = Re-cored, RECOND = Reconditioned, LKQ = Like Kind Quality or Used, Diag = Diagnostic, Elec = Electrical, Mech = Mechanical, Ref = Refinish, Struc = Structural

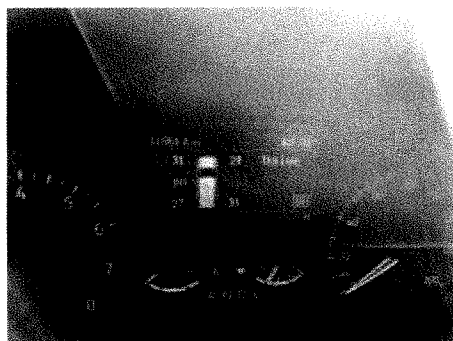
## CARSTAR North Kansas City

1233 Burlington St, 1233 Burlington St, North Kansas City, MO 64116

Phone: (816) 474-4949, Fax: (816) 471-8183

### Image Report

Owner:	KANSAS CITY	Insurance:	CUSTOMER PAY	Estimator:	Eric Haferland	Vehicle Out:
RO Number:		Claim Number:				
Year:	2022	Color:	White	License Plate:	51	Production Date:
Make:	FORD	Body Style:	4D UTV	State:	MO	Mileage In: 34,884
Model:	Police Interceptor ...	Engine:	6-3.3L Flex Fuel ...	VIN:	1FM5K8AB1NGB45850	Condition:



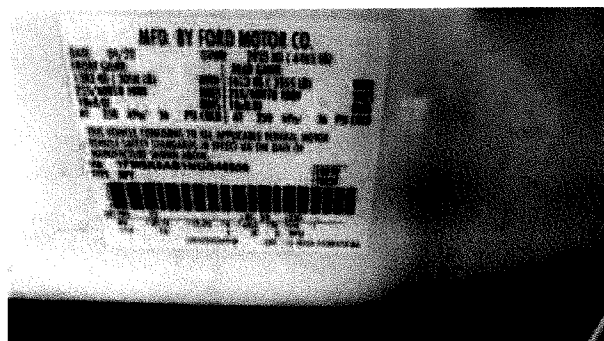
1/28/2025 E01

Comments:



1/28/2025 E01

Comments:



1/28/2025 E01

Comments:



1/28/2025 E01

Comments:



1/28/2025 E01

Comments:



1/28/2025 E01

Comments:

## CARSTAR North Kansas City

1233 Burlington St, 1233 Burlington St, North Kansas City, MO 64116

Phone: (816) 474-4949, Fax: (816) 471-8183

### Image Report

Owner:	KANSAS CITY	Insurance:	CUSTOMER PAY	Estimator:	Eric Haferland	Vehicle Out:
RO Number:		Claim Number:				
Year:	2022	Color:	White	License Plate:	51	Production Date:
Make:	FORD	Body Style:	4D UTV	State:	MO	Mileage In: 34,884
Model:	Police Interceptor ...	Engine:	6-3.3L Flex Fuel ...	VIN:	1FM5K8AB1NGB45850	Condition:



1/28/2025 E01

Comments:



1/28/2025 E01

Comments:



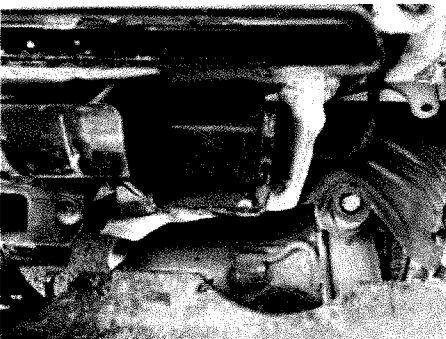
1/28/2025 E01

Comments:



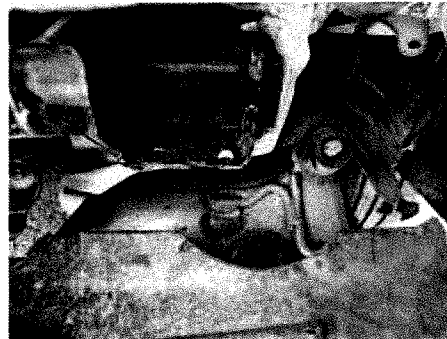
1/28/2025 E01

Comments:



1/28/2025 E01

Comments:



1/28/2025 E01

Comments:

## CARSTAR North Kansas City

1233 Burlington St, 1233 Burlington St, North Kansas City, MO 64116

Phone: (816) 474-4949, Fax: (816) 471-8183

### Image Report

Owner:	KANSAS CITY	Insurance:	CUSTOMER PAY	Estimator:	Eric Haferland	Vehicle Out:
RO Number:		Claim Number:				
Year:	2022	Color:	White	License Plate:	51	Production Date:
Make:	FORD	Body Style:	4D UTV	State:	MO	Mileage In: 34,884
Model:	Police Interceptor ...	Engine:	6-3.3L Flex Fuel ...	VIN:	1FM5K8AB1NGB45850	Condition:



1/28/2025 E01  
Comments:



1/28/2025 E01  
Comments:



1/28/2025 E01  
Comments:



1/28/2025 E01  
Comments:



1/28/2025 E01  
Comments:



1/28/2025 E01  
Comments: