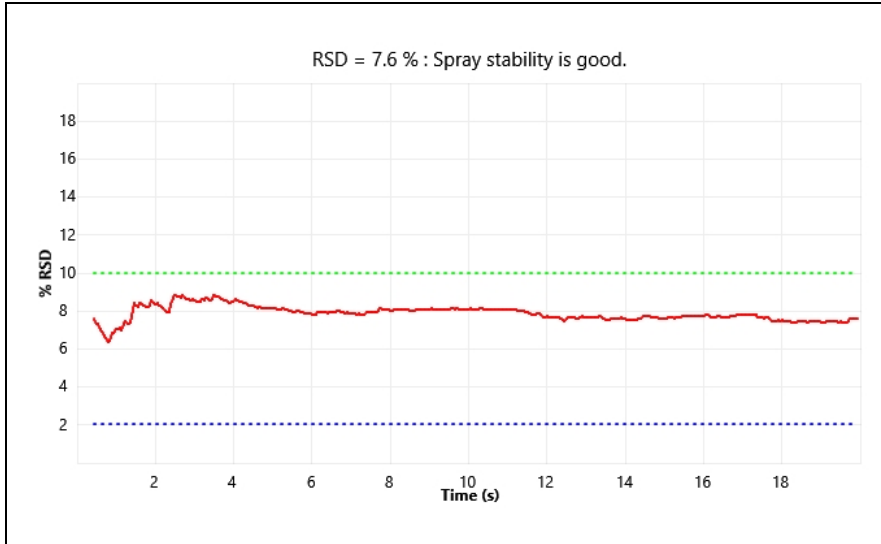


System Calibration Report

Date & Time Friday, June 27, 2025 11:05:48 AM
 Instrument Model TSQ Altis
 Instrument Serial TSQ-A-10797
 Software Version 3.4.3292

Name	Polarity	Result	Comment
System Calibration	Positive	Successful	

Source Parameters	
Source Type	H-ESI
Spray Voltage (V)	3700
Sheath Gas (Arb)	5
Aux Gas (Arb)	0
Sweep Gas (Arb)	0
Ion Transfer Tube Temp (°C)	350
Vaporizer Temp (°C)	0



Q1 calibration result					
Scan Rate	FWHM 0.2	FWHM 0.4	FWHM 0.7	FWHM 1.2	FWHM 2.0
0	Calibrated	Calibrated	Calibrated	Calibrated	Calibrated
250	Calibrated	Calibrated	Calibrated	Calibrated	Calibrated
500	Calibrated	Calibrated	Calibrated	Calibrated	Calibrated
1000	Calibrated	Calibrated	Calibrated	Calibrated	Calibrated

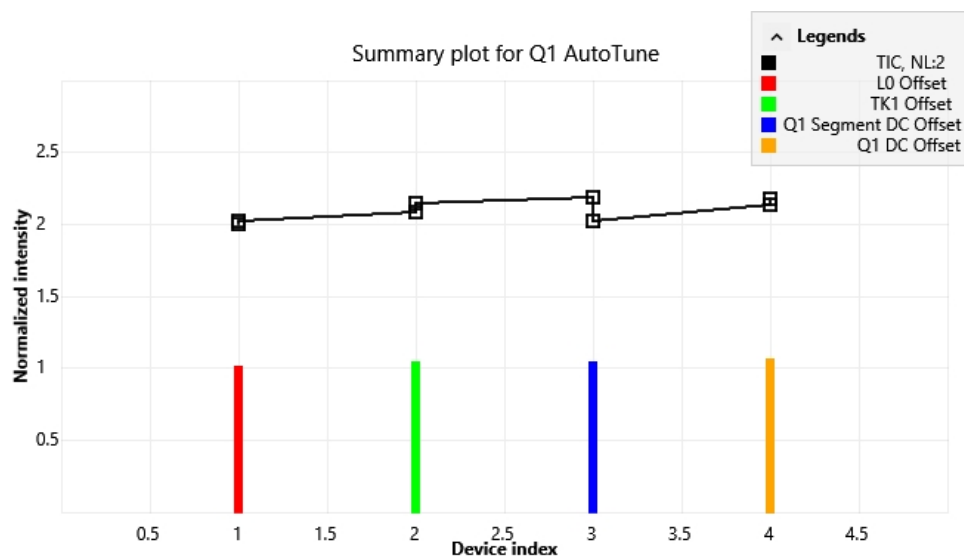
Q3 calibration result					
Scan Rate	FWHM 0.2	FWHM 0.4	FWHM 0.7	FWHM 1.2	FWHM 2.0
0	Calibrated	Calibrated	Calibrated	Calibrated	Calibrated
250	Calibrated	Calibrated	Calibrated	Calibrated	Calibrated
500	Calibrated	Calibrated	Calibrated	Calibrated	Calibrated
1000	Calibrated	Calibrated	Calibrated	Calibrated	Calibrated

Q3 high scan rate calibration result	
Scan Rate	FWHM 2.0
5000	Calibrated
15000	Calibrated

* Scan rate 0 is used for SRM scan and SIM scan with dwell time option

Electron multiplier gain calibration passed
 Q1/Q3 AutoTune completed

Q1 Tune



+Q1MS - Mass 69.04		
Device	Initial Setting	Final Setting
SRIG_RF	29.2	27.8
Q0_AMP	317.5	317.5
Q2_AMP	160.9	160.9
L0	-0.7	-0.7
TK1	-3.7	-3.7
Q1_SDC	-5	-5
Q1_DC	-2	-2.1

+Q1MS - Mass 102.13		
Device	Initial Setting	Final Setting
SRIG_RF	32.6	31.4
Q0_AMP	394.5	394.5
Q2_AMP	195.2	195.2
L0	-0.7	-0.7
TK1	-3.6	-3.6
Q1_SDC	-5	-5
Q1_DC	-2	-2.1

+Q1MS - Mass 215.15		
Device	Initial Setting	Final Setting
SRIG_RF	48.9	48.3
Q0_AMP	524.6	524.6
Q2_AMP	281.7	281.7
L0	-0.7	-0.7
TK1	-3.6	-3.6
Q1_SDC	-5	-5
Q1_DC	-2.1	-2.1

+Q1MS - Mass 622.03		
Device	Initial Setting	Final Setting
SRIG_RF	86.9	89
Q0_AMP	681.7	681.7
Q2_AMP	475.1	475.1
L0	-0.7	-0.7
TK1	-3.4	-3.4
Q1_SDC	-5	-5
Q1_DC	-2.1	-2.2

System Calibration Report



+Q1MS - Mass 922.01		
Device	Initial Setting	Final Setting
SRIG_RF	107.6	111.7
Q0_AMP	733.4	733.4
Q2_AMP	576.7	576.7
L0	-0.7	-0.7
TK1	-3.3	-3.3
Q1_SDC	-5	-5
Q1_DC	-2.2	-2.2
+Q1MS - Mass 1521.97		
Device	Initial Setting	Final Setting
SRIG_RF	141.2	149.1
Q0_AMP	795.1	795.1
Q2_AMP	738.2	738.2
L0	-0.7	-0.7
TK1	-3	-3
Q1_SDC	-5	-5
Q1_DC	-2.3	-2.3

System Calibration Report



Q1 Mass Calibration Check Results

RESULT PW 0.2 SR 0				
Calibrant	Peak Width (Da.)	Mass Position (Da.)	Result	Comments
69.04	0.18	69.05	Pass	
102.13	0.18	102.14	Pass	
215.15	0.21	215.14	Pass	
622.03	0.20	622.03	Pass	
922.01	0.22	922.01	Pass	
1521.97	0.24	1522.00	Pass	
RESULT PW 0.4 SR 0				
Calibrant	Peak Width (Da.)	Mass Position (Da.)	Result	Comments
69.04	0.39	69.03	Pass	
102.13	0.39	102.12	Pass	
215.15	0.43	215.14	Pass	
622.03	0.37	622.04	Pass	
922.01	0.40	922.01	Pass	
1521.97	0.41	1521.97	Pass	
RESULT PW 0.7 SR 0				
Calibrant	Peak Width (Da.)	Mass Position (Da.)	Result	Comments
69.04	0.68	69.04	Pass	
102.13	0.74	102.13	Pass	
215.15	0.73	215.16	Pass	
622.03	0.75	622.02	Pass	
922.01	0.69	922.02	Pass	
1521.97	0.75	1521.94	Pass	
RESULT PW 0.2 SR 250				
Calibrant	Peak Width (Da.)	Mass Position (Da.)	Result	Comments
69.04	0.20	69.05	Pass	
102.13	0.21	102.13	Pass	
215.15	0.21	215.15	Pass	
622.03	0.22	622.03	Pass	
922.01	0.24	922.01	Pass	
1521.97	0.27	1521.97	Pass	
RESULT PW 0.4 SR 250				
Calibrant	Peak Width (Da.)	Mass Position (Da.)	Result	Comments
69.04	0.40	69.04	Pass	
102.13	0.39	102.13	Pass	
215.15	0.38	215.16	Pass	
622.03	0.41	622.03	Pass	
922.01	0.41	922.01	Pass	
1521.97	0.41	1521.96	Pass	
RESULT PW 0.7 SR 250				
Calibrant	Peak Width (Da.)	Mass Position (Da.)	Result	Comments
69.04	0.69	69.04	Pass	
102.13	0.68	102.13	Pass	
215.15	0.69	215.16	Pass	
622.03	0.69	622.02	Pass	
922.01	0.70	922.01	Pass	
1521.97	0.70	1521.96	Pass	
RESULT PW 1.2 SR 250				
Calibrant	Peak Width (Da.)	Mass Position (Da.)	Result	Comments
69.04	1.17	69.04	Pass	
102.13	1.18	102.12	Pass	
215.15	1.15	215.14	Pass	
622.03	1.20	622.04	Pass	
922.01	1.20	922.01	Pass	
1521.97	1.20	1521.97	Pass	
RESULT PW 0.2 SR 500				
Calibrant	Peak Width (Da.)	Mass Position (Da.)	Result	Comments
69.04	0.20	69.04	Pass	
102.13	0.21	102.12	Pass	
215.15	0.22	215.16	Pass	

Serial Number: TSQ-A-10797

Friday, June 27, 2025 11:21:21 AM

System Calibration Report

622.03	0.21	622.03	Pass	
922.01	0.23	922.01	Pass	
1521.97	0.32	1521.97	Pass	

RESULT PW 0.4 SR 500

Calibrant	Peak Width (Da.)	Mass Position (Da.)	Result	Comments
69.04	0.40	69.04	Pass	
102.13	0.39	102.13	Pass	
215.15	0.41	215.15	Pass	
622.03	0.41	622.03	Pass	
922.01	0.41	922.01	Pass	
1521.97	0.41	1521.95	Pass	

RESULT PW 0.7 SR 500

Calibrant	Peak Width (Da.)	Mass Position (Da.)	Result	Comments
69.04	0.69	69.04	Pass	
102.13	0.68	102.13	Pass	
215.15	0.70	215.16	Pass	
622.03	0.71	622.03	Pass	
922.01	0.71	922.01	Pass	
1521.97	0.69	1521.96	Pass	

RESULT PW 1.2 SR 500

Calibrant	Peak Width (Da.)	Mass Position (Da.)	Result	Comments
69.04	1.17	69.05	Pass	
102.13	1.18	102.13	Pass	
215.15	1.21	215.15	Pass	
622.03	1.20	622.03	Pass	
922.01	1.20	922.01	Pass	
1521.97	1.20	1521.96	Pass	

RESULT PW 0.2 SR 1000

Calibrant	Peak Width (Da.)	Mass Position (Da.)	Result	Comments
69.04	0.20	69.04	Pass	
102.13	0.21	102.13	Pass	
215.15	0.23	215.16	Pass	
622.03	0.23	622.03	Pass	
922.01	0.23	922.01	Pass	
1521.97	0.38	1521.97	Pass	

RESULT PW 0.4 SR 1000

Calibrant	Peak Width (Da.)	Mass Position (Da.)	Result	Comments
69.04	0.39	69.04	Pass	
102.13	0.40	102.13	Pass	
215.15	0.41	215.15	Pass	
622.03	0.39	622.02	Pass	
922.01	0.42	922.01	Pass	
1521.97	0.42	1521.96	Pass	

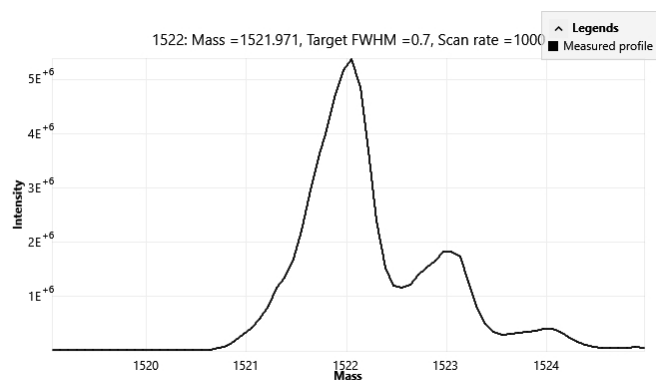
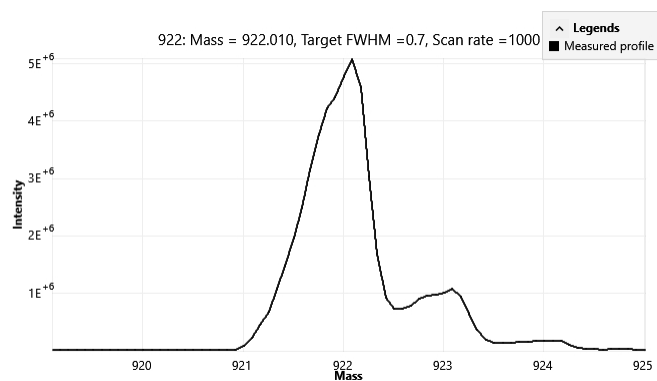
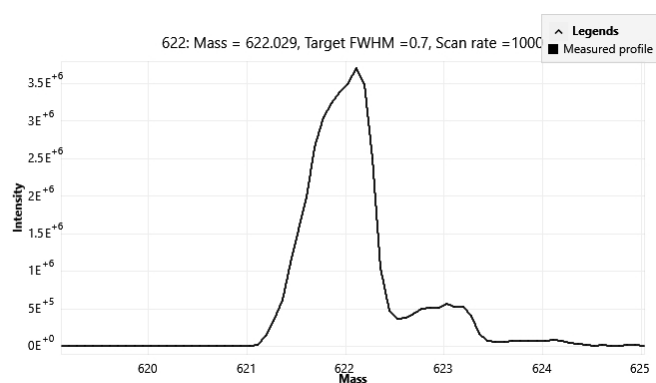
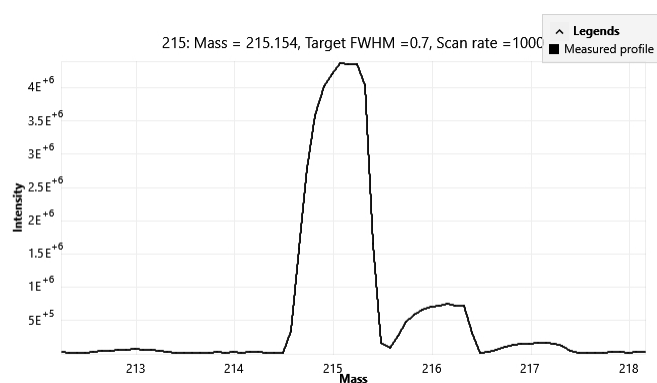
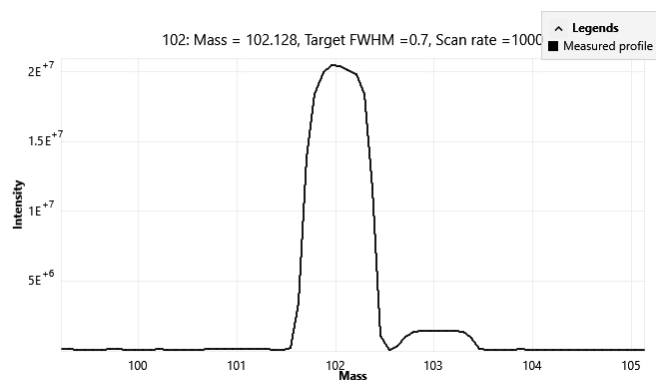
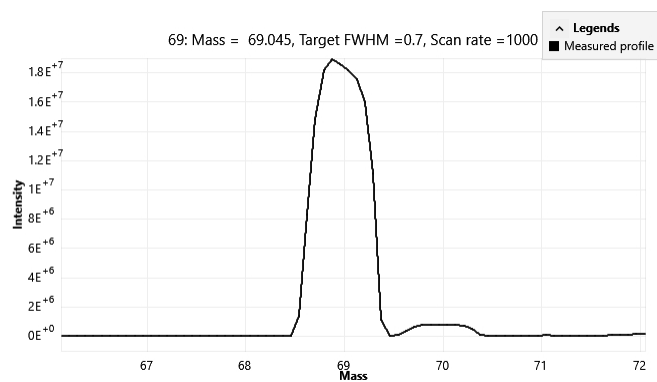
RESULT PW 0.7 SR 1000

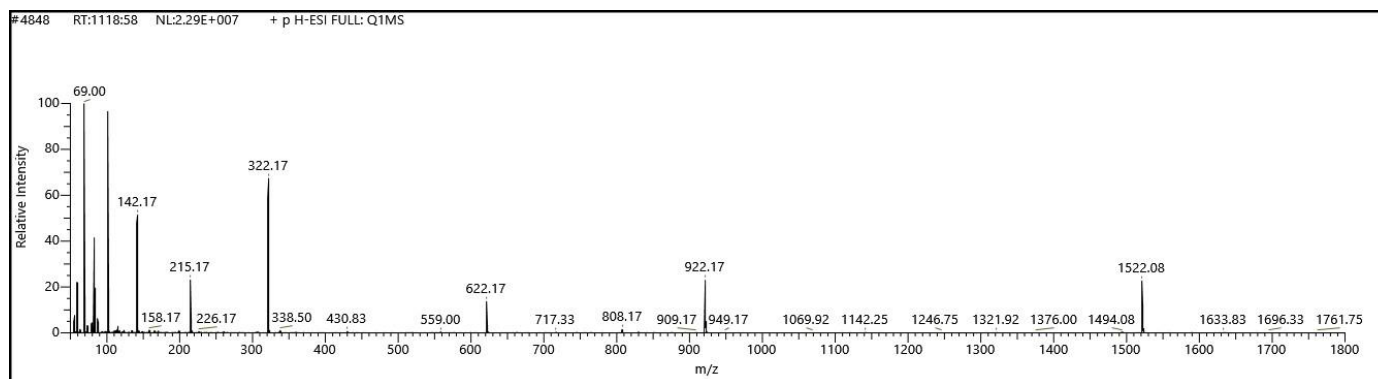
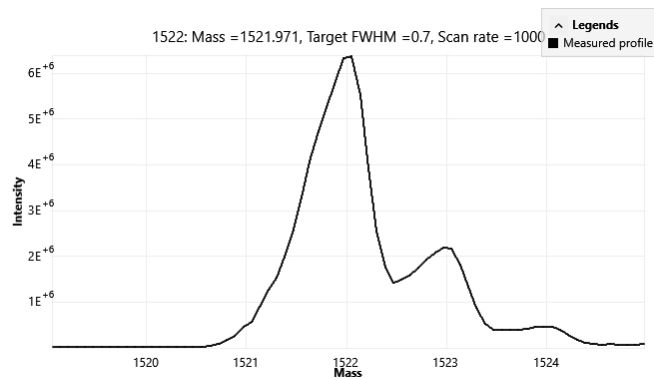
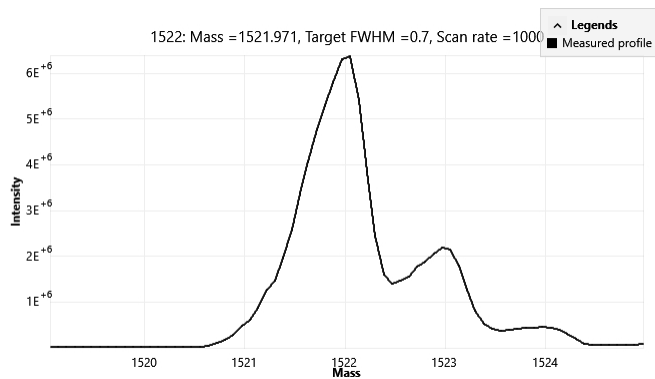
Calibrant	Peak Width (Da.)	Mass Position (Da.)	Result	Comments
69.04	0.67	69.04	Pass	
102.13	0.70	102.13	Pass	
215.15	0.69	215.15	Pass	
622.03	0.72	622.02	Pass	
922.01	0.70	922.00	Pass	
1521.97	0.72	1521.94	Pass	

RESULT PW 1.2 SR 1000

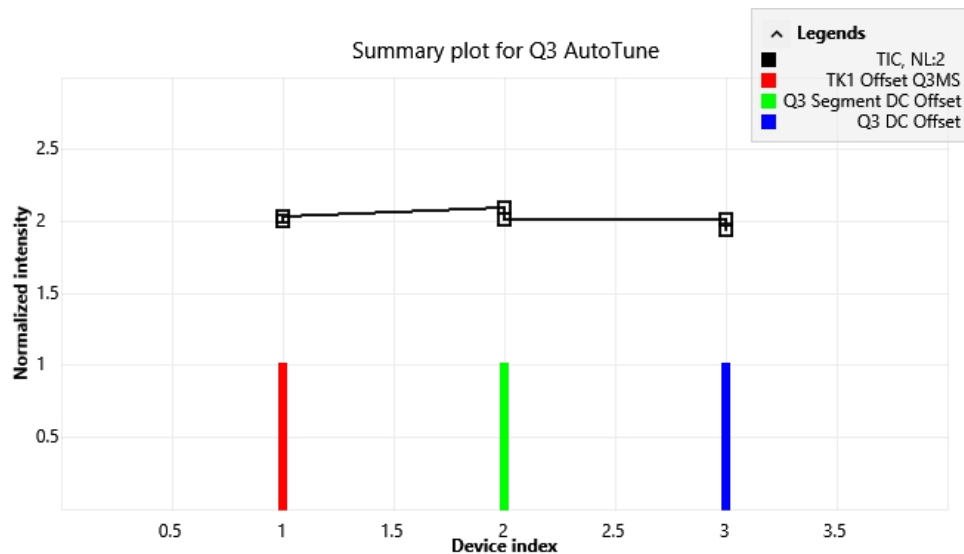
Calibrant	Peak Width (Da.)	Mass Position (Da.)	Result	Comments
69.04	1.18	69.04	Pass	
102.13	1.20	102.13	Pass	
215.15	1.21	215.16	Pass	
622.03	1.23	622.03	Pass	
922.01	1.19	922.00	Pass	
1521.97	1.22	1521.96	Pass	

Q1 Mass Calibration Check Spectra





Q3 Tune



+Q3MS - Mass 69.04		
Device	Initial Setting	Final Setting
TK1	-3.7	-3.7
Q3_SDC	-5.4	-5.4
Q3_DC	-2.7	-2.7

+Q3MS - Mass 102.13		
Device	Initial Setting	Final Setting
TK1	-3.7	-3.7
Q3_SDC	-5.4	-5.4
Q3_DC	-2.7	-2.8

+Q3MS - Mass 215.15		
Device	Initial Setting	Final Setting
TK1	-3.6	-3.6
Q3_SDC	-5.6	-5.6
Q3_DC	-2.8	-2.9

+Q3MS - Mass 622.03		
Device	Initial Setting	Final Setting
TK1	-3.3	-3.3
Q3_SDC	-6.1	-6.1
Q3_DC	-3.2	-3.2

+Q3MS - Mass 922.01		
Device	Initial Setting	Final Setting
TK1	-3.1	-3.1
Q3_SDC	-6.5	-6.5
Q3_DC	-3.5	-3.5

+Q3MS - Mass 1521.97		
Device	Initial Setting	Final Setting
TK1	-2.6	-2.6
Q3_SDC	-7.4	-7.4
Q3_DC	-4.1	-4

System Calibration Report

Q3 Mass Calibration Check Results

RESULT PW 0.2 SR 0				
Calibrant	Peak Width (Da.)	Mass Position (Da.)	Result	Comments
69.04	0.21	69.05	Pass	
102.13	0.19	102.13	Pass	
215.15	0.19	215.15	Pass	
622.03	0.19	622.04	Pass	
922.01	0.20	922.02	Pass	
1521.97	0.24	1521.98	Pass	
RESULT PW 0.4 SR 0				
Calibrant	Peak Width (Da.)	Mass Position (Da.)	Result	Comments
69.04	0.39	69.05	Pass	
102.13	0.35	102.12	Pass	
215.15	0.41	215.15	Pass	
622.03	0.41	622.01	Pass	
922.01	0.39	921.99	Pass	
1521.97	0.41	1521.94	Pass	
RESULT PW 0.7 SR 0				
Calibrant	Peak Width (Da.)	Mass Position (Da.)	Result	Comments
69.04	0.74	69.01	Pass	
102.13	0.72	102.13	Pass	
215.15	0.67	215.16	Pass	
622.03	0.73	622.00	Pass	
922.01	0.73	921.98	Pass	
1521.97	0.66	1521.95	Pass	
RESULT PW 0.2 SR 250				
Calibrant	Peak Width (Da.)	Mass Position (Da.)	Result	Comments
69.04	0.22	69.05	Pass	
102.13	0.21	102.13	Pass	
215.15	0.21	215.15	Pass	
622.03	0.23	622.03	Pass	
922.01	0.22	922.01	Pass	
1521.97	0.25	1521.96	Pass	
RESULT PW 0.4 SR 250				
Calibrant	Peak Width (Da.)	Mass Position (Da.)	Result	Comments
69.04	0.41	69.04	Pass	
102.13	0.41	102.13	Pass	
215.15	0.39	215.16	Pass	
622.03	0.41	622.03	Pass	
922.01	0.40	922.01	Pass	
1521.97	0.41	1521.96	Pass	
RESULT PW 0.7 SR 250				
Calibrant	Peak Width (Da.)	Mass Position (Da.)	Result	Comments
69.04	0.68	69.04	Pass	
102.13	0.68	102.14	Pass	
215.15	0.69	215.16	Pass	
622.03	0.70	622.03	Pass	
922.01	0.70	922.01	Pass	
1521.97	0.71	1521.96	Pass	
RESULT PW 1.2 SR 250				
Calibrant	Peak Width (Da.)	Mass Position (Da.)	Result	Comments
69.04	1.18	69.04	Pass	
102.13	1.19	102.13	Pass	
215.15	1.20	215.15	Pass	
622.03	1.19	622.02	Pass	
922.01	1.19	922.01	Pass	
1521.97	1.20	1521.96	Pass	
RESULT PW 0.2 SR 500				
Calibrant	Peak Width (Da.)	Mass Position (Da.)	Result	Comments
69.04	0.21	69.04	Pass	
102.13	0.21	102.13	Pass	
215.15	0.21	215.15	Pass	

Serial Number: TSQ-A-10797

Friday, June 27, 2025 11:21:21 AM

System Calibration Report

622.03	0.21	622.03	Pass	
922.01	0.21	922.01	Pass	
1521.97	0.26	1521.96	Pass	

RESULT PW 0.4 SR 500

Calibrant	Peak Width (Da.)	Mass Position (Da.)	Result	Comments
69.04	0.41	69.04	Pass	
102.13	0.42	102.13	Pass	
215.15	0.40	215.15	Pass	
622.03	0.40	622.02	Pass	
922.01	0.42	922.00	Pass	
1521.97	0.40	1521.96	Pass	

RESULT PW 0.7 SR 500

Calibrant	Peak Width (Da.)	Mass Position (Da.)	Result	Comments
69.04	0.68	69.04	Pass	
102.13	0.69	102.13	Pass	
215.15	0.70	215.15	Pass	
622.03	0.68	622.02	Pass	
922.01	0.73	922.00	Pass	
1521.97	0.69	1521.96	Pass	

RESULT PW 1.2 SR 500

Calibrant	Peak Width (Da.)	Mass Position (Da.)	Result	Comments
69.04	1.17	69.06	Pass	
102.13	1.17	102.14	Pass	
215.15	1.19	215.16	Pass	
622.03	1.20	622.03	Pass	
922.01	1.22	922.00	Pass	
1521.97	1.21	1521.96	Pass	

RESULT PW 0.2 SR 1000

Calibrant	Peak Width (Da.)	Mass Position (Da.)	Result	Comments
69.04	0.20	69.05	Pass	
102.13	0.20	102.13	Pass	
215.15	0.21	215.16	Pass	
622.03	0.20	622.03	Pass	
922.01	0.22	922.01	Pass	
1521.97	0.23	1521.95	Pass	

RESULT PW 0.4 SR 1000

Calibrant	Peak Width (Da.)	Mass Position (Da.)	Result	Comments
69.04	0.39	69.04	Pass	
102.13	0.40	102.12	Pass	
215.15	0.40	215.15	Pass	
622.03	0.38	622.03	Pass	
922.01	0.42	922.01	Pass	
1521.97	0.40	1521.96	Pass	

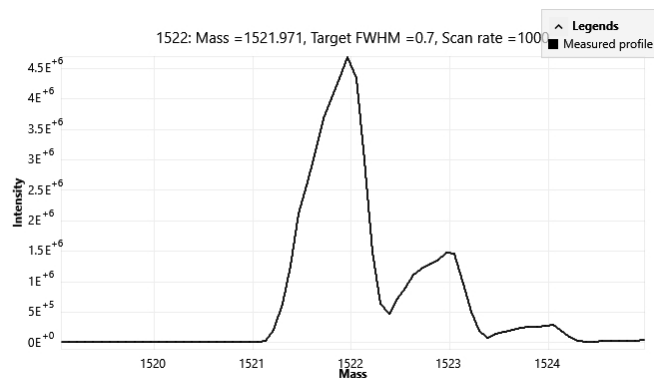
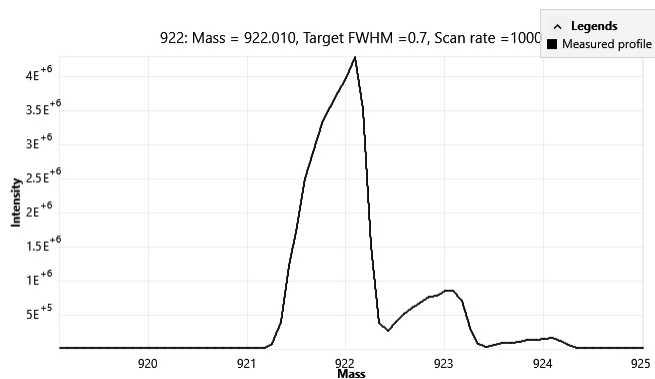
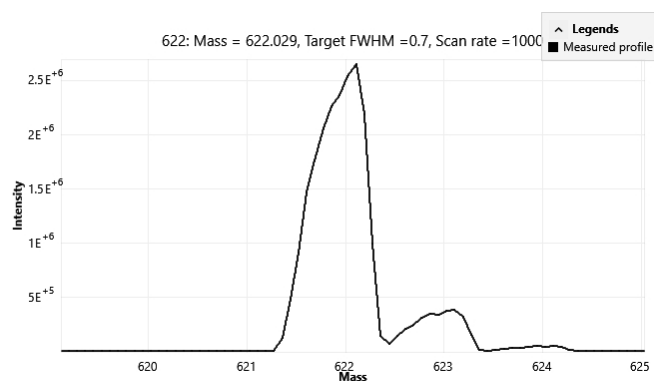
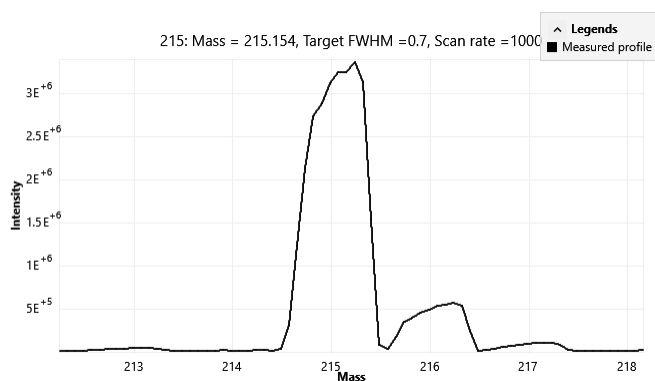
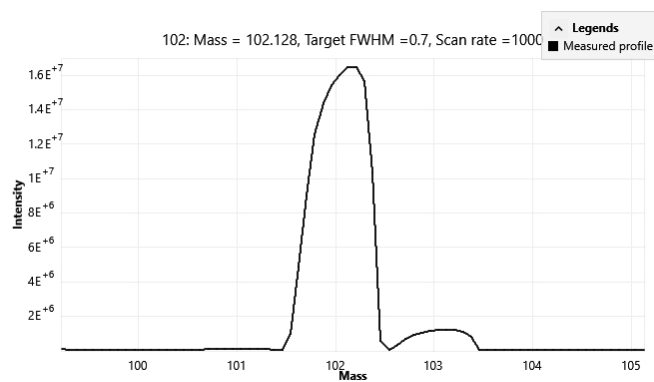
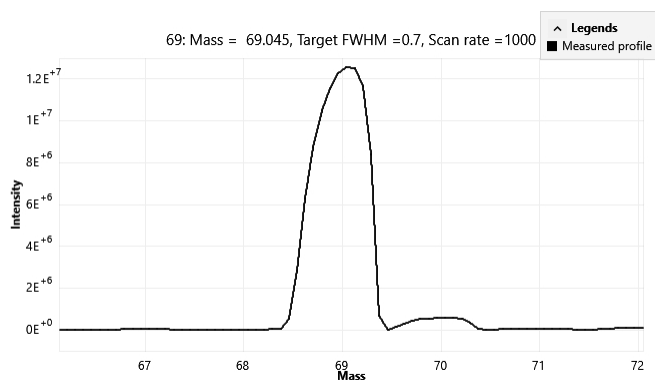
RESULT PW 0.7 SR 1000

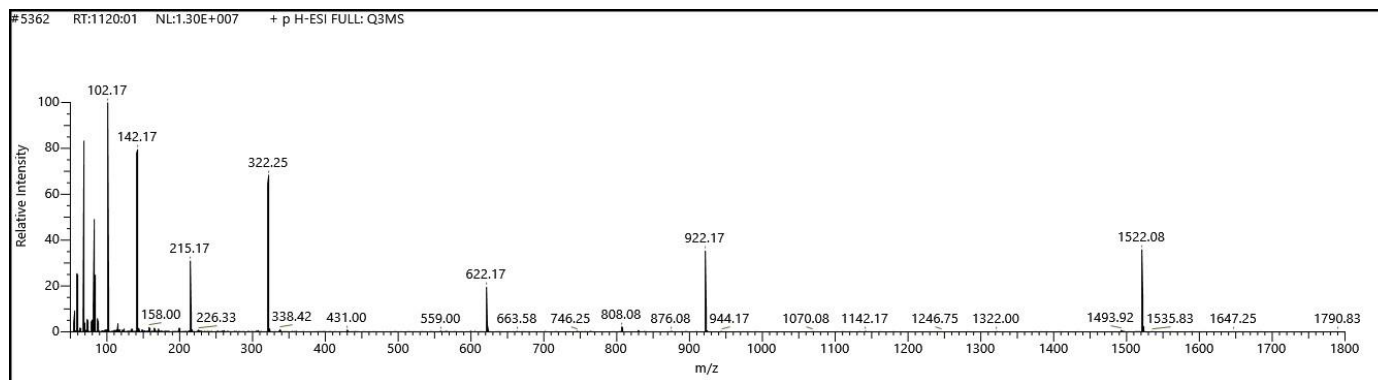
Calibrant	Peak Width (Da.)	Mass Position (Da.)	Result	Comments
69.04	0.70	69.04	Pass	
102.13	0.68	102.12	Pass	
215.15	0.71	215.15	Pass	
622.03	0.69	622.02	Pass	
922.01	0.71	922.01	Pass	
1521.97	0.69	1521.95	Pass	

RESULT PW 1.2 SR 1000

Calibrant	Peak Width (Da.)	Mass Position (Da.)	Result	Comments
69.04	1.17	69.05	Pass	
102.13	1.18	102.13	Pass	
215.15	1.18	215.16	Pass	
622.03	1.24	622.02	Pass	
922.01	1.21	922.01	Pass	
1521.97	1.19	1521.97	Pass	

Q3 Mass Calibration Check Spectra





Electron Multiplier Calibration	
Coarse Calibration	-1408.065
Previous A	13.021
Previous B	-374.145
Previous EM Full Scan	-1204.035
Previous EM SRM	-1367.854
New A	12.385
New B	-356.481
New EM Full Scan	-1215.658
New EM SRM	-1382.551

