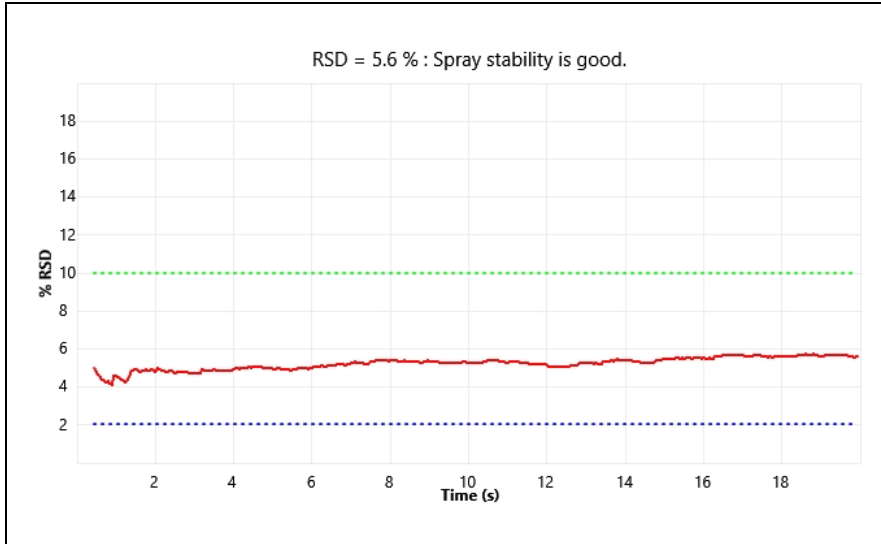


# System Calibration Report

Date & Time Friday, June 27, 2025 10:51:52 AM  
 Instrument Model TSQ Altis  
 Instrument Serial EXRTSQ-A-10602  
 Software Version 3.4.3292

Name	Polarity	Result	Comment
System Calibration	Positive	Successful	

Source Parameters	
Source Type	H-ESI
Spray Voltage (V)	3700
Sheath Gas (Arb)	3
Aux Gas (Arb)	0
Sweep Gas (Arb)	0
Ion Transfer Tube Temp (°C)	325
Vaporizer Temp (°C)	0



Q1 calibration result					
Scan Rate	FWHM 0.2	FWHM 0.4	FWHM 0.7	FWHM 1.2	FWHM 2.0
0	Calibrated	Calibrated	Calibrated	Calibrated	Calibrated
250	Calibrated	Calibrated	Calibrated	Calibrated	Calibrated
500	Calibrated	Calibrated	Calibrated	Calibrated	Calibrated
1000	Calibrated	Calibrated	Calibrated	Calibrated	Calibrated

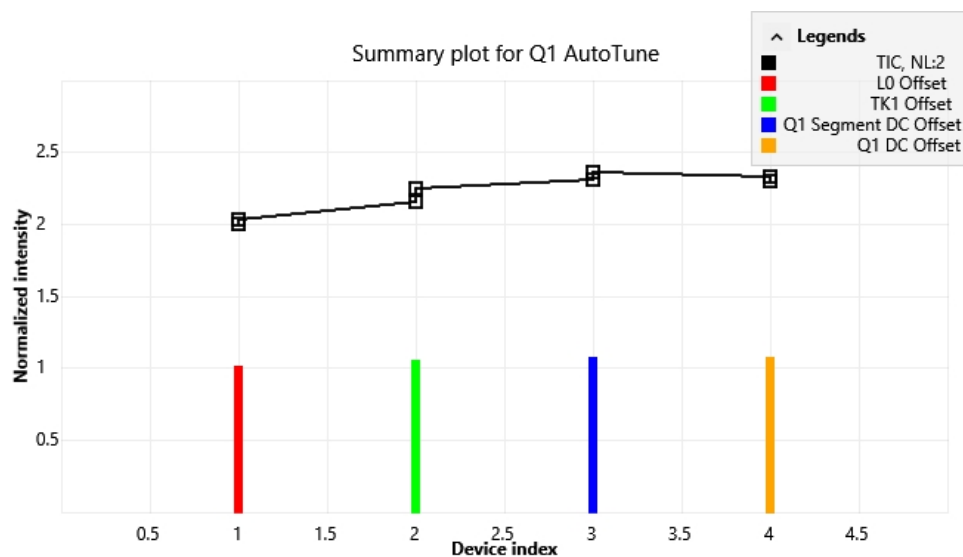
Q3 calibration result					
Scan Rate	FWHM 0.2	FWHM 0.4	FWHM 0.7	FWHM 1.2	FWHM 2.0
0	Calibrated	Calibrated	Calibrated	Calibrated	Calibrated
250	Calibrated	Calibrated	Calibrated	Calibrated	Calibrated
500	Calibrated	Calibrated	Calibrated	Calibrated	Calibrated
1000	Calibrated	Calibrated	Calibrated	Calibrated	Calibrated

Q3 high scan rate calibration result	
Scan Rate	FWHM 2.0
5000	Calibrated
15000	Calibrated

\* Scan rate 0 is used for SRM scan and SIM scan with dwell time option

Electron multiplier gain calibration passed  
 Q1/Q3 AutoTune completed

## Q1 Tune



+Q1MS - Mass 69.04		
Device	Initial Setting	Final Setting
SRIG_RF	31.2	32.3
Q0_AMP	317.5	317.5
Q2_AMP	160.9	160.9
L0	-2	-2
TK1	-2.8	-2.8
Q1_SDC	-4	-4
Q1_DC	-2.3	-2.4

+Q1MS - Mass 102.13		
Device	Initial Setting	Final Setting
SRIG_RF	35	36.6
Q0_AMP	394.5	394.5
Q2_AMP	195.2	195.2
L0	-2	-2
TK1	-2.8	-2.8
Q1_SDC	-4	-4
Q1_DC	-2.3	-2.4

+Q1MS - Mass 215.15		
Device	Initial Setting	Final Setting
SRIG_RF	52.6	56.3
Q0_AMP	524.6	524.6
Q2_AMP	281.7	281.7
L0	-2	-2
TK1	-2.8	-2.8
Q1_SDC	-4.5	-4.5
Q1_DC	-2.3	-2.4

+Q1MS - Mass 622.03		
Device	Initial Setting	Final Setting
SRIG_RF	94.2	103.9
Q0_AMP	681.7	681.7
Q2_AMP	475.1	475.1
L0	-2	-2
TK1	-2.8	-2.8
Q1_SDC	-6	-6
Q1_DC	-2.3	-2.4

# System Calibration Report



+Q1MS - Mass 922.01		
Device	Initial Setting	Final Setting
SRIG_RF	116.9	130.4
Q0_AMP	733.4	733.4
Q2_AMP	576.7	576.7
L0	-2	-2
TK1	-2.7	-2.7
Q1_SDC	-7.5	-7.5
Q1_DC	-2.4	-2.4
+Q1MS - Mass 1521.97		
Device	Initial Setting	Final Setting
SRIG_RF	153.8	174.1
Q0_AMP	795.1	795.1
Q2_AMP	738.2	738.2
L0	-2	-2
TK1	-2.7	-2.7
Q1_SDC	-10	-10
Q1_DC	-2.4	-2.4

# System Calibration Report



## Q1 Mass Calibration Check Results

RESULT PW 0.2 SR 0				
Calibrant	Peak Width (Da.)	Mass Position (Da.)	Result	Comments
69.04	0.20	69.04	Pass	
102.13	0.21	102.13	Pass	
215.15	0.19	215.16	Pass	
622.03	0.21	622.02	Pass	
922.01	0.20	922.00	Pass	
1521.97	0.18	1521.95	Pass	
RESULT PW 0.4 SR 0				
Calibrant	Peak Width (Da.)	Mass Position (Da.)	Result	Comments
69.04	0.40	69.04	Pass	
102.13	0.40	102.11	Pass	
215.15	0.40	215.15	Pass	
622.03	0.41	622.00	Pass	
922.01	0.38	921.98	Pass	
1521.97	0.41	1521.95	Pass	
RESULT PW 0.7 SR 0				
Calibrant	Peak Width (Da.)	Mass Position (Da.)	Result	Comments
69.04	0.72	69.05	Pass	
102.13	0.69	102.12	Pass	
215.15	0.72	215.14	Pass	
622.03	0.71	621.98	Pass	
922.01	0.72	921.98	Pass	
1521.97	0.68	1521.93	Pass	
RESULT PW 0.2 SR 250				
Calibrant	Peak Width (Da.)	Mass Position (Da.)	Result	Comments
69.04	0.20	69.05	Pass	
102.13	0.21	102.13	Pass	
215.15	0.21	215.16	Pass	
622.03	0.21	622.03	Pass	
922.01	0.22	922.01	Pass	
1521.97	0.23	1521.96	Pass	
RESULT PW 0.4 SR 250				
Calibrant	Peak Width (Da.)	Mass Position (Da.)	Result	Comments
69.04	0.40	69.04	Pass	
102.13	0.40	102.13	Pass	
215.15	0.39	215.16	Pass	
622.03	0.40	622.03	Pass	
922.01	0.41	922.01	Pass	
1521.97	0.41	1521.96	Pass	
RESULT PW 0.7 SR 250				
Calibrant	Peak Width (Da.)	Mass Position (Da.)	Result	Comments
69.04	0.68	69.04	Pass	
102.13	0.67	102.13	Pass	
215.15	0.70	215.16	Pass	
622.03	0.69	622.03	Pass	
922.01	0.70	922.01	Pass	
1521.97	0.69	1521.96	Pass	
RESULT PW 1.2 SR 250				
Calibrant	Peak Width (Da.)	Mass Position (Da.)	Result	Comments
69.04	1.17	69.04	Pass	
102.13	1.20	102.13	Pass	
215.15	1.19	215.16	Pass	
622.03	1.18	622.02	Pass	
922.01	1.19	922.01	Pass	
1521.97	1.19	1521.96	Pass	
RESULT PW 0.2 SR 500				
Calibrant	Peak Width (Da.)	Mass Position (Da.)	Result	Comments
69.04	0.22	69.04	Pass	
102.13	0.20	102.13	Pass	
215.15	0.20	215.16	Pass	

Serial Number: EXRTSQ-A-10602

Friday, June 27, 2025 11:06:03 AM

3/11

# System Calibration Report

622.03	0.22	622.03	Pass	
922.01	0.22	922.00	Pass	
1521.97	0.24	1521.96	Pass	

## RESULT PW 0.4 SR 500

Calibrant	Peak Width (Da.)	Mass Position (Da.)	Result	Comments
69.04	0.39	69.05	Pass	
102.13	0.40	102.13	Pass	
215.15	0.39	215.15	Pass	
622.03	0.44	622.03	Pass	
922.01	0.41	922.00	Pass	
1521.97	0.42	1521.96	Pass	

## RESULT PW 0.7 SR 500

Calibrant	Peak Width (Da.)	Mass Position (Da.)	Result	Comments
69.04	0.67	69.04	Pass	
102.13	0.68	102.13	Pass	
215.15	0.70	215.16	Pass	
622.03	0.72	622.02	Pass	
922.01	0.70	922.00	Pass	
1521.97	0.68	1521.97	Pass	

## RESULT PW 1.2 SR 500

Calibrant	Peak Width (Da.)	Mass Position (Da.)	Result	Comments
69.04	1.18	69.05	Pass	
102.13	1.20	102.13	Pass	
215.15	1.19	215.15	Pass	
622.03	1.22	622.03	Pass	
922.01	1.20	922.01	Pass	
1521.97	1.20	1521.96	Pass	

## RESULT PW 0.2 SR 1000

Calibrant	Peak Width (Da.)	Mass Position (Da.)	Result	Comments
69.04	0.21	69.04	Pass	
102.13	0.21	102.13	Pass	
215.15	0.20	215.15	Pass	
622.03	0.21	622.03	Pass	
922.01	0.25	922.01	Pass	
1521.97	0.36	1521.96	Pass	

## RESULT PW 0.4 SR 1000

Calibrant	Peak Width (Da.)	Mass Position (Da.)	Result	Comments
69.04	0.39	69.04	Pass	
102.13	0.40	102.12	Pass	
215.15	0.42	215.15	Pass	
622.03	0.41	622.02	Pass	
922.01	0.41	922.01	Pass	
1521.97	0.41	1521.96	Pass	

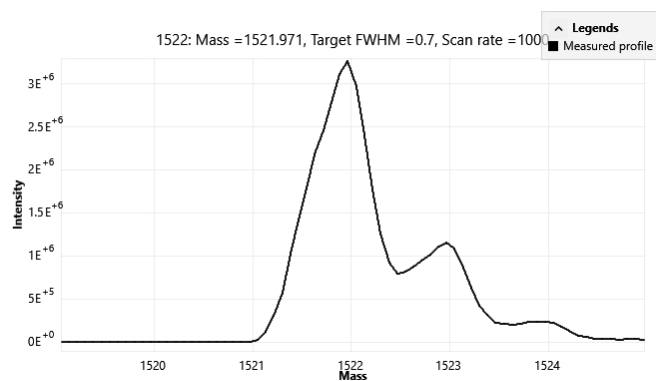
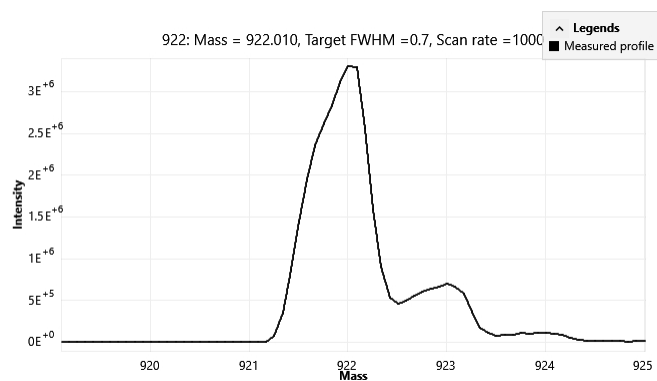
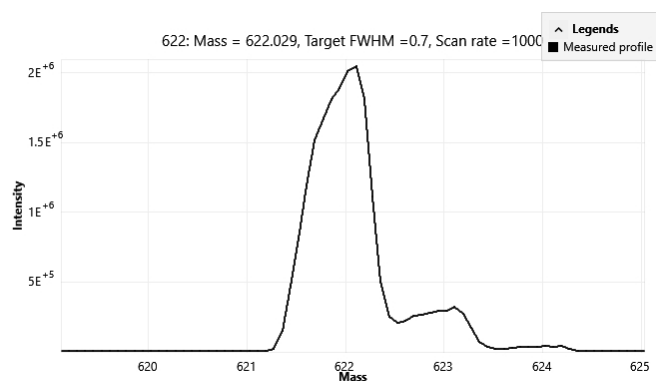
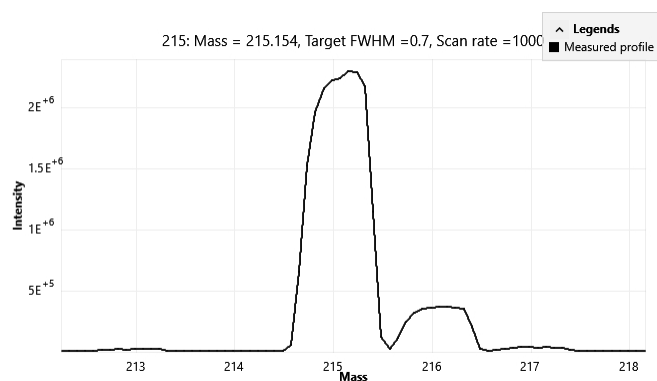
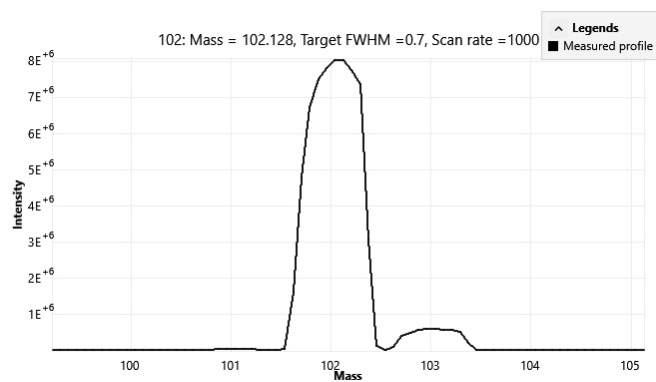
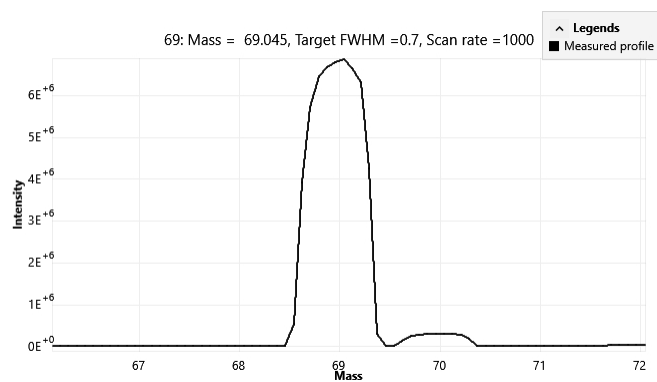
## RESULT PW 0.7 SR 1000

Calibrant	Peak Width (Da.)	Mass Position (Da.)	Result	Comments
69.04	0.69	69.04	Pass	
102.13	0.67	102.13	Pass	
215.15	0.71	215.15	Pass	
622.03	0.72	622.02	Pass	
922.01	0.71	922.00	Pass	
1521.97	0.73	1521.96	Pass	

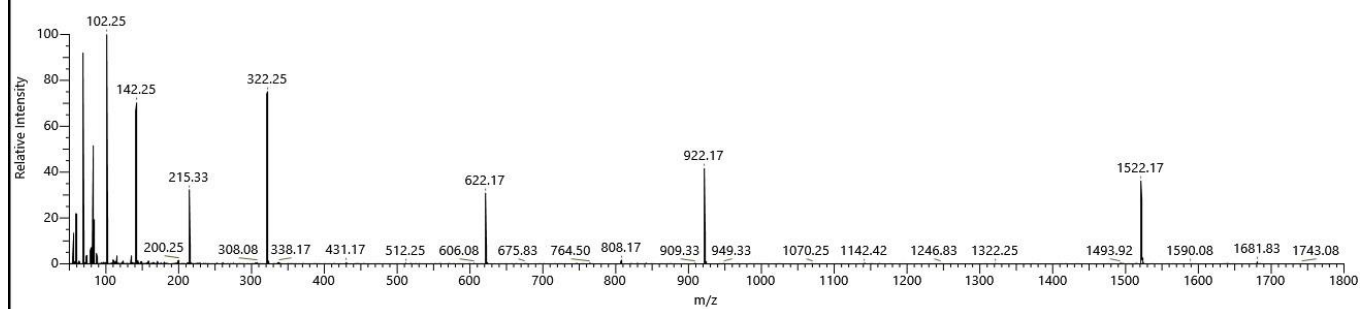
## RESULT PW 1.2 SR 1000

Calibrant	Peak Width (Da.)	Mass Position (Da.)	Result	Comments
69.04	1.19	69.04	Pass	
102.13	1.20	102.12	Pass	
215.15	1.21	215.15	Pass	
622.03	1.19	622.03	Pass	
922.01	1.21	922.00	Pass	
1521.97	1.24	1521.96	Pass	

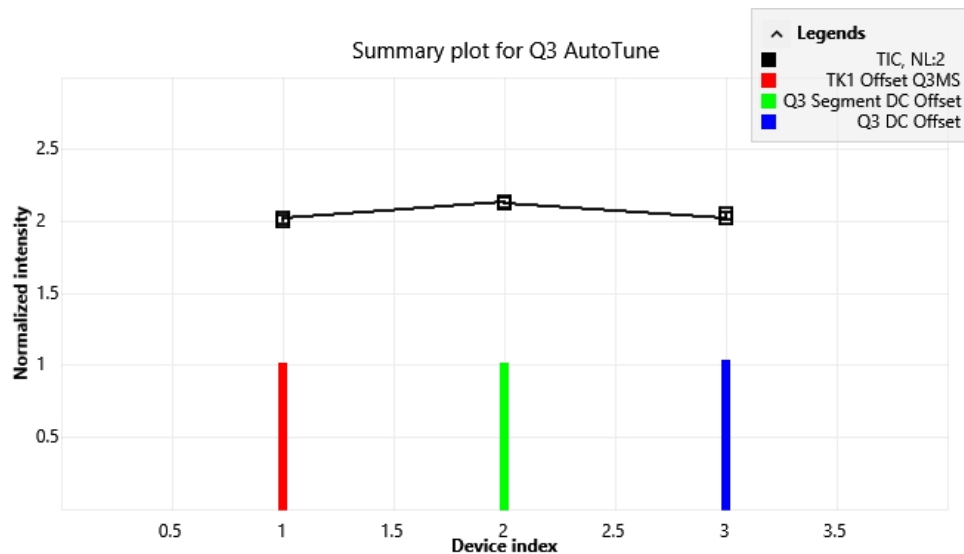
## Q1 Mass Calibration Check Spectra



#89175 RT:155150.43 NL:7.54E+006 + p H-ESI FULL: Q1MS



## Q3 Tune



+Q3MS - Mass 69.04		
Device	Initial Setting	Final Setting
TK1	-2.9	-2.9
Q3_SDC	-5.6	-5.6
Q3_DC	-2.9	-2.9
+Q3MS - Mass 102.13		
Device	Initial Setting	Final Setting
TK1	-2.8	-2.8
Q3_SDC	-5.6	-5.6
Q3_DC	-2.9	-3
+Q3MS - Mass 215.15		
Device	Initial Setting	Final Setting
TK1	-2.8	-2.8
Q3_SDC	-5.8	-5.8
Q3_DC	-3	-3.1
+Q3MS - Mass 622.03		
Device	Initial Setting	Final Setting
TK1	-2.7	-2.7
Q3_SDC	-6.5	-6.5
Q3_DC	-3.4	-3.5
+Q3MS - Mass 922.01		
Device	Initial Setting	Final Setting
TK1	-2.7	-2.7
Q3_SDC	-7	-7
Q3_DC	-3.6	-3.8
+Q3MS - Mass 1521.97		
Device	Initial Setting	Final Setting
TK1	-2.5	-2.5
Q3_SDC	-8	-8
Q3_DC	-4.1	-4.3



# System Calibration Report

## Q3 Mass Calibration Check Results

RESULT PW 0.2 SR 0				
Calibrant	Peak Width (Da.)	Mass Position (Da.)	Result	Comments
69.04	0.21	69.04	Pass	
102.13	0.20	102.13	Pass	
215.15	0.21	215.15	Pass	
622.03	0.20	622.04	Pass	
922.01	0.22	922.03	Pass	
1521.97	0.18	1521.95	Pass	
RESULT PW 0.4 SR 0				
Calibrant	Peak Width (Da.)	Mass Position (Da.)	Result	Comments
69.04	0.40	69.04	Pass	
102.13	0.40	102.12	Pass	
215.15	0.39	215.16	Pass	
622.03	0.39	622.03	Pass	
922.01	0.41	922.00	Pass	
1521.97	0.42	1521.95	Pass	
RESULT PW 0.7 SR 0				
Calibrant	Peak Width (Da.)	Mass Position (Da.)	Result	Comments
69.04	0.71	69.04	Pass	
102.13	0.69	102.13	Pass	
215.15	0.71	215.15	Pass	
622.03	0.69	622.00	Pass	
922.01	0.69	922.01	Pass	
1521.97	0.71	1521.94	Pass	
RESULT PW 0.2 SR 250				
Calibrant	Peak Width (Da.)	Mass Position (Da.)	Result	Comments
69.04	0.21	69.04	Pass	
102.13	0.20	102.13	Pass	
215.15	0.20	215.15	Pass	
622.03	0.21	622.03	Pass	
922.01	0.21	922.01	Pass	
1521.97	0.24	1521.96	Pass	
RESULT PW 0.4 SR 250				
Calibrant	Peak Width (Da.)	Mass Position (Da.)	Result	Comments
69.04	0.41	69.04	Pass	
102.13	0.40	102.13	Pass	
215.15	0.40	215.15	Pass	
622.03	0.40	622.03	Pass	
922.01	0.39	922.01	Pass	
1521.97	0.41	1521.96	Pass	
RESULT PW 0.7 SR 250				
Calibrant	Peak Width (Da.)	Mass Position (Da.)	Result	Comments
69.04	0.68	69.04	Pass	
102.13	0.68	102.13	Pass	
215.15	0.70	215.16	Pass	
622.03	0.69	622.03	Pass	
922.01	0.70	922.01	Pass	
1521.97	0.69	1521.96	Pass	
RESULT PW 1.2 SR 250				
Calibrant	Peak Width (Da.)	Mass Position (Da.)	Result	Comments
69.04	1.19	69.04	Pass	
102.13	1.18	102.13	Pass	
215.15	1.18	215.15	Pass	
622.03	1.21	622.02	Pass	
922.01	1.18	922.01	Pass	
1521.97	1.20	1521.96	Pass	
RESULT PW 0.2 SR 500				
Calibrant	Peak Width (Da.)	Mass Position (Da.)	Result	Comments
69.04	0.21	69.04	Pass	
102.13	0.20	102.13	Pass	
215.15	0.21	215.16	Pass	

Serial Number: EXRTSQ-A-10602

Friday, June 27, 2025 11:06:04 AM

# System Calibration Report

622.03	0.21	622.03	Pass	
922.01	0.24	922.01	Pass	
1521.97	0.23	1521.96	Pass	

## RESULT PW 0.4 SR 500

Calibrant	Peak Width (Da.)	Mass Position (Da.)	Result	Comments
69.04	0.41	69.04	Pass	
102.13	0.40	102.13	Pass	
215.15	0.40	215.15	Pass	
622.03	0.41	622.03	Pass	
922.01	0.39	922.01	Pass	
1521.97	0.41	1521.96	Pass	

## RESULT PW 0.7 SR 500

Calibrant	Peak Width (Da.)	Mass Position (Da.)	Result	Comments
69.04	0.68	69.04	Pass	
102.13	0.69	102.12	Pass	
215.15	0.69	215.15	Pass	
622.03	0.69	622.03	Pass	
922.01	0.71	922.00	Pass	
1521.97	0.69	1521.96	Pass	

## RESULT PW 1.2 SR 500

Calibrant	Peak Width (Da.)	Mass Position (Da.)	Result	Comments
69.04	1.18	69.05	Pass	
102.13	1.19	102.14	Pass	
215.15	1.17	215.16	Pass	
622.03	1.19	622.04	Pass	
922.01	1.20	922.01	Pass	
1521.97	1.20	1521.97	Pass	

## RESULT PW 0.2 SR 1000

Calibrant	Peak Width (Da.)	Mass Position (Da.)	Result	Comments
69.04	0.21	69.04	Pass	
102.13	0.20	102.13	Pass	
215.15	0.22	215.15	Pass	
622.03	0.21	622.03	Pass	
922.01	0.21	922.01	Pass	
1521.97	0.26	1521.97	Pass	

## RESULT PW 0.4 SR 1000

Calibrant	Peak Width (Da.)	Mass Position (Da.)	Result	Comments
69.04	0.42	69.04	Pass	
102.13	0.41	102.12	Pass	
215.15	0.40	215.15	Pass	
622.03	0.41	622.03	Pass	
922.01	0.42	922.01	Pass	
1521.97	0.41	1521.96	Pass	

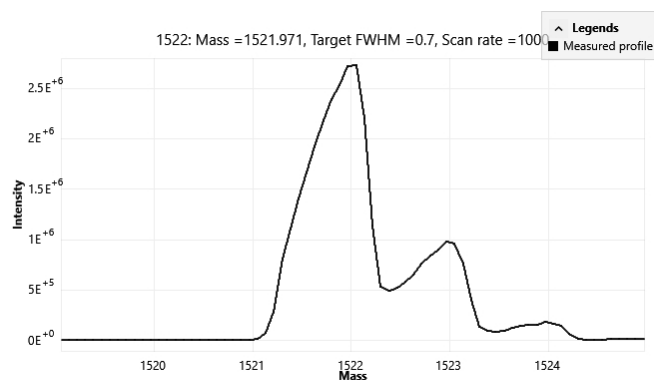
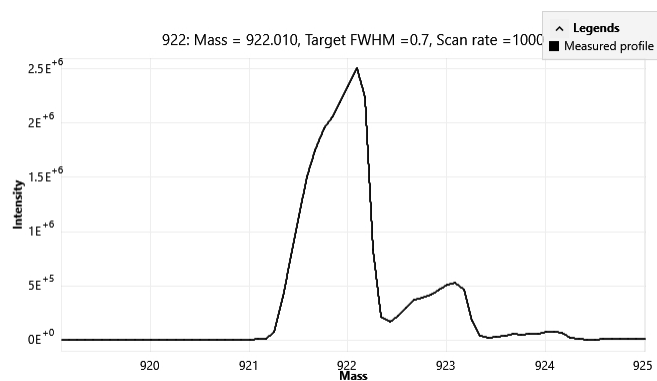
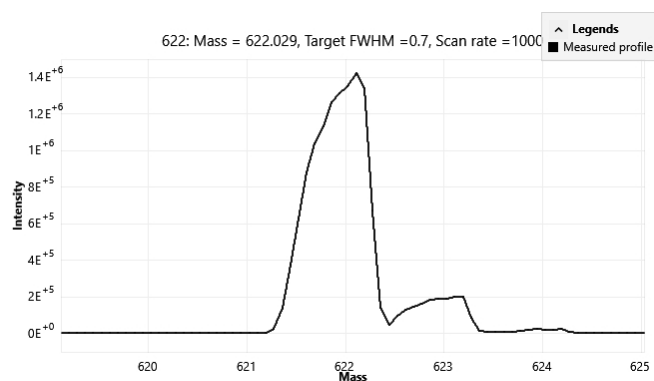
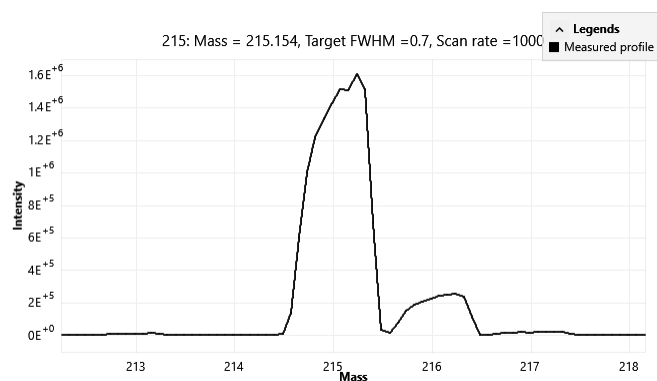
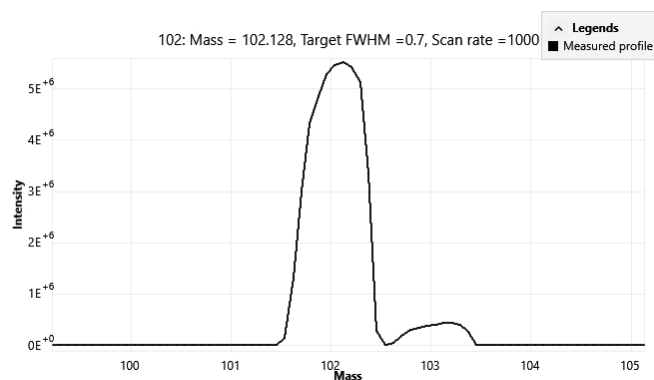
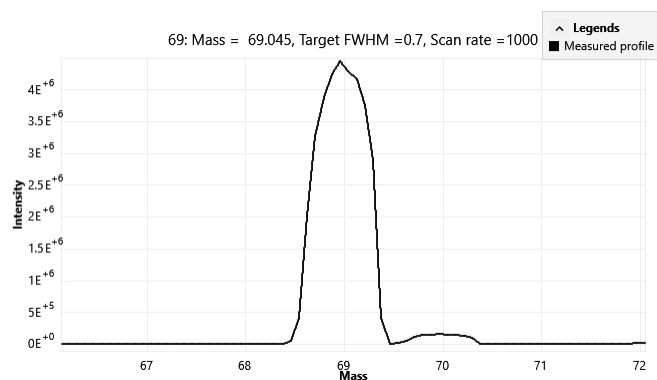
## RESULT PW 0.7 SR 1000

Calibrant	Peak Width (Da.)	Mass Position (Da.)	Result	Comments
69.04	0.68	69.04	Pass	
102.13	0.69	102.13	Pass	
215.15	0.71	215.15	Pass	
622.03	0.74	622.02	Pass	
922.01	0.71	922.00	Pass	
1521.97	0.72	1521.96	Pass	

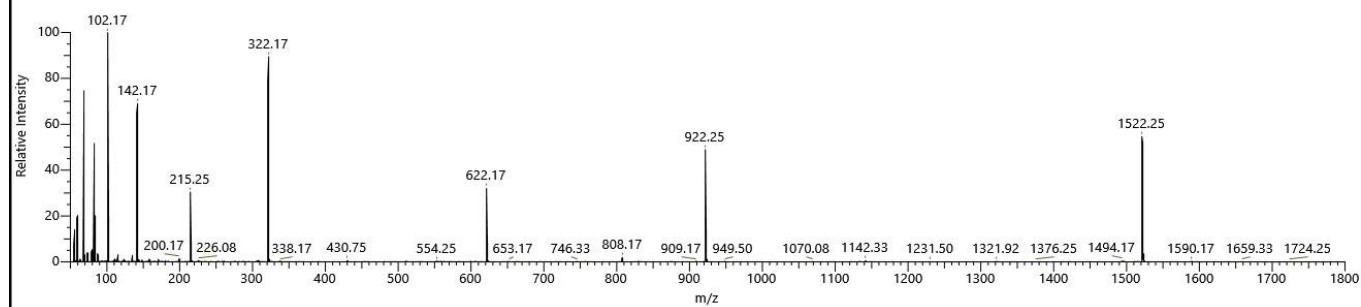
## RESULT PW 1.2 SR 1000

Calibrant	Peak Width (Da.)	Mass Position (Da.)	Result	Comments
69.04	1.18	69.05	Pass	
102.13	1.19	102.13	Pass	
215.15	1.21	215.16	Pass	
622.03	1.22	622.03	Pass	
922.01	1.25	922.00	Pass	
1521.97	1.20	1521.95	Pass	

## Q3 Mass Calibration Check Spectra



#89689 RT:155151.46 NL:5.28E+006 + p H-ESI FULL: Q3MS



Electron Multiplier Calibration	
Coarse Calibration	-1858.033
Previous A	6.967
Previous B	-225.863
Previous EM Full Scan	-1567.128
Previous EM SRM	-1818.354
New A	6.477
New B	-203.604
New EM Full Scan	-1558.459
New EM SRM	-1815.755

