

Willowbrook VFD Sprinkler Trailer – SPU 252

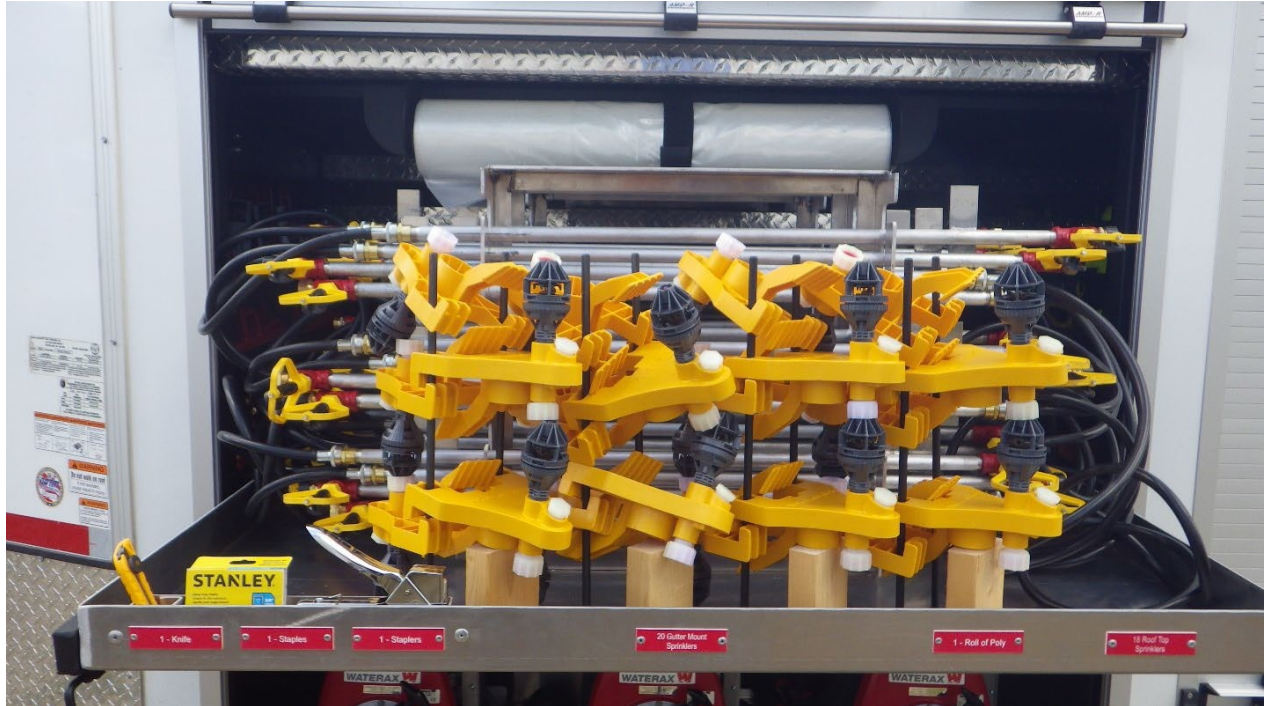
“V Nose”



“V Nose,” Twin 7,000 lb. Axles, 4 Roll-Up Doors, 9 Slide-Out Trays, 12K Pop-Up Jack



Driver's side (left side) front upper



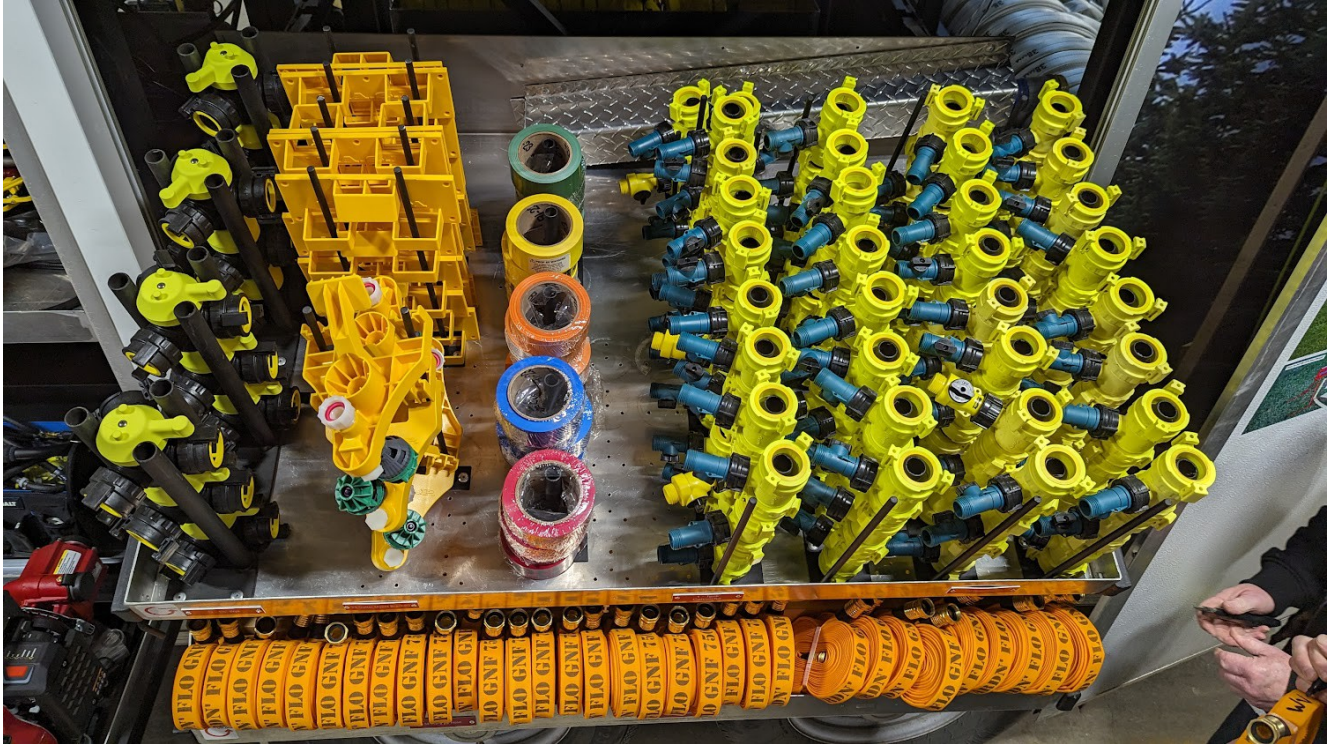
Equipment Quantity	Equipment Description	Check In Quantity	Check Out Quantity
	UPPER TRAY		
25	Gutter Mount Sprinklers		
15	Roof Top Sprinklers		
1	Roll Poly		
1	Knife		

Driver's side (left side) front lower



Equipment Quantity	Equipment Description	Check In Quantity	Check Out Quantity
	LOWER TRAY		
3	Mark 3 Watson Fire Pumps		
3	Pump Kits		
1	Fuel Can		
1	Hydrant Wrenches		

Drivers side (left side) rear upper



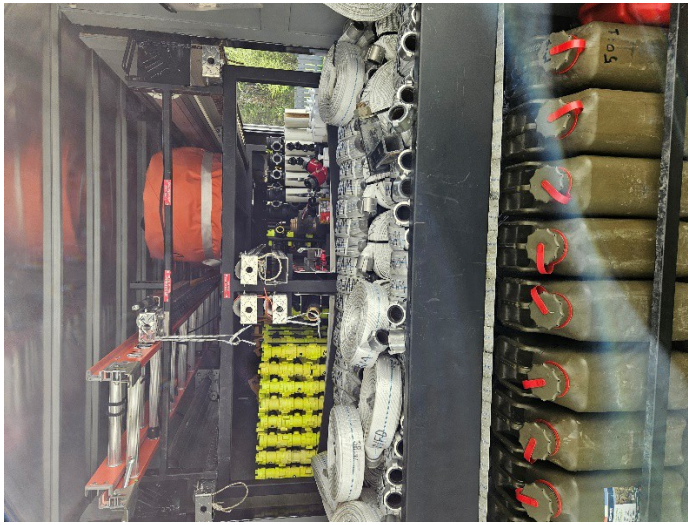
Equipment Quantity	Equipment Description	Check In Quantity	Check Out Quantity
100	Water Thieves		
12	1 ½" Wye		
25	Gutter Mount Brackets		
25	Flagging Tape		

Drivers side (left side) rear lower



Equipment Quantity	Equipment Description	Check In Quantity	Check Out Quantity
32	3/4" GHT x 25' Hose		
90	3/4" GHT x 50' Hose		

Rear of trailer



Equipment Quantity	Equipment Description	Check In Quantity	Check Out Quantity
1	Eye Wash Station		
1	Saline Solution		
1	24' Extension Ladder		
2	Portable Tanks 2,500 Gal. imperial (3000 USG)		
2	Drain valve kit 3" Male to 2" Male assembly with shutoff		
7	2" Hard Suction Hoses c/w Strainers		
25	1 ½" x 100' Hose		
50	1 ½"x50' Hose		
1	Chain Saw Fuel Can		
20	2 ½" X 50' Hose		
1	ABC Fire Extinguisher		
10	Fuel Cans		
1	Cart		
1	Painters Pole		
2	PFD (Life jackets)		
1	First Aid Kit		
1	Portable Tank Connector Hose		

Passenger side (right side) rear upper



Equipment	Equipment Description	Check In	Check Out
15	2 ½" Water Thieves		
1	2 ½" x 1 ½" x 1 ½" Gated Wye		
1	2 ½" Double Male		
1	2 ½" Double Female		
3	2 ½" Male X QC		
2	2 ½" Female X QC		
5	¾" Male X QC		
5	¾" Female X QC		
10	¾" Valves		
25	¾" Wye (Brass)		
18	1 ½" Wyes		
2	Hydrant Gate Valves		
2	Duct Tape		
2	Teflon Tape		
2	Electrical Tape		
12	¾" Gaskets		
10	Instantaneous Fitting Gaskets		
25	¾" Double Female		
2	Portable tank drain valve kit, 3" to 2" w/shutoff		

Passenger side (right side) rear lower



68	3/4" x 25' Hose		
60	3/4" x 50' Hose		

Passenger side (right side) front upper



Equipment Quantity	Equipment Description	Check In Quantity	Check Out Quantity
50	Small ESM Sprinklers		
50	Large ESM Sprinklers		
1	Roll Poly		
1	Knife		

Passenger side (right side) front lower



Equipment Quantity	Equipment Description	Check In Quantity	Check Out Quantity
3	Mark 3 Watson Pumps		
3	Pump Kits		
1	Hydrant Wrenches		

NOSE OF TRAILER



Equipment	Equipment Description	Check In	Check Out
100	Sprinkler Ground Spikes (Red WVFD)		
1	Backpack Fire Extinguisher		
1	Stihl Chain Saw with 20" Bar		
1	Shovel - spade		
2	LED Work Lights		
1	Generator		
1	Ball Hitch		
2	50' Extension Cords		
1	Power bar – external rated		
2	Traffic Cones		
1	Box of Highway Flares		
1	Chainsaw tool Kit (bar wrench, grease gun, spare spark plug, chain filing gauge)		
2	Chainsaw files (chain & raker files)		
1	Chainsaw Chaps		
1	Set Wheel Chalks		
2	Milwaukee Cordless Drills (Case, charger, 2 batteries)		
2	Screw Bit Sets (In Milwaukee boxes)		
1	McLeod Tool		
	CONTINUED ON NEXT PAGE		

[illegible]

Pump Kit Check List

Left
(drivers)
Side

No.	Description	Kit 1		Kit 2		Kit 3	
		In	Out	In	Out	In	Out
1	1 ½ Check Valve						
1	Spark Plug						
1	Fuel Line						
1	Rewind Rope						
1	Wire Mesh for Strainer						
1	1 ½" x 1 ½" x ¾" Water Thief						
1	¾" Brass Nozzle						
1	1 ½" x 10' Pony Hose						
1	Hanson Nozzle						
1	Priming Bucket (Collapsible)						
1	1 ½" Wye						
1	Mark 3 Tool Kit						
1	Suction Hose Spanner						
1	2" Female x Quick Connect Adapter						
1	1 ½" Male x Quick Connect Adapter						
1	1 ½" Female x Quick Connect Adapter						
1	Hose Gasket Set						

Right (Passengers) Side

No.	Description	Kit 4		Kit 5		Kit 6	
		In	Out	In	Out	In	Out
1	1 ½ Check Valve						
1	Spark Plug						
1	Fuel Line						
1	Rewind Rope						
1	Wire Mesh for Strainer						
1	1 ½" x 1 ½" x ¾" Water Thief						
1	¾" Brass Nozzle						
1	1 ½" x 10' Pony Hose						
1	Hanson Nozzle						
1	Priming Bucket (Collapsible)						
1	1 ½" Wye						
1	Mark 3 Tool Kit						
1	Suction Hose Spanner						
1	2" Female x Quick Connect Adapter						
1	1 ½" Male x Quick Connect Adapter						
1	1 ½" Female x Quick Connect Adapter						
1	Hose Gasket Set						

TOOL KIT INVENTORY X 2 (**EACH KIT HAS THE FOLLOWING**)

Equipment	Equipment Description	Check In	Check Out
1	Claw Hammer		
1	Channel lock pliers 10"		
1	Multi driver screwdriver		
1	Crescent Wrench 6"		
1	Crescent Wrench 10"		
1	Pipe Wrench 14"		
4	50 Conduit clamps, 3/8" 2-hole, bag		
1	100' pipe strapping (All round)		
1	Tin Snips 10"		
4	100 – 1 3/4" screws – bag		
4	100 – 2 1/2" screws – bag		
4	50 – 2 1/2" duplex nails - bag		
1	Tool belt – 4 pockets		
1	Pry Bar 18"		
1	Staple gun		
1	Box of staples		

Notes

Mark 3 Watson serial numbers:

-145201

-145202

-145203

-145205

-145211

-145212

--	--

--	--

--	--

--	--

--	--

--	--

1

