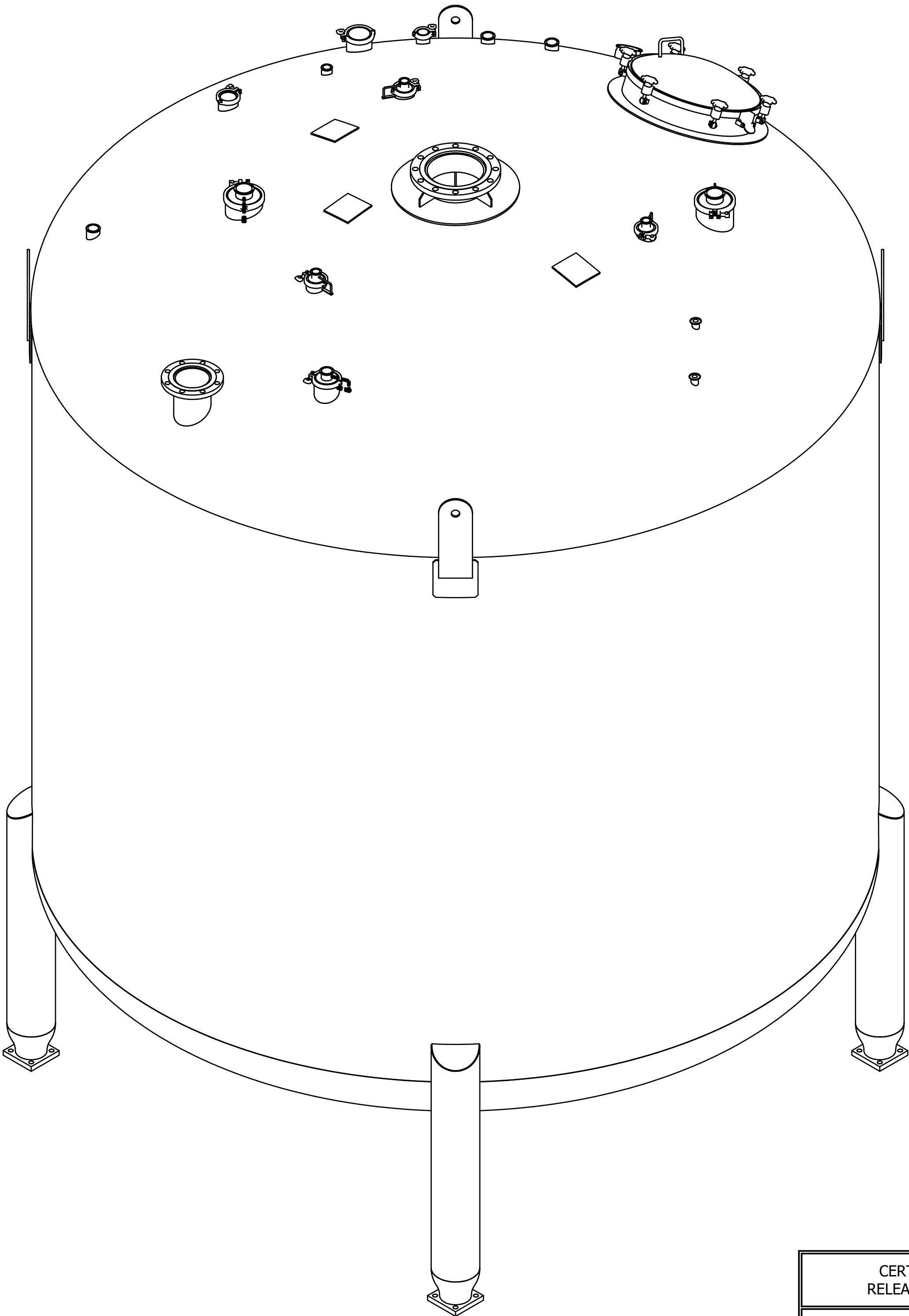


Nzl	SERVICE	ITEM	QTY	PART #	DESCRIPTION	MATERIAL
		1.00	1		SHELL, 10 GA. X 150" I.D. X 114" S.W.	SA240-316/316L
		2.00	1		TOP HEAD, 5/16" PL. ASME F&D X 150" I.D. X 150" D.R. X 10" K.R. X 1" S.F. X 27" F.I.D.	SA240-316/316L
		3.00	1		BOTTOM HEAD, 7 GA. ASME F&D X 150" I.D. X 150" D.R. X 10" K.R. X 1" S.F. X 27" F.I.D.	SA240-316/316L
		4.00	4		LEG, 8" SCH. 40S PIPE X 48 5/16" LG.	SA312-304/304L
		4.01	4		LEG CAP, 10 GA. X 4 7/8" X 8 1/2"	304/304L
		4.02	4		BASEPLATE, 1" PL. X 7" X 7" W/ (4) 7/8" DIA. HOLES	SA240-304/304L
		4.03	4		REDUCER, 8" X 5" SCH. 40S B.W. CONCENTRIC PIPE REDUCER	SA403-304/304L
M1	MANWAY	5.00	1		MANWAY, MC-D2 24", 6 LUG 1/4" THK X 4" LG. COLLAR (PN: 905792C), EPDM GASKET (PN: 905820C) (NON ASME)	316
		5.01	1		REPAD, 1/4" X 2 1/2" WD.	SA240-304/304L
N2	MIXER	6.00	1	FL-14-01000010	10" CLASS 150 ASME B16.5 R.F. SLIP-ON FLANGE	SA182-316/316L
		6.01	1	PI-14-100004010700	10" SCH. 40S PIPE X 7" LG.	SA312-316/316L
		6.02	1		REPAD, 3/8" PL X 6" WIDE	SA240-304/304L
		6.03	4		GUSSET, 1/4" X 2 1/2" X 3 5/8"	SA240-304/304L
N3	WATER INLET	7.00	1		2" TRI-CLAMP FERRULE SFI 14MPW, 4" LG.	SA479-316/316L
N4	ETOH PREMIX	8.00	1		4" TRI-CLAMP FERRULE SFI 14MPW, 6" LG.	SA479-316/316L
		8.01	1		REMOVABLE DIP TUBE ASS'Y.; 2" X .065" WALL TUBE X 144 3/4" LG. W/ 4" MOUNTING PLATE, ANTI-SIPHON HOLE, ALIGNMENT PIN AND BRACKET (ITEM & TAG NO. TO BE ETCHED INTO MOUNT)	316/316L
		8.02	2		DIP PIPE GUIDE, 3" SCH 10S X 4" LG. (SWAGE A/R)	SA312-316/316L
		8.03	4		DIP PIPE GUIDE SUPPORT, 1/4" THK. X 2" WD. X 21 7/16" LG.	SA240-316/316L
N5	SPARE	9.00	1		2" TRI-CLAMP FERRULE SFI 14MPW, 4" LG.	SA479-316/316L
N6	LACTIC ACID	10.00	1	SF-14-40030400	3" TRI-CLAMP FERRULE SFI 14MPW, 4" LG.	SA479-316/316L
		10.01	1		DIP TUBE FOR LACTIC ACID ADDITION (CUSTOMER SUPPLIED)	
N7	Na LACTATE	11.00	1	SF-14-40015400	1 1/2" TRI-CLAMP FERRULE SFI 14MPW, 4" LG.	SA479-316/316L
N8	PRESS TRANS	12.00	1		2" TRI-CLAMP FERRULE SFI 14MPW, 4" LG.	SA479-316/316L
N9	LVL SWITCH	13.00	1		2" TRI-CLAMP FERRULE SFI 14MPW, 4" LG.	SA479-316/316L
N10	NITRO	14.00	1	SF-14-40010400	1" TRI-CLAMP FERRULE SFI 14MPW, 4" LG.	SA479-316/316L
N11	SIGHT GLASS	15.00	1		4" TRI-CLAMP FERRULE SFI 14MPW, 4" LG.	SA479-316/316L
N16	SPRAYBALL	16.00	1		3" TRI-CLAMP FERRULE SFI 14MPW, 4" LG.	SA479-316/316L
		16.01	1		CIP ASSEMBLY, REMOVABLE 1 1/2" TRI-CLAMP CONNECTION W/ 3" MOUNT & (1) REMOVABLE 2 1/2" SPRAYBALL, TOP COVERAGE, 40 GPM @ 25 PSIG RANDOM DRILLED W/ALIGNMENT PIN & BRACKET (STAINLESS SOLUTIONS)	316/316L
		17.00			DELETED	
N20	SPARE	18.00	1		4" TRI-CLAMP FERRULE SFI 14MPW, 6" LG.	SA479-316/316L
N17	SPRAYBALL	19.00	1	SF-14-40030400	3" TRI-CLAMP FERRULE SFI 14MPW, 4" LG.	SA479-316/316L
		19.01	1		CIP ASSEMBLY, REMOVABLE 1 1/2" TRI-CLAMP CONNECTION W/ 3" MOUNT & (1) REMOVABLE 2 1/2" SPRAYBALL, TOP COVERAGE, 40 GPM @ 25 PSIG RANDOM DRILLED W/ALIGNMENT PIN & BRACKET (STAINLESS SOLUTIONS)	316/316L
N14	SAMPLE	20.00	1		1" TRI-CLAMP FERRULE SFI 14MPW, 4" LG.	SA479-316/316L
N15	THERMO	21.00	1		THERMOWELL, 1 1/2" X 7 1/2" STM X 6" INS X .260" BORE (LAG INC) 1 1/2"-260WELD-IN-U6	316/316L
N12	ALCOHOL ADD	22.00	1		6" TRI-CLAMP FERRULE SFI 14MPW, 6" LG.	SA312-316/316L
		22.01	1		REMOVABLE DIP TUBE ASS'Y.; 2" X .065" WALL TUBE X 151 1/2" LG. W/ 4" MOUNTING PLATE, ANTI-SIPHON HOLE, ALIGNMENT PIN AND BRACKET (ITEM & TAG NO. TO BE ETCHED INTO MOUNT)	316/316L
		22.02	2		DIP PIPE GUIDE, 3" SCH 10S X 4" LG. (SWAGE A/R)	SA312-316/316L
		22.03	4		DIP PIPE GUIDE SUPPORT, 1/4" THK. X 2" WD. X 29 13/16" LG.	SA240-316/316L
N18	OUTLET	23.00	1		OUTLET, 3" ANGLE STEM OUTLET BALL VALVE W/ HYGENIC CONNECTION (PBM) (CUSTOMER SUPPLIED)	316/316L
		23.01	1	IN-VTX-003	VORTEX BREAKER, DISH STYLE FOR 4" OUTLET	316/316L
N13	PVV	24.00	1	FL-14-00600010	6" CLASS 150 ASME B16.5 R.F. SLIP-ON FLANGE	SA182-316/316L
		24.01	1	PI-14-060004011100	6" SCH. 40S PIPE X 11" LG.	SA312-316/316L
		25.00	4		BAFFLE, 1/4" PL X 12" X 107"	SA240-316/316L
		25.01	20		BAFFLE ROD, 5/8" DIA R.B. X 18 1/16" LG	SA479-316/316L
		26.00	1	SF-14-10020001	2" TRI-CLAMP FERRULE CAP, 16AMP	316L
		26.01	1	SF-82-FE020000	2" TRI-CLAMP FERRULE GASKET	BLACK EPDM
		26.02	1		2" 13MHMM FERRULE CLAMP	304
		27.00	1	SF-14-10040001	4" TRI-CLAMP FERRULE CAP, 16AMP	316L
		27.01	2	SF-82-FE040000	4" TRI-CLAMP FERRULE GASKET	BLACK EPDM
		27.02	2	SF-11-20040001	4" 13MHMM FERRULE CLAMP	304
		28.00	4	SF-82-FE030000	3" TRI-CLAMP FERRULE GASKET	BLACK EPDM
		28.01	4	SF-11-20030001	3" 13MHMM FERRULE CLAMP	304
		29.00	2	SF-82-FE060000	6" TRI-CLAMP FERRULE GASKET	BLACK EPDM
		29.01	2	SF-11-20060001	6" 13MHMM FERRULE CLAMP	304
		30.00	1		DATA PLATE, STD. SFI DATA PLATE	316/316L
		30.01	1		NAME PLATE, STD. SFI SHOP NAME PLATE	316/316L
		31.00	4	LL-12-10000055	LIFTING LUG EAR STYLE, 3/8" PL X 6" X 17" LG WITH 1/4" X 8" X 8" REPAD (REF DWG NO. EX-LLG-006)	304/304L
N21	SPRAYBALL	32.00	1		3" TRI-CLAMP FERRULE SFI 14MPW, 4" LG.	SA479-316/316L
		32.01	1		CIP ASSEMBLY, REMOVABLE 1 1/2" TRI-CLAMP CONNECTION W/ 3" MOUNT & (1) REMOVABLE 2 1/2" SPRAYBALL, TOP COVERAGE, 40 GPM @ 25 PSIG RANDOM DRILLED W/ALIGNMENT PIN & BRACKET (STAINLESS SOLUTIONS)	316/316L
N22	RECIRC	33.00	1		6" TRI-CLAMP FERRULE SFI 14MPW, 4" LG.	SA312-316/316L
		33.01	1		REMOVABLE DIP TUBE ASS'Y.; 3" X .065" WALL TUBE X 155 3/16" LG. W/ 4" MOUNTING PLATE, ANTI-SIPHON HOLE, ALIGNMENT PIN AND BRACKET (ITEM & TAG NO. TO BE ETCHED INTO MOUNT)	316/316L
		33.02	2		DIP PIPE GUIDE, 3" SCH 10S X 4" LG. (SWAGE A/R)	SA312-316/316L
		33.03	4		DIP TUBE GUIDE SUPPORT, 1/4" THK. X 2" WD. X 38 3/8" LG.	SA240-316/316L
N23	PILOT SENSING LINE	34.00	1		1" TRI-CLAMP FERRULE SFI 14MPW, 4" LG.	SA479-316/316L
		35.00	3		PIPE SUPPORT PAD, 1/4" X 6" X 6"	SA240-304/304L

△

△

△



CERTIFIED CORRECT AND  
RELEASED FOR FABRICATION

FABRICATION WILL BE IN ACCORDANCE WITH THIS DRAWING. ANY FURTHER  
CHANGES WILL BE REVIEWED FOR COST AND DELIVERY ADJUSTMENTS.

STAINLESS FABRICATION INCORPORATED

B	LEGS (ITEM 4.00) WERE 48 7/8" LG., MANWAY (ITEM 5.00) WAS 6" LG. COLLAR, N4 (ITEM 8.00) WAS 4" LG.; WEIGHT WAS 6675 LBS.	DS	SW	JB	10/30/2020
A	ITEM 4.00 WAS 61 1/8" LG.; ITEM 4.02 WAS STANDARD BASEPLATE DESIGN, ADDED ITEM 4.03, M1 (ITEM 5.00) GASKET MATERIAL WAS SILICONE, ADDED ITEM 5.01, ITEM 8.01 WAS 21 1/4" LG., ADDED ITEMS 8.02 & 8.03, N5 (ITEM 9.00) WAS SERVICE "WATER PREMIX", N16 (ITEM 16.00) WAS 2", ADDED ITEM 16.01, ITEM 17.00 WAS 2" TRI-CLAMP FERRULE, N17 (ITEM 19.00) WAS 2", ADDED ITEM 19.01, ITEM 21.00 WAS 4" INSERTION, ITEM 22.01 WAS 26 1/2" LG., ADDED ITEM 22.02 & 22.03, ITEMS 27.01 & 27.02 WERE QTY. 2, ITEM 28.00 THRU 29.01 WERE QTY. 1; ADDED ITEMS 32.00 THRU 35.00; WEIGHT WAS 6712 LBMASS; QTY. WAS (4) FOUR; RELEASED FOR FABRICATION.	DS	SW	JB	10/1/2020
REV	DESCRIPTION	DESIGNER	CHECKED BY	ENGINEER	DATE

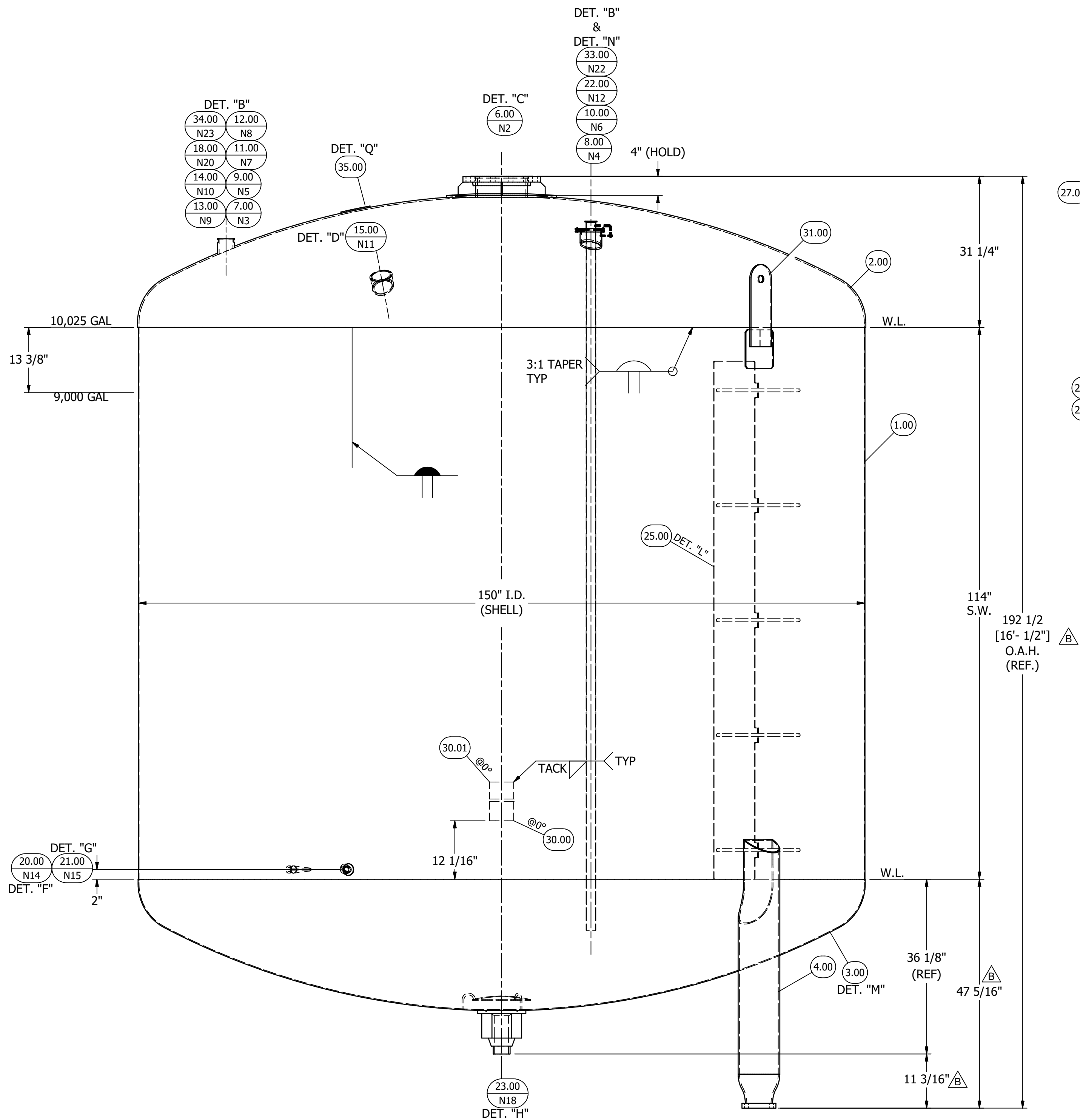
GENERAL NOTES & SPECIFICATIONS
1. Flange Bolt Holes To Straddle Major Vertical & Horizontal Vessel Center Lines Unless Indicated Otherwise. 2. The Corrosion Resistance Of The Equipment Is Not The Responsibility Of Stainless Fabrication, Inc. 3. Suitable Pressure and/or Vacuum Relief Valve(s) Must Be Installed By Customer For Vessel and/or Heat Transfer Surface Operation. 4. Design (Except Manway) & Tolerances Are In Accordance With The Latest Edition Of The "ASME" Boiler & Pressure Vessel Code, Section VIII, Division 1, 2019 Edition 5. Production To Provide Protection For All Nozzles & Fittings Prior To Shipment. Vessel Must Be Adequately Vented. 6. Weld Seams In Vessel Head & Shell Shall Be Located Where Possible To Avoid Nozzles, Access Openings, & Reinf. Pads. 7. All Reinforcement Pads Must Be Provided With (1) 1/8" Dia. Weephole, Located At Lowest Point When Vessel Is In Its Normal Operating Position. If No Leg Weld Pad Is Required, Drill (1) 3/16" Dia. Weephole In Lowest Point Of Pipe Leg 8. Welding Procedures Per Section IX, Asme Boiler & Pressure Vessel Code. Stainless To Stainless 0808PAW21-1, 0808PAW21-1a, 0808GT21-6, 0808GT16-2, 0808GM31-1, 0808GM33-1, 0808FC31-1 Carbon To Stainless (If Applicable) 0108GT16-2, 0108FC31-1 0108GM31-1 0108GM33-1 Carbon To Carbon (If Applicable) 0101GT16-2, 0101GM31-1, 0101FC31-1 9. Minimum Design Metal Temperature: -20° F 10. H.T.S. Nozzles Are Non-Load Bearing, If Applicable. 11. The Data Plate Shall Include The Customer Purchase Order Number and Tank Tag Number If Listed On This Drawing. 12. Unless Otherwise Specified, The Shop Is To Locate Lifting Lugs On Tank Such That Lugs Are At 3 O'clock And 9 O'clock As It Ships. Spreader Beams Required.
ADDITIONAL NOTES & SPECIFICATIONS
13. The Following Standard Procedures & Specifications Are To Be Used: QC-100 Hydrostatic Testing QC-200 Liquid Penetrant Examination (Color Contrast Method) (AS APPLICABLE) QC-201 Liquid Penetrant Examination (Flourescent Contrast) (AS APPLICABLE) QC-600 Cleaning Of Stainless Steel Parts And Equipment QC-601 Passivation Procedure For 300 Series Stainless Steel QC-800 Standard Dimensional & Fabrication Tolerances Specification 14. Agitator Loads: Vertical Downward = 2,850 lbf Torque = 30,000 in-lb Bending Moment = 15,750 in-lb 15. SEISMIC DESIGN FOR WINFIELD, KS ASCE 7-10, Ss = .108. S1 = .057

SERIAL NUMBER TABLE				
SERIAL #	TANK TAG #	AGITATOR TAG #	C.I.P. TAG #	DIPTUBE TAG#
13587-1	T-211	A-211	S-211.E S-211.F	D-211.D D-211.G D-211.H
13587-2	T-216	A-216	S-216.E S-216.F	D-216.D D-216.G D-216.H

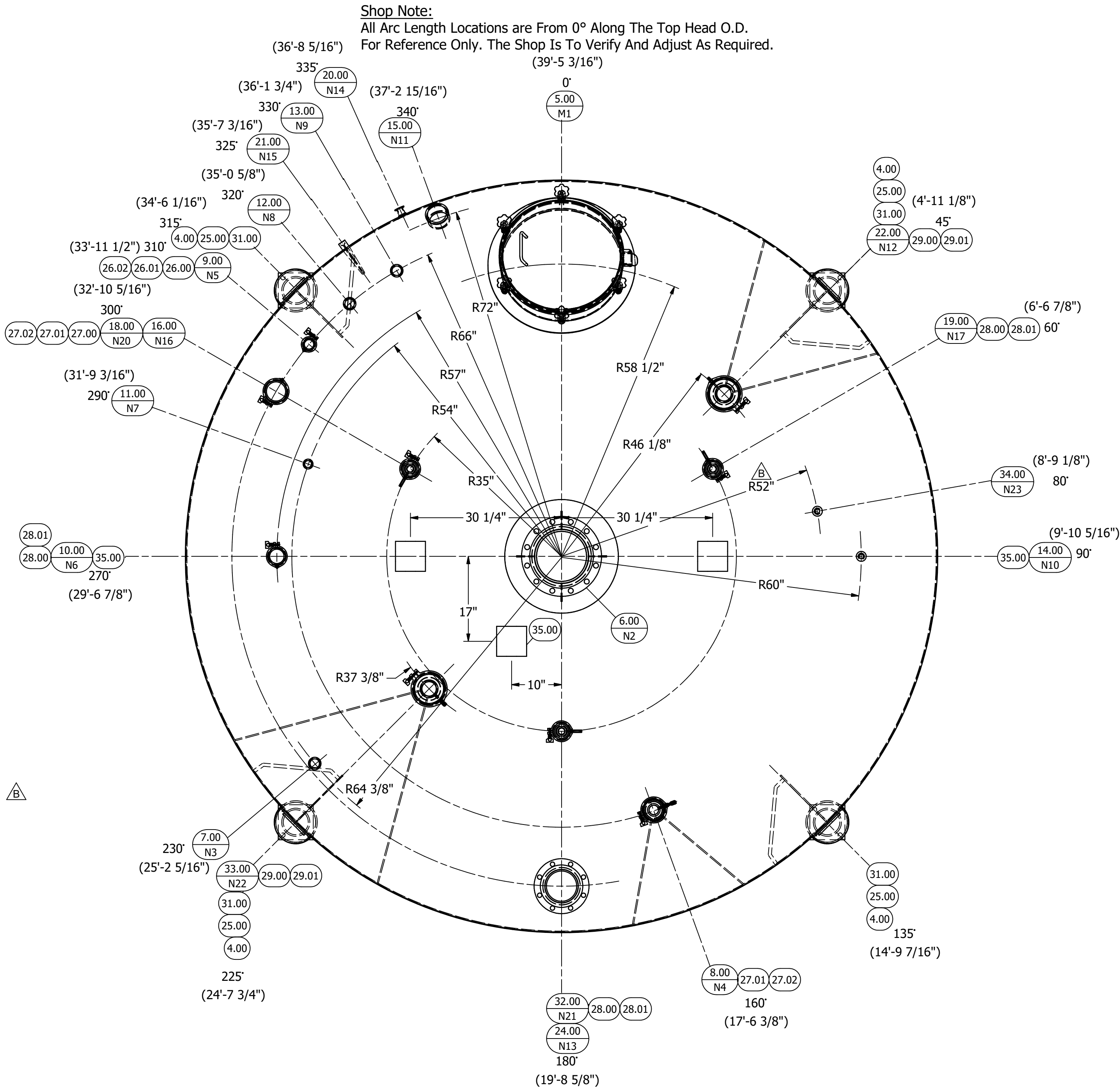
**M.T.R.'S REQUIRED**  
(APPLIES TO ALL WETTED PARTS)

SPECIFICATIONS		VESSEL	HEAT TRANSFER SURFACE	DRAWN	JONATHAN JONES		DATE	9/1/2020		
ASME Code, Sec. VIII, div. 1.		NOTE 4		CHECKER	DANIEL STAUFFER		DATE	9/4/2020		
Inspection & Stamped		NO		ENGINEER	JEFF BRUNSON		DATE	9/4/2020		
Max. Design Temp. °F		225		TITLE  9,000 GAL SANITIZER MIX  TANK   TAG NO. T-211, T-216  SHEET 1 OF 4						
Max. Design Pressure, PSIG		5								
Corrosion Allowance, Inch		0								
Specific Gravity		1.0								
Hydrostatic Test, PSIG		7								
Vacuum Design, PSIG		.5								
Radiograph		NONE								
HEAT TRANSFER SURFACE N/A				QUANTITY	(2) TWO		EST. EMPTY WEIGHT	6659 lbmass		
MATERIAL FINISH				CUSTOMER	EPIC SYSTEMS GROUP LLC					
INTERIOR 30Ra		EXTERIOR 2B/Mill		ADDRESS	4142 MERAMEC BOTTOM ROAD ST. LOUIS, MO 63129					
WELD FINISH				SHIP TO	ST. LOUIS, MO 63129					
INTERIOR 30Ra		EXTERIOR BF		CUSTOMER ORDER NO:	55341					
PAINT NONE				This Drawing Is The Property Of Stainless Fabrication, Inc. Do Not Print, Photograph, Copy, Or Use For Any Purpose Other Than That For Which It Is Specifically Furnished						
CHECKED BY										
ENGINEERED BY										
RESERVED				DRAWING NO.  13587-1-M1						
				REV B						

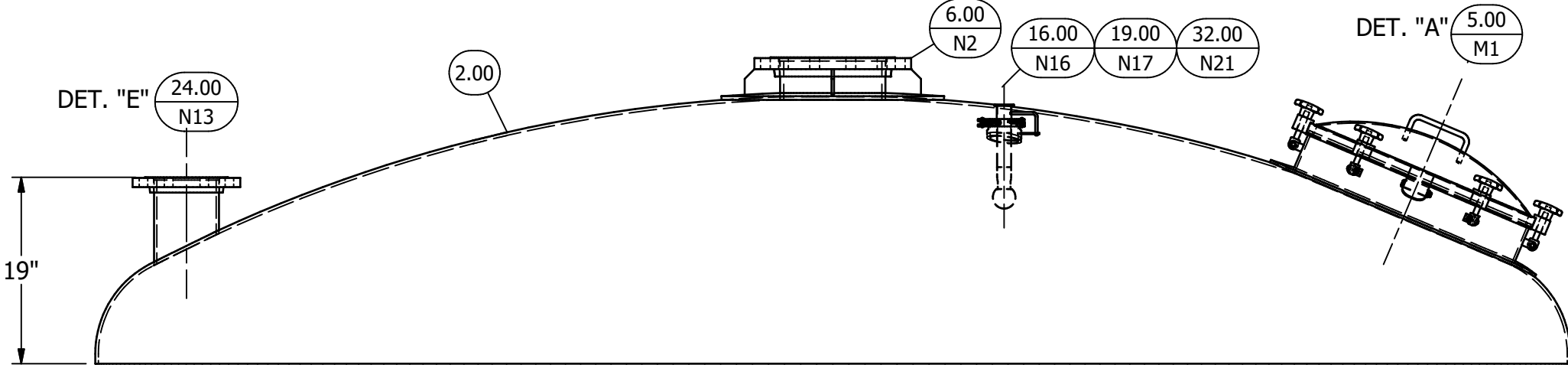




**ELEVATION VIEW**  
(SEE PLAN VIEW FOR TRUE ORIENTATION)



**PLAN VIEW**



**AUXILIARY VIEW**

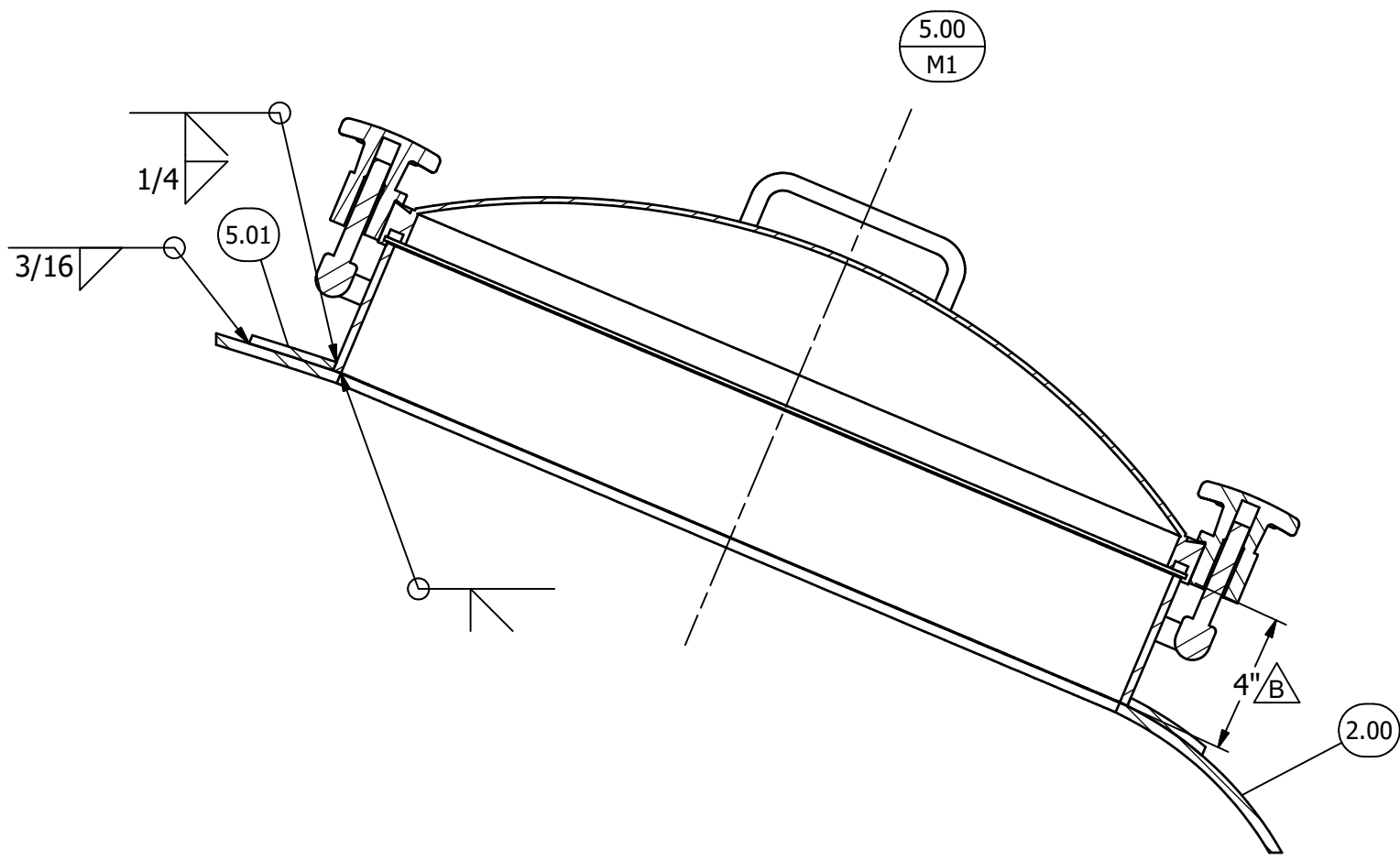
CERTIFIED CORRECT AND  
RELEASED FOR FABRICATION

FABRICATION WILL BE IN ACCORDANCE WITH THIS DRAWING. ANY FURTHER  
CHANGES WILL BE REVIEWED FOR COST AND DELIVERY ADJUSTMENTS.

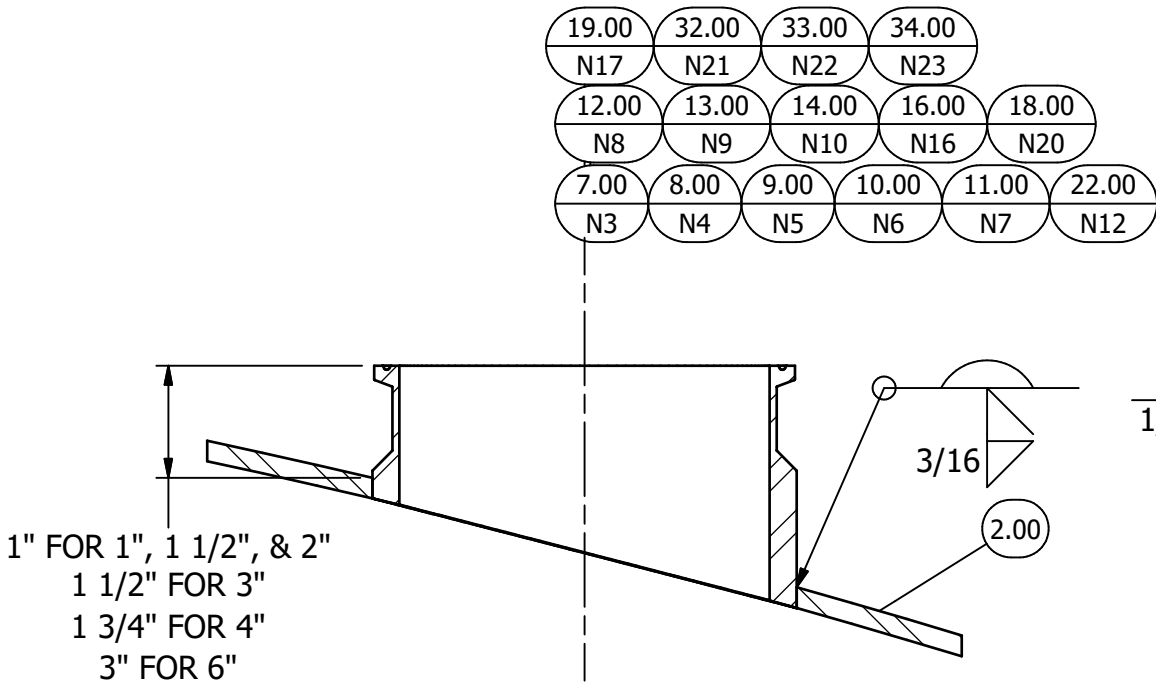
STAINLESS FABRICATION INCORPORATED

B	UPDATED ELEVATION VIEW, N23 (ITEM 34.00) WAS ON 58" RADIUS, OUTLET HEIGHT 11 3/4"	DS	SW	JB	10/30/2020
A	ADDED ITEMS 32.00 THRU 35.00 TO ELEVATION, PLAN & AUXILIARY VIEW; OUTLET HEIGHT WAS 18"; N14 (ITEM 20.00) WAS 30" FROM UPPER W.L., N15 (ITEM 21.00) WAS 6" TO LOWER W.L.; NOZZLE ORIENTATION AND LOCATION UPDATED PER CUSTOMER MARKS; N16 & N17 MOVED TO AUXILIARY VIEW; RELEASED FOR FABRICATION.	DS	SW	JB	10/1/2020
REV	DESCRIPTION	DESIGNER	CHECKED BY	ENGINEER	DATE

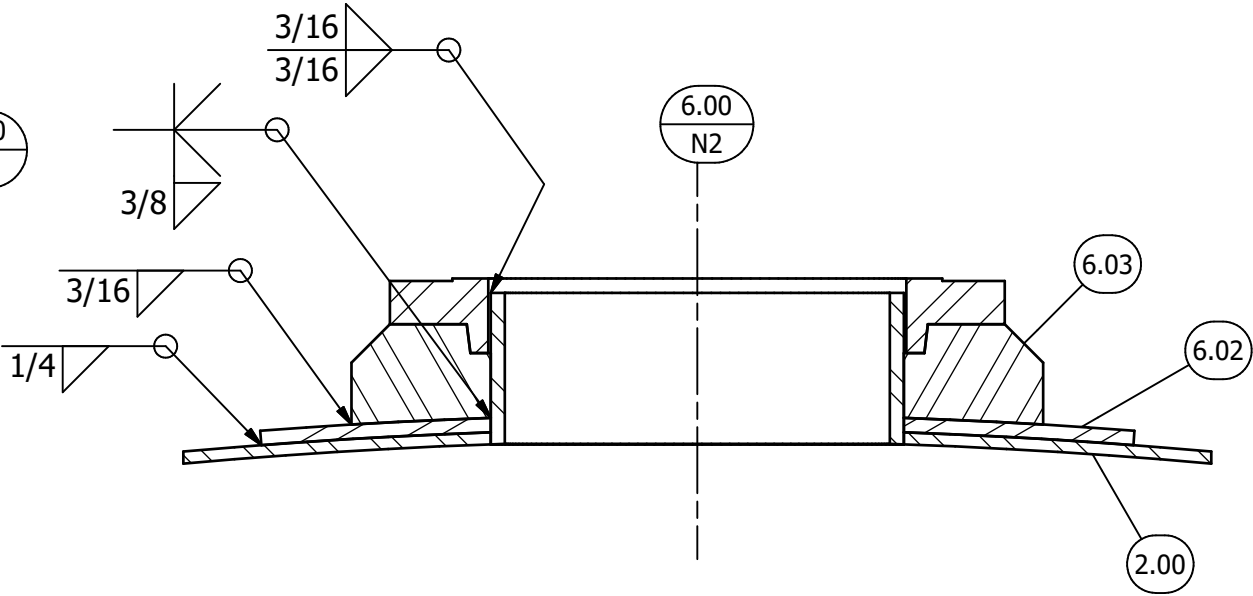
DRAWN	JONATHAN JONES	DATE	9/1/2020
CHECKED	DANIEL STAUFFER	DATE	9/4/2020
DES. ENGR. APPROVED	JEFF BRUNSON	DATE	9/4/2020
ELEVATION & PLAN SHEET 2 OF 4			
This Drawing Is The Property Of Stainless Fabrication, Inc. Do Not Print, Photograph, Copy, Or Use For Any Purpose Other Than That For Which It Is Specifically Furnished			
Stainless Fabrication, Incorporated 4455 W. Kearney Springfield, MO 65803 (417) 865-5696			
CHECKED BY	APPROVED jeff.brunson - 11/20/2020 10:29:58 AM		
ENGINEERED BY	APPROVED jeff.brunson - 11/20/2020 10:34:58 AM		
DRAWING NO. 13587-1-M2			
REVISION B			



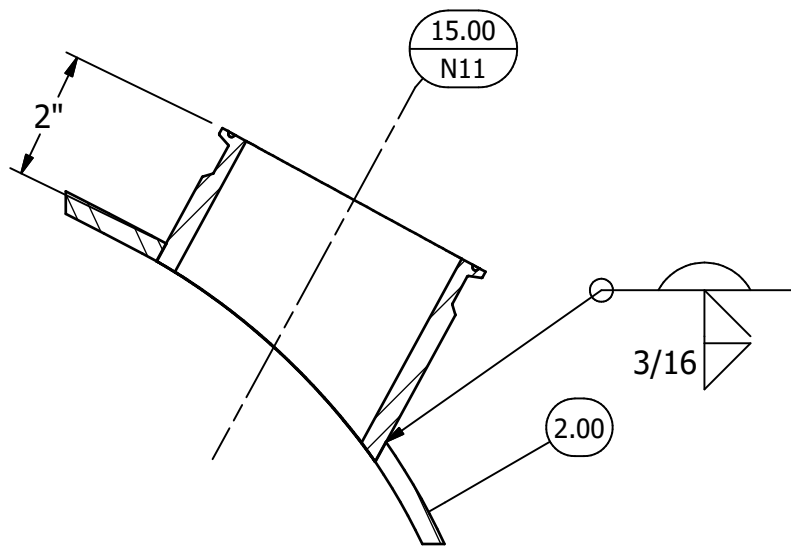
**DETAIL "A"**  
(MANWAY)



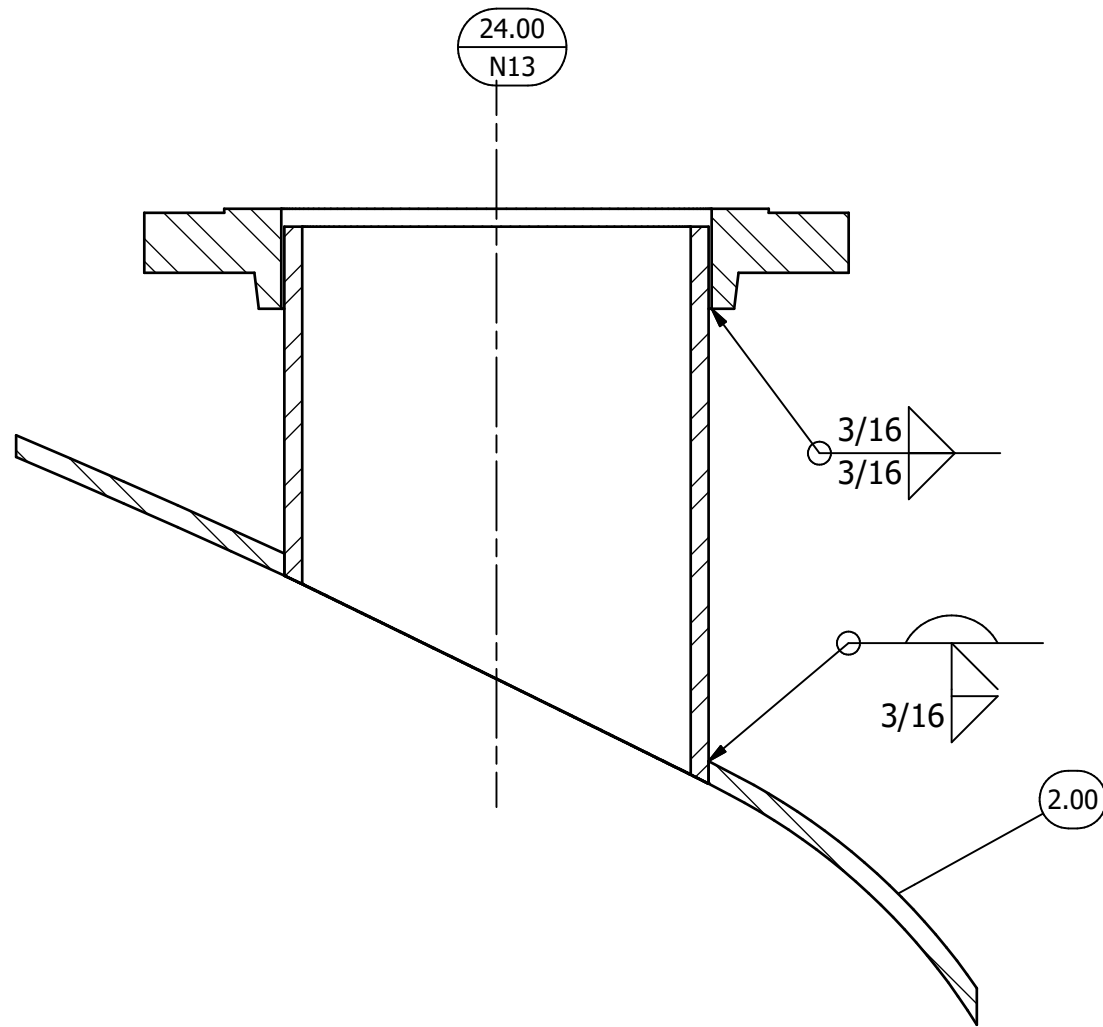
**DETAIL "B"**  
(TOP HEAD FERRULES)



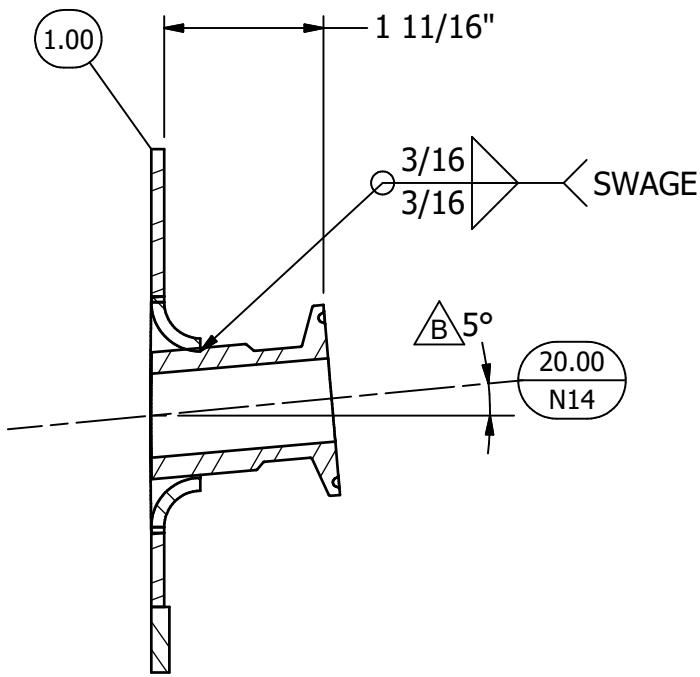
**DETAIL "C"**  
(MIXER MOUNT)



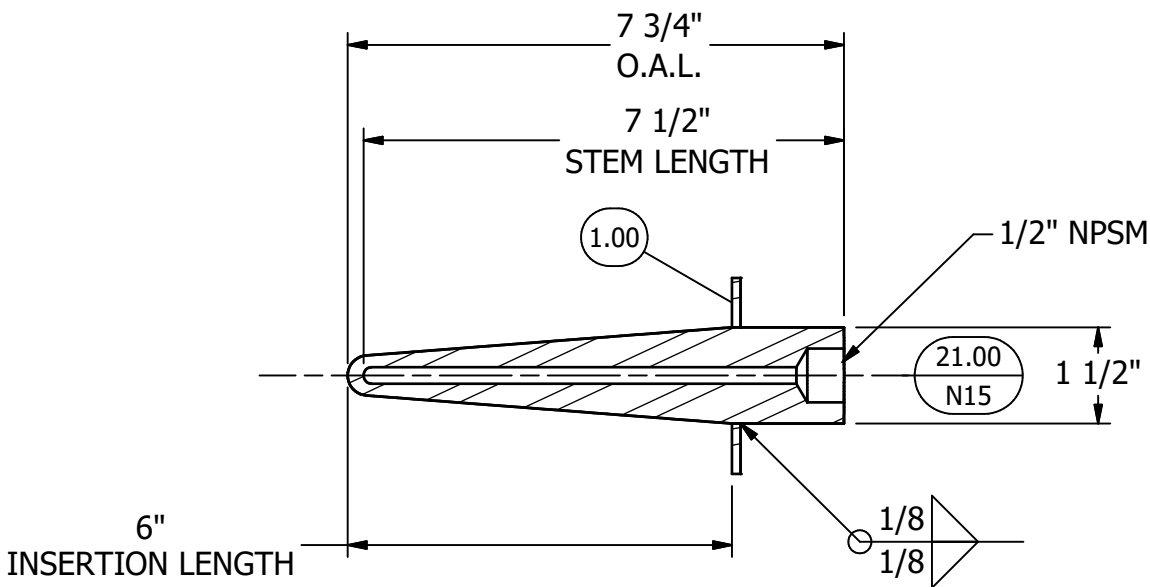
**DETAIL "D"**  
(SIGHT GLASS)



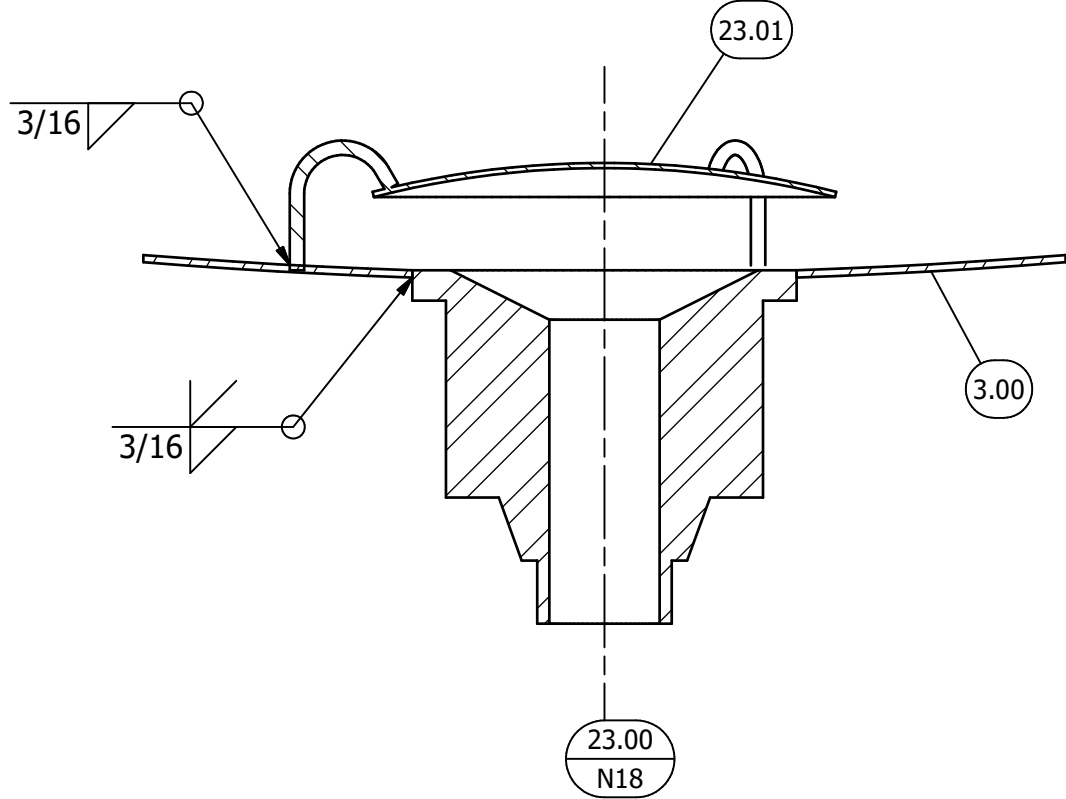
**DETAIL "E"**  
(TOP HEAD RFSO)



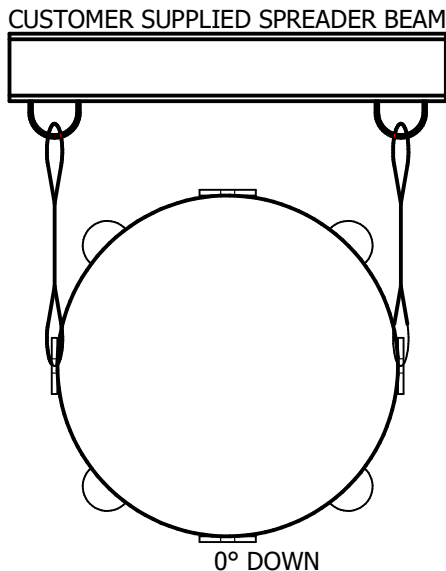
**DETAIL "F"**  
(SIDEWALL CONNECTION)



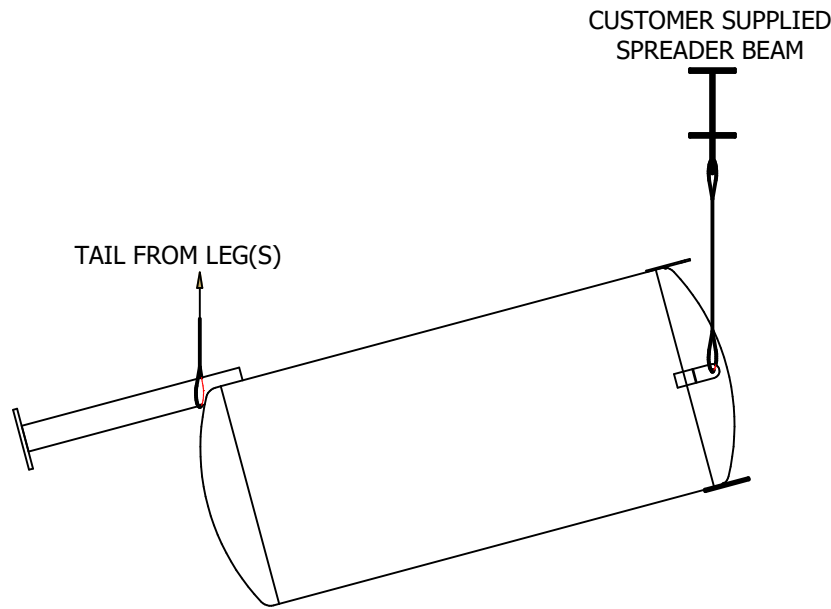
**DETAIL "G"**  
(THERMOWELL)



**DETAIL "H"**  
(OUTLET)



**LIFTING END VIEW**  
(SPREADER BEAM USING TWO LUGS)



**LIFTING ELEVATION**  
(SPREADER BEAM & TAILING FROM LEG(S))

CERTIFIED CORRECT AND  
RELEASED FOR FABRICATION

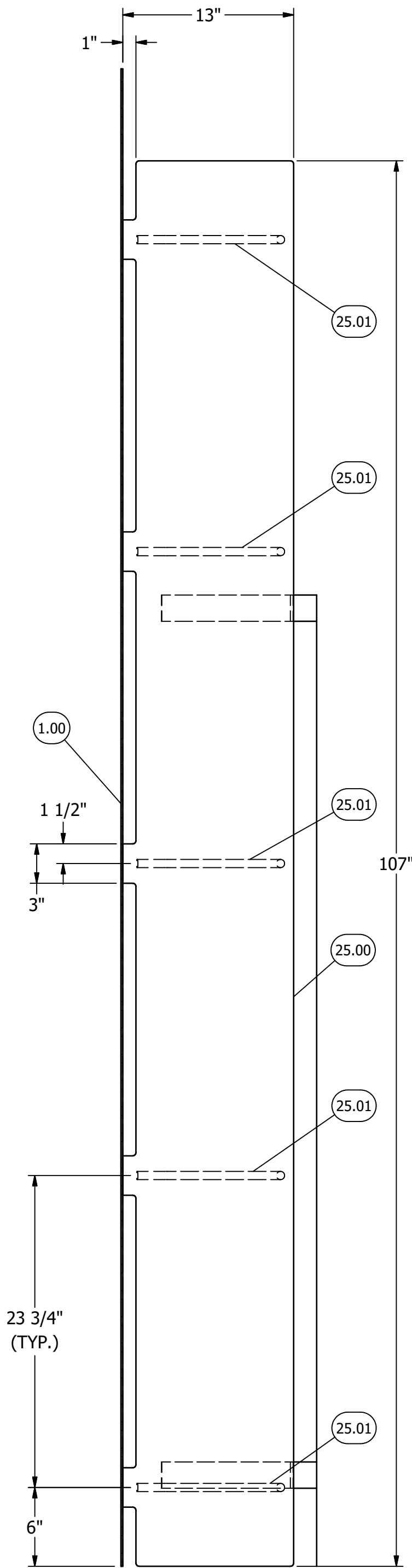
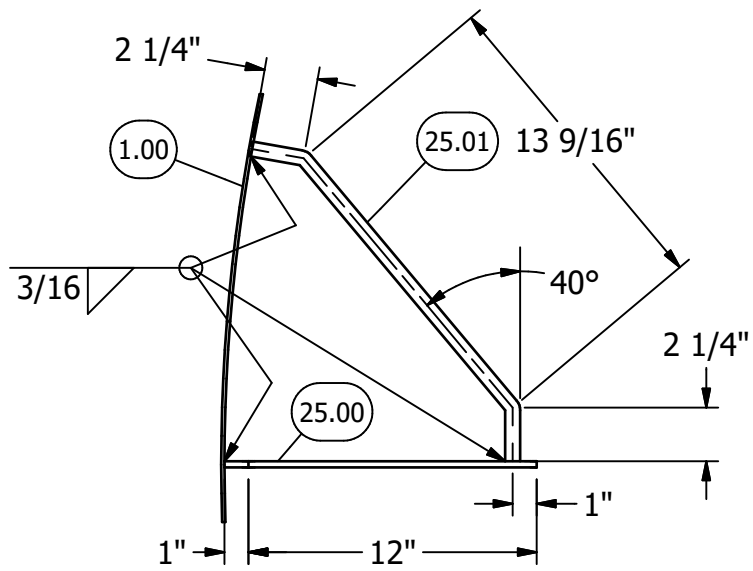
FABRICATION WILL BE IN ACCORDANCE WITH THIS DRAWING. ANY FURTHER  
CHANGES WILL BE REVIEWED FOR COST AND DELIVERY ADJUSTMENTS.

STAINLESS FABRICATION INCORPORATED

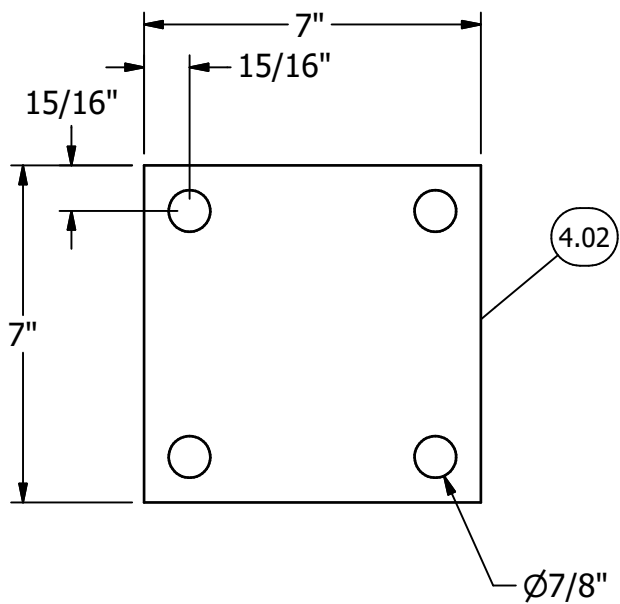
B	IN DETAIL "A": PROJECTION WAS 6".	DS	SW	JB	10/30/2020
A	ADDED 5.01 TO DETAIL "A"; ADDED ITEMS 32.00 THRU 34.00 TO DETAIL "B"; UPDATED DETAIL "F" AND "G"; RELEASED FOR FABRICATION.	DS	SW	JB	10/1/2020
REV	DESCRIPTION	DESIGNER	CHECKED BY	ENGINEER	DATE

DRAWN	JONATHAN JONES	DATE	9/1/2020
CHECKED	DANIEL STAUFFER	DATE	9/4/2020
DES. ENGR. APPROVED	JEFF BRUNSON	DATE	9/4/2020
DETAILS SHEET 3 OF 4			
This Drawing Is The Property Of Stainless Fabrication, Inc. Do Not Print, Photograph, Copy, Or Use For Any Purpose Other Than That For Which It Is Specifically Furnished			
<b>Stainless Fabrication, Incorporated</b> 4455 W. Kearney Springfield, MO 65803 (417) 865-5696			
CHECKED BY			
APPROVED scott.wallace - 11/3/2020 10:28:30 AM			
ENGINEERED BY			
APPROVED jeff.brunson - 11/3/2020 10:34:53 AM			
DRAWING NO.	13587-1-D3		
	REVISION		

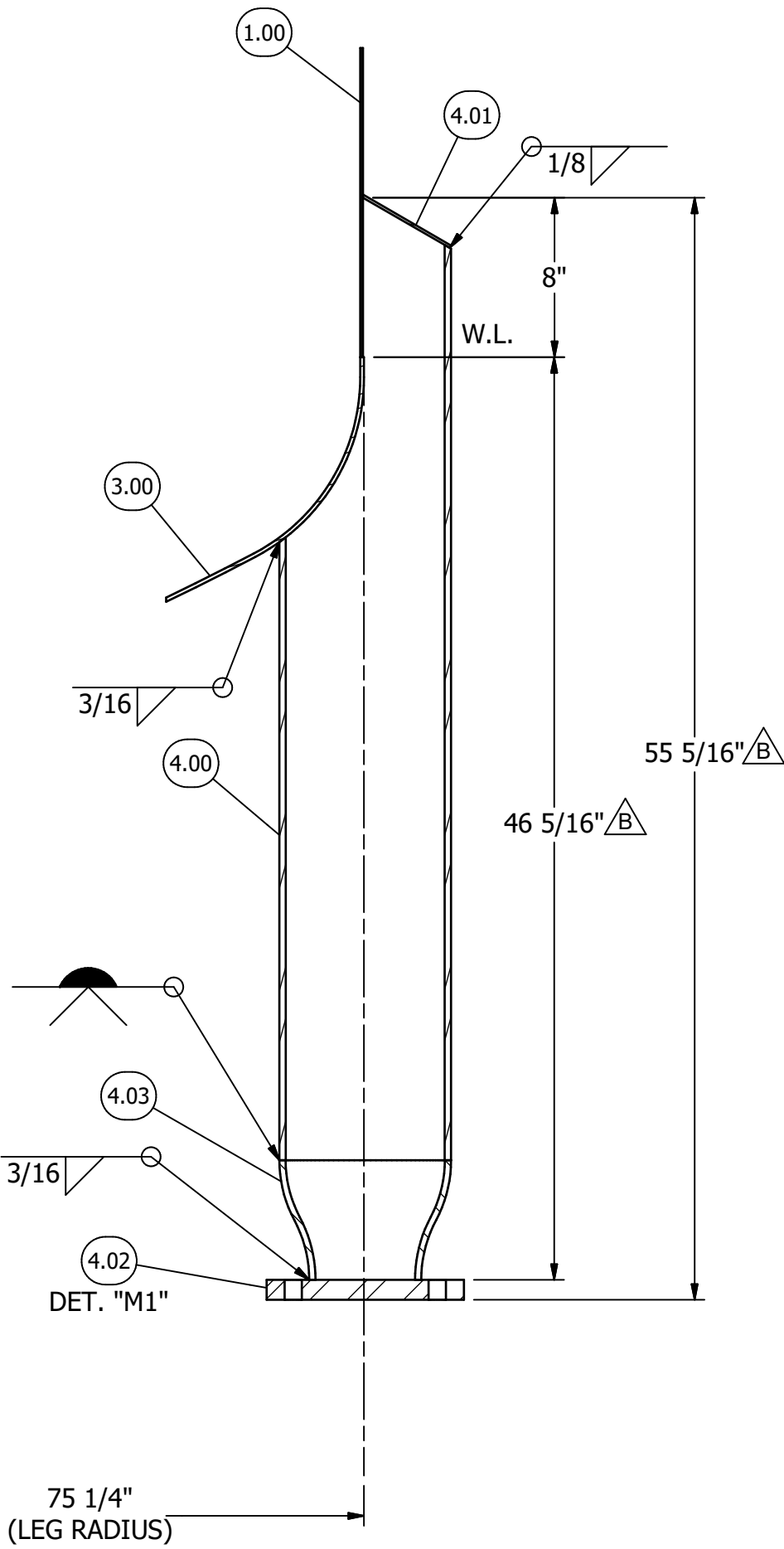




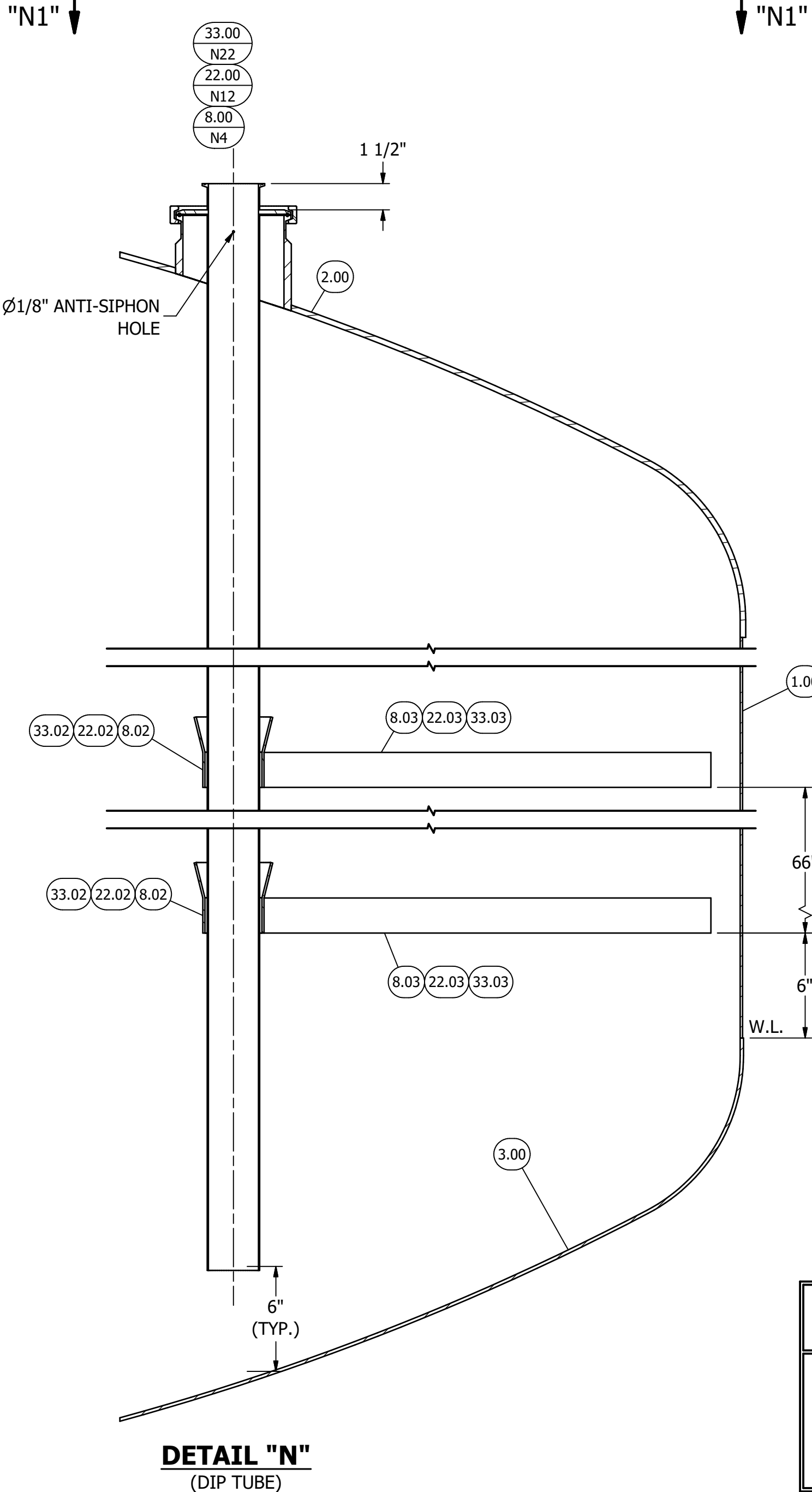
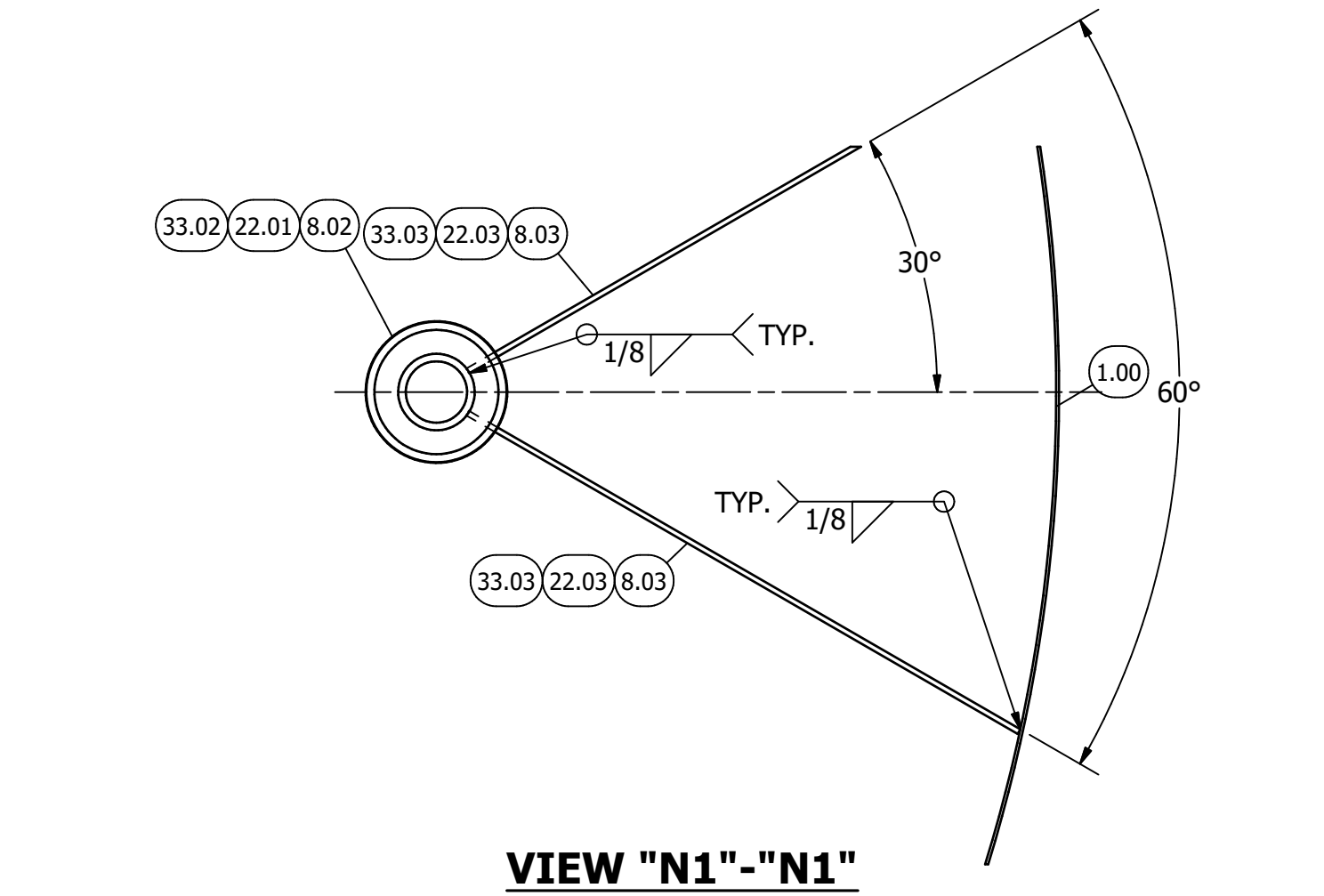
**DETAIL "L"**  
(BAFFLE)



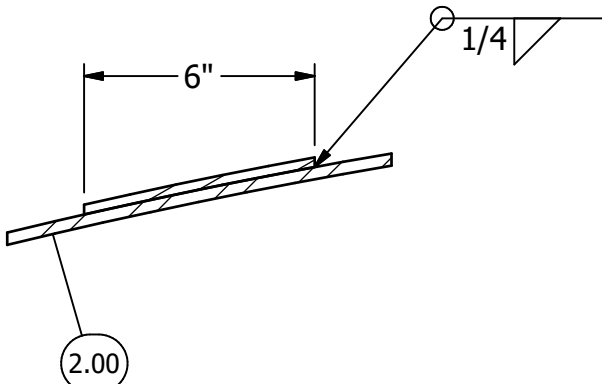
**DETAIL "M1"**  
(BASEPLATE)



**DETAIL "M"** B  
(LEG DETAIL)



**DETAIL "N"**  
(DIP TUBE)



**DETAIL "Q"**  
(PIPE SUPPORT PAD)

B	UPDATED DETAIL "M".	DS	SW	JB	10/30/2020
A	UPDATED DETAIL "M"; ADDED DETAIL "M1"; IN DETAIL "N": ADDED N22 (ITEM 33.00) , REMOVED DIMENSIONAL CHART; ADDED DETAIL VIEW "N1"-"N1"; ADDED DETAIL "Q"; RELEASED FOR FABRICATION.	DS	SW	JB	10/1/2020
REV	DESCRIPTION	DESIGNER	CHECKED BY	ENGINEER	DATE

CERTIFIED CORRECT AND RELEASED FOR FABRICATION
FABRICATION WILL BE IN ACCORDANCE WITH THIS DRAWING. ANY FURTHER CHANGES WILL BE REVIEWED FOR COST AND DELIVERY ADJUSTMENTS.
STAINLESS FABRICATION INCORPORATED

DRAWN	JONATHAN JONES	DATE	9/1/2020
CHECKED	DANIEL STAUFFER	DATE	9/4/2020
DES. ENGR. APPROVED	JEFF BRUNSON	DATE	9/4/2020
DETAILS SHEET 4 OF 4			
This Drawing Is The Property Of Stainless Fabrication, Inc. Do Not Print, Photograph, Copy, Or Use For Any Purpose Other Than That For Which It Is Specifically Furnished			
<b>Stainless Fabrication, Incorporated</b> 4455 W. Kearney Springfield, MO 65803 (417) 865-5696			
CHECKED BY	<div>APPROVED scott_walsh - 11/3/2020 10:59:23 AM</div> <div>APPROVED jeff_brunson - 11/3/2020 10:54:47 AM</div>		
ENGINEERED BY			
DRAWING NO.	13587-1-D4		
			B REVISION