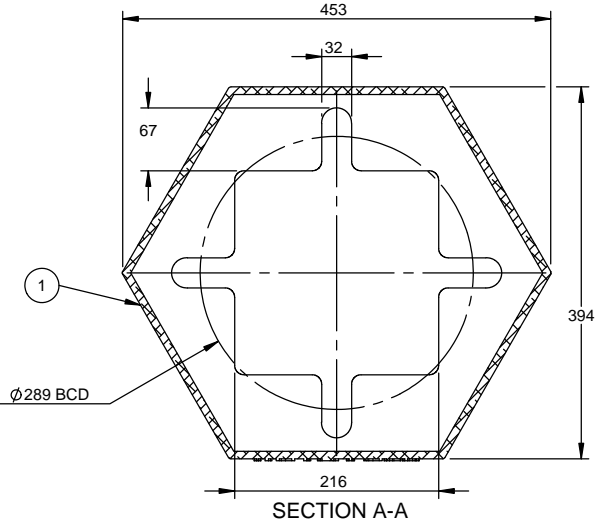



NOTES:

1. Design – Pole supporting one fixture of 3.0 sq.ft EPA –and 60 Lbs, is designed for maximum 150 km/h wind speed in accordance with AASHTO Standard Specifications.

Base Loads (Unfactored, No Ice, W.S.D.)			
Fz Axial	1.2 kN	Mz Torsion	0 kN*m
Fx	0.3 kN	Mx Overturning	5.9 kN*m
Fy	1.4 kN	My	1.2 kN*m

2. All units in metric (mm, kg) unless otherwise stated.
3. Stamp base plate both sides "NP YY" (YY=year).
4. Ship hardware accessories installed.
5. Welding: CSA W59, W47.1
6. Use anchor bds Ø1", Grade 400 (Fy=400 MPa Min.), 90mm Projection.
7. Finish: Powder Coated (See Work Order).



A	Issued for Approval				Oct 24, 2013	CV	EC
Rev.	Description				Date	Drawn	Apprd
Engineering Seal	Released Date:	Oct 24, 2013		<h1>NOVA POLE</h1>			
	Drawn By:	C Voiniciuc					
	Checked By:	Dan Jianu					
	Approved By:	Edward Cheng					
	Specification		<h2>6.7m Decorative Fluted Pole C/W Base Cover</h2>				
Spec # -			Job #		Size	Scale	Sheet 1 of 1
Ref # -			Q2807		B	NTS	
Product #				Dwg #		Rev.	
100-65-AA0001-F				100-65-AA0001-F		A	