



- LEGEND
- ◇ STEAM NUMBER
 - LIQUID FLOW, STD BPD
 - VAPOR FLOW, STD MSCFD
 - PRESSURE, PSIG
 - TEMPERATURE, °F

- NOTES:
- KEROSENE TO VAC RESID IS ~ 200 BPD.
 - FLOW SHOWN DOES NOT INCLUDE THE 200 BPD KERO CUTTER.

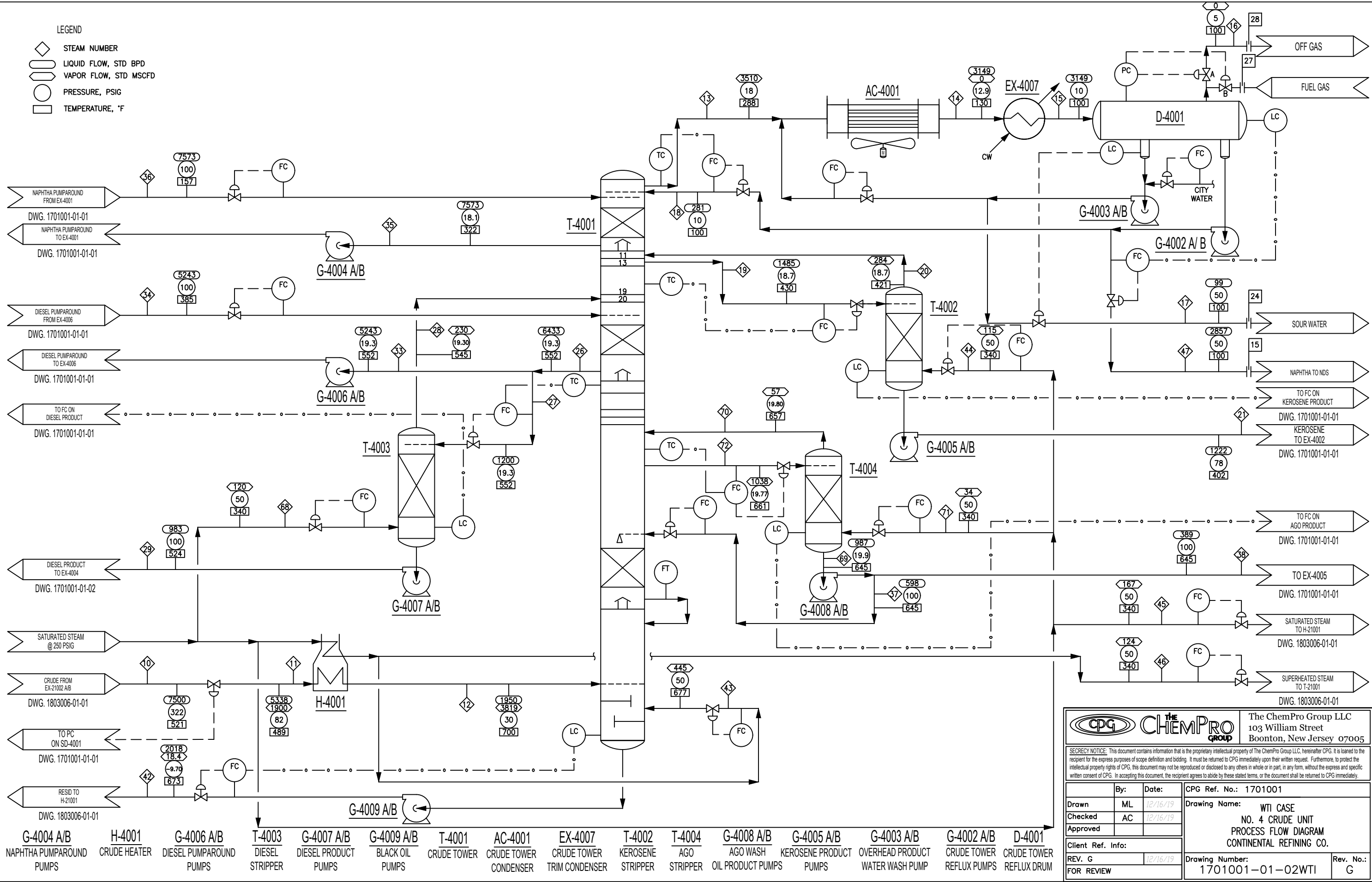
- EX-4001A/B/C NAPHTHA PUMPAROUND EXCHANGER
- AC-4002 A DIESEL AIR COOLER
- G-4001 A/B CRUDE CHARGE PUMPS
- EX-4003 DESALTER WATER FEED/EFFLUENT EXCHANGER
- EX-4002 CRUDE/KEROSENE PRODUCT EXCHANGER
- EX-4004 CRUDE/DIESEL PRODUCT EXCHANGER
- SD-4001 DESALTER
- EX-4005 A/B/C CRUDE/AGO PRODUCT EXCHANGER
- AC-4002 B KEROSENE AIR COOLER
- EX-4009 DIESEL CW COOLER
- AC-4003 AGO AIR COOLER
- EX-4008 KEROSENE CW COOLER
- EX-4006 A/B DIESEL PUMPAROUND EXCHANGER




The ChemPro Group LLC
103 William Street
Boonton, New Jersey 07005

SECRECY NOTICE: This document contains information that is the proprietary intellectual property of The ChemPro Group LLC, hereinafter CPG. It is loaned to the recipient for the express purposes of scope definition and bidding. It must be returned to CPG immediately upon their written request. Furthermore, to protect the intellectual property rights of CPG, this document may not be reproduced or disclosed to any others in whole or in part, in any form, without the express and specific written consent of CPG. In accepting this document, the recipient agrees to abide by these stated terms, or the document shall be returned to CPG immediately.

By:	Date:	CPG Ref. No.:
ML	12/16/19	1701001
Checked:	AC	Drawing Name:
Approved:		WTI CASE
Client Ref. Info:		NO. 4 CRUDE UNIT
REV. G	12/16/19	PROCESS FLOW DIAGRAM
FOR REVIEW		CONTINENTAL REFINING CO.
Drawing Number:		Rev. No.:
1701001-01-01WTI		G



**THE CHEMPRO GROUP**

The ChemPro Group LLC
103 William Street
Boonton, New Jersey 07005

SECURITY NOTICE: This document contains information that is the proprietary intellectual property of The ChemPro Group LLC, hereinafter CPG. It is loaned to the recipient for the express purposes of scope definition and bidding. It must be returned to CPG immediately upon their written request. Furthermore, to protect the intellectual property rights of CPG, this document may not be reproduced or disclosed to any others in whole or in part, in any form, without the express and specific written consent of CPG. In accepting this document, the recipient agrees to abide by these stated terms, or the document shall be returned to CPG immediately.

By:	Date:	CPG Ref. No.:
ML	12/16/19	1701001
Checked:	AC	Drawing Name:
Approved:		WTI CASE
Client Ref. Info:		NO. 4 CRUDE UNIT
REV. G 12/16/19		PROCESS FLOW DIAGRAM
FOR REVIEW		CONTINENTAL REFINING CO.
Drawing Number:		Rev. No.:
1701001-01-02WTI		G