



Owner & Operators Manual

Polyethylene Spreader

ACE TORWEL INC.

125 DEPOT STREET, BELLINGHAM, MA 02019

Ph: 1-800-225-9415

Fx: 1-888-310-2185

www.acetorwel.com

sales@acetorwel.com

Polyethylene Spreader

Features & Benefits of the Best Poly Spreader available on the market!



Manufactured and designed to operate & be maintained with ease. Its Polyethylene construction and electric drive system offer convenience, durability, and versatility.

This spreader has been in production for 5 years with many delighted users!!!



Built to Last Since 1946



	EE18-7P (7' short bed)	EE21-8P (8' bed)
Capacity	1.85 yard ³	2.1 yards ³
Overall length	101"	117"
Overall width	49"	49"
Overall height	37"	37"
Hopper length	86"	102"
Weight (dry)	400 lb	425 lb

Standard Features

Dual electric motor kit
Variable speed wireless controller
Fitted Tarp



Exposure To Moisture, Salt And Brine Comparison

Ace Torwel's Poly Spreader has the Controller and drive systems high upon the Spreader right under the Hood cover so it's totally protected compared to our major competitor's unit.

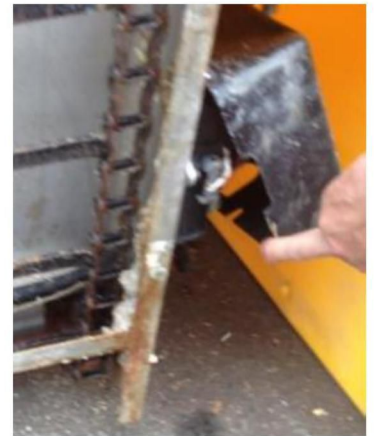


The controller and electrics are located at the bottom of the unit on our competitor's unit, this allows for corrosion when salt and brine get spilled.

These photos are from our competitor after only one season of operation.

The controller and electrics are corroded due to design location.

Don't let your Controller & Electrics look like this ... just due to poor location!!



Average Motor Life Comparison

Ace Torwel's low amperage draws 30 amps compared to 50 and 60 amps from our competitor, this is another large contributor to our competitor's reduced engine life compared to the Ace Torwel engine life. This means **average engine life for Ace Torwel's Poly Spreader is approximately 7 years.** Our major competitor's average life is just 3 years.



Tarp versus Hard Covers Comparison

Ace Torwel's Poly Spreader has an easy to remove Tarp cover.



Maintenance Cost

It is quite simple.... When there are less moving parts, there is less to set you back with parts & maintenance. Our major competitor has a large number of moving parts that make it susceptible for larger numbers of breakages, and downtime.

Wireless Remote Control

Economizer Poly Electric Spreaders also come standard with wireless remote control that **permits the operation of both motors independently for precise rate and pattern control.**

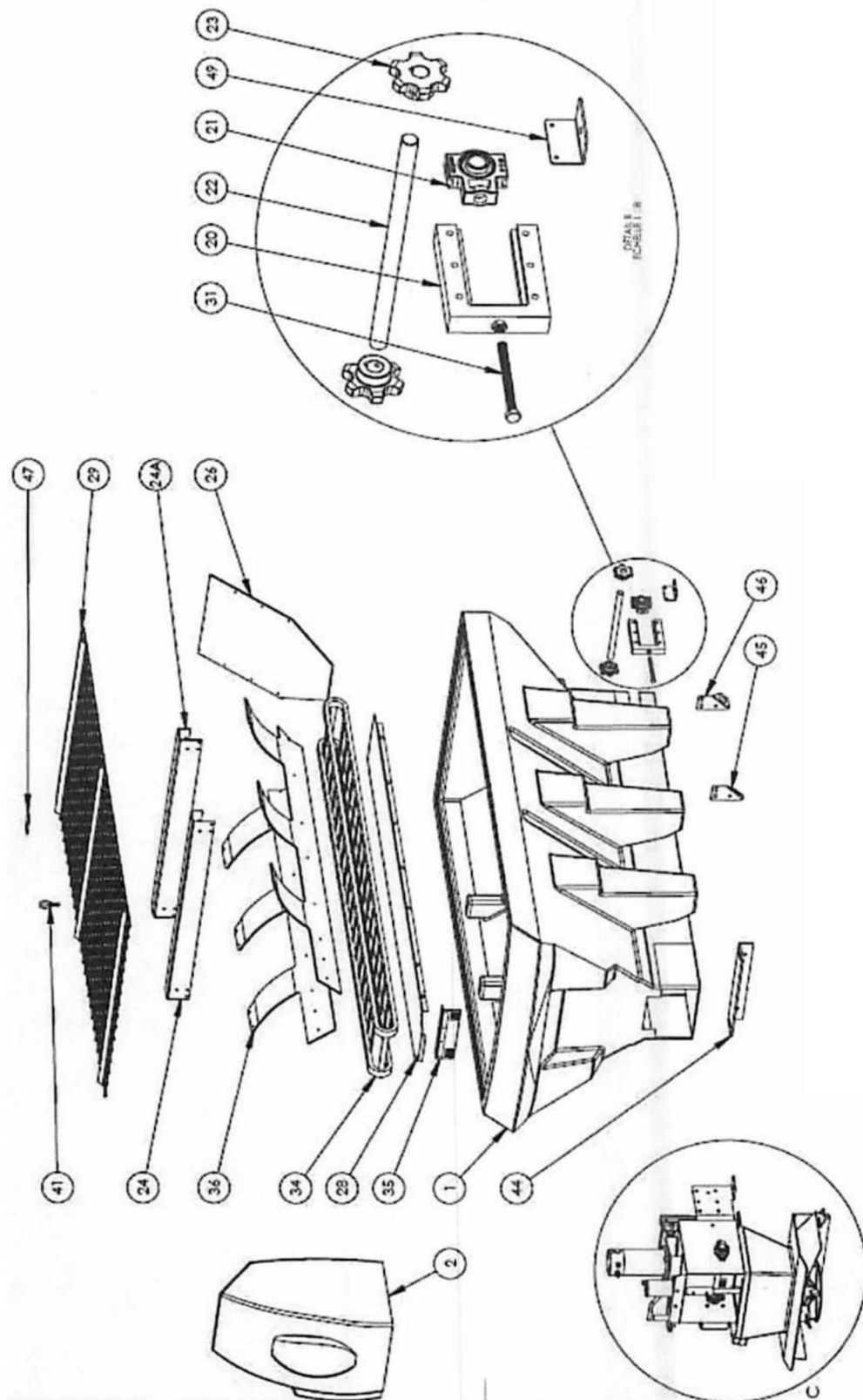
The programmable, variable speed remote controller allows synchronization of the spinner and conveyor chain at different speeds, enabling application rates to precisely match the vehicle's velocity. We offer **multiple cruise control setting options** that let the operator preprogram ideal application rates and spinner



patterns for the most common application speeds. As the truck velocity changes, the control settings can be adjusted to maintain an even, ideal application rate. ***Set it & Cruise or Adjust as needed!!***

As the truck velocity changes, the control settings can be adjusted just like a cruise control setting where you chose a preset number as the speed increases to maintain an even, ideal application rate. E.g. select your preset setting number 1 =10 Mph ideal application. select your preset setting number 2 = 20 Mph ideal application .

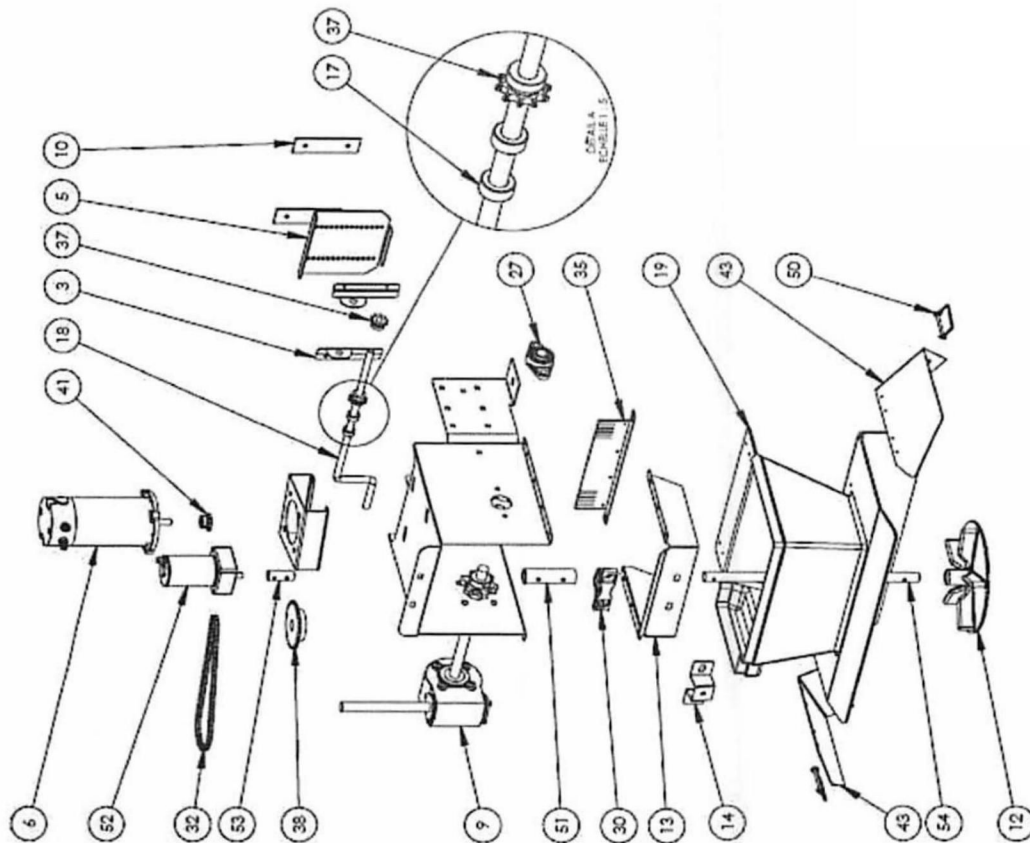
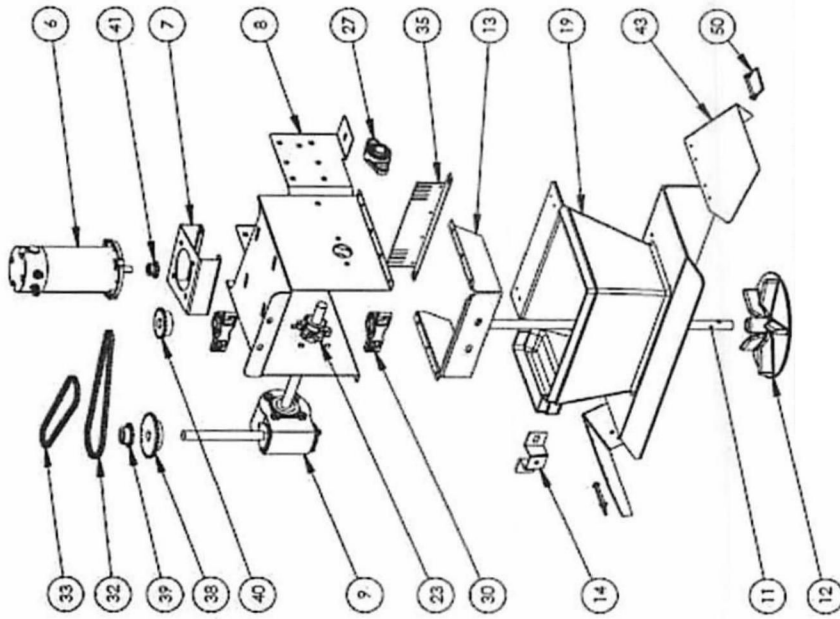




Ace Torwel Inc.
 125 Depot Street,
 Bellingham, MA, 02019.



PH: 1-800-225-9415
 Fax: 1-888-310-2185
sales@acetorwel.com
www.acetorwel.com



POLY SANDER PARTS BREAKDOWN
www.storksplows.com

ITEM#	DESCRIPTION	PART #
1	Polyethylene hopper	P001
2	Rear Cover	P002
3	Door slide right	PS003
4	Door slide left	PS003
5	Gate	PS005
6	Motor	PS006
7	Motor support	PS007
8	Rear support (in stainless steel) #P008A (In poly)	P008
9	Gear box	PS009
10	UHMW glider	P010
11	Spinner shaft	PS011
12	Spinner disc Stainless	PS012-ST
12	Spinner disc HDPE	PS012
13	Chute support	P013
14	Lid support	P014
17	Shaft collar - sold in pairs	PS017
18	Door handle	PS018
19	Chute	P019
20	Take-up holder	PS020
21	Take-up bearings	PS021
22	Conveyor shaft	PS022
23	Conveyor sprockets	PS023
24+24 A	Cross member	P024
25	Inverted V assembly	P025
26	Front deflector	P026
27	Roulement applique	P027
28	Conveyor floor	P028-8
29	Top screen	P029-8
30	Pillow block	PS030
31	Adjustable rod	PS031
32	Motor chain	PS032
33	Spinner chain	PS033
34	Conveyor chain	PS034-8
35	Wipper - sold in pairs	PS035
36	Side deflector	P036
37	Door sprocket	PS037
38	Motor driven sprocket	PS038
39	Drive sprocket for spinner	PS039
40	Driven sprocket for spinner	PS040
41	Motor sprocket	PS041
43	Chute deflector	PS043
44	Stopper for poly spreader	P044
45	Stabilisator attachment	P045
46	Stabilisator attachment	P046
47	Plate 2" X 4" Stainless	PS047
49	Ancor plate	P049
50	Lock pin for deflector	PS050
51	Rubber coupling	PS051
52	Spinner motor	PS052
53	Stub shaft	TG018
54	Spinner shaft dual motor	PS054

Ace Torwel Inc.
125 Depot Street,
Bellingham, MA, 02019.



PH: 1-800-225-9415
Fax: 1-888-310-2185
sales@acetorwel.com
www.acetorwel.com