



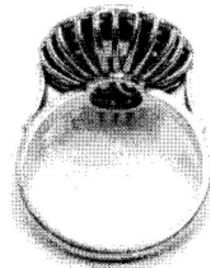
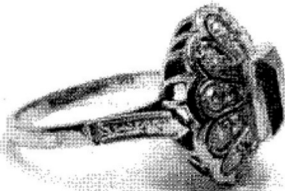
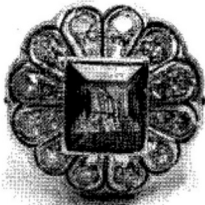
Customer: North Carolina Treasury Department

Address: 3200 Atlantic Avenue
Raleigh, North Carolina 27604

08/04/17

Appraisal

Purpose of Appraisal: **Fair Market Value**
Function of Appraisal: **Auction for Estate**



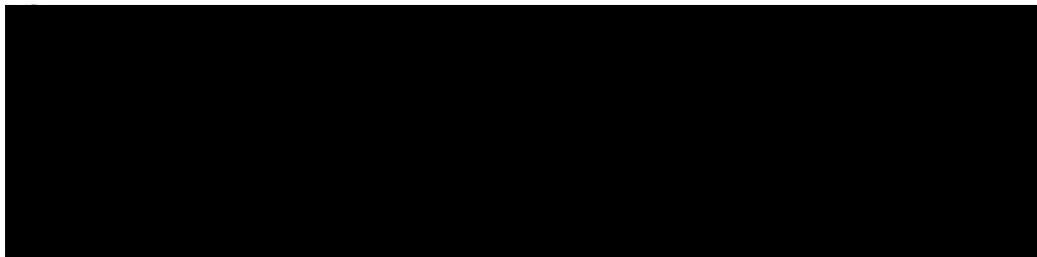
Jewelry: Emerald and diamond ring

Description:



One stamped & tested 18KT white and yellow gold lady's cast vintage ring with engraved sides and polished shank. The ring contains an emerald cut emerald bezel set in yellow gold in the center and multiple bead set single cut round accent diamonds surround it. The shank is 2.5 mm and the finger size is 7.5. It weighs 5.2 grams. Identified with markings of "18K". Condition is fair.





Containing:

Four bead set single cut diamonds, measuring 1.60 - 1.60 x 0.96mm (depth est.) approximate total weight of 4 Stones = 0.06ct.

Color I - J
Clarity SI-1 to SI-2
Cut Good

Twelve bead set transitional cut diamonds, measuring 2.50 - 2.50 x 1.55mm (depth est.) approximate total weight of 12 Stones = 0.71ct.

Color I - J
Clarity SI-1 to SI-2
Cut Good

One bezel set emerald standard step cut natural emerald, measuring 7.00 x 5.70 x 3.71mm, (depth est.) approximate weight of 1.09ct., clarity is heavily included, medium, moderately strong, very slightly bluish green color, (GIA vslbG 5/4), cut is good. Emerald is likely oiled.

Variety & Species Natural Emerald (Beryl)
Cutting Style Emerald Standard Step Cut
Measurements 7.00 x 5.70 x 3.71mm
Weight 1.09ct.
Clarity System GIA Type III Heavily Included

COLOR GRADE

Hue Very Slightly Bluish Green
Tone Medium
Saturation Moderately Strong
GIA Gemset ID vslbG 05/04

PROPORTIONS

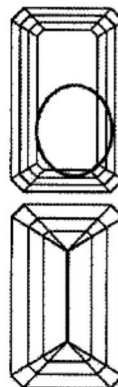
Total Depth % 65.0%
Culet None
Girdle Thickness Medium
Cut Good

FINISH

Polish Good
Symmetry Good

Stone Characteristics

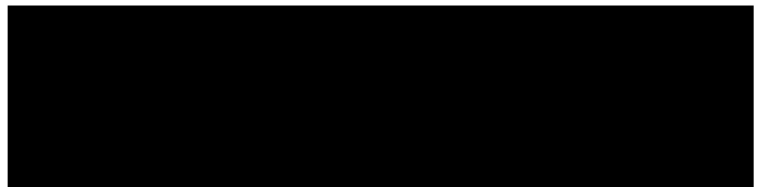
fingerprint



Total Weight of Colored Stones 1.09ct.
Total Weight of Diamonds 0.77ct.
Total Weight of Ring 5.20gm

Fair Market Value \$ 1500.00

August 4, 2017



Gold @ 1257.70 US

