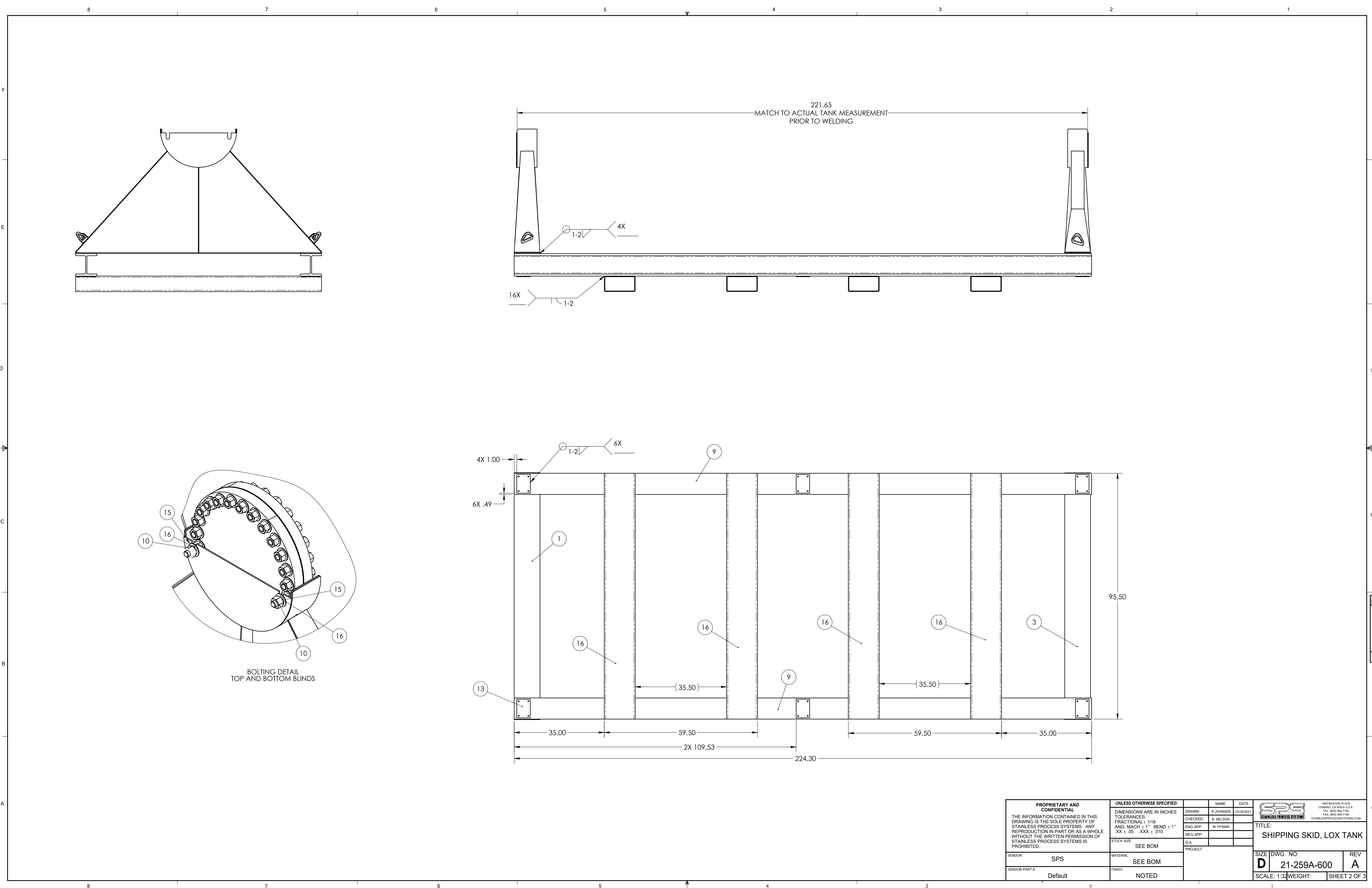



- NOTES:
1. ALL WELDED CONSTRUCTION.
 2. REMOVE BURRS, BREAK SHARP EDGES.
 3. ALL DIMENSIONS TO BE FINISHED DIMENSIONS WITHIN SPECIFIED TOLERANCE AND MAY REQUIRE SLIGHT ADJUSTMENT TO COMPENSATE FOR VARIATIONS IN WELDING PROCESS AND EQUIPMENT.
 4. WELDS SHALL BE NEAT IN APPEARANCE, FREE OF SLAG, UNDERCUTS AND OTHER DEFECTS.
 5. ALL MACHINED OR POLISHED SURFACES SHALL BE SUITABLY PROTECTED TO PREVENT DAMAGE DURING HANDLING AND TRANSPORTATION.
 6. FINISH TO BE: NONE

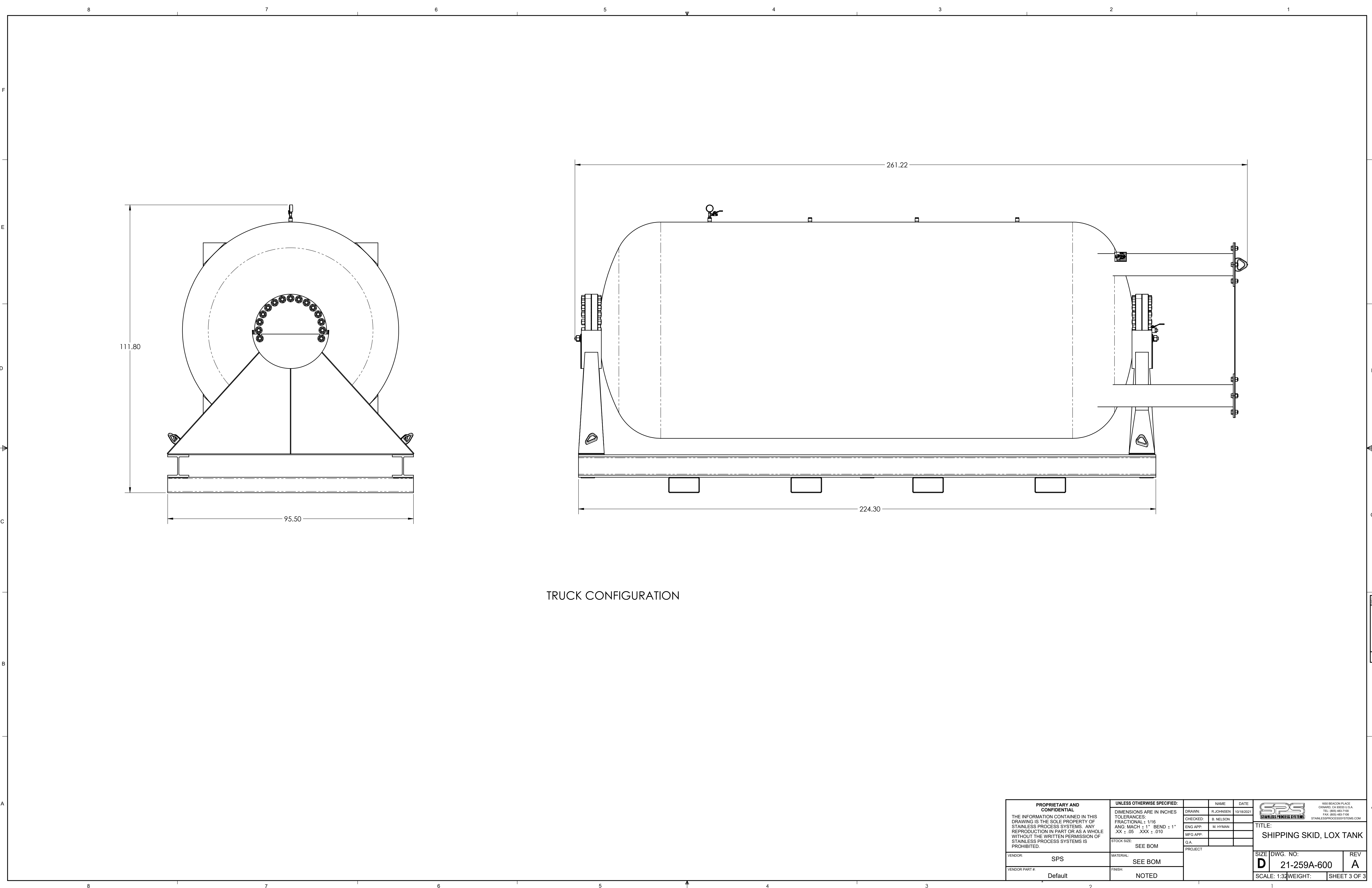
REVISIONS			
REV.	DESCRIPTION	DATE	APPROVED
A	INITIAL RELEASE	10/18/2021	RJ

18	24	92865A165	HEX HEAD SCREW, 1/2"-13 X 5/8"	MCMaster CARR	STEEL
17	24	90850A300	FLAT WASHER, 1/2" SCREW	MCMaster CARR	STEEL
16	4	92146A040	WASHER, SPLIT LOCKING, 1-1/4"	MCMaster CARR	18-8 SS
15	4	92141A040	FLAT WASHER, 1-1/4" SCREW	MCMaster CARR	18-8 SS
14	16	92620A953	HEX HEAD SCREW, 1"-8 X 2"	MCMaster CARR	STEEL
13	16	92141A038	FLAT WASHER, 1" SCREW	MCMaster CARR	18-8 SS
12	16	94895A038	HEX NUT, 1"-8	MCMaster CARR	STEEL
11	5	21-259A-614	FORK TUBE	95.5	Plain Carbon Steel
10	4	26LU96	NUT, HEX 1-1/4"-8 A194-B8	GRAINGER	ASTM A194 B8
9	2	21-259A-617	LEG PLATE WELDMENT	SEE BOM	SEE BOM
8	1	21-259A-501	NITROGEN INLET ASSEMBLY	SEE BOM	SEE BOM
7	1	21-259A-500	NITROGEN GAUGE ASSEMBLY	SEE BOM	SEE BOM
6	8	23515T42	SWIVEL CASTER, 5500# CAPACITY	MCMaster CARR	STEEL
5	6	21-259A-615	CASTER PADS	5.25 X 7.25	Plain Carbon Steel
4	1	21-259A-00	2800 GAL LOX TANK	SEE BOM	SEE BOM
3	1	21-259A-606	BOTTOM SKID WELDMENT	SEE BOM	SEE BOM
2	2	21-259A-613	LOX SKID I-BEAM	224.3	Plain Carbon Steel
1	1	21-259A-612	TOP SKID WELDMENT	SEE BOM	SEE BOM

ITEM NO.	QTY.	PART NUMBER	DESCRIPTION	STOCK SIZE	MATERIAL	
BILL OF MATERIALS						
<p>PROPRIETARY AND CONFIDENTIAL</p> <p>THE INFORMATION CONTAINED IN THIS DRAWING IS THE SOLE PROPERTY OF STAINLESS PROCESS SYSTEMS. ANY REPRODUCTION IN PART OR AS A WHOLE WITHOUT THE WRITTEN PERMISSION OF STAINLESS PROCESS SYSTEMS IS PROHIBITED.</p>		UNLESS OTHERWISE SPECIFIED:		NAME	DATE	
		<p>DIMENSIONS ARE IN INCHES</p> <p>TOLERANCES:</p> <p>FRACTIONAL = 1/16</p> <p>ANG: MACH ± 1° BEND ± 1°</p> <p>XX ± .05 .XXX ± .010</p>		DRAWN:	R. JOHNSON	10/18/2021
				CHECKED:	R. NELSON	
				ENG APP:	M. HYMAN	
		STOCK SIZE:		MFG APP:		
		SEE BOM		Q.A.		
		MATERIAL:		PROJECT		
VENDOR:		FINISH:		SIZE DWG. NO.:	REV	
SPS		SEE BOM		D	A	
VENDOR PART #:				SCALE: 1:3/4		
Default		NOTED		WEIGHT: 1520 LBS		
				SHEET 1 OF 3		



PROPRIETARY AND CONFIDENTIAL THE INFORMATION CONTAINED IN THIS DRAWING IS THE SOLE PROPERTY OF STAINLESS PROCESS SYSTEMS. ANY REPRODUCTION IN PART OR AS A WHOLE WITHOUT THE WRITTEN PERMISSION OF STAINLESS PROCESS SYSTEMS IS PROHIBITED.		UNLESS OTHERWISE SPECIFIED: DIMENSIONS ARE IN INCHES TOLERANCES: FRACTIONAL ± 1/16 ANG: MACH ± 1° BEND ± 1° XX ± .05 .XXX ± .010 STOCK SIZE: MATERIAL: FINISH:		DRAWN: CHECKED: ENG APP: MFG APP: Q.A. PROJECT	NAME B. NELSON M. HYMAN 	DATE 10/18/2021	 1000 BEACON PLACE ORLANDO, CA 93030 U.S.A. TEL: (800) 483-7100 FAX: (800) 483-7100 STAINLESSPROCESSSYSTEMS.COM	
		SEE BOM		TITLE: SHIPPING SKID, LOX TANK				
		VENDOR: SPS		SIZE DWG. NO.: D 21-259A-600				REV A
		VENDOR PART #: Default		SCALE: 1:32				WEIGHT:



TRUCK CONFIGURATION

PROPRIETARY AND CONFIDENTIAL THE INFORMATION CONTAINED IN THIS DRAWING IS THE SOLE PROPERTY OF STAINLESS PROCESS SYSTEMS. ANY REPRODUCTION IN PART OR AS A WHOLE WITHOUT THE WRITTEN PERMISSION OF STAINLESS PROCESS SYSTEMS IS PROHIBITED.		UNLESS OTHERWISE SPECIFIED: DIMENSIONS ARE IN INCHES TOLERANCES: FRACTIONAL $\pm 1/16$ ANG: MACH $\pm 1^\circ$ BEND $\pm 1^\circ$ XX $\pm .05$.XXX $\pm .010$ STOCK SIZE: SEE BOM		DRAWN: T. JOHNSON	NAME B. NELSON	DATE 10/18/2021
				CHECKED: B. NELSON		
				ENG APP: M. HYMAN		
				MFG APP: Q.A.		
VENDOR: SPS	MATERIAL: SEE BOM	PROJECT		SPS STAINLESS PROCESS SYSTEMS 1000 BEACON PLACE ORLANDO, CA 93030 U.S.A. TEL: (805) 483-7100 FAX: (805) 483-7105 STAINLESSPROCESSSYSTEMS.COM		
VENDOR PART #: Default	FINISH: NOTED					
		TITLE: SHIPPING SKID, LOX TANK				
		SIZE DWG. NO. D 21-259A-600		REV A		
		SCALE: 1:32		WEIGHT: SHEET 3 OF 3		