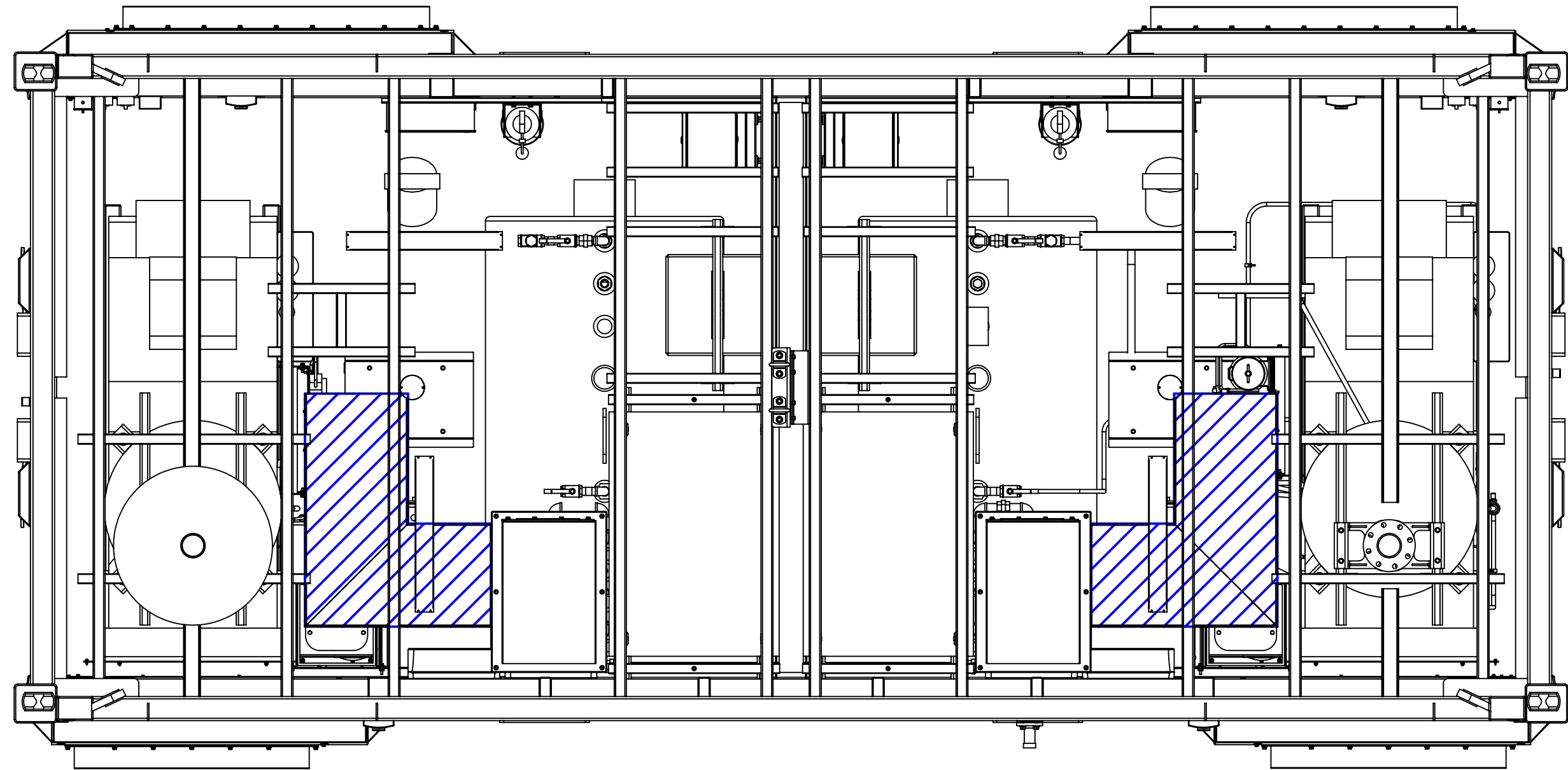
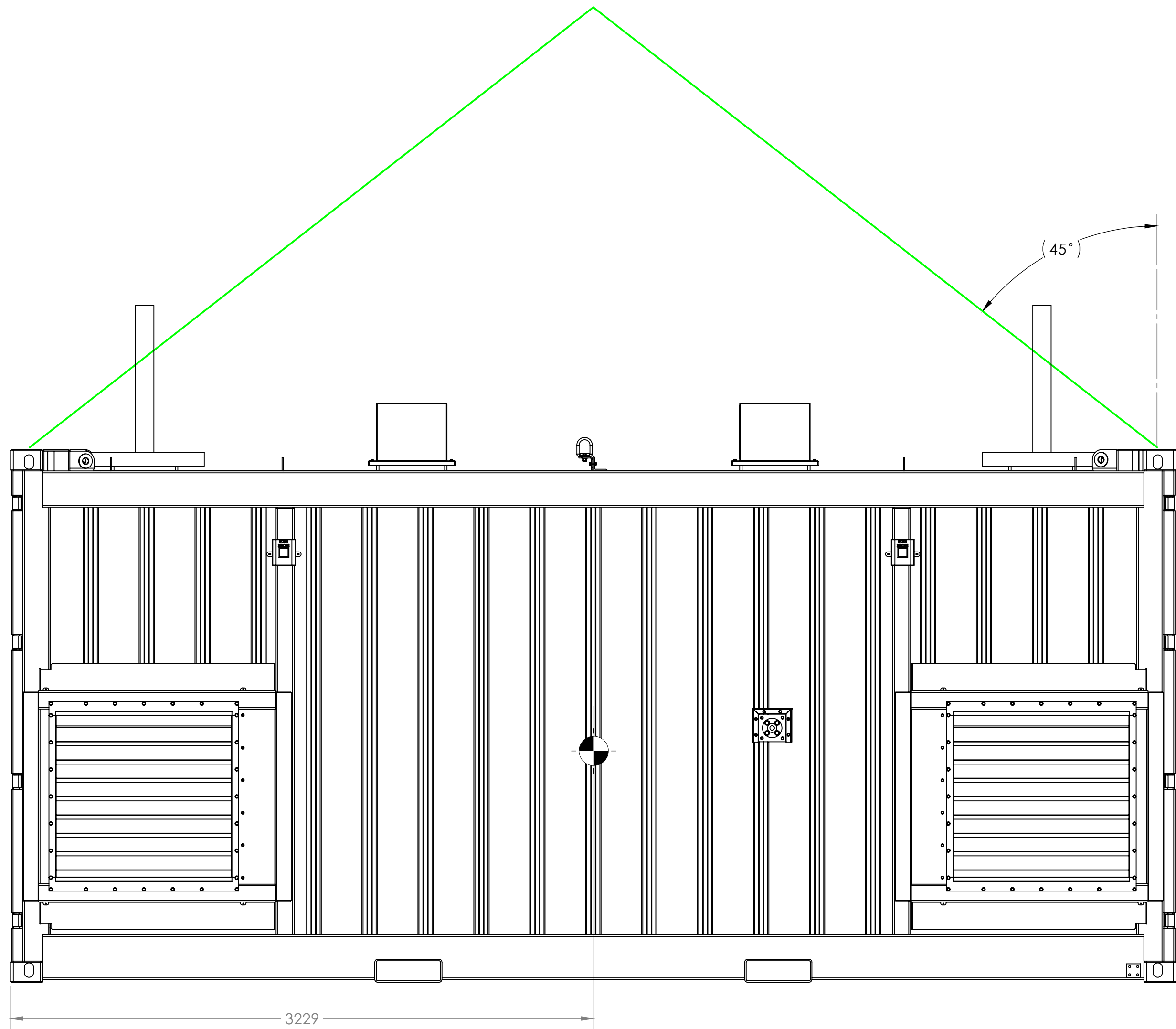
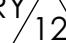



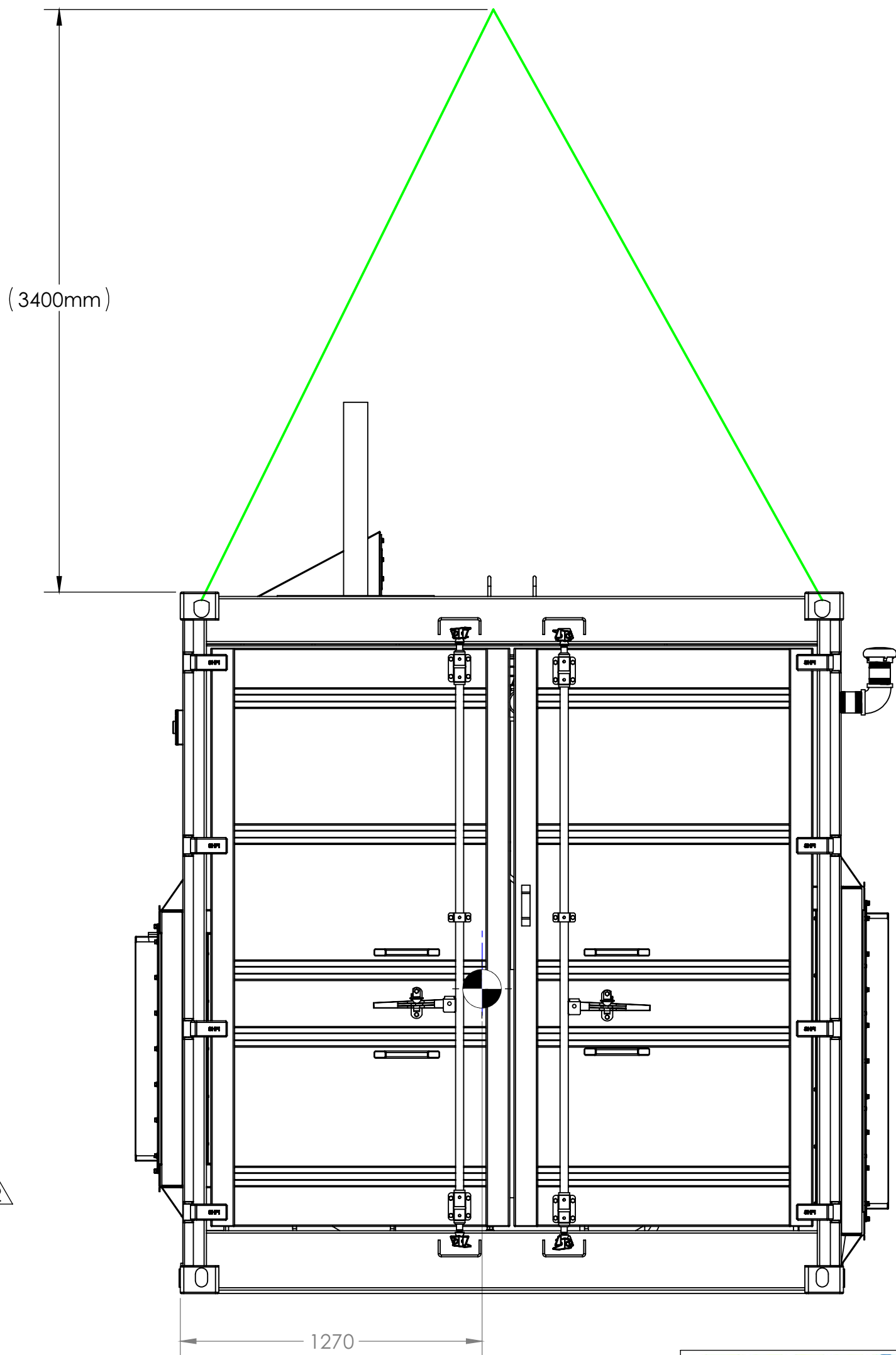
AVI MANUFACTURING INC. http://www.avimfg.com/ sales@avimfg.com 243 QUEEN ST. N. HAMILTON, ON L8R 3N6 PHONE: 905 545 7660 FAX: 905 545 7662	TOLERANCE NOTES (UNLESS OTHERWISE SPECIFIED) UNITS: INCH/POUNDS/SECONDS TOLERANCES: FRACTIONAL: 0/10 8" 1/16" DECIMAL: .005 ALL WELDING CARRIED OUT UNDER CERTIFICATION OF CSA W47.1 AND CONSTRUCTION PER REQUIREMENTS OF CSA W47.1		DRAWN BY: Z.LAKOVIC	DATE: 08/01/2019
	ISO 9001:2008 REGISTERED		CHECKED BY: J.PERMEJO	DATE: 08/01/2019
	THIRD ANGLE PROJECTION		APPROVED BY: V.DJERIC	DATE: 08/01/2019
	THE INFORMATION CONTAINED IN THIS DRAWING IS THE SOLE PROPERTY OF AVI MANUFACTURING INC. ANY REPRODUCTION IN PART OR AS A WHOLE WITHOUT THE WRITTEN PERMISSION OF AVI IS PROHIBITED.		TITLE: TOROMONT - 2X 72 KW WHITE ROSE ENCLOSURE	
SCALE 1:32 DO NOT SCALE DRAWINGS		SIZE: DWG. NO: D 61002900 - AS BUILT		REV: 12
APPROX WEIGHT: 33000 lb		SHEET 3 OF 5		





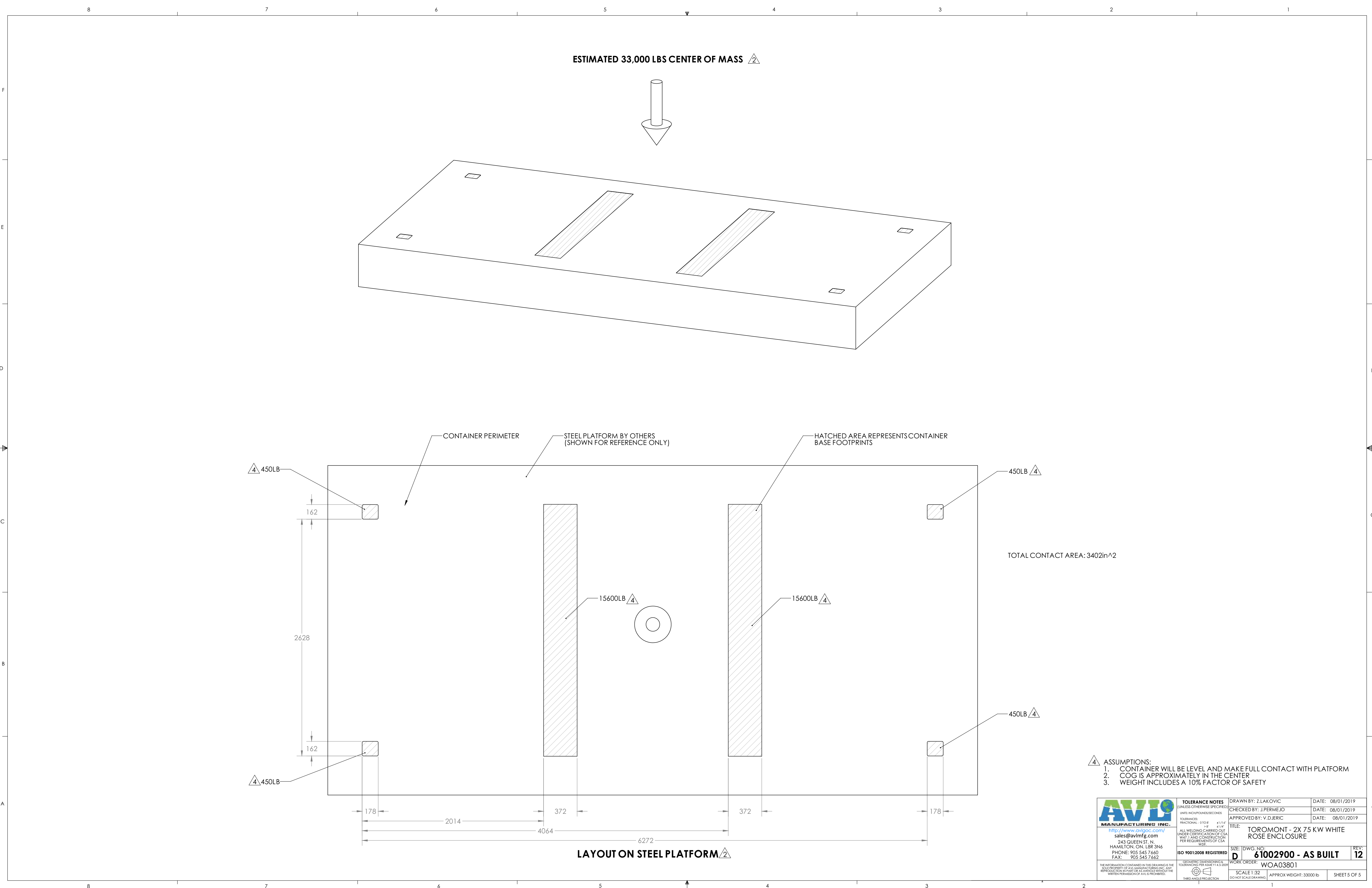
CABLETRAY LAYOUT
FOR CONTROL AND POWER CABLES  




CONTAINER TO BE ANCHORED TO
PLATFORM USING BOTTOM ENTRY 
TWIST LOCKS 



 AVLO MANUFACTURING INC. http://www.avlogoc.com/ sales@avlmfg.com 243 QUEEN ST. N. HAMILTON, ON. L9R 3N6 PHONE: 905 545 7660 FAX: 905 545 7662	TOLERANCE NOTES (UNLESS OTHERWISE SPECIFIED) UNITS: INCH/POUNDS/DEGREES TOLERANCES: FRACTIONAL: 0/10 8" 1/16" DECIMAL: .0005 ALL WELDING CARRIED OUT UNDER CERTIFICATION OF CSA W47 J AND CONSTRUCTION PER REQUIREMENTS OF CSA W47 J	DRAWN BY: Z.LAKOVIC	DATE: 08/01/2019
		CHECKED BY: J.PERMEJO	DATE: 08/01/2019
		APPROVED BY: V.DJERIC	DATE: 08/01/2019
		TITLE: TOROMONT - 2X 72 KW WHITE ROSE ENCLOSURE	
<small>THE INFORMATION CONTAINED IN THIS DRAWING IS THE SOLE PROPERTY OF AVLO MANUFACTURING INC. ANY REPRODUCTION IN PART OR AS A WHOLE WITHOUT THE WRITTEN PERMISSION OF AVLO IS PROHIBITED.</small> 	ISO 9001:2008 REGISTERED <small>GEOMETRIC DIMENSIONING & TOLERANCING PER ASME Y14.5-2009</small>	SIZE: DWG. NO: 61002900 - AS BUILT REV: 12	
		WORK ORDER:	
		SCALE 1:32 DO NOT SCALE DRAWING	APPROX WEIGHT: 33000 lb SHEET 4 OF 5



- △ ASSUMPTIONS:
1. CONTAINER WILL BE LEVEL AND MAKE FULL CONTACT WITH PLATFORM
 2. COG IS APPROXIMATELY IN THE CENTER
 3. WEIGHT INCLUDES A 10% FACTOR OF SAFETY

 MANUFACTURING INC. http://www.avlogc.com/ sales@avlmfg.com 243 QUEEN ST. N. HAMILTON, ON. L8R 3N6 PHONE: 905 545 7660 FAX: 905 545 7662	TOLERANCE NOTES (UNLESS OTHERWISE SPECIFIED) UNITS: INCH/POUNDS/SECONDS TOLERANCES: FRACTIONAL: 0/10" 1/16" DECIMAL: .005" .015" ALL WELDING CARRIED OUT UNDER CERTIFICATION OF CSA W47 J AND CONSTRUCTION PER REQUIREMENTS OF CSA W47	DRAWN BY: Z.LAKOVIC DATE: 08/01/2019
	CHECKED BY: J.PERMEJO DATE: 08/01/2019	APPROVED BY: V.DJERIC DATE: 08/01/2019
	TITLE: TOROMONT - 2X 75 KW WHITE ROSE ENCLOSURE	SIZE: DWG. NO: 61002900 - AS BUILT REV: 12
	ISO 9001:2008 REGISTERED GEOMETRIC DIMENSIONING & TOLERANCING PER ASME Y14.5-2009 THIRD ANGLE PROJECTION	WORK ORDER: WOA03801 SCALE 1:32 APPROX WEIGHT: 33000 lb SHEET 5 OF 5