


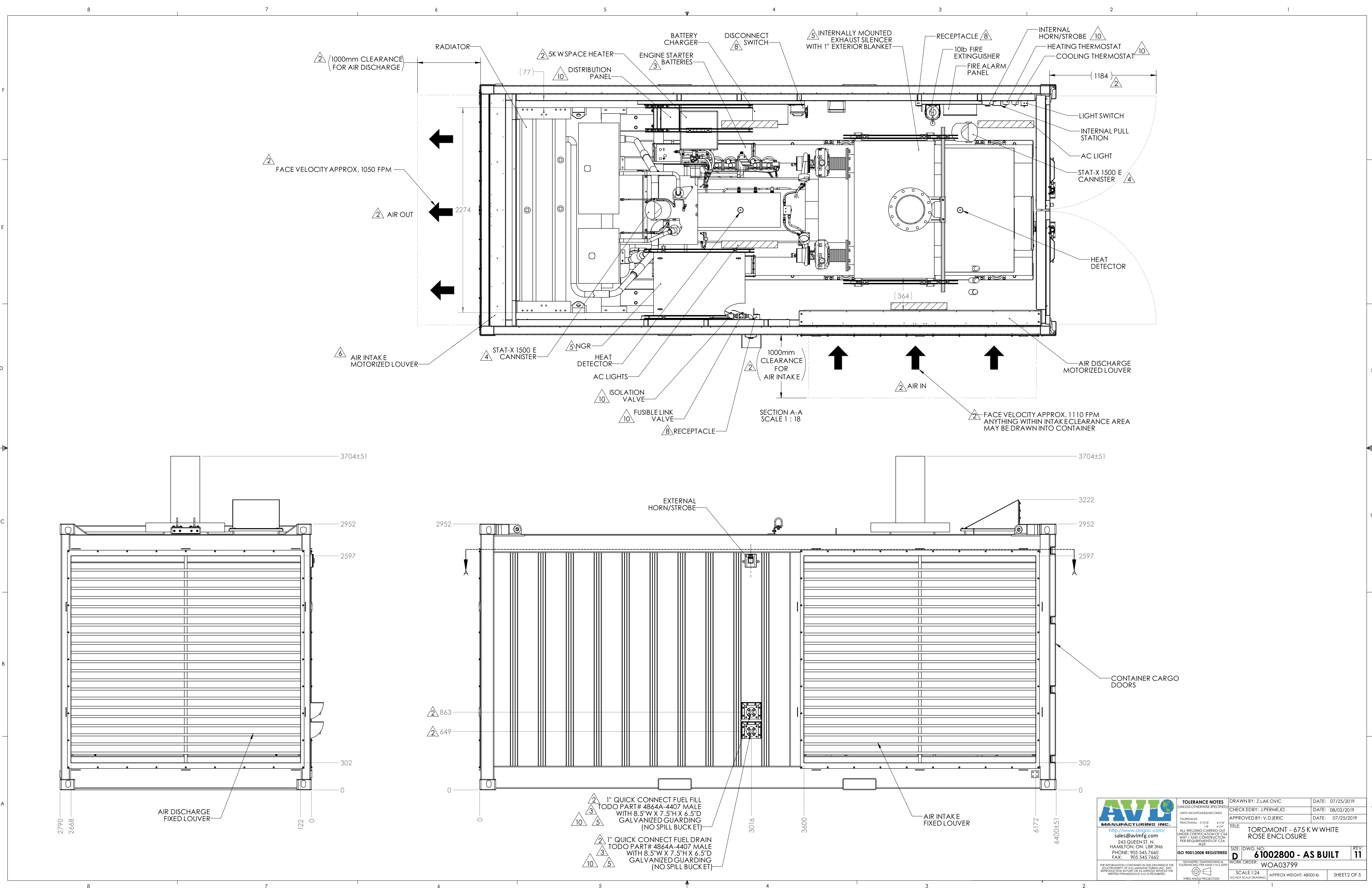
ITEM	SUPPLY	
	TOROMONT	AVL
MECHANICAL		
DNV ISO Container		X
CAT C32 675kW Genset	X	
Generator Isolation Mounts	X	
Fuel Piping to Exterior of Enclosure		X
Internally Mounted Exhaust Silencer		X
Carbon Steel Exhaust Stack - Single Wall Construction (3' above roof level)		X
Mounting Allocation for all Major Equipment		X
SAFETY SYSTEMS		
1 x 10lb CO ₂ Fire Extinguishers		X
1 x Fire Alarm Panel		X
2 x Fenwal Heat Detectors (200 F)		X
1 x Internal Pull Station		X
1 x Internal Horn/Strobe		X
1 x External Horn/Strobe		X
ELECTRICAL		
Interior Lighting		X
1 x 5 kW Space Heater		X
Genset Control Panel	X	
NGR Model# 14779	X	
Junction Box-1 H24 X W16 X D8		X
AC Distribution Panel H30 X W24 X D8		X
Disconnect Switch H20 X W10 X D10		X
Batteries part# 9X-9730	X	
Battery Charger part# TBD	X	
Battery Cables size TBD	X	
2 x Receptacle GFCI 15A 125VAC		X
Wiring & Termination of various instruments and sensors		X

AS BUILT

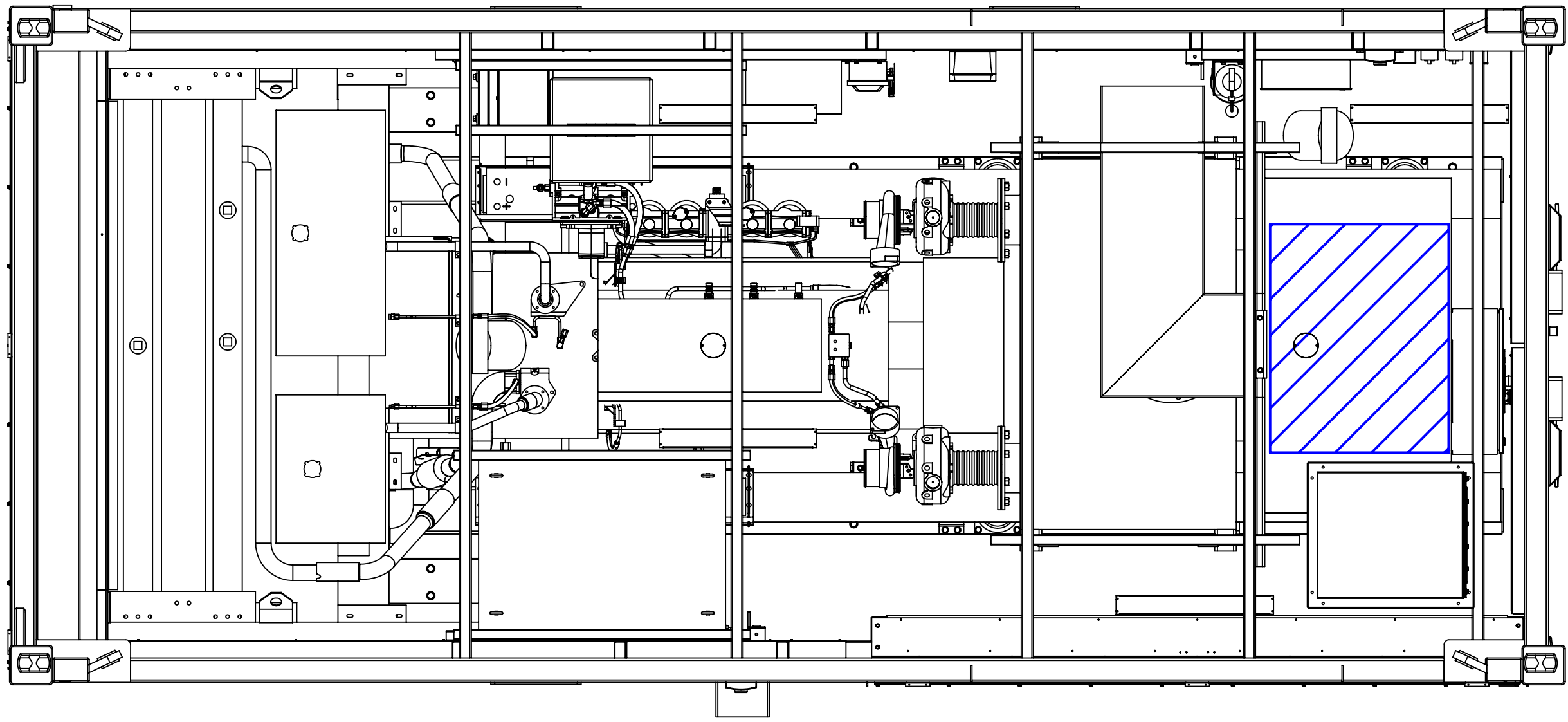
- NOTES:
- ENCLOSURE IS DESIGNED AND TESTED IN ACCORDANCE WITH DNV 2.7-17 EN12079 / ISO 10855 / IMO MSC CIRC 860 CERTIFIED
 - ENCLOSURE CONSTRUCTION
 - FLOOR:
 - 3/16" CHECKER PLATE
 - MIN. 2" SPILL CONTAINMENT AROUND SKID PERIMETER
 - WALLS:
 - 4" R15 INSULATION
 - GALVANIZED SHEET LINER
 - ROOF:
 - 4" R15 INSULATION
 - GALVANIZED SHEET LINER
 - FINISH: PAINTED TO DNV CONTAINER SUPPLIER STANDARD PAINT SPECIFICATIONS - RAL5010
 - TOLERANCE: +25mm PER 2000mm UNLESS OTHERWISE SPECIFIED
- COMPONENTS FOR INSTALL AT SITE WILL BE SHOWN ON AS BUILT DRAWINGS

11	UPDATED LIFTING REQUIREMENTS	Z.LAK OVIC	12/18/2020		
10	AS BUILT	Z.LAK OVIC	08/19/2020	K.BABU	08/20/2020
9	REVERTED JUNCTION BOX TO DISTRIBUTION PANEL	Z.LAK OVIC	01/08/2020		
8	UPDATED CONTROL PANEL AND GENERATOR HEIGHT ADDED DISCONNECT SWITCH AND RECEPTACLES	Z.LAK OVIC	01/03/2020		
7	MOVED ENGINE AND CONTROL PANEL	Z.LAK OVIC	11/27/2019		
6	UPDATED CABLE WEDGE ENTRY SIZE	Z.LAK OVIC	11/12/2019		
5	UPDATED EXHAUST TIE-OFFS, FILL/DRAIN PORTS, AND NGR LOCATION	Z.LAK OVIC	11/08/2019		
4	UPATED WEDGE LOCATION	Z.LAK OVIC	10/07/2019		
3	UPDATED NGR AND BATTERY LOCATIONS PER CUSTOMER COMMENTS	Z.LAK OVIC	09/30/2019		
2	UPDATES AS PER CUSTOMER REQUEST	Z.LAK OVIC	09/09/2019		
1	ADDED AC DISTRIBUTION PANEL	Z.LAK OVIC	08/07/2019		
REV.	DESCRIPTION	CHANGED BY	DATE	CHECKED BY	DATE
REVISIONS					

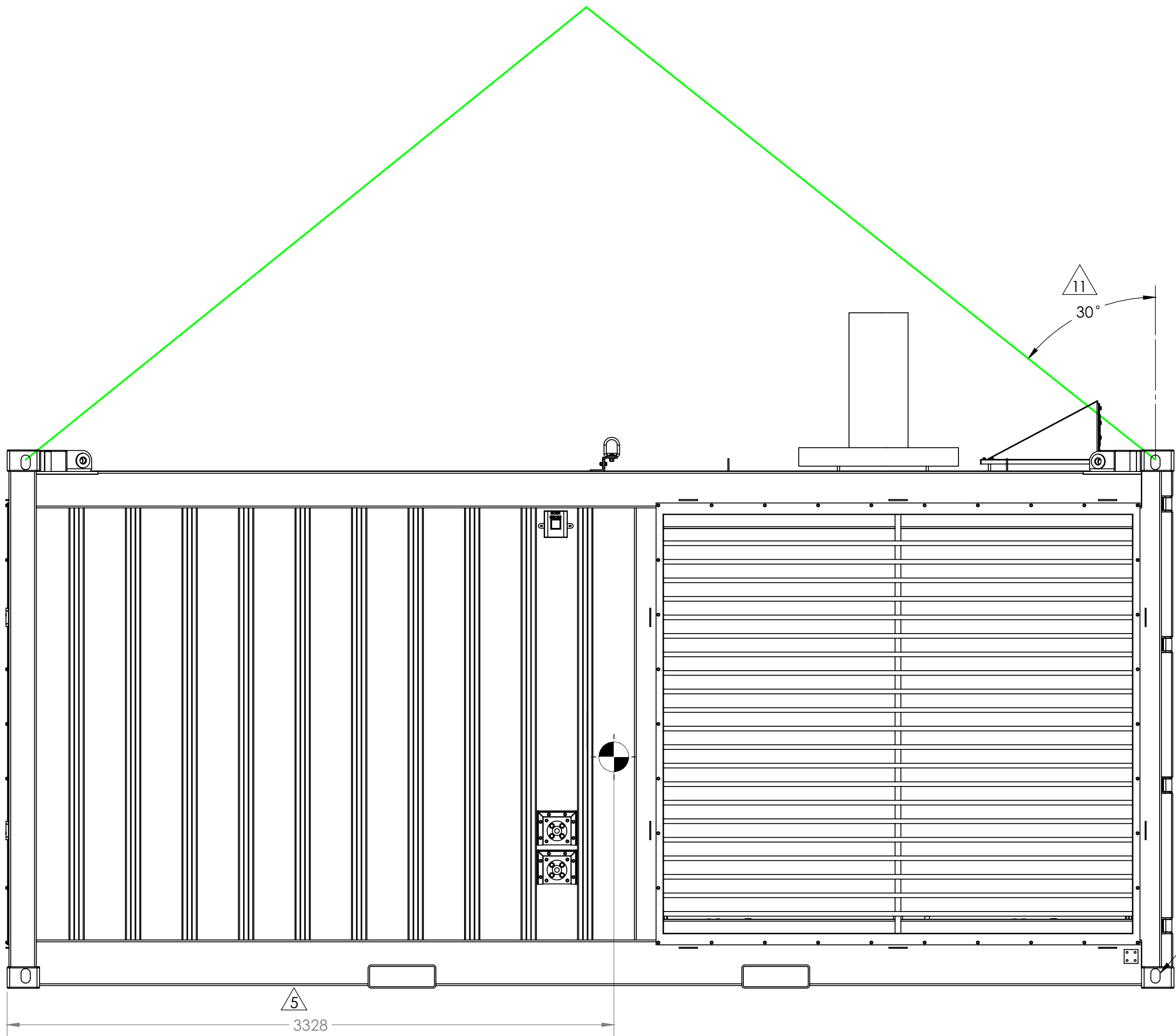
 AVL MANUFACTURING INC. http://www.avlgoc.com sales@avlmfg.com 243 QUEEN ST. N. HAMILTON, ON L8R 3N6 PHONE: 905 545 7660 FAX: 905 545 7662	TOLERANCE NOTES (UNLESS OTHERWISE SPECIFIED) UNITS: INCH/POUNDS/SECONDS TOLERANCES: FRACTIONAL: 0/10 8 1/16 1/8 ALL WELDING CARRIED OUT UNDER CERTIFICATION OF CSA W47.1 AND CONSTRUCTION PER REQUIREMENTS OF CSA 1025	DRAWN BY: Z.LAK OVIC CHECKED BY: J.PERMEO APPROVED BY: V.DJERIC	DATE: 07/25/2019 DATE: 08/02/2019 DATE: 08/02/2019
	ISO 9001:2008 REGISTERED	TITLE: TOROMONT - 675 KW WHITE ROSE ENCLOSURE	
	GEOMETRIC DIMENSIONING & TOLERANCING PER ASME Y14.5-2009 THIRD ANGLE PROJECTION	SIZE: (DWG. NO.) 61002800 - AS BUILT REV: 11	
		WORK ORDER: WOA03799	
		SCALE 1:24 APPROX WEIGHT: 48000 lb SHEET 1 OF 5	
	THE INFORMATION CONTAINED IN THE DRAWING IS THE SOLE PROPERTY OF AVL MANUFACTURING INC. ANY REPRODUCTION OR TRANSMISSION IN ANY FORM WITHOUT THE WRITTEN PERMISSION OF AVL IS PROHIBITED.		



AVLO MANUFACTURING INC. http://www.avloinc.com/ sales@avloinc.com 243 QUEEN ST. N. HAMILTON, ON L8R 3N6 PHONE: 905 545 7660 FAX: 905 545 7662	TOLERANCE NOTES (UNLESS OTHERWISE SPECIFIED) UNITS: INCHES/POUNDS/SECONDS TOLERANCES: FRACTIONAL: 0/10 8" 1/16" DECIMAL: .010 .015 .031 ALL WELDING CARRIED OUT UNDER CERTIFICATION OF CSA W47 J1 AND CONSTRUCTION PER REQUIREMENTS OF CSA 1025	DRAWN BY: Z.LAK OVIC CHECKED BY: J.P. MEJO APPROVED BY: V.DJERIC	DATE: 07/25/2019 DATE: 08/02/2019 DATE: 07/25/2019
	ISO 9001:2008 REGISTERED GEOMETRIC DIMENSIONING & TOLERANCING PER ASME Y14.5-2009 THIRD ANGLE PROJECTION	TITLE: TOROMONT - 675 KW WHITE ROSE ENCLOSURE	REV: 11
	SCALE 1:24 DID NOT SCALE DRAWING	APPROX WEIGHT: 48000 lb	SHEET 2 OF 5
	WORK ORDER: WOA03799	SIZE: DWG. NO: 61002800 - AS BUILT	

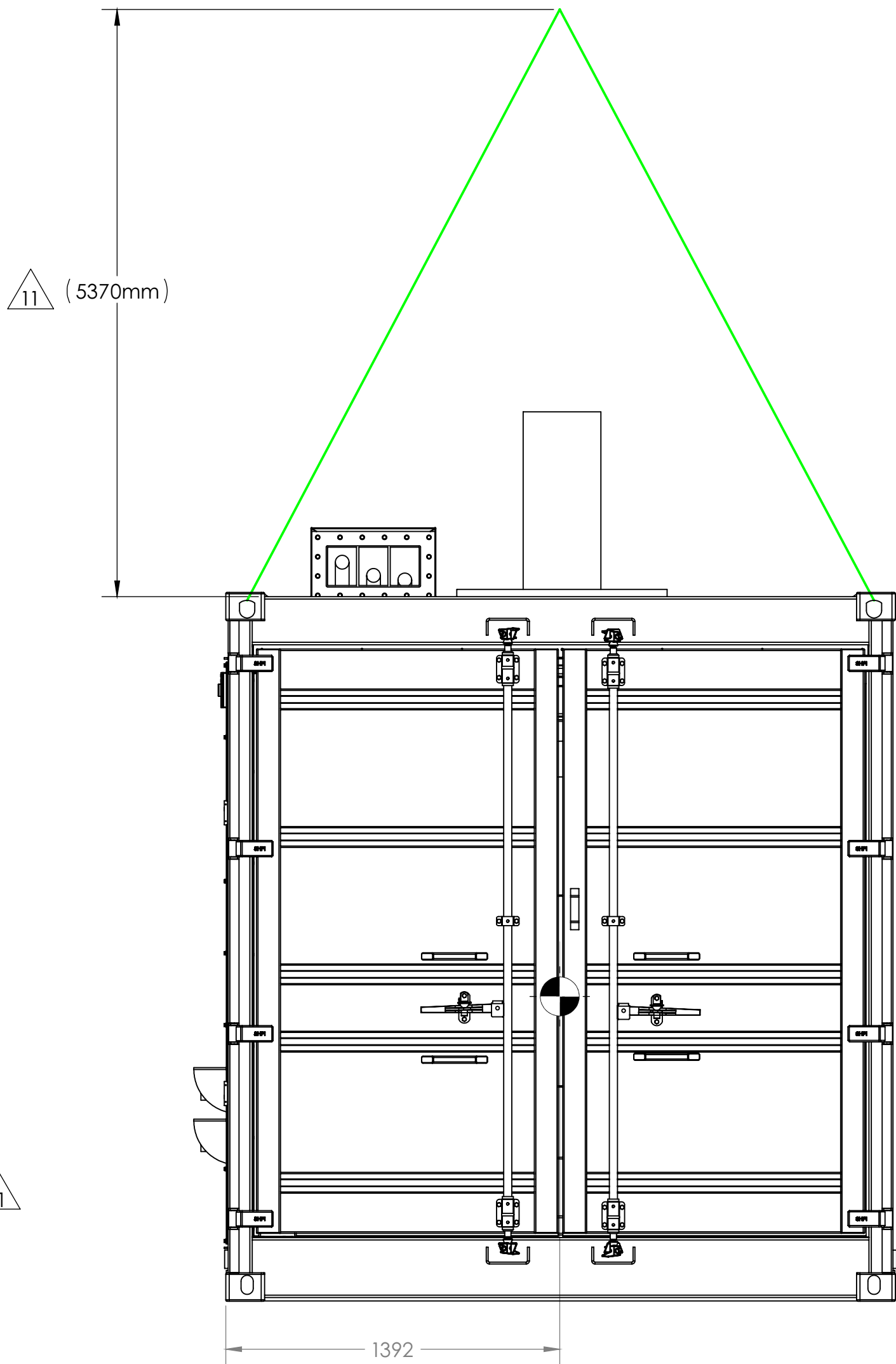



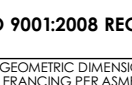
CABLETRAY LAYOUT
FOR CONTROL AND POWER CABLES

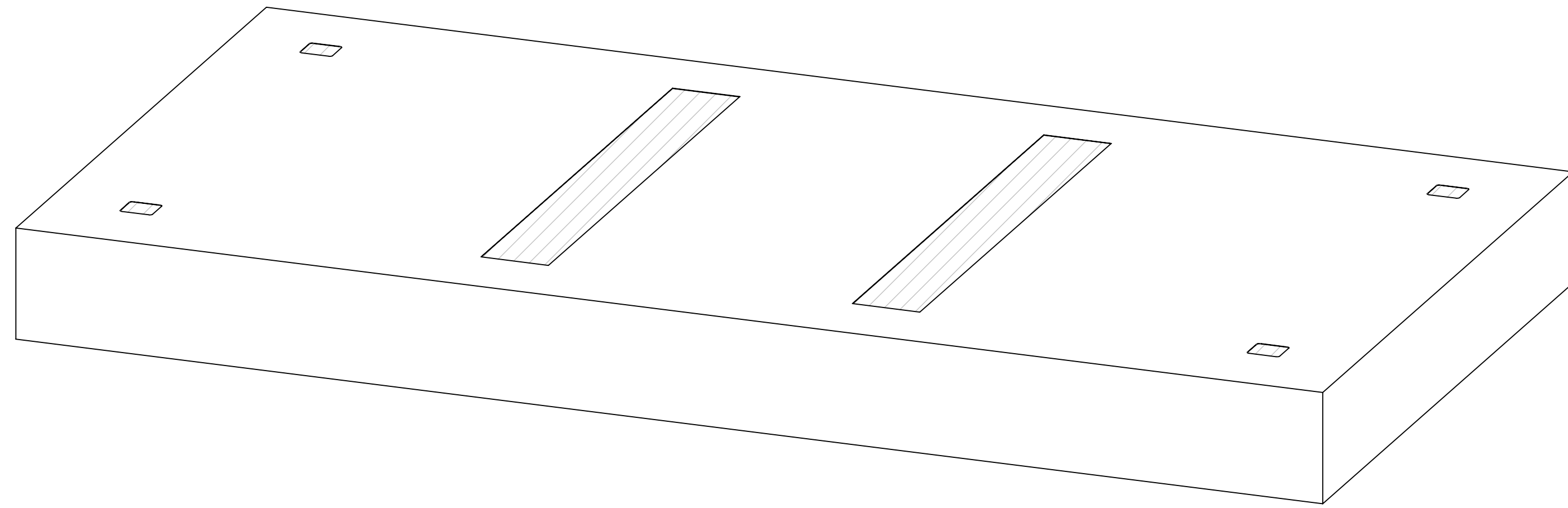



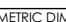
ASSUMED COG BASED ON SUPPLIED
ENGINE INFORMATION

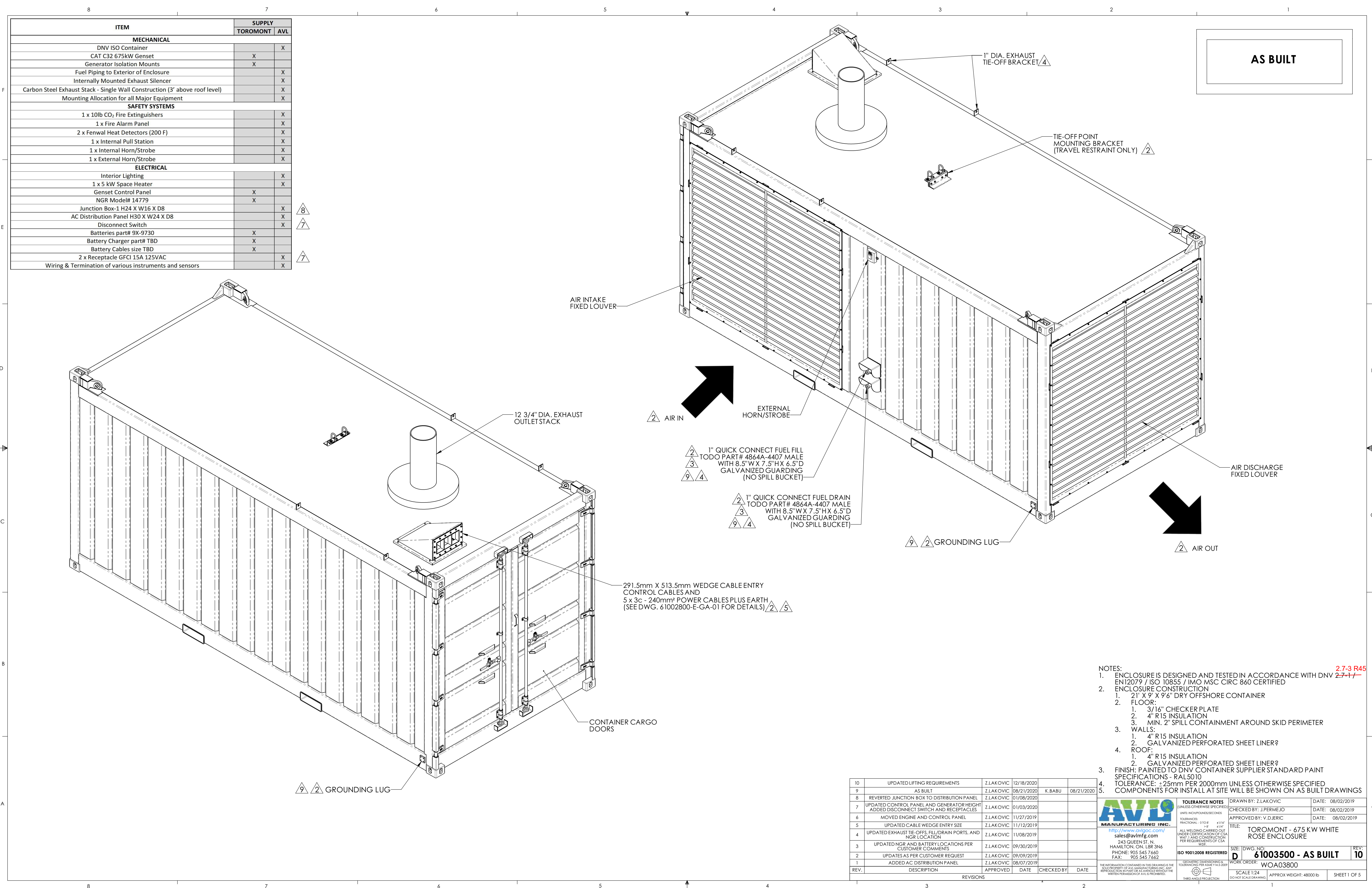
CONTAINER TO BE ANCHORED TO
PLATFORM USING BOTTOM ENTRY
TWIST LOCKS



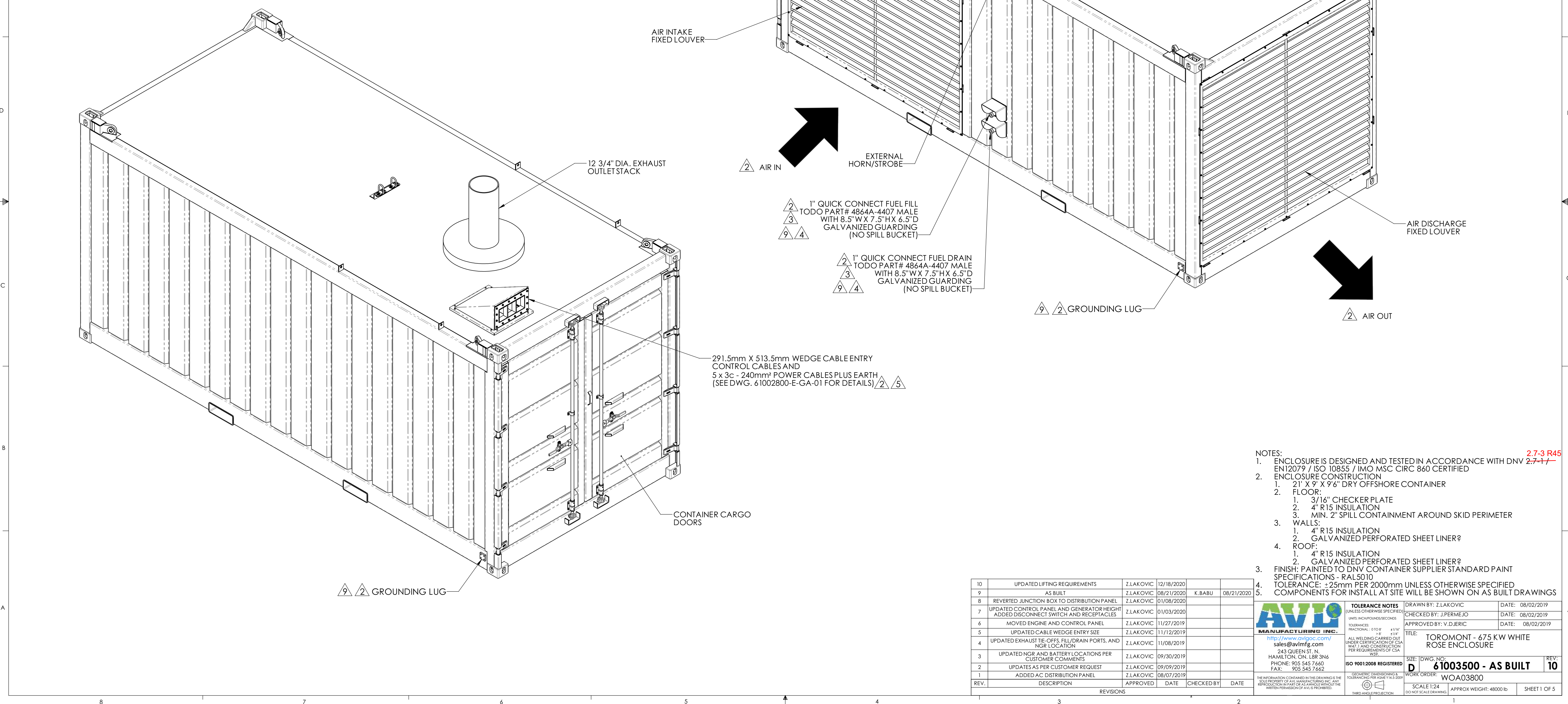
 AVLO MANUFACTURING INC. http://www.avlogc.com/ sales@avlmfg.com 243 QUEEN ST. N. HAMILTON, ON. L9R 3N6 PHONE: 905 545 7660 FAX: 905 545 7662	TOLERANCE NOTES (UNLESS OTHERWISE SPECIFIED) UNITS: INCH/POUNDS/SECONDS TOLERANCES: FRACTIONAL: 0/10 8" ±1/16" DECIMAL: .0005 ±.001" ALL WELDING CARRIED OUT UNDER CERTIFICATION OF CSA W47 J AND CONSTRUCTION PER REQUIREMENTS OF CSA W47 J	DRAWN BY: Z.LAK OVIC DATE: 07/25/2019	
		CHECKED BY: J.PERMEJO DATE: 08/02/2019	
		APPROVED BY: V.DJERIC DATE: 07/25/2019	
		TITLE: TOROMONT - 675 KW WHITE ROSE ENCLOSURE	
ISO 9001:2008 REGISTERED  GEOMETRIC DIMENSIONING & TOLERANCING PER ASME Y14.5-2009 THIRD ANGLE PROJECTION	SIZE: DWG. NO: 61002800 - AS BUILT REV: 11	WORK ORDER:	
		SCALE: 1:25	
		APPROX WEIGHT: 48000 lb	
		SHEET 4 OF 5	



 <p>AMV MANUFACTURING INC.</p> <p>http://www.amvg.com/ sales@amvg.com</p> <p>243 QUEEN ST. N. HAMILTON, ON. L8R 3N6 PHONE: 905 545 7400 FAX: 905 545 7662</p>	<p>TOLERANCE NOTES (UNLESS OTHERWISE SPECIFIED)</p> <p>FINISH: UNPOLISHED/RECOINS</p> <p>FRONTS: 1/16" ± TOLERANCES: 1/32" ± 1/16" ± 1/8" ± 1/4" ± 1/2" ± 1"</p> <p>ALL WELDING CORNER JOINTS UNDER CERTIFICATION OF CSA W47.1 AND CONTRIBUTION PER REQUIREMENTS OF CSA W59.</p>		<p>DATE: 07/25/2019</p> <p>DATE: 08/02/2019</p> <p>DATE: 07/25/2019</p>
	<p>TITLE:</p> <p>TOROMONT - 675 K W WHITE ROSE ENCLOSURE</p>		
	<p>SIZE: DWG. NO:</p> <p>D 610A2800 - AS BUILT</p>		<p>REV: 11</p>
	<p>WORK ORDER:</p> <p>W00A3799</p>		
<p></p> <p>THIRD ANGLE PROJECTION</p>		<p>SCALE: 1/25</p> <p>DO NOT SCALE DRAWING</p>	<p>APPROX WEIGHT: 48000 LB</p> <p>SHEETS OF 5</p>



ITEM	SUPPLY	
	TOROMONT	AVL
MECHANICAL		
DNV ISO Container		X
CAT C32 675kW Genset	X	
Generator Isolation Mounts	X	
Fuel Piping to Exterior of Enclosure		X
Internally Mounted Exhaust Silencer		X
Carbon Steel Exhaust Stack - Single Wall Construction (3' above roof level)		X
Mounting Allocation for all Major Equipment		X
SAFETY SYSTEMS		
1 x 10lb CO ₂ Fire Extinguishers		X
1 x Fire Alarm Panel		X
2 x Fenwal Heat Detectors (200 F)		X
1 x Internal Pull Station		X
1 x Internal Horn/Strobe		X
1 x External Horn/Strobe		X
ELECTRICAL		
Interior Lighting		X
1 x 5 kW Space Heater		X
Genset Control Panel	X	
NGR Model# 14779	X	
Junction Box-1 H24 X W16 X D8		X
AC Distribution Panel H30 X W24 X D8		X
Disconnect Switch		X
Batteries part# 9X-9730	X	
Battery Charger part# TBD	X	
Battery Cables size TBD	X	
2 x Receptacle GFCI 15A 125VAC		X
Wiring & Termination of various instruments and sensors		X



10	UPDATED LIFTING REQUIREMENTS	Z.LAKOVIC	12/18/2020		
9	AS BUILT	Z.LAKOVIC	08/21/2020	K.BABU	08/21/2020
8	REVERTED JUNCTION BOX TO DISTRIBUTION PANEL	Z.LAKOVIC	01/08/2020		
7	UPDATED CONTROL PANEL AND GENERATOR HEIGHT ADDED DISCONNECT SWITCH AND RECEPTACLES	Z.LAKOVIC	01/03/2020		
6	MOVED ENGINE AND CONTROL PANEL	Z.LAKOVIC	11/27/2019		
5	UPDATED CABLE WEDGE ENTRY SIZE	Z.LAKOVIC	11/12/2019		
4	UPDATED EXHAUST TIE-OFFS, FILL/DRAIN PORTS, AND NGR LOCATION	Z.LAKOVIC	11/08/2019		
3	UPDATED NGR AND BATTERY LOCATIONS PER CUSTOMER COMMENTS	Z.LAKOVIC	09/30/2019		
2	UPDATES AS PER CUSTOMER REQUEST	Z.LAKOVIC	09/09/2019		
1	ADDED AC DISTRIBUTION PANEL	Z.LAKOVIC	08/07/2019		
REV.	DESCRIPTION	APPROVED	DATE	CHECKED BY	DATE

10

9

8

7

6

5

4

3

2

1

10

9

8

7

6

5

4

3

2

1

10

9

8

7

6

5

4

3

2

1

10

9

8

7

6

5

4

3

2

1

10

9

8

7

6

5

4

3

2

1

10

9

8

7

6

5

4

3

2

1

10

9

8

7

6

5

4

3

2

1

10

9

8

7

6

5

4

3

2

1

10

9

8

7

6

5

4

3

2

1

10

9

8

7

6

5

4

3

2

1

10

9

8

7

6

5

4

3

2

1

10

9

8

7

6

5

4

3

2

1

10

9

8

7

6

5

4

3

2

1

10

9

8

7

6

5

4

3

2

1

10

9

8

7

6

5

4

3

2

1

10

9

8

7

6

5

4

3

2

1

10

9

8

7

6

5

4

3

2

1

10

9

8

7

6

5

4

3

2

1

10

9

8

7

6

5

4

3

2

1

10

9

8

7

6

5

4

3

2

1

10

9

8

7

6

5

4

3

2

1

10

9

8

7

6

5

4

3

2

1

10

9

8

7

6

5

4

3

2

1

10

9

8

7

6

5

4

3

2

1

10

9

8

7

6

5

4

3

2

1

10

9

8

7

6

5

4

3

2

1

10

9

8

7

6

5

4

3

2

1

10

9

8

7

6

5

4

3

2

1

10

9

8

7

6

5

4

3

2

1

10

9

8

7

6

5

4

3

2

1

10

9

8

7

6

5

4

3

2

1

10

9

8

7

6

5

4

3

2

1

10

9

8

7

6

5

4

3

2

1

10

9

8

7

6

5

4

3

2

1

10

9

8

7

6

5

4

3

2

1

10

9

8

7

6

5

4

3

2

1

10

9

8

7

6

5

4

3

2

1

10

9

8

7

6

5

4

3

2

1

10

9

8

7

6

5

4

3

2

1

10

9

8

7

6

5

4

3

2

1

10

9

8

7

6

5

4

3

2

1

10

9

8

7

6

5

4

3

2

1

10

9

8

7

6

5

4

3

2

1

10

9

8

7

6

5

4

3

2

1

10

9

8

7

6

5

4

3

2

1

10

9

8

7

6

5

4

3

2

1

10

9

8

7

6

5

4

3

2

1

10

9

8

7

6

5

4

3

2

1

10

9

8

7

6

5

4

3

2

1

10

9

8

7

6

5

4

3

2

1

10

9

8

7

6

5

4

3

2

1

10

9

8

7

6

5

4

3

2

1

10

9

8

7

6

5

4

3

2

1

10

9

8

7

6

5

4

3

2

1

10

9

8

7

6

5

4

3

2

1

10

9

8

7

6

5

4

3

2

1

10

9

8

7

6

5

4

3

2

1

10

9

8

7

6

5

4

3

2

1

10

9

8

7

6

5

4

3

2

1

10

9

8

7

6

5

4

3

2

1

10

9

8

7

6

5

4

3

2

1

10

9

8

7

6

5

4

3

2

1

10

9

8

7

6

5

4

3

2

1

10

9

8

7

6

5

4

3

2

1

10

9

8

7

6

5

4

3

2

1

10

9

8

7

6

5

4

3

2

1

10

9

8

7

6

5

4

3

2

1

10

9

8

7

6

5

4

3

2

1

10

9

8

7

6

5

4

3

2

1

10

9

8

7

6

5

4

3

2

1

10

9

8

7

6

5

4

3

2

1

10

9

8

7

6

5

4

3

2

1

10

9

8

7

6

5

4

3

2

1

10

9

8

7

6

5

4

3

2

1

10

9

8

7

6

5

4

3

2

1

10

9

8

7

6

5

4

3

2

1

10

9

8

7

6

5

4

3

2

1

10

9

8

7

6

5

4

3

2

1

10

9

8

7

6

5

4

3

2

1

10

9

8

7

6

5

4

3

2

1

10

9

8

7

6

5

4

3

2

1

10

9

8

7

6

5

4

3

2

1

10

9

8

7

6

5

4

3

2

1

10

9

8

7

6

5

4

3

2

1

10

9

8

7

6

5

4

3

2

1

10

9

8

7

6

5

4

3

2

1

10

9

8

7

6

5

4

3

2

1

10

9

8

7

6

5

4

3

2

1

10

9

8

7

6

5

4

3

2

1

10

9

8

7

6

5

4

3

2

1

10

9

8

7

6

5

4

3

2

1

10

9

8

7

6

5

4

3

2

1

10

9

8

7

6

5

4

3

2

1

10

9

8

7

6

5

4

3

2

1

10

9

8

7

6

5

4

3

2

1

10

9

8

7

6

5

4

3

2

1

10

9

8

7

6

5

4

3

2

1

10

9

8

7

6

5

4

3

2

1

10

9

8

7

6

5

4

3

2

1

10

9

8

7

6

5

4

3

2

1

10

9

8

7

6

5

4

3

2

1

10

9

8

7

6

5

4

3

2

1

10

9

8

7

6

5

4

3

2

1

10

9

8

7

6

5

4

3

2

1

10

9

8

7

6

5

4

3

2

1

10

9

8

7

6

5

4

3

2

1

10

9

8

7

6

5

4

3

2

1

10

9

8

7

6

5

4

3

2

1

10

9

8

7

6

5

4

3

2

1

10

9

8

7

6

5

4

3

2

1

10

9

8

7

6

5

4

3

2

1

10

9

8

7

6

5

4

3

2

1

10

9

8

7

6

5

4

3

2

1

10

9

8

7

6

5

4

3

2

1

10

9

8

7

6

5

4

3

2

1

10

9

8

7

6

5

4

3

2

1

10

9

8

7

6

5

4

3

2

1

10

9

8

7

6

5

4

3

2

1

10

9

8

7

6

5

4

3

2

1

10

9

8

7

6

5

4

3

2

1

10

9

8

7

6

5

4

3

2

1

10

9

8

7

6

5

4

3

2

1

10

9

8

7

6

5

4

3

2

1

10

9

8

7

6

5

4

3

2

1

10

9

8

7

6

5

4

3

2

1

10

9

8

7

6

5

4

3

2

1

10

9

8

7

6

5

4

3

2

1

10

9

8

7

6

5

4

3

2

1

10

9

8

7

6

5

4

3

2

1

10

9

8

7

6

5

4

3

2

1

10

9

8

7

6

5

4

3

2

1

10

9

8

7

6

5

4

3

2

1

10

9

8

7

6

5

4

3

2

1

10

9

8

7

6

5

4

3

2

1

10

9

8

7

6

5

4

3

2

1

10

9

8

7

6

5

4

3

2

1

10

9

8

7

6

5

4

3

2

1

10

9

8

7

6

5

4

3

2

1

10

9

8

7

6

5

4

3

2

1

10

9

8

7

6

5

4

3

2

1

10

9

8

7

6

5

4

3

2

1

10

9

8

7

6

5

4

3

2

1

10

9

8

7

6

5

4

3

2

1

10

9

8

7

6

5

4

3

2

1

10

9

8

7

6

5

4

3

2

1

10

9

8

7

6

5

4

3

2

1

10

9

8

7

6

5

4

3

2

1

10

9

8

7

6

5

4

3

2

1

10

9

8

7

6

5

4

3

2

1

10

9

8

7

6

5

4

3

2

1

10

9

8

7

6

5

4

3

2

1

10

9

8

7

6

5

4

3

2

1

10

9

8

7

6

5

4

3

2

1

10

9

8

7

6

5

4

3

2

1

10

9

8

7

6

5

4

3

2

1

10

9

8

7

6

5

4

3

2

1

10

9

8

7

6

5

4

3

2

1

10

9

8

7

6

5

4

3

2

1

10

9

8

7

6

5

4

3

2

1

10

9

8

7

6

5

4

3

2

1

10

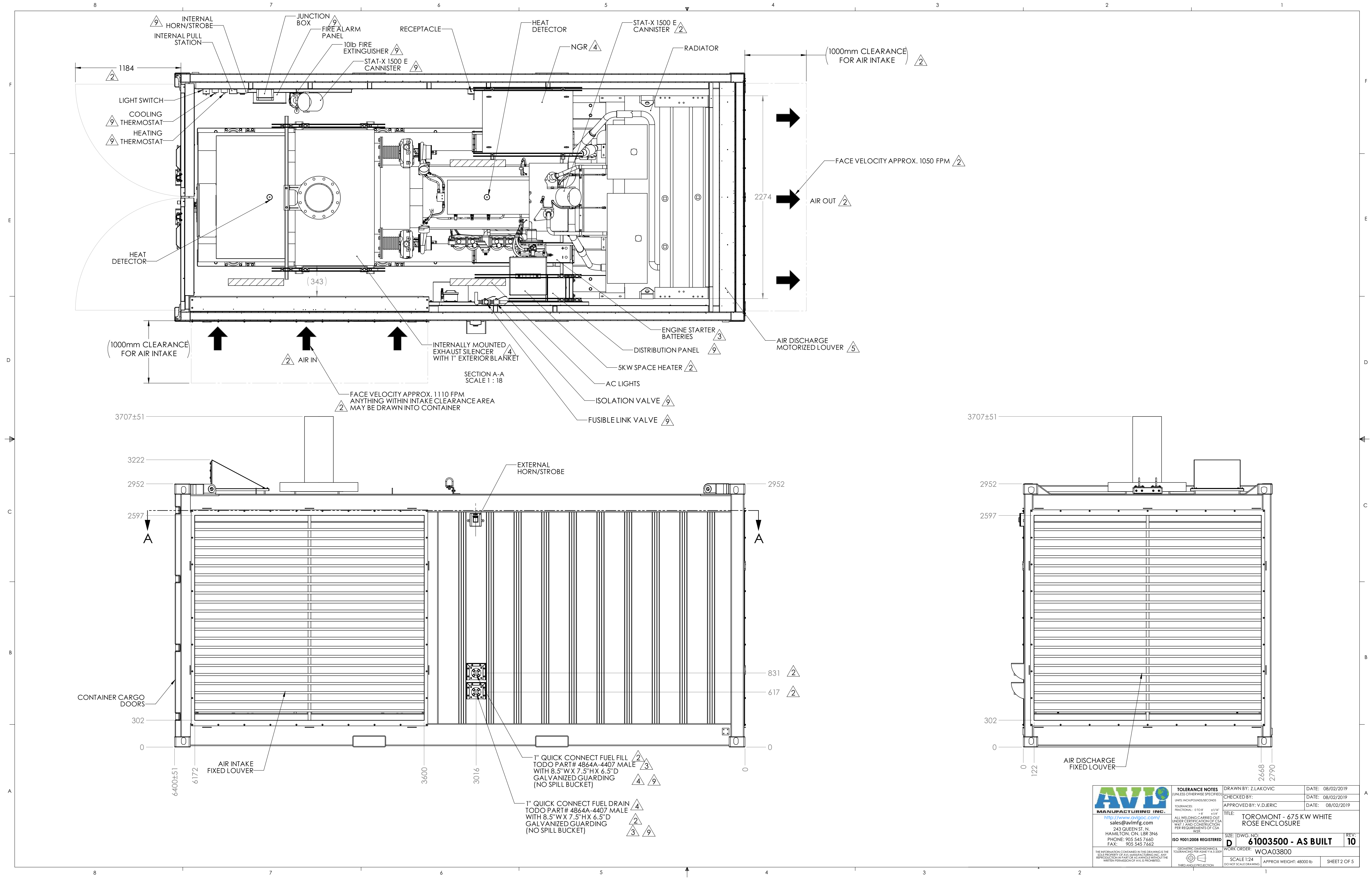
9

8

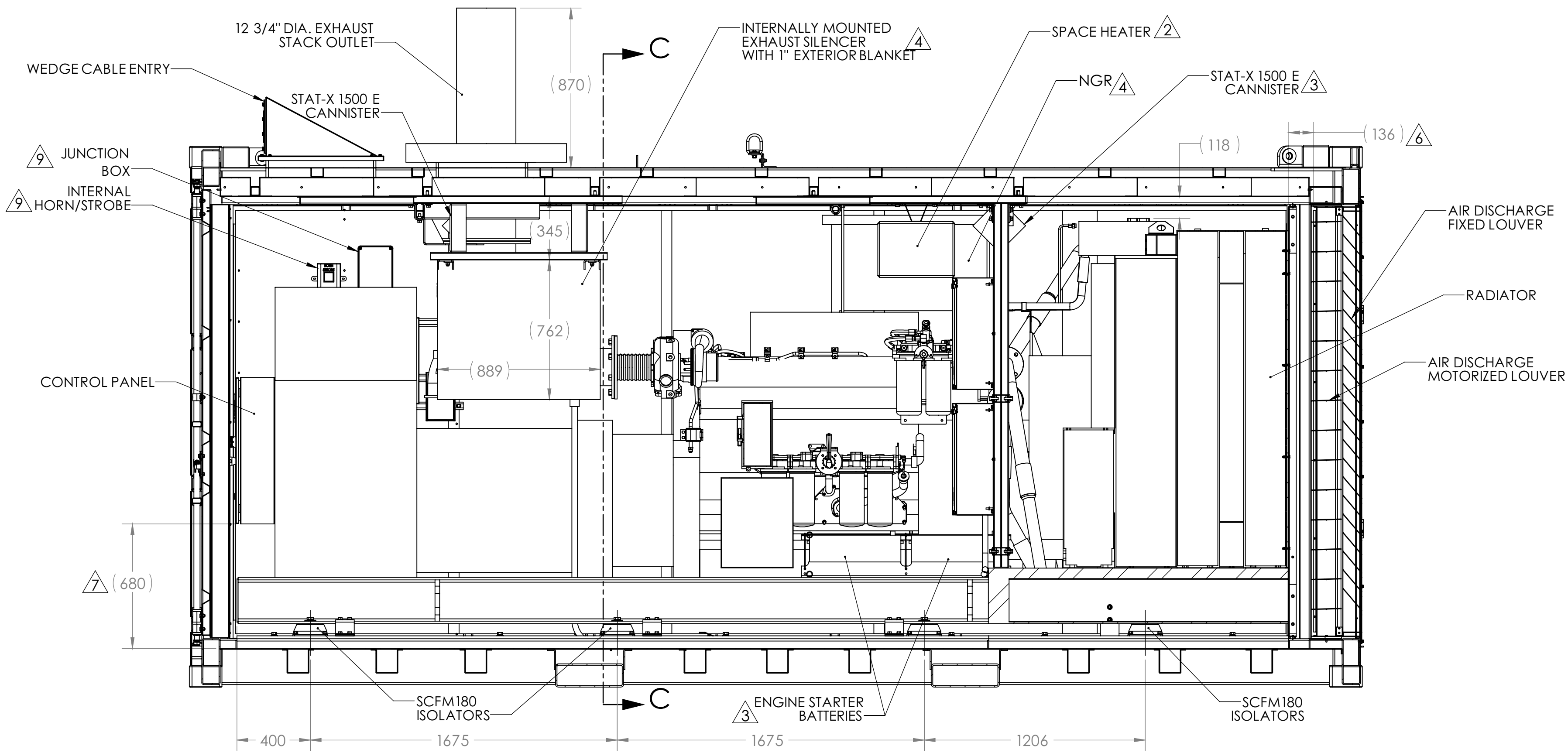
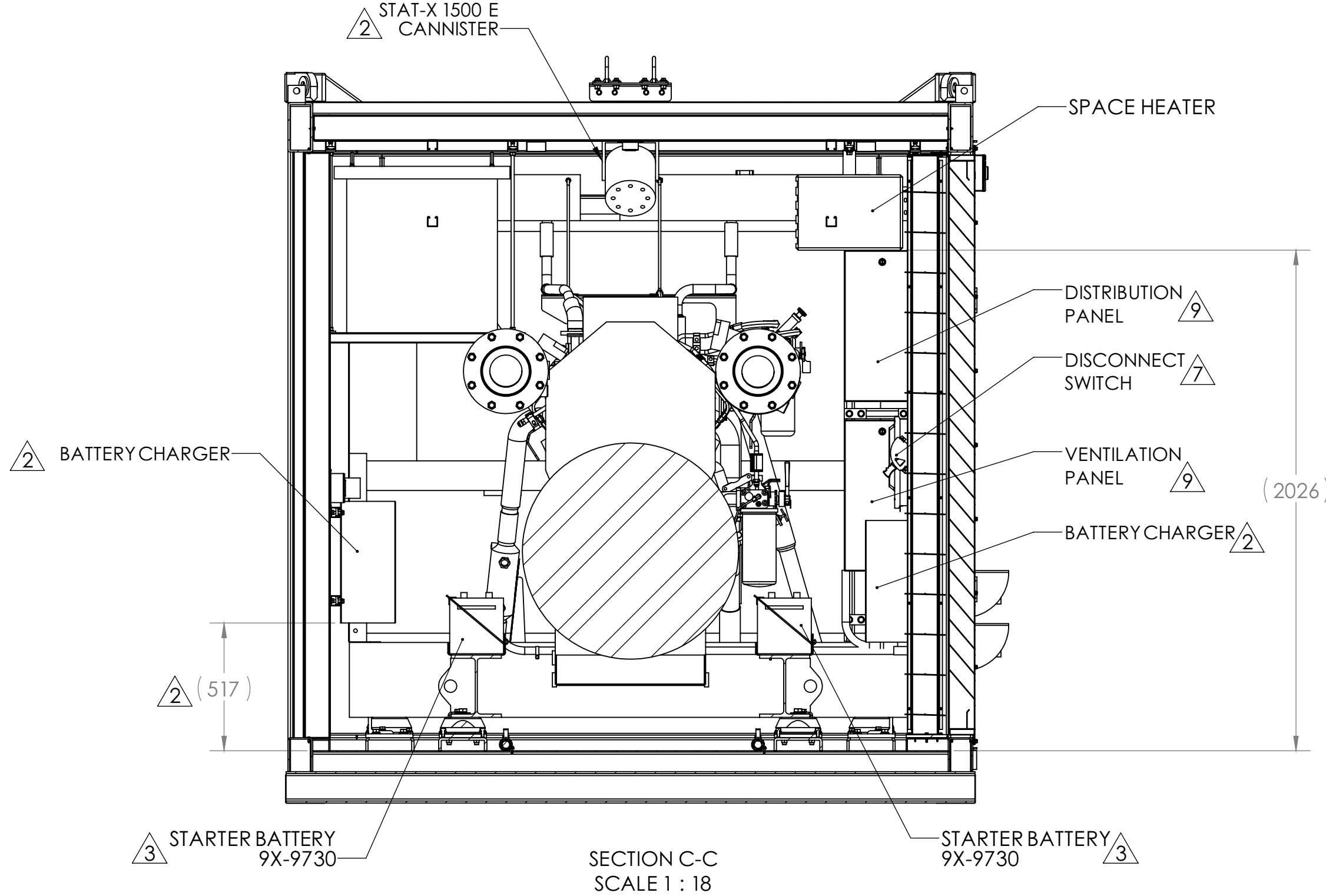
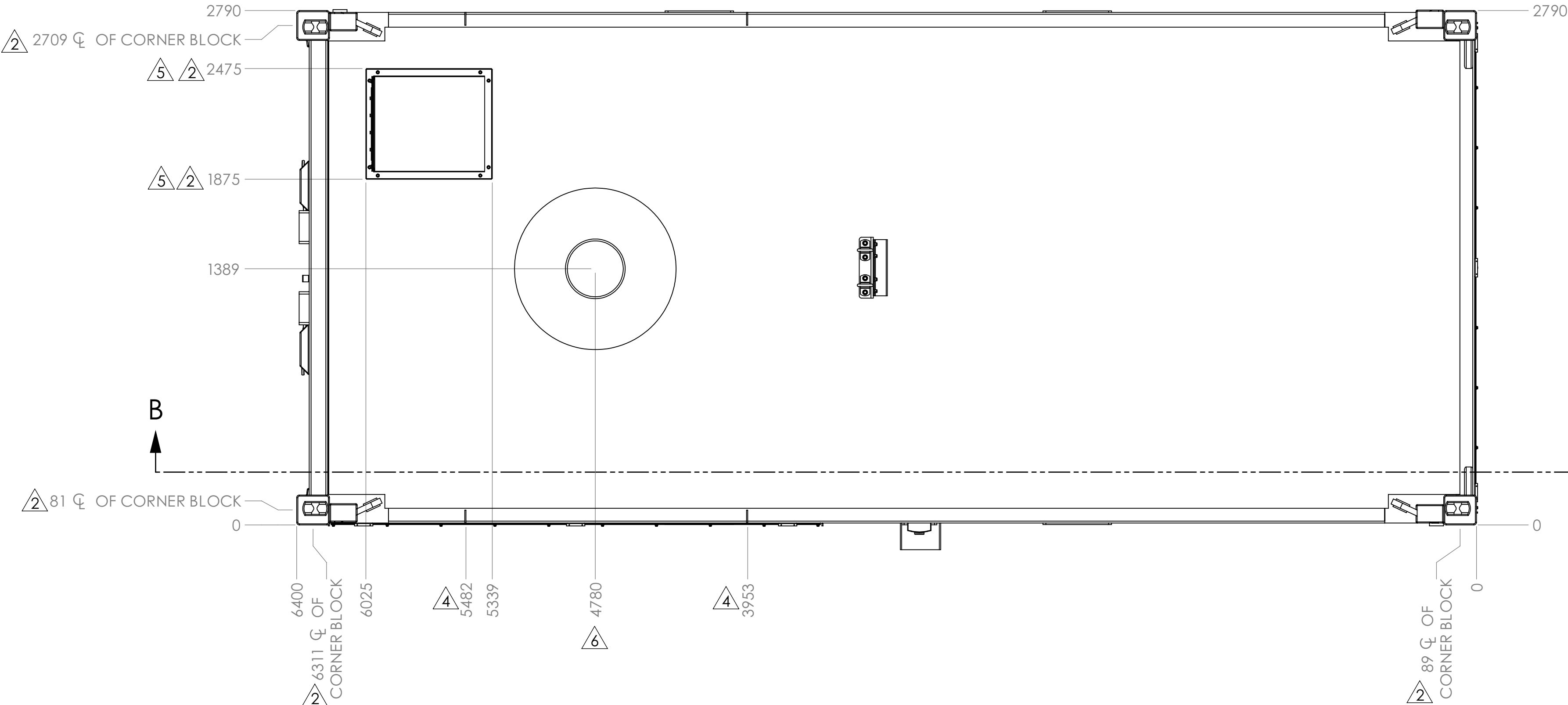
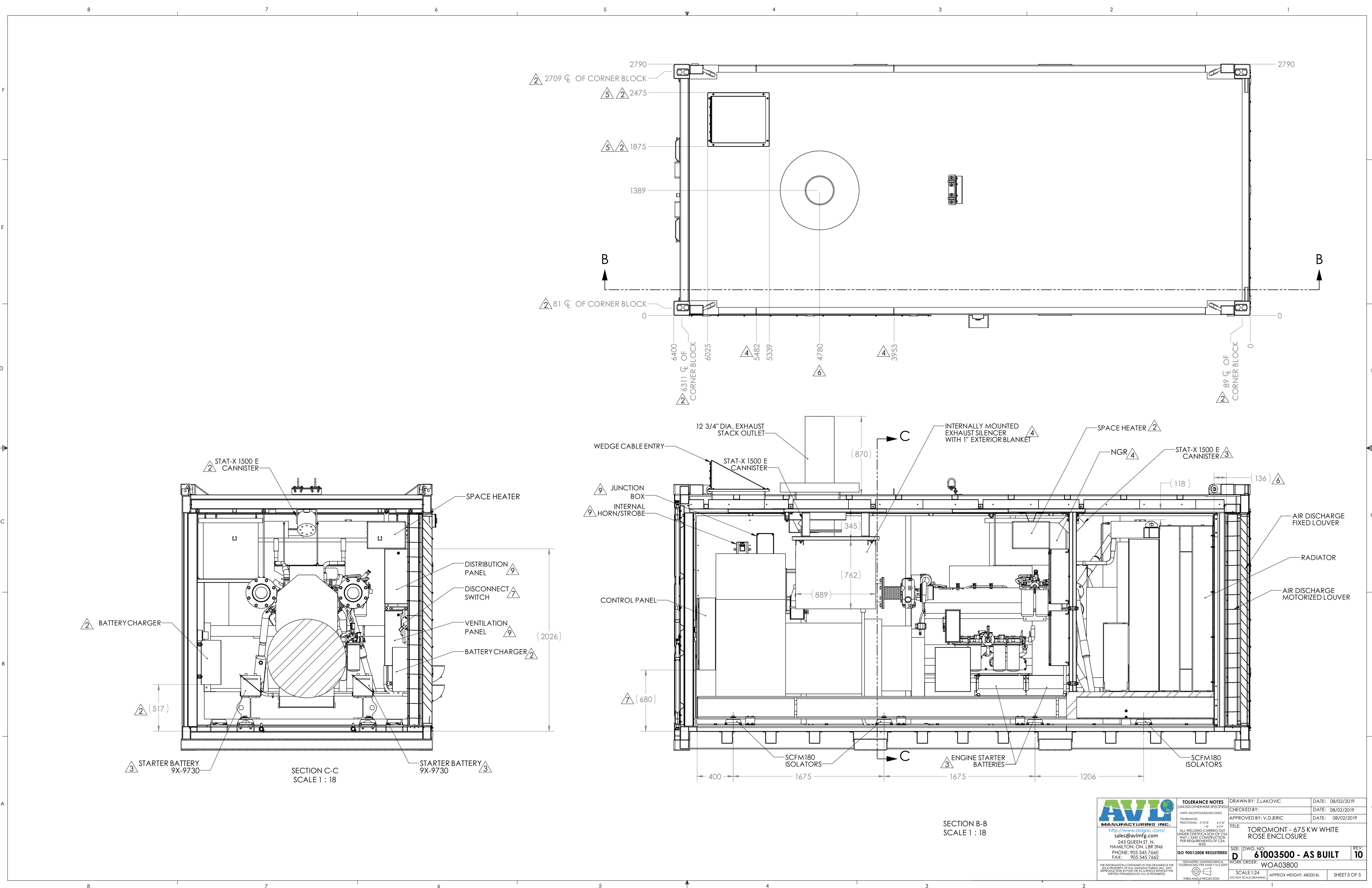
7



6

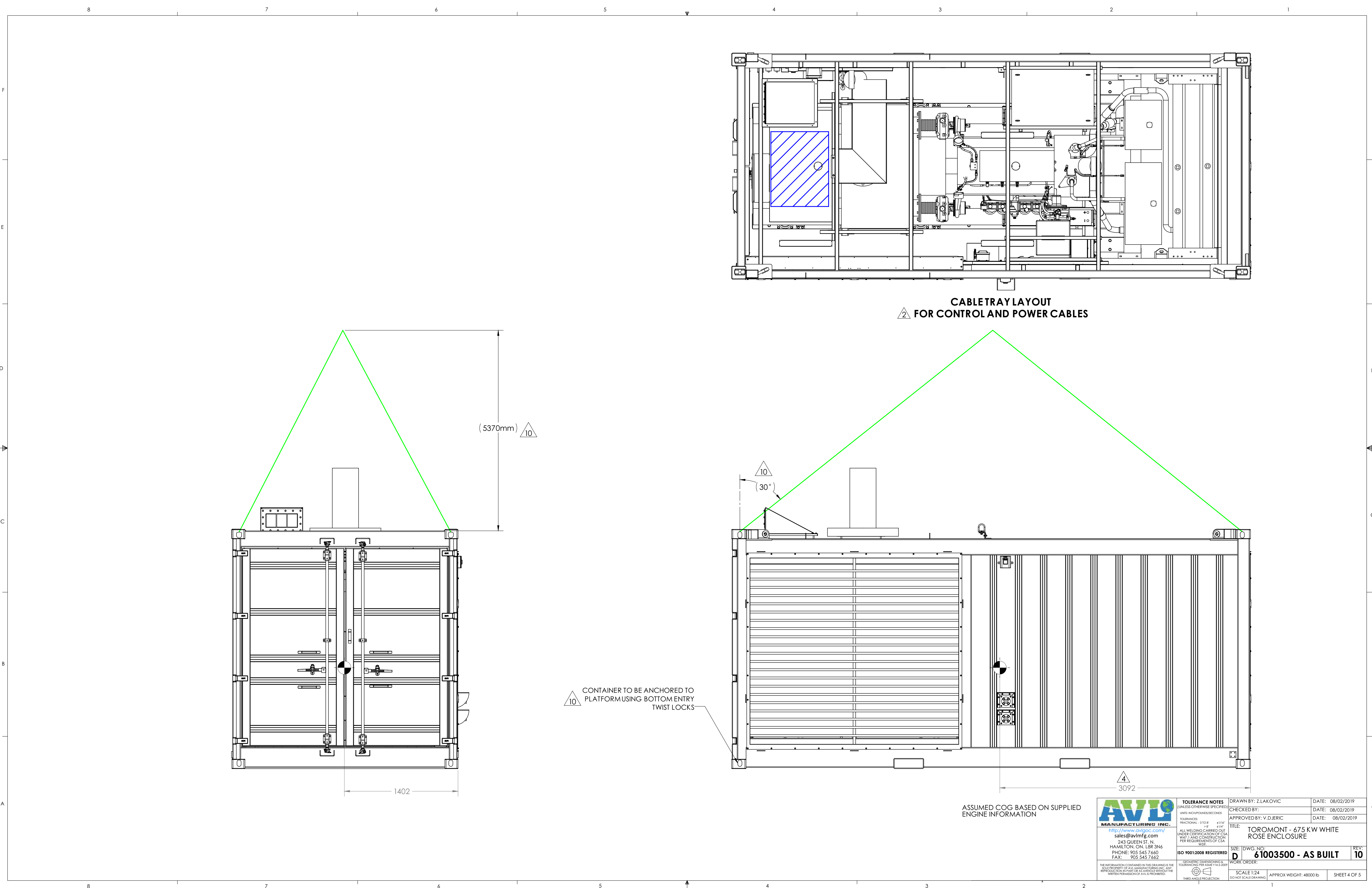
5



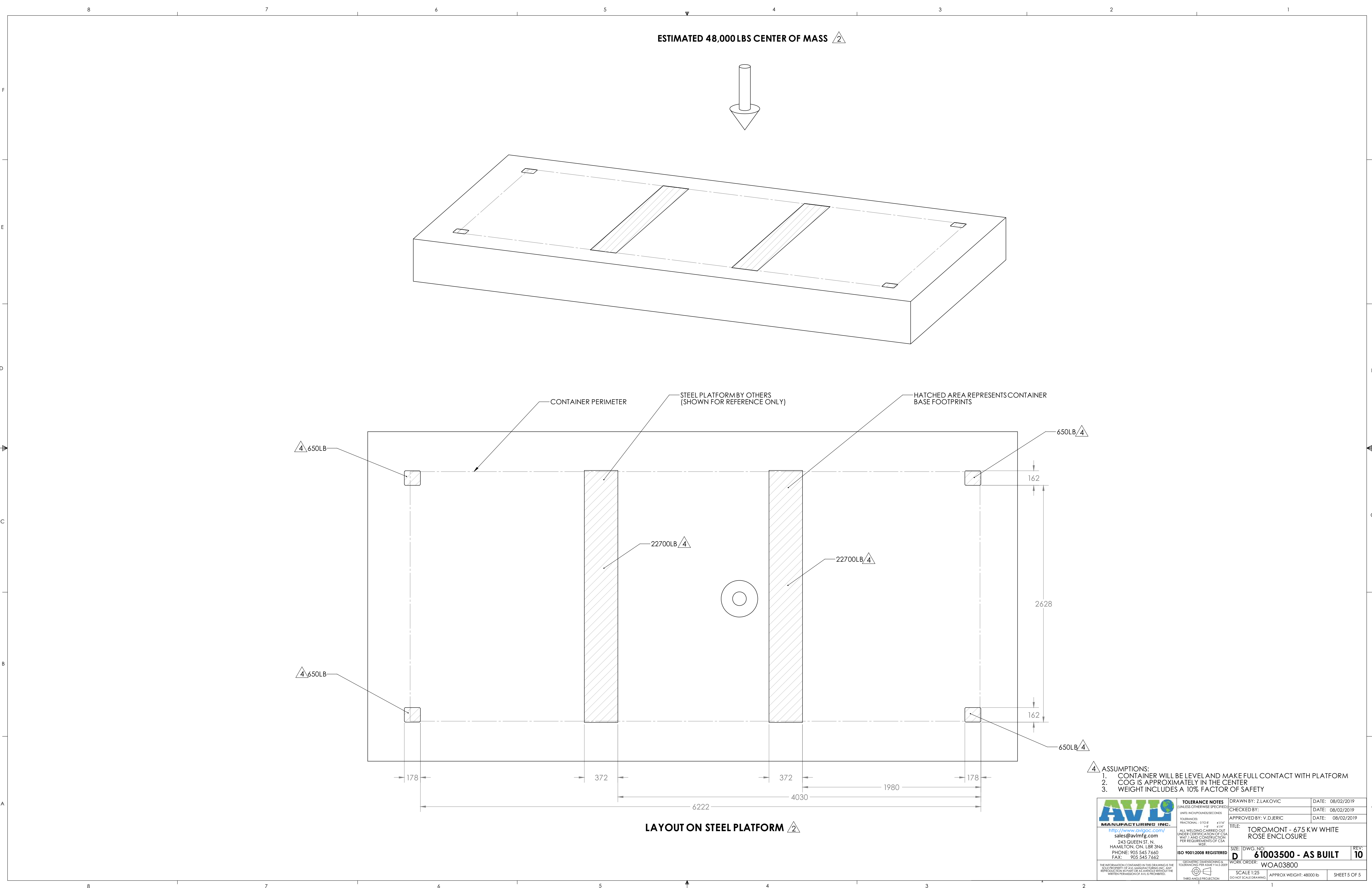
 AVILO MANUFACTURING INC. http://www.avilomfg.com/ sales@avilomfg.com 243 QUEEN ST. N. HAMILTON, ON L8R 3N6 PHONE: 905 545 7660 FAX: 905 545 7662	TOLERANCE NOTES (UNLESS OTHERWISE SPECIFIED) UNITS: INCH/POUNDS/SECONDS TOLERANCES: FRACTIONAL: 0/10 8" 1/16" DECIMAL: .015" .031" ALL WELDING CARRIED OUT UNDER CERTIFICATION OF CSA W47 J AND CONSTRUCTION PER REQUIREMENTS OF CSA W47	DRAWN BY: Z.LAKOVIC DATE: 08/02/2019
	CHECKED BY: APPROVED BY: V.DJERIC	DATE: 08/02/2019 DATE: 08/02/2019
	TITLE: TOROMONT - 675 KW WHITE ROSE ENCLOSURE	REV: 10
	ISO 9001:2008 REGISTERED GEOMETRIC DIMENSIONING & TOLERANCING PER ASME Y14.5-2009 THIRD ANGLE PROJECTION	SIZE: DWG. NO: 61003500 - AS BUILT WORK ORDER: WOA03800 SCALE: 1:24 APPROX WEIGHT: 48000 lb SHEET 2 OF 5



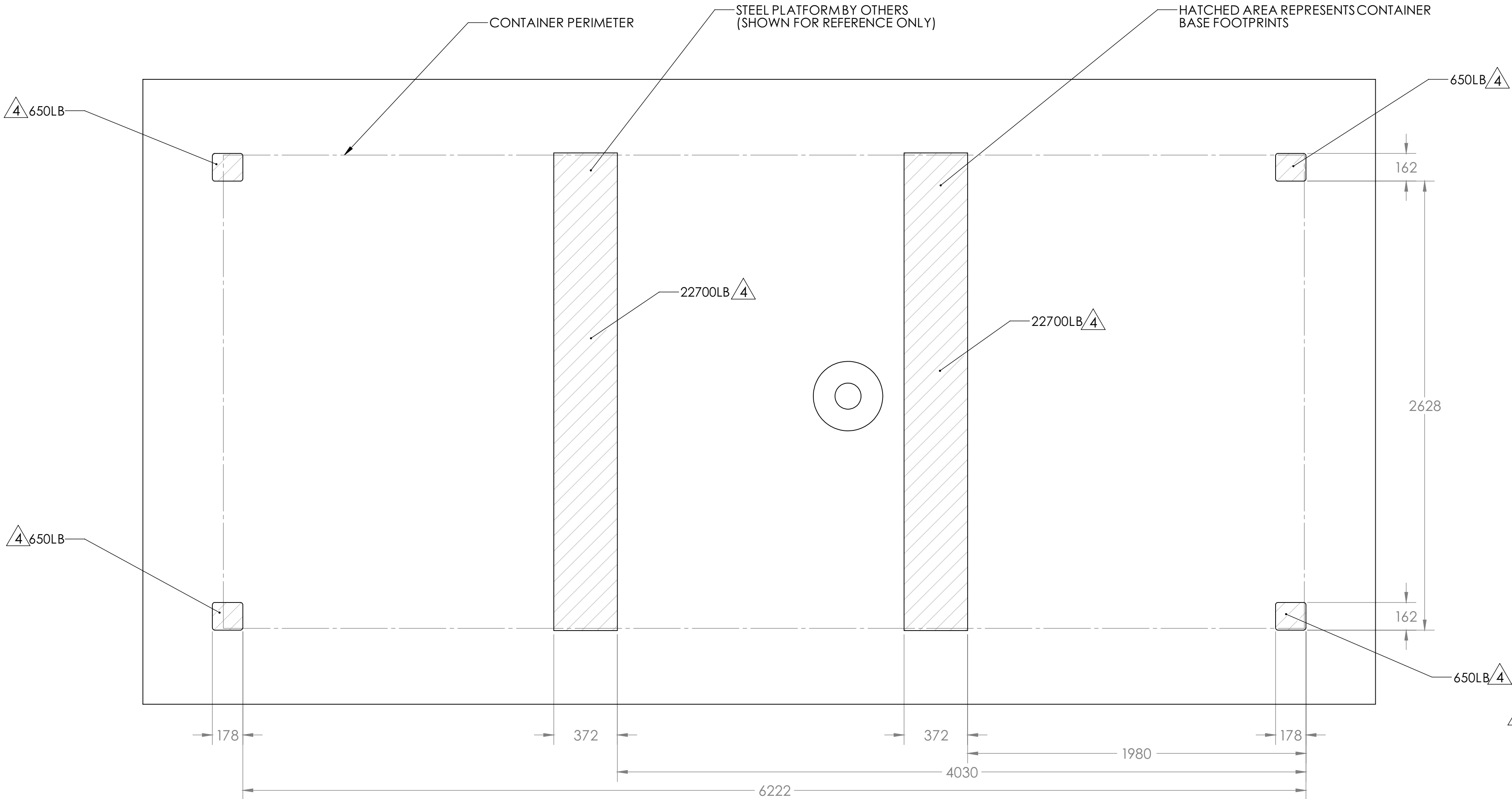
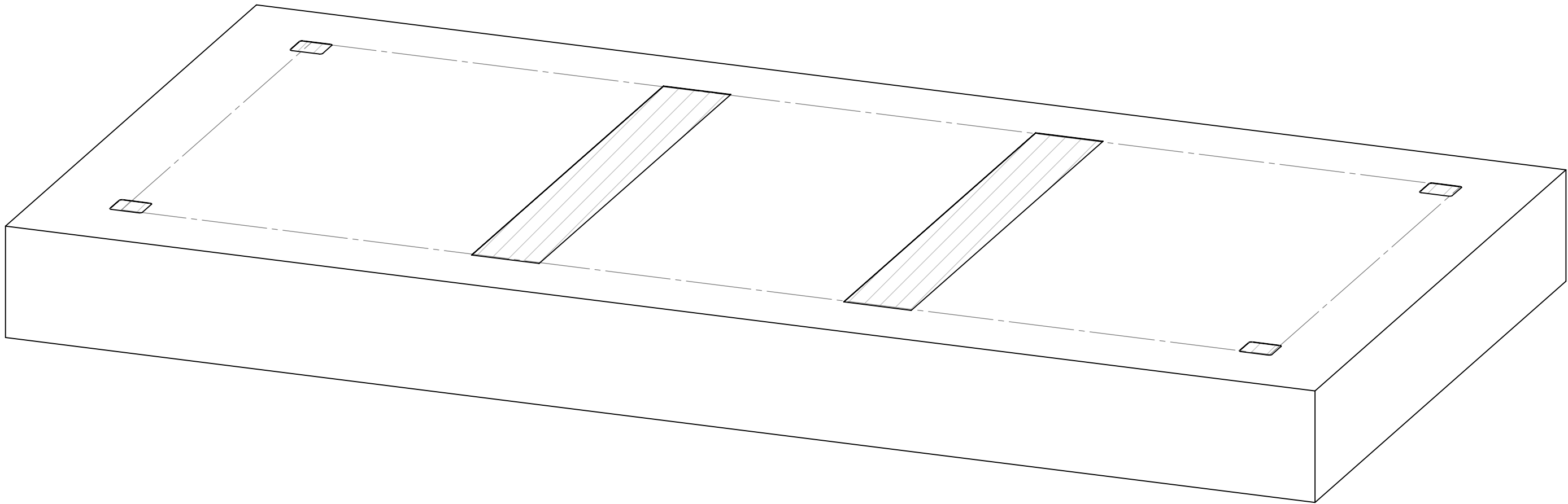
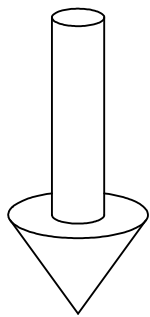
 AVI MANUFACTURING INC. www.avimfg.com/ sales@avimfg.com 243 QUEEN ST. N. HAMILTON, ON. L8R 3N6 PHONE: 905 545 7660 FAX: 905 545 7662	 THIRD ANGLE PROJECTION	TOLERANCE NOTES (UNLESS OTHERWISE SPECIFIED) UNITS: INCH/POUNDS/SECONDS TOLERANCES: FRACTIONAL: 0/10 8 1/16 DECIMAL: .010 .015 ALL WELDING CARRIED OUT UNDER CERTIFICATION OF CSA W47 J1 AND CONSTRUCTION PER REQUIREMENTS OF CSA W47	DRAWN BY: Z.LAKOVIC	DATE: 08/02/2019
		CHECKED BY:	DATE: 08/02/2019	
		APPROVED BY: V.DJERIC	DATE: 08/02/2019	
		TITLE: TOROMONT - 675 KW WHITE ROSE ENCLOSURE		
		SIZE: DWG. NO.: p 61003500 - AS BUILT		REV: 10
		WORK ORDER: WOA03800		
		SCALE 1:24 DO NOT SCALE DRAWING		APPROX WEIGHT: 48000 LB



AVLO MANUFACTURING INC. http://www.avloinc.com sales@avloinc.com 243 QUEEN ST. N. HAMILTON, ON. L8R 3N6 PHONE: 905 545 7660 FAX: 905 545 7662	TOLERANCE NOTES (UNLESS OTHERWISE SPECIFIED) UNITS: INCH/POUNDS/SECONDS TOLERANCES: FRACTIONAL: 0/10 8" ±1/16" DECIMAL: .0005 ±.001" ALL WELDING CARRIED OUT UNDER CERTIFICATION OF CSA W47.1 AND CONSTRUCTION PER REQUIREMENTS OF CSA W47.1	DRAWN BY: Z.LAKOVIC	DATE: 08/02/2019
		CHECKED BY:	DATE: 08/02/2019
		APPROVED BY: V.DJERIC	DATE: 08/02/2019
		TITLE: TOROMONT - 675 KW WHITE ROSE ENCLOSURE	
THE INFORMATION CONTAINED IN THIS DRAWING IS THE SOLE PROPERTY OF AVLO MANUFACTURING INC. ANY REPRODUCTION IN PART OR AS A WHOLE WITHOUT THE WRITTEN PERMISSION OF AVLO IS PROHIBITED.	ISO 9001:2008 REGISTERED GEOMETRIC DIMENSIONING & TOLERANCING PER ASME Y14.5-2009 THIRD ANGLE PROJECTION	SIZE: DWG. NO: 61003500 - AS BUILT REV: 10	
		WORK ORDER:	
		SCALE 1:24	APPROX WEIGHT: 48000 lb
		DO NOT SCALE DRAWING	SHEET 4 OF 5


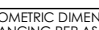


ESTIMATED 48,000LBS CENTER OF MASS 



LAYOUT ON STEEL PLATFORM 

-  ASSUMPTIONS:
1. CONTAINER WILL BE LEVEL AND MAKE FULL CONTACT WITH PLATFORM
 2. COG IS APPROXIMATELY IN THE CENTER
 3. WEIGHT INCLUDES A 10% FACTOR OF SAFETY

 MANUFACTURING INC. http://www.avlogc.com/ sales@avlmfg.com 243 QUEEN ST. N. HAMILTON, ON. L8R 3N6 PHONE: 905 545 7660 FAX: 905 545 7662	TOLERANCE NOTES (UNLESS OTHERWISE SPECIFIED) UNITS: INCH/POUNDS/SECONDS TOLERANCES: FRACTIONAL: 0 TO 8" ±1/16" DECIMAL: 0.001 TO 0.005 ±0.001 ALL WELDING CARRIED OUT UNDER CERTIFICATION OF CSA W47.1 AND CONSTRUCTION PER REQUIREMENTS OF CSA W47.1		DRAWN BY: Z.LAKOVIC	DATE: 08/02/2019	
			CHECKED BY:	DATE: 08/02/2019	
			APPROVED BY: V.D.JERIC	DATE: 08/02/2019	
			TITLE: TOROMONT - 675 KW WHITE ROSE ENCLOSURE		
THE INFORMATION CONTAINED IN THIS DRAWING IS THE SOLE PROPERTY OF AVLO MANUFACTURING INC. ANY REPRODUCTION IN PART OR AS A WHOLE WITHOUT THE WRITTEN PERMISSION OF AVLO IS PROHIBITED.	ISO 9001:2008 REGISTERED		SIZE: DWG. NO: 61003500 - AS BUILT		REV: 10
	GEOMETRIC DIMENSIONING & TOLERANCING PER ASME Y14.5-2009		WORK ORDER: WOA03800		
	THIRD ANGLE PROJECTION		SCALE: 1:25		
			DO NOT SCALE DRAWING		
APPROX WEIGHT: 48000 lb			SHEET 5 OF 5		