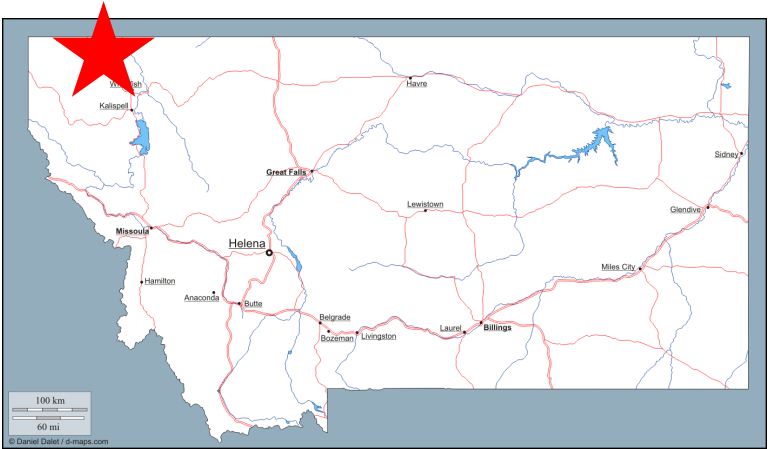

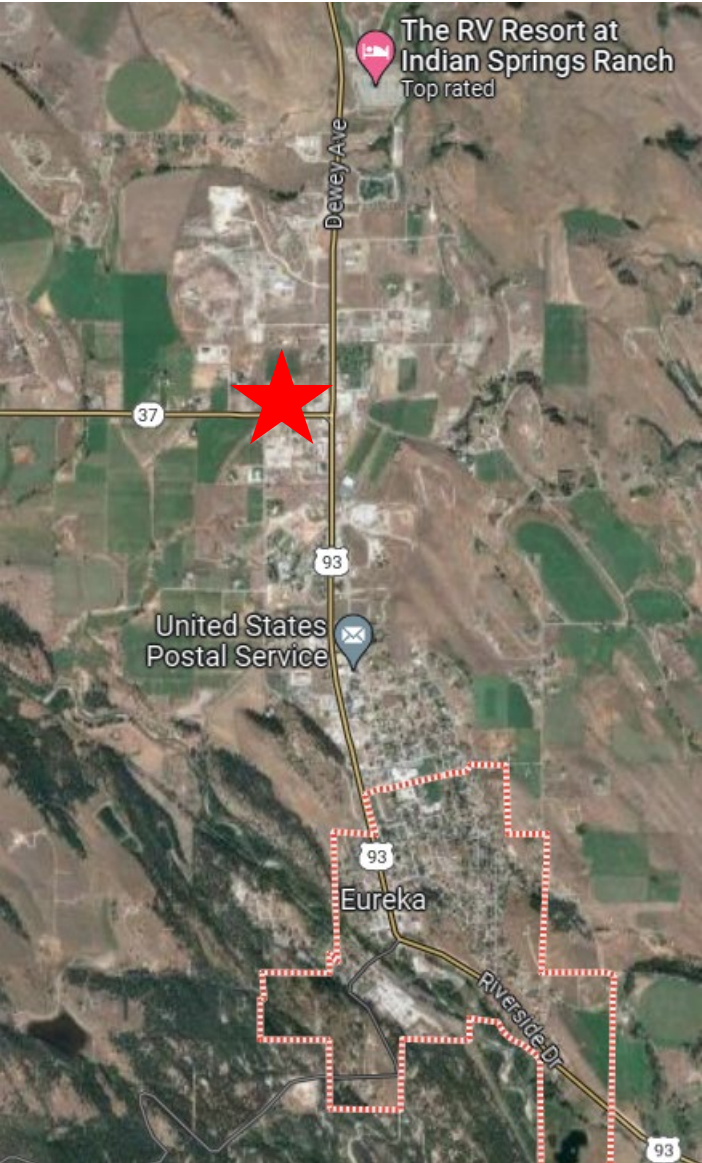


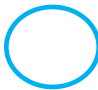


EXCESS LAND SALE
FAP 137-B(1), W325-B01-000, Eureka-Rexford, Parcel: Old Eureka Maintenance Shop Site



 = Excess Land Sale Location



-  = Excess Land Sale Property Boundary (approximate – 3.10 Acres)
-  = Utility Easement (approximate – 15 feet in width running against the western boundary line)
-  = One large metal structure (3,178 SF service garage)