

BILL OF MATERIALS

MK	QTY.	DESCRIPTION	LENGTH	TOTAL	LBS.
01	2	WIDE FLANGE BEAM, W12 x 40	252"	86'-11 1/16"	3480
02	2	WIDE FLANGE BEAM, W12 x 40	147 11/16"	-	-
03	1	WIDE FLANGE BEAM, W12 x 40	243 11/16"	-	-
04	10	CHANNEL, C8 x 11.5 (COPE BOTH END)	68 1/4"	122'-11"	1415
05	10	CHANNEL, C8 x 11.5 (COPE BOTH END)	79 1/4"	-	-
06	4	FLATBAR 8" x 1" (LIFTING LUG)	16"	5'-4"	130
07	1	1/4" CHECKER PLATE (6' x 24' SHEET)	-	126 S.F.	1418
08	1	1/4" CHECKER PLATE (8' x 24' SHEET)	-	147 S.F.	1654
09	AR	ANGLE, 2 x 2 x 1/4 (COPE BOTH END)	732"	61'	195
10	1	H.S.S. 8 x 8 x 1/4 (SUMP)	14 1/4"	1'-2 1/4"	20
11	2	FLATBAR 1 x 1/4 (SUMP)	14 1/4"	2'-4 1/2"	5
12	1	GRATING W19-4 (1 1/4" x 3/16")		1 S.F.	9
13	1	A106BXH PIPE 3/4 NPT	9 5/8"	0'-9 5/8"	2
14	4	1/2" THICK FLATBAR (SUPPORT BRACKET)	-	-	80
(APPROX.) TOTAL WEIGHT					8408

Canadian Nuclear Laboratories
Laboratoires Nucléaires Canadiens☒ ACCEPTED AS NOTED ☐ ACCEPTED ☐ NOT ACCEPTED

Signature

Representing

D.F.

Date

Jan 12/2017

CAUTION:

Acceptance by CNL is subject to the terms and conditions of the purchase order and in no way relieves Contractor from its responsibility thereunder. Without in anyway limiting the generality of the foregoing, CNL specifically advises that dimensions, tolerance, location and fit are not reviewed by CNL prior to acceptance.

FINAL DWGS TO HAVE
SIGNED ENG STAMP.

GENERAL NOTES:

- THIS DRAWING IS NOT TO BE USED FOR CONSTRUCTION UNLESS STAMPED 'ISSUED FOR CONSTRUCTION'.
- ALL DIMENSIONS IN INCHES UNLESS OTHERWISE NOTED.
- MAIN MEMBERS TO BE FULL PENETRATION WELDS, ALL OTHER WELDS TO BE 1/4" FILLET UNLESS OTHERWISE NOTED.
- ENSURE ALL MEMBERS ARE FLUSH WITH TOP OF SKID.
- GRIND FLUSH ALL WELDS ON TOP AND BOTTOM OF SKID.
- DRILL 7/8" BOLT DOWN HOLE THROUGH BOTTOM FLANGE ONLY (TYP. 3 EACH SIDE).
- SKID TO BE PAINTED AS PER NWE SPEC: (1) COAT PRIMER, (2) COATS WARM GREY.
- SHOP TO CONFIRM BOLTING DIMENSIONS AND SIZE PRIOR TO INSTALLING EQUIPMENT.
- SURFACE PREPARATION (SSPC-SP-3).
- UNDERSIDE OF CHK. PL. PORTION OF SKID TO BE SPRAYED WITH 3" FIRE RETARDANT URETHANE FOAM INSULATION.
- BEAM CSA G40.21-50W, CHANNEL & ANGLE CSA G40.21-44W, CHK. PLATE MILD STEEL, LIFTING LUGS CSA G40.21-50W.
- 100% MPI FOR LIFTING LUGS.

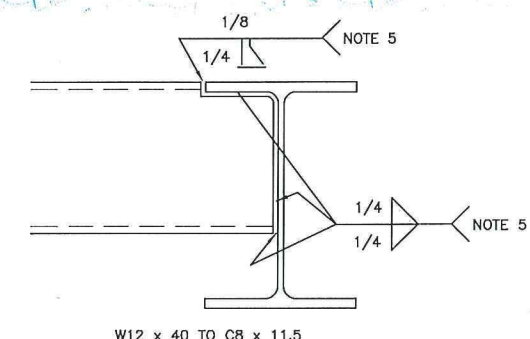
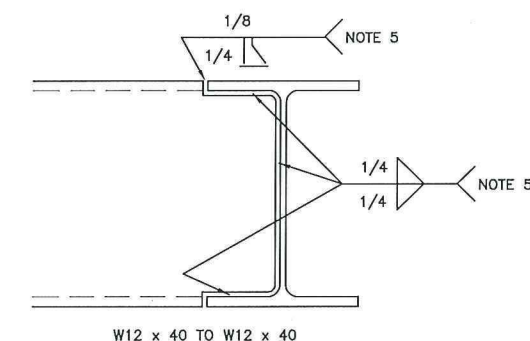
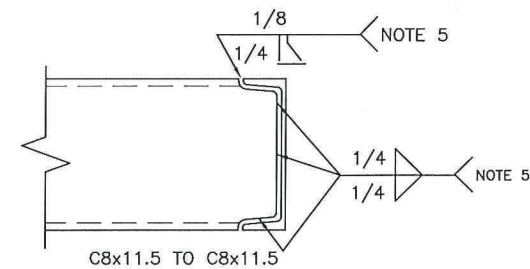
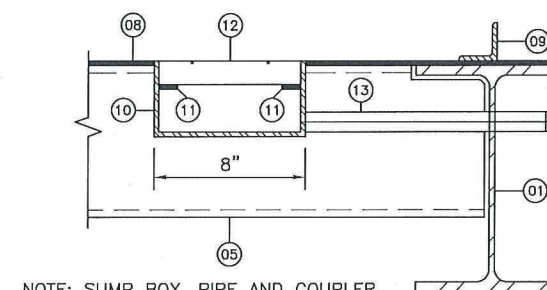
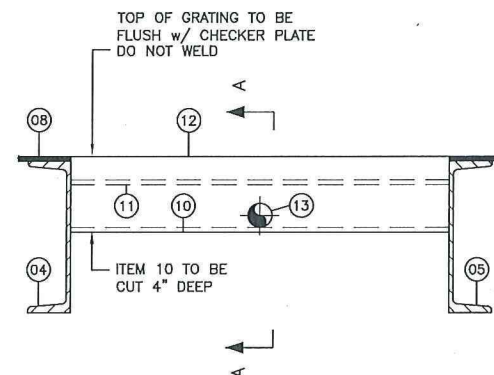
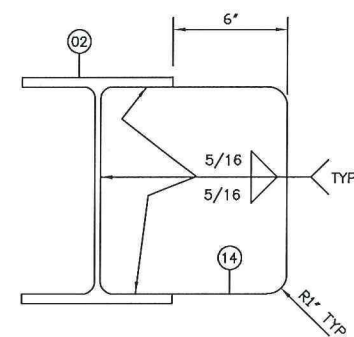
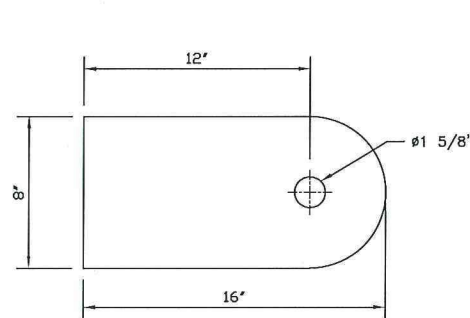
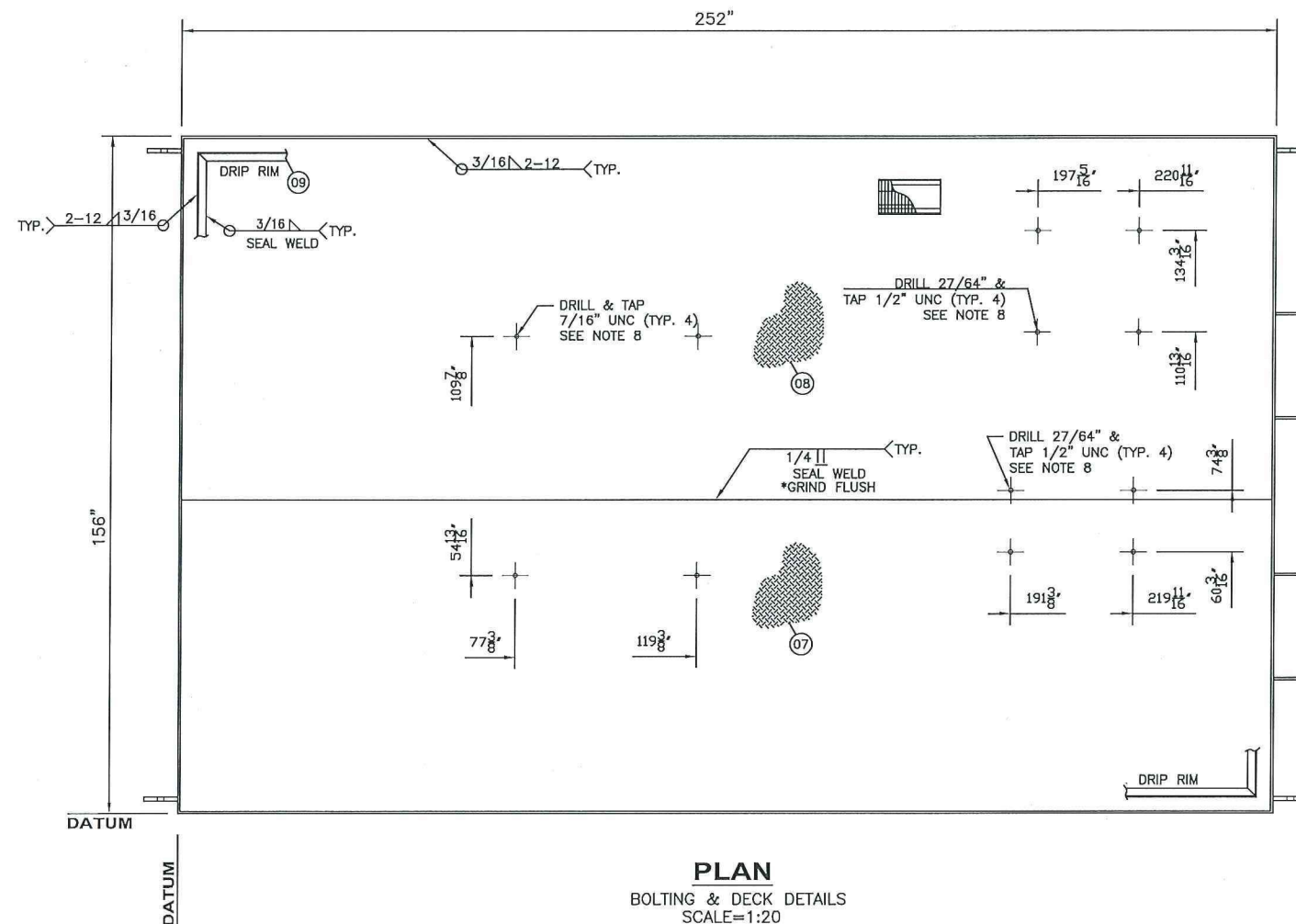
REV	DESCRIPTION	DATE	DWN	CHK
0	ISSUED FOR CONSTRUCTION	2017-01-04	HAY	SK


NORTHWEST
EQUIPMENT LTD.
A SWIFT INDUSTRY COMPANY

STRUCTURAL SKID

BREATHING AIR PACKAGE

CLIENT	CANADIAN NUCLEAR LABORATORIES LTD	SCALE	1:20
LOCATION	CHALK RIVER, ON	DWN BY	HAY
LSD	N/A	DATE	2016-08-18
JOB	NW1986-SK	DWG	NW1986SK
SHEET	1 / 2	REV	0




Canadian Nuclear Laboratories / **Laboratoires Nucléaires Canadiens**

☒ ACCEPTED AS NOTED
☐ ACCEPTED
☐ NOT ACCEPTED

Signature	Representing	Date
<i>[Signature]</i>	D.F.	Jan 17/2017

CAUTION:
 Acceptance by CNL is subject to the terms and conditions of the purchase order and in no way relieves Contractor from its responsibility thereunder. Without in anyway limiting the generality of the foregoing, CNL specifically advises that dimensions, tolerance, location and fit are not reviewed by CNL prior to acceptance.

FINAL DRAWINGS TO HAVE SIGNED ENG. STAMP.

GENERAL NOTES:

1. THIS DRAWING IS NOT TO BE USED FOR CONSTRUCTION UNLESS STAMPED 'ISSUED FOR CONSTRUCTION'.
2. ALL DIMENSIONS IN INCHES UNLESS OTHERWISE NOTED.
3. MAIN MEMBERS TO BE FULL PENETRATION WELDS, ALL OTHER WELDS TO BE 1/4" FILLET UNLESS OTHERWISE NOTED.
4. ENSURE ALL MEMBERS ARE FLUSH WITH TOP OF SKID.
5. GRIND FLUSH ALL WELDS ON TOP AND BOTTOM OF SKID.
6. DRILL 7/8" BOLT DOWN HOLE THROUGH BOTTOM FLANGE ONLY (TYP. 4 EACH SIDE).
7. SKID TO BE PAINTED AS PER NWE SPEC: (1) COAT PRIMER, (2) COATS BLACK.
8. SHOP TO CONFIRM BOLTING DIMENSIONS AND SIZE PRIOR TO INSTALLING EQUIPMENT.
9. SURFACE PREPARATION (SSPC-SP-3).
10. UNDERSIDE OF CHK. PL. PORTION OF SKID TO BE SPRAYED WITH 3" FIRE RETARDANT URETHANE FOAM INSULATION.
11. BEAM CSA G40.21-50W, CHANNEL & ANGLE CSA G40.21-44W, CHK. PLATE MILD STEEL, LIFTING LUGS CSA G40.21-50W.
12. 100% MPI FOR LIFTING LUGS.

REV	DESCRIPTION	DATE	DWN	CHK
0	ISSUED FOR CONSTRUCTION	2017-01-04	HAY	SK

NORTHWEST
EQUIPMENT LTD.

A SWIFT INDUSTRY COMPANY

STRUCTURAL SKID BREATHING AIR PACKAGE			
CLIENT	CANADIAN NUCLEAR LABORATORIES LTD		SCALE AS SHOWN
LOCATION	CHALK RIVER, ON		DWN BY HAY
LSD	N/A PO# 480884		DATE 2017-01-04
JOB	DWG	SHEET	REV
NW1986-SK	NW1986SK	2 / 2	0