
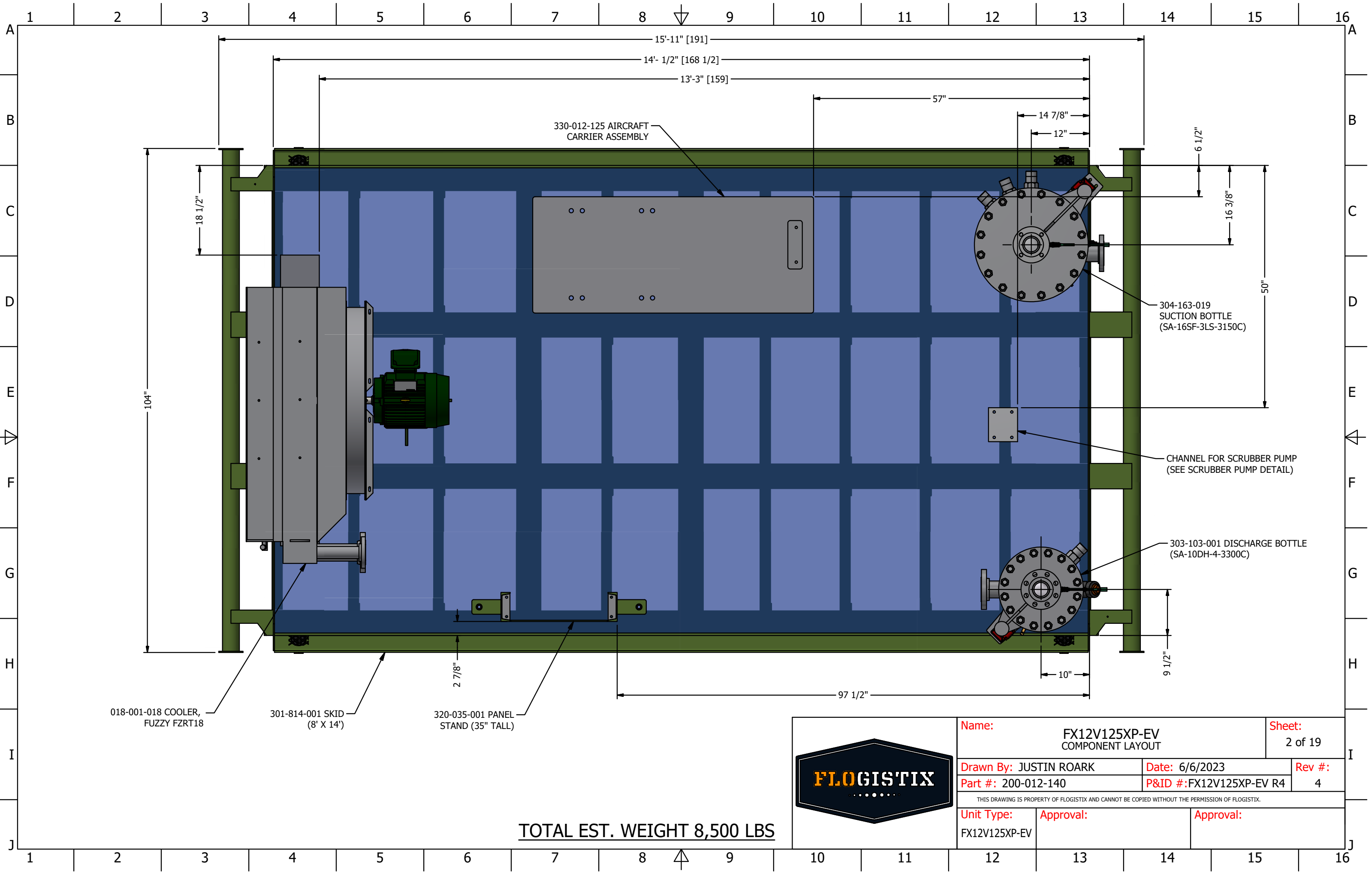


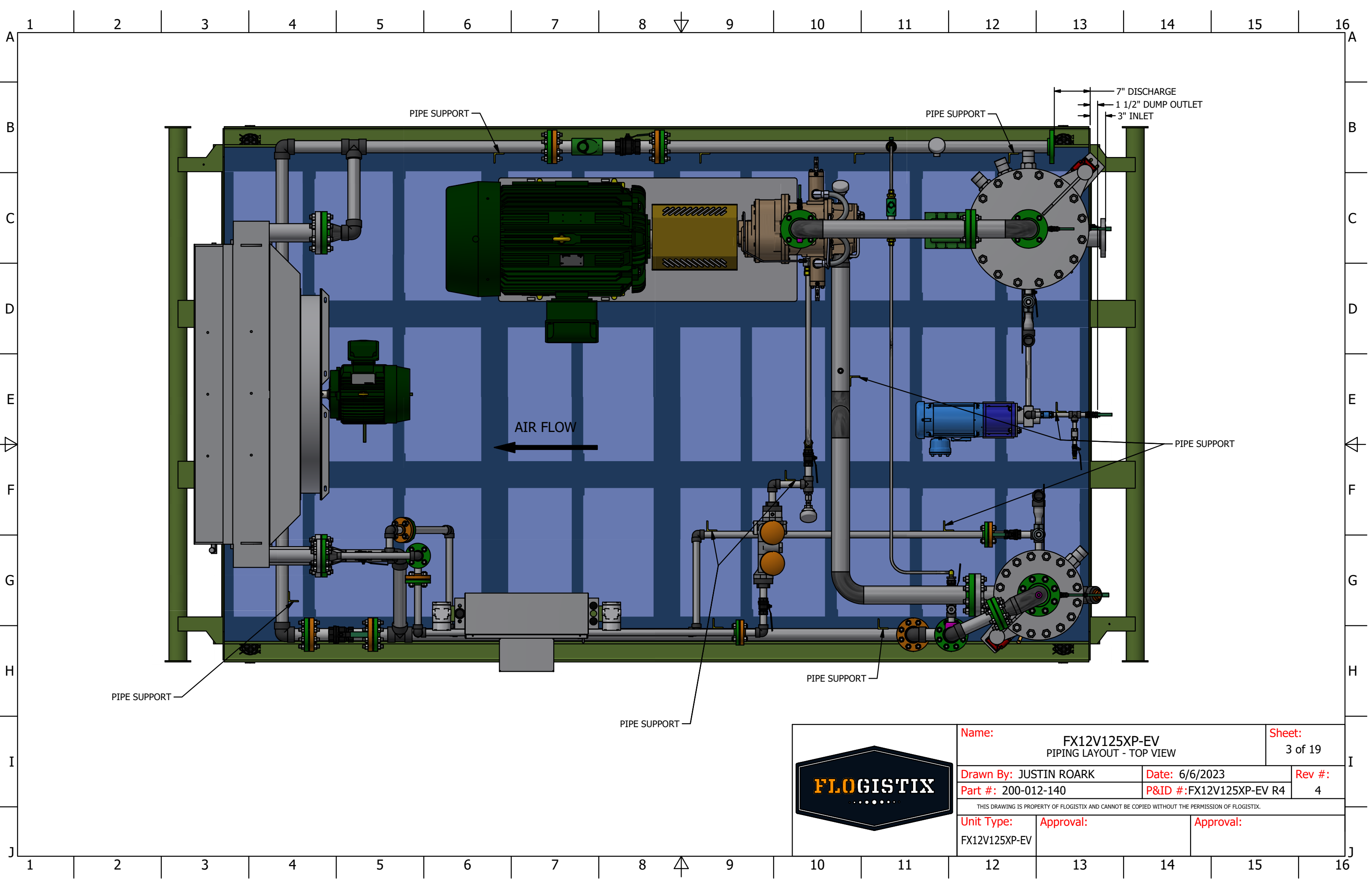
	1	2	3	4	5	6	7	8	▽	9	10	11	12	13	14	15	16		
A	CHANGE HISTORY																	A	
	CHG	DESCRIPTION												DATE		DESIGNER			
	-	NEW DESIGN FX12V125XP-EV, XP ELECTRIC MOTORS, SCRUBBER PUMP												6/24/2022		K. GAMBLIN			
	1	CHANGED DISCHARGE BOTTLE PSV TO BE 250 PSI PER CUSTOMER CHANGE ORDER												10/7/2022		J. ROARK			
	2	CHANGED SKID TO 8 X 14', SWAPPED COOLER TO 42VVF, UPDATED OIL PIPING, CHANGED BPR FROM A KIMRAY AAR5 TO A TAYLOR 7200												2/3/2023		J. ROARK			
B	3	UPDATED VESSELS, ADDED SUCTION SPOOL, UPDATED PANEL STAND												3/5/2023		J. ROARK			
	4	UPDATED COOLER, UPDATED PANEL STAND AND ADDED DP TRANSMITTER												6/6/2023		J. ROARK		B	
C																		C	
D																		D	
E																		E	
▷																			◁
F																		F	
G																		G	
H	H																		
I											Name: FX12V125XP-EV CHANGE HISTORY				Sheet: 1 of 19		I		
											Drawn By: JUSTIN ROARK			Date: 6/6/2023			Rev #: 4		
											Part #: 200-012-140			P&ID #:FX12V125XP-EV R4					
											THIS DRAWING IS PROPERTY OF FLOGISTIX AND CANNOT BE COPIED WITHOUT THE PERMISSION OF FLOGISTIX.								
	Unit Type: FX12V125XP-EV		Approval:				Approval:												
J	1	2	3	4	5	6	7	8	△	9	10	11	12	13	14	15	16	J	



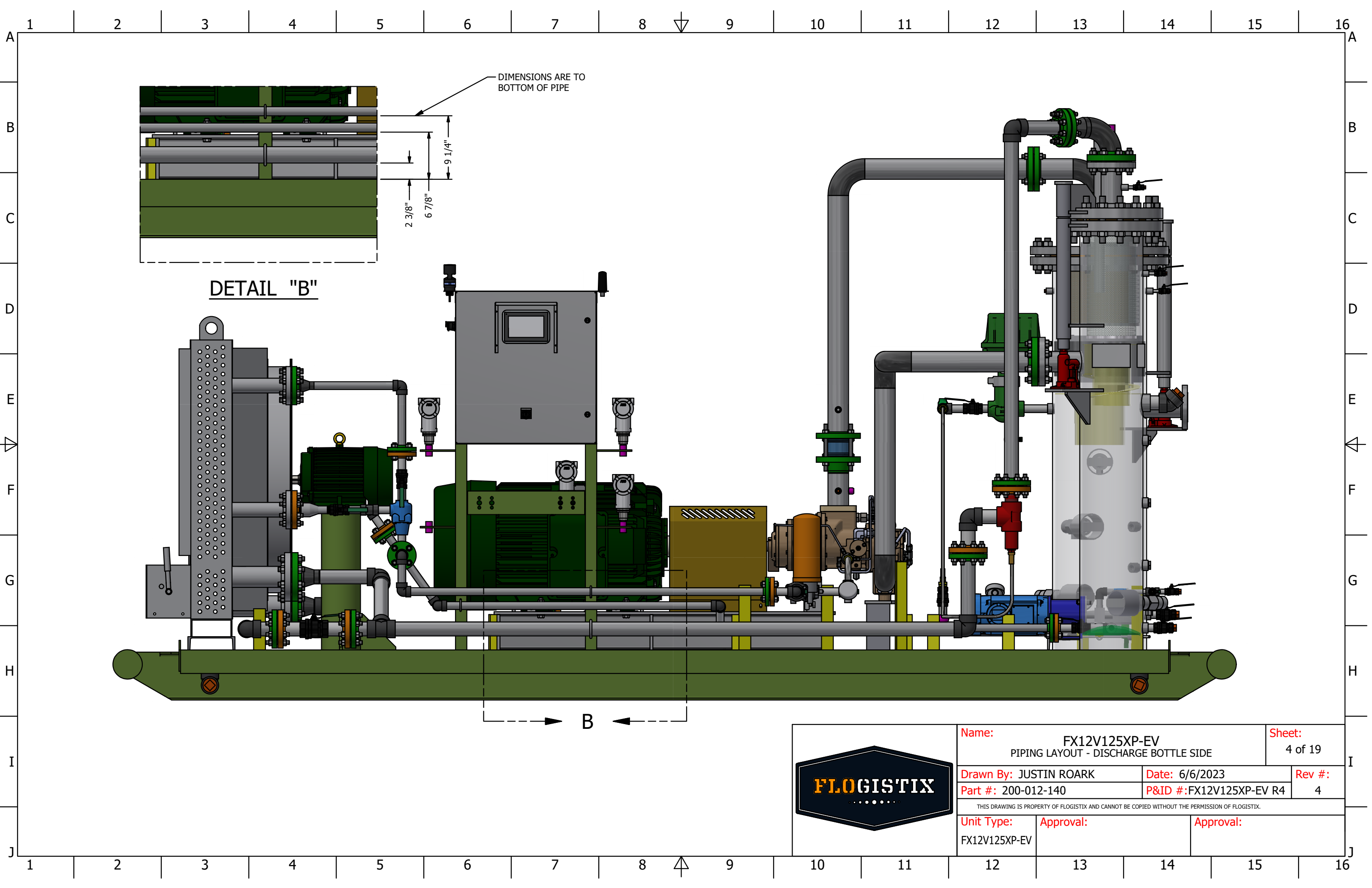
TOTAL EST. WEIGHT 8,500 LBS



Name: FX12V125XP-EV COMPONENT LAYOUT		Sheet: 2 of 19	
Drawn By: JUSTIN ROARK		Date: 6/6/2023	
Part #: 200-012-140		Rev #: 4	
P&ID #:FX12V125XP-EV R4		4	
THIS DRAWING IS PROPERTY OF FLOGISTIX AND CANNOT BE COPIED WITHOUT THE PERMISSION OF FLOGISTIX.			
Unit Type: FX12V125XP-EV		Approval:	



Name: FX12V125XP-EV PIPING LAYOUT - TOP VIEW		Sheet: 3 of 19	
Drawn By: JUSTIN ROARK		Date: 6/6/2023	
Part #: 200-012-140		Rev #: 4	
P&ID #:FX12V125XP-EV R4			
THIS DRAWING IS PROPERTY OF FLOGISTIX AND CANNOT BE COPIED WITHOUT THE PERMISSION OF FLOGISTIX.			
Unit Type: FX12V125XP-EV		Approval:	



DETAIL "B"

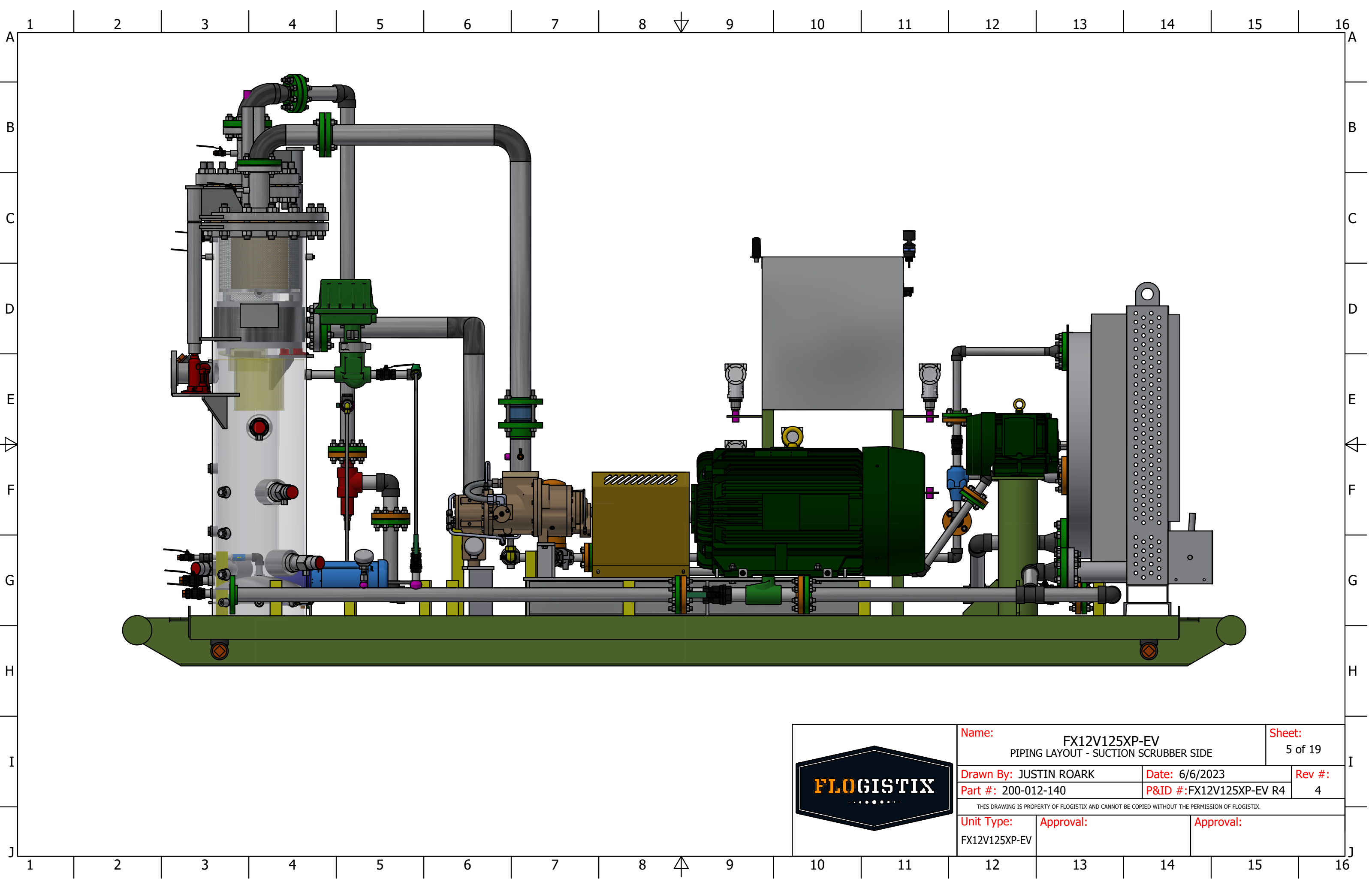
DIMENSIONS ARE TO  
BOTTOM OF PIPE

2 3/8"  
6 7/8"  
9 1/4"

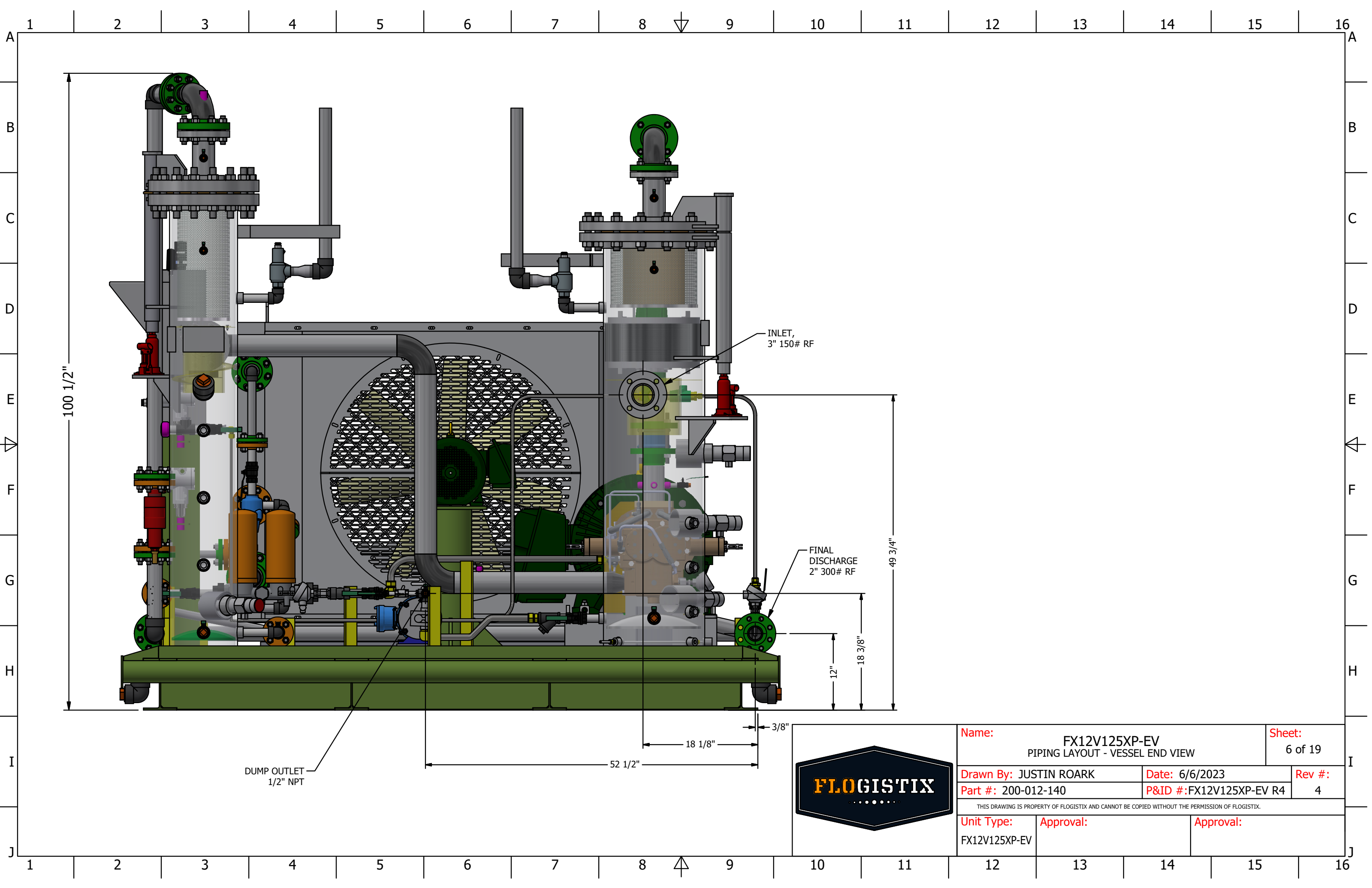
B



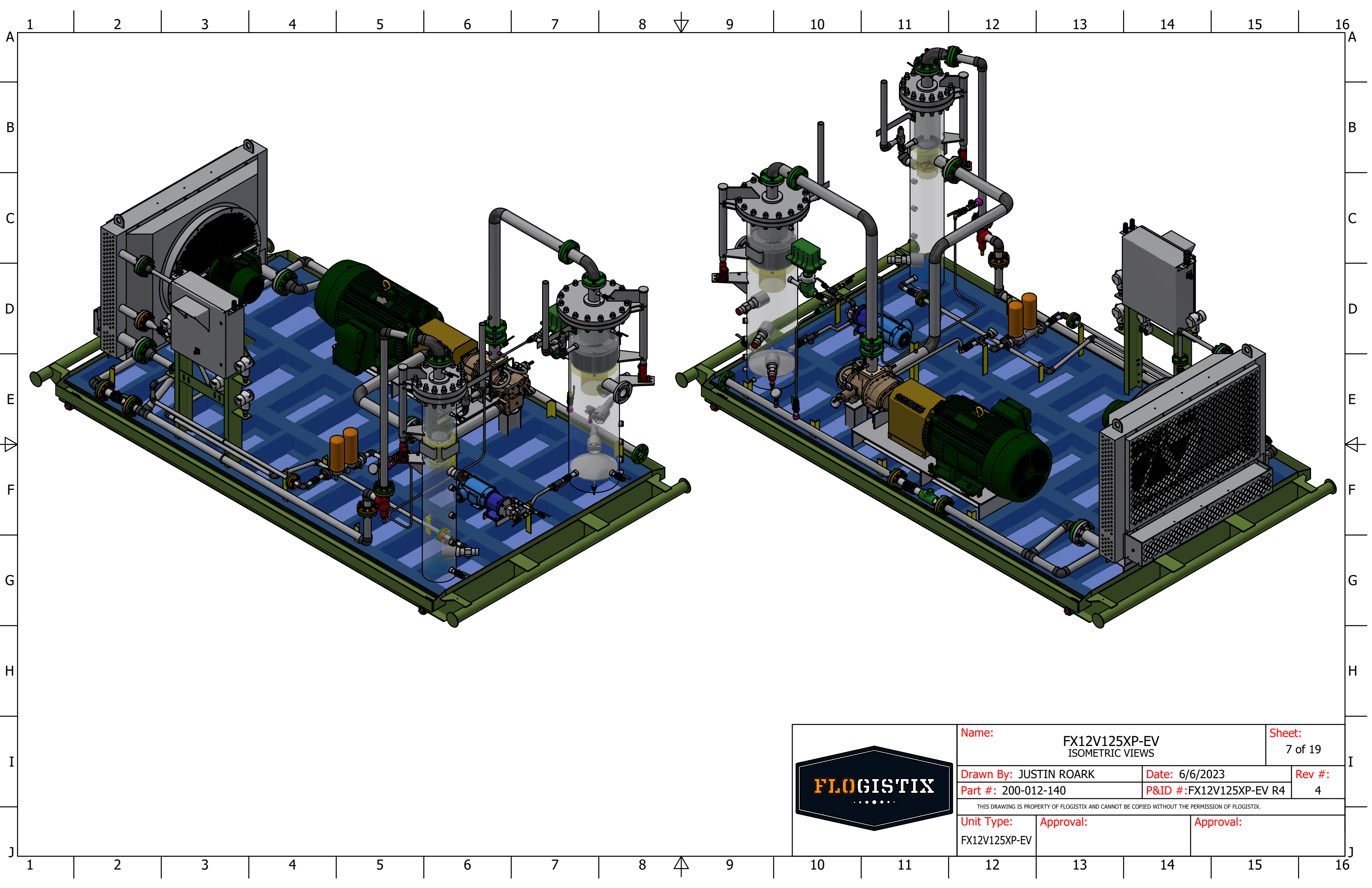
Name: FX12V125XP-EV PIPING LAYOUT - DISCHARGE BOTTLE SIDE		Sheet: 4 of 19
Drawn By: JUSTIN ROARK	Date: 6/6/2023	Rev #: 4
Part #: 200-012-140	P&ID #:FX12V125XP-EV R4	
THIS DRAWING IS PROPERTY OF FLOGISTIX AND CANNOT BE COPIED WITHOUT THE PERMISSION OF FLOGISTIX.		
Unit Type: FX12V125XP-EV	Approval:	Approval:



Name: FX12V125XP-EV PIPING LAYOUT - SUCTION SCRUBBER SIDE		Sheet: 5 of 19
Drawn By: JUSTIN ROARK	Date: 6/6/2023	Rev #: 4
Part #: 200-012-140	P&ID #: FX12V125XP-EV R4	
THIS DRAWING IS PROPERTY OF FLOGISTIX AND CANNOT BE COPIED WITHOUT THE PERMISSION OF FLOGISTIX.		
Unit Type: FX12V125XP-EV	Approval:	Approval:

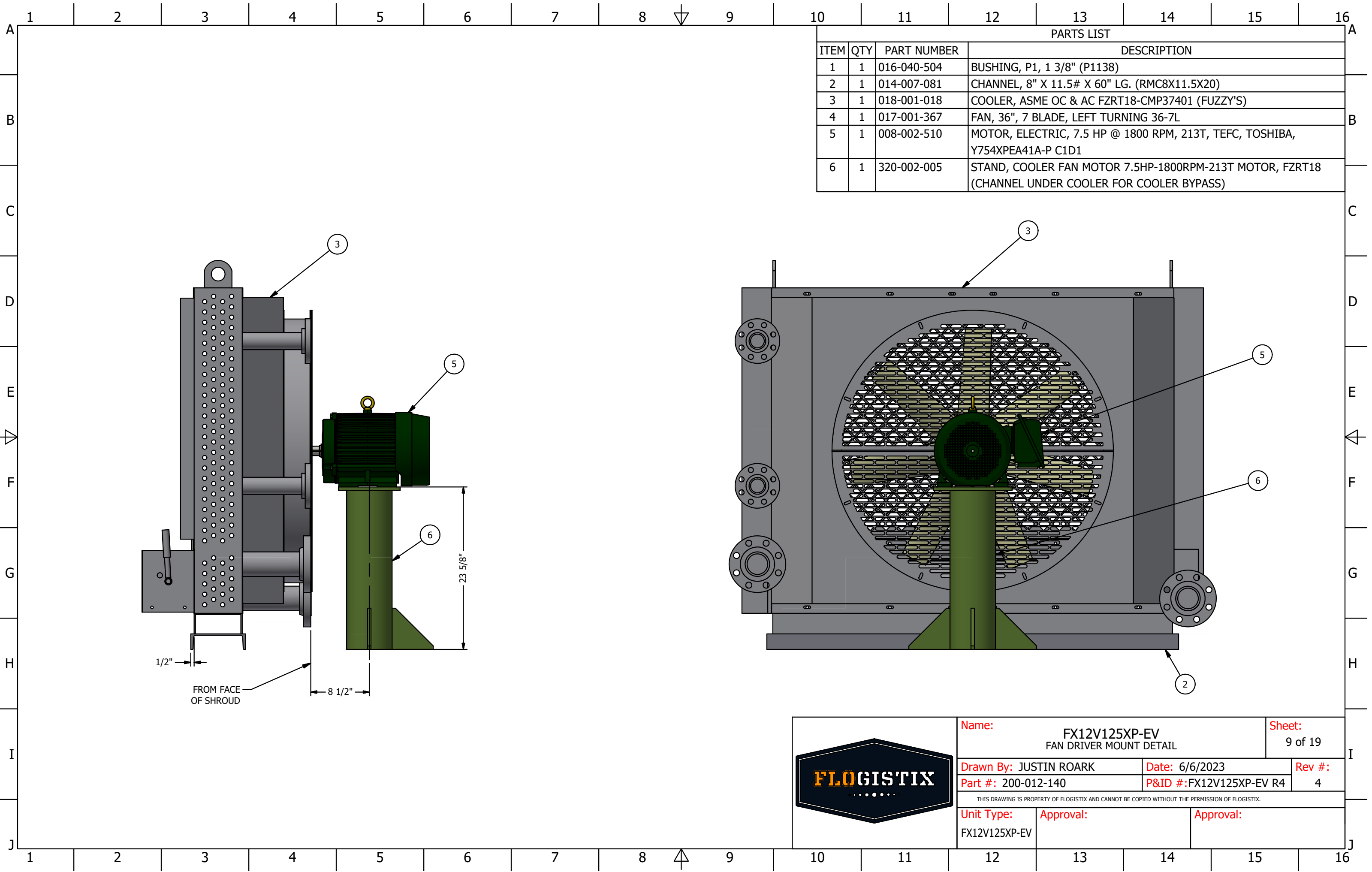


Name: FX12V125XP-EV PIPING LAYOUT - VESSEL END VIEW		Sheet: 6 of 19	
Drawn By: JUSTIN ROARK		Date: 6/6/2023	
Part #: 200-012-140		Rev #: 4	
P&ID #:FX12V125XP-EV R4		4	
THIS DRAWING IS PROPERTY OF FLOGISTIX AND CANNOT BE COPIED WITHOUT THE PERMISSION OF FLOGISTIX.			
Unit Type: FX12V125XP-EV		Approval:	
		Approval:	

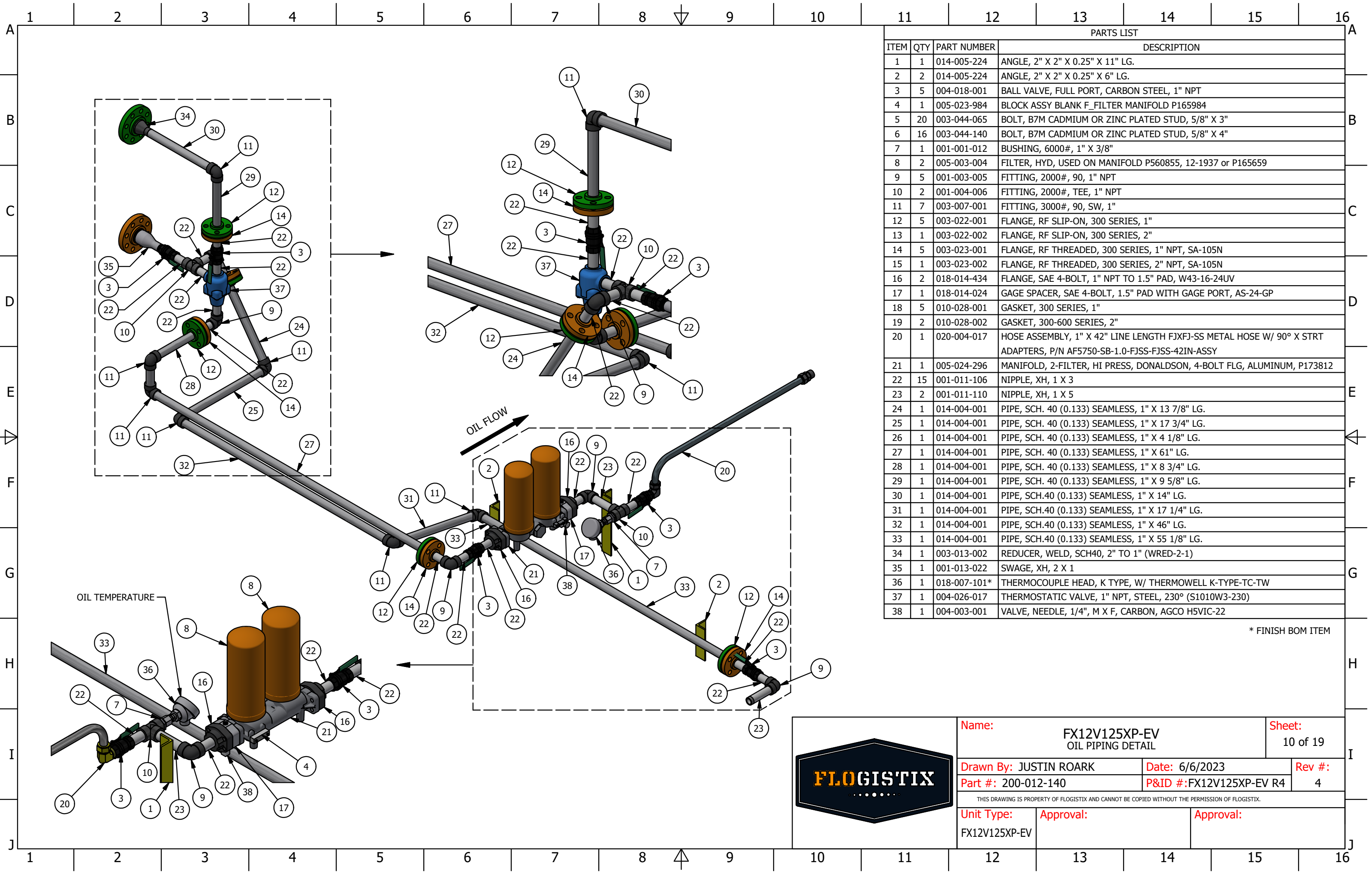


Name: FX12V125XP-EV ISOMETRIC VIEWS		Sheet: 7 of 19	
Drawn By: JUSTIN ROARK		Date: 6/6/2023	Rev #: 4
Part #: 200-012-140		P&ID #:FX12V125XP-EV R4	4
THIS DRAWING IS PROPERTY OF FLOGISTIX AND CANNOT BE COPIED WITHOUT THE PERMISSION OF FLOGISTIX.			
Unit Type: FX12V125XP-EV	Approval:		Approval:





Name: FX12V125XP-EV FAN DRIVER MOUNT DETAIL		Sheet: 9 of 19	
Drawn By: JUSTIN ROARK		Date: 6/6/2023	Rev #: 4
Part #: 200-012-140		P&ID #:FX12V125XP-EV R4	
THIS DRAWING IS PROPERTY OF FLOGISTIX AND CANNOT BE COPIED WITHOUT THE PERMISSION OF FLOGISTIX.			
Unit Type: FX12V125XP-EV	Approval:	Approval:	

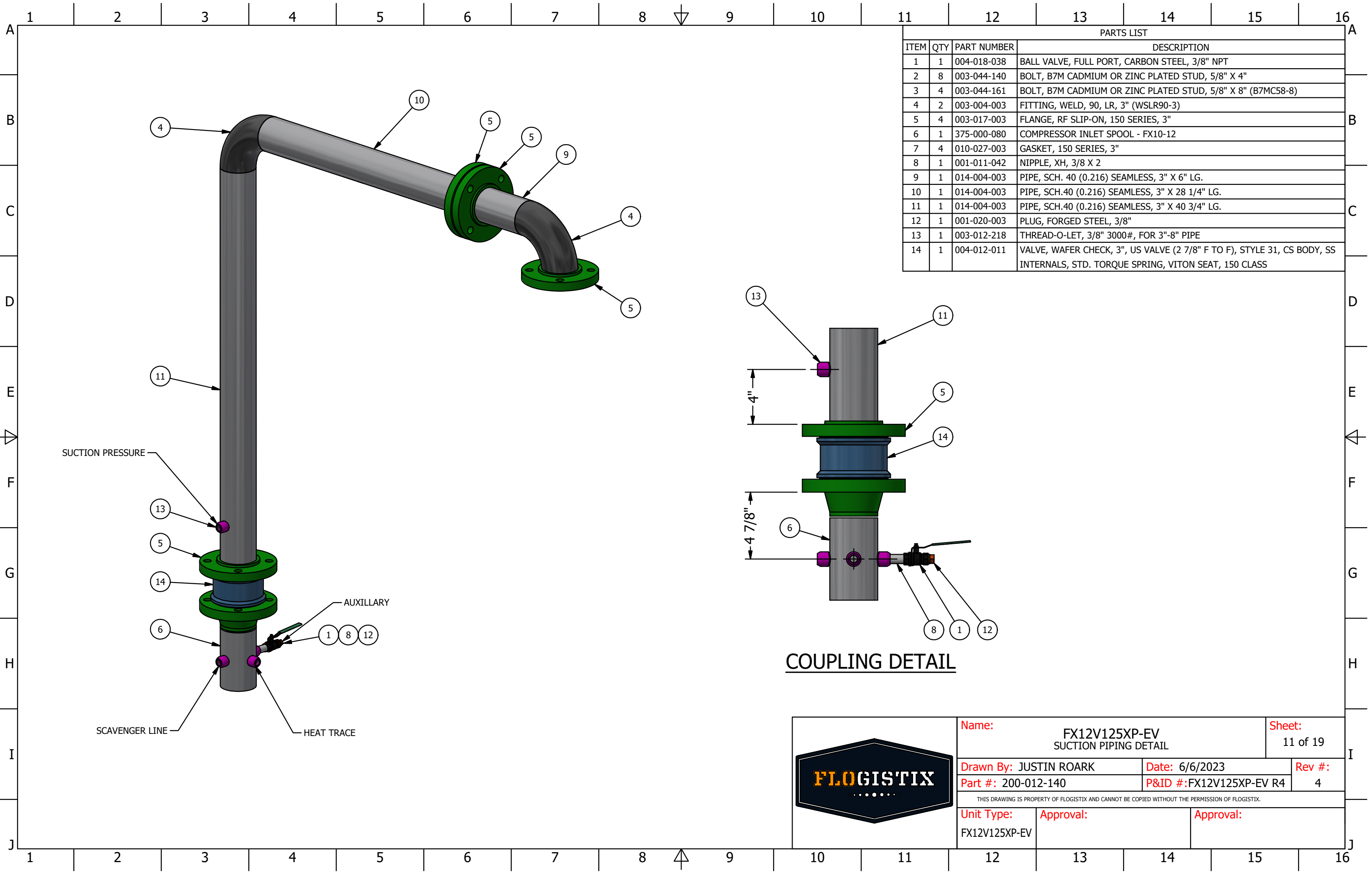


PARTS LIST			
ITEM	QTY	PART NUMBER	DESCRIPTION
1	1	014-005-224	ANGLE, 2" X 2" X 0.25" X 11" LG.
2	2	014-005-224	ANGLE, 2" X 2" X 0.25" X 6" LG.
3	5	004-018-001	BALL VALVE, FULL PORT, CARBON STEEL, 1" NPT
4	1	005-023-984	BLOCK ASSY BLANK F_FILTER MANIFOLD P165984
5	20	003-044-065	BOLT, B7M CADMIUM OR ZINC PLATED STUD, 5/8" X 3"
6	16	003-044-140	BOLT, B7M CADMIUM OR ZINC PLATED STUD, 5/8" X 4"
7	1	001-001-012	BUSHING, 6000#, 1" X 3/8"
8	2	005-003-004	FILTER, HYD, USED ON MANIFOLD P560855, 12-1937 or P165659
9	5	001-003-005	FITTING, 2000#, 90, 1" NPT
10	2	001-004-006	FITTING, 2000#, TEE, 1" NPT
11	7	003-007-001	FITTING, 3000#, 90, SW, 1"
12	5	003-022-001	FLANGE, RF SLIP-ON, 300 SERIES, 1"
13	1	003-022-002	FLANGE, RF SLIP-ON, 300 SERIES, 2"
14	5	003-023-001	FLANGE, RF THREADED, 300 SERIES, 1" NPT, SA-105N
15	1	003-023-002	FLANGE, RF THREADED, 300 SERIES, 2" NPT, SA-105N
16	2	018-014-434	FLANGE, SAE 4-BOLT, 1" NPT TO 1.5" PAD, W43-16-24UV
17	1	018-014-024	GAGE SPACER, SAE 4-BOLT, 1.5" PAD WITH GAGE PORT, AS-24-GP
18	5	010-028-001	GASKET, 300 SERIES, 1"
19	2	010-028-002	GASKET, 300-600 SERIES, 2"
20	1	020-004-017	HOSE ASSEMBLY, 1" X 42" LINE LENGTH FJXFJ-SS METAL HOSE W/ 90° X STRT ADAPTERS, P/N AF5750-SB-1.0-FJSS-FJSS-42IN-ASSY
21	1	005-024-296	MANIFOLD, 2-FILTER, HI PRESS, DONALDSON, 4-BOLT FLG, ALUMINUM, P173812
22	15	001-011-106	NIPPLE, XH, 1 X 3
23	2	001-011-110	NIPPLE, XH, 1 X 5
24	1	014-004-001	PIPE, SCH. 40 (0.133) SEAMLESS, 1" X 13 7/8" LG.
25	1	014-004-001	PIPE, SCH. 40 (0.133) SEAMLESS, 1" X 17 3/4" LG.
26	1	014-004-001	PIPE, SCH. 40 (0.133) SEAMLESS, 1" X 4 1/8" LG.
27	1	014-004-001	PIPE, SCH. 40 (0.133) SEAMLESS, 1" X 61" LG.
28	1	014-004-001	PIPE, SCH. 40 (0.133) SEAMLESS, 1" X 8 3/4" LG.
29	1	014-004-001	PIPE, SCH. 40 (0.133) SEAMLESS, 1" X 9 5/8" LG.
30	1	014-004-001	PIPE, SCH.40 (0.133) SEAMLESS, 1" X 14" LG.
31	1	014-004-001	PIPE, SCH.40 (0.133) SEAMLESS, 1" X 17 1/4" LG.
32	1	014-004-001	PIPE, SCH.40 (0.133) SEAMLESS, 1" X 46" LG.
33	1	014-004-001	PIPE, SCH.40 (0.133) SEAMLESS, 1" X 55 1/8" LG.
34	1	003-013-002	REDUCER, WELD, SCH40, 2" TO 1" (WRED-2-1)
35	1	001-013-022	SWAGE, XH, 2 X 1
36	1	018-007-101*	THERMOCOUPLE HEAD, K TYPE, W/ THERMOWELL K-TYPE-TC-TW
37	1	004-026-017	THERMOSTATIC VALVE, 1" NPT, STEEL, 230° (S1010W3-230)
38	1	004-003-001	VALVE, NEEDLE, 1/4", M X F, CARBON, AGCO H5VIC-22

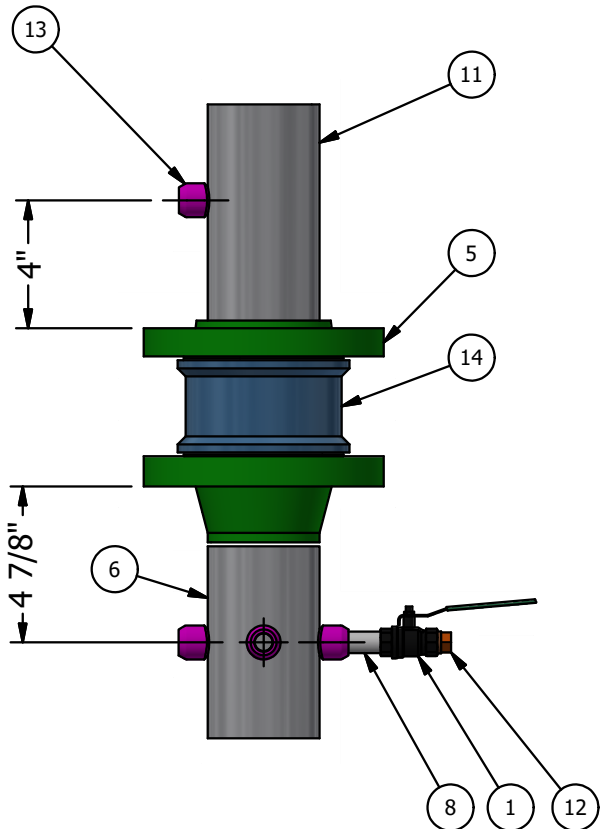
\* FINISH BOM ITEM




Name: FX12V125XP-EV OIL PIPING DETAIL		Sheet: 10 of 19	
Drawn By: JUSTIN ROARK		Date: 6/6/2023	Rev #: 4
Part #: 200-012-140		P&ID #:FX12V125XP-EV R4	
THIS DRAWING IS PROPERTY OF FLOGISTIX AND CANNOT BE COPIED WITHOUT THE PERMISSION OF FLOGISTIX.			
Unit Type: FX12V125XP-EV	Approval:	Approval:	

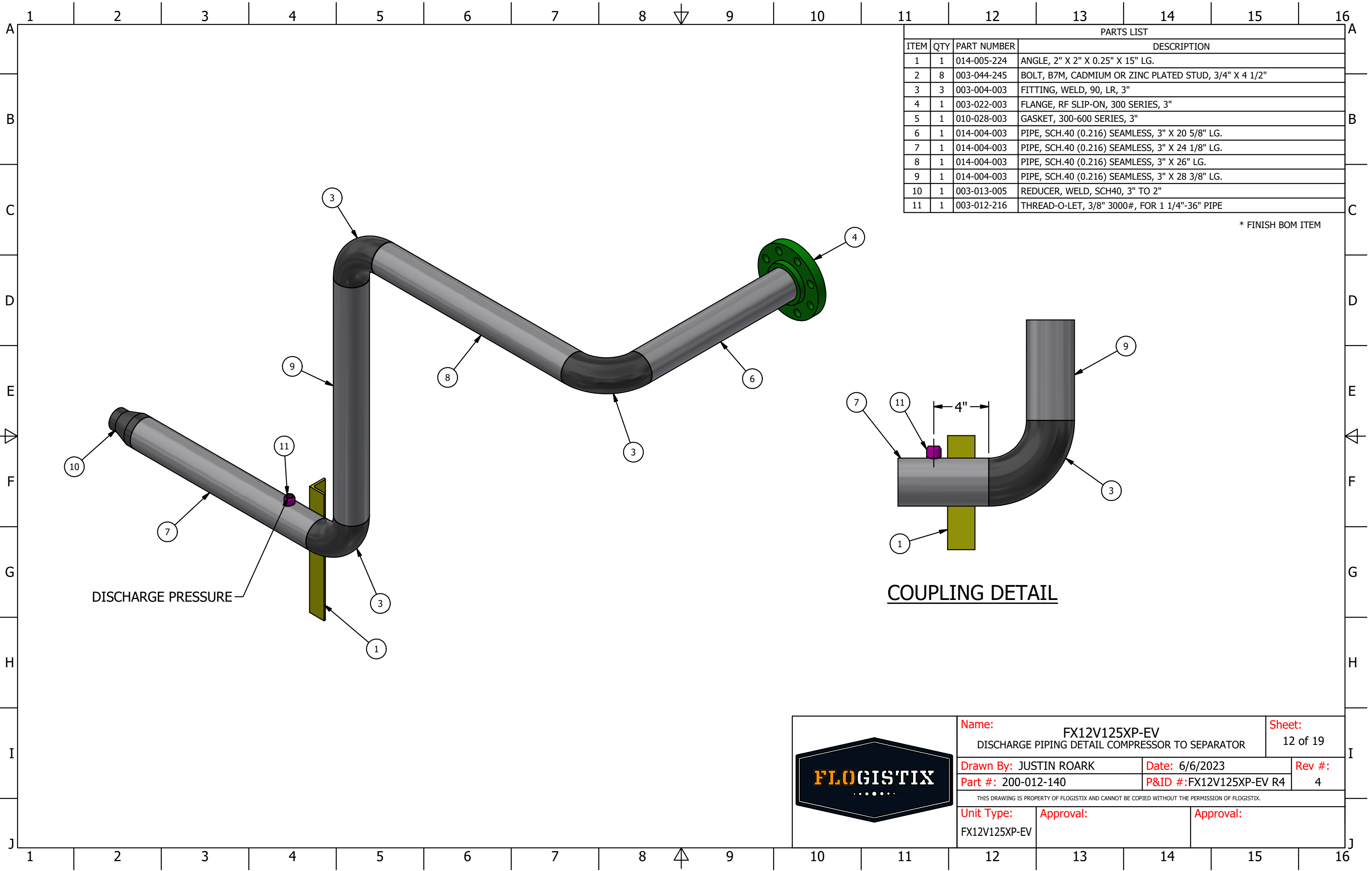


PARTS LIST			
ITEM	QTY	PART NUMBER	DESCRIPTION
1	1	004-018-038	BALL VALVE, FULL PORT, CARBON STEEL, 3/8" NPT
2	8	003-044-140	BOLT, B7M CADMIUM OR ZINC PLATED STUD, 5/8" X 4"
3	4	003-044-161	BOLT, B7M CADMIUM OR ZINC PLATED STUD, 5/8" X 8" (B7MC58-8)
4	2	003-004-003	FITTING, WELD, 90, LR, 3" (WSLR90-3)
5	4	003-017-003	FLANGE, RF SLIP-ON, 150 SERIES, 3"
6	1	375-000-080	COMPRESSOR INLET SPOOL - FX10-12
7	4	010-027-003	GASKET, 150 SERIES, 3"
8	1	001-011-042	NIPPLE, XH, 3/8 X 2
9	1	014-004-003	PIPE, SCH. 40 (0.216) SEAMLESS, 3" X 6" LG.
10	1	014-004-003	PIPE, SCH.40 (0.216) SEAMLESS, 3" X 28 1/4" LG.
11	1	014-004-003	PIPE, SCH.40 (0.216) SEAMLESS, 3" X 40 3/4" LG.
12	1	001-020-003	PLUG, FORGED STEEL, 3/8"
13	1	003-012-218	THREAD-O-LET, 3/8" 3000#, FOR 3"-8" PIPE
14	1	004-012-011	VALVE, WAFER CHECK, 3", US VALVE (2 7/8" F TO F), STYLE 31, CS BODY, SS INTERNALS, STD. TORQUE SPRING, VITON SEAT, 150 CLASS



COUPLING DETAIL

	Name: FX12V125XP-EV SUCTION PIPING DETAIL		Sheet: 11 of 19	
	Drawn By: JUSTIN ROARK		Date: 6/6/2023	Rev #: 4
	Part #: 200-012-140		P&ID #:FX12V125XP-EV R4	
	THIS DRAWING IS PROPERTY OF FLOGISTIX AND CANNOT BE COPIED WITHOUT THE PERMISSION OF FLOGISTIX.			
	Unit Type: FX12V125XP-EV		Approval:	Approval:



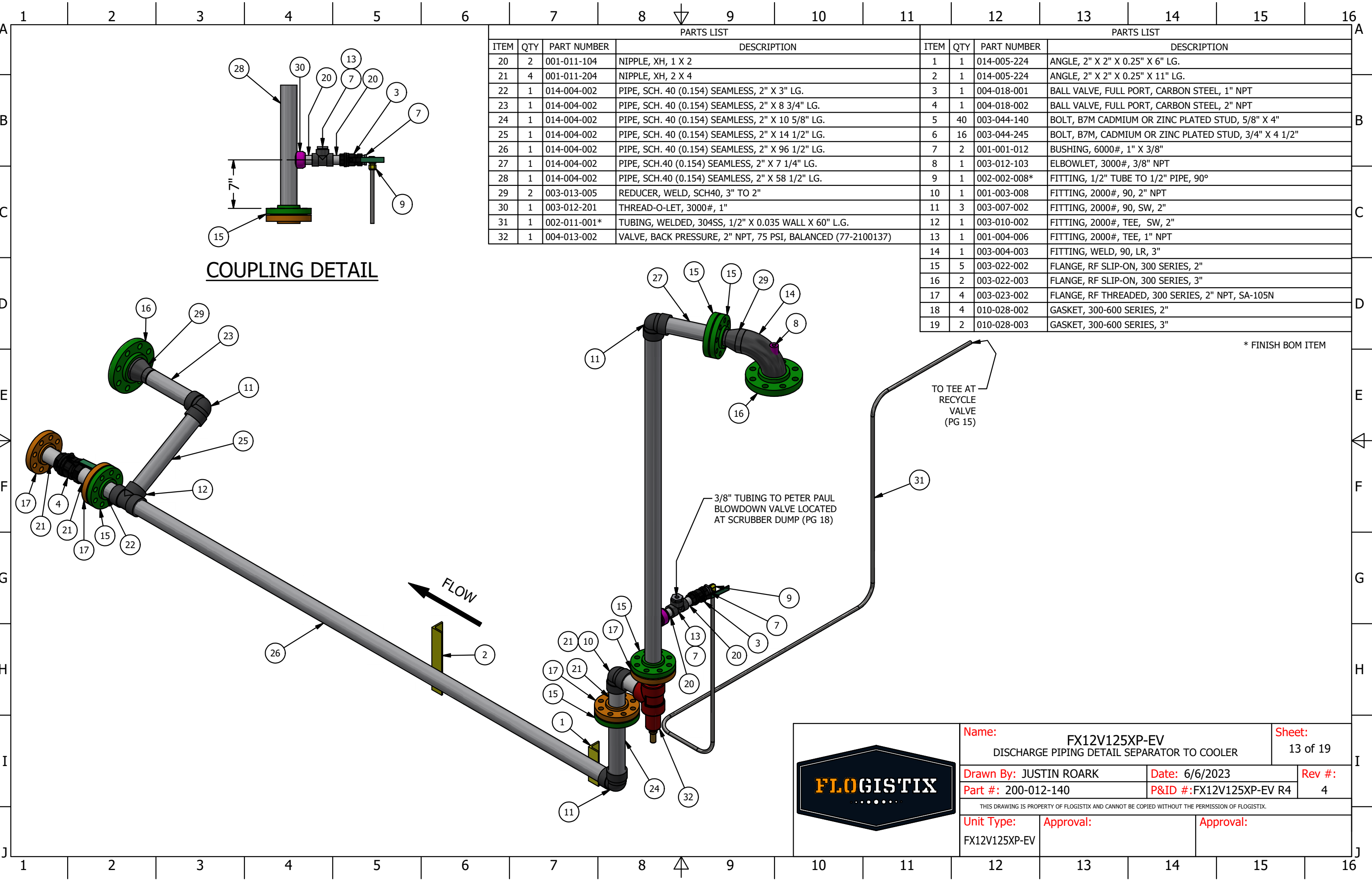
PARTS LIST			
ITEM	QTY	PART NUMBER	DESCRIPTION
1	1	014-005-224	ANGLE, 2" X 2" X 0.25" X 15" LG.
2	8	003-044-245	BOLT, B7M, CADMIUM OR ZINC PLATED STUD, 3/4" X 4 1/2"
3	3	003-004-003	FITTING, WELD, 90, LR, 3"
4	1	003-022-003	FLANGE, RF SLIP-ON, 300 SERIES, 3"
5	1	010-028-003	GASKET, 300-600 SERIES, 3"
6	1	014-004-003	PIPE, SCH.40 (0.216) SEAMLESS, 3" X 20 5/8" LG.
7	1	014-004-003	PIPE, SCH.40 (0.216) SEAMLESS, 3" X 24 1/8" LG.
8	1	014-004-003	PIPE, SCH.40 (0.216) SEAMLESS, 3" X 26" LG.
9	1	014-004-003	PIPE, SCH.40 (0.216) SEAMLESS, 3" X 28 3/8" LG.
10	1	003-013-005	REDUCER, WELD, SCH40, 3" TO 2"
11	1	003-012-216	THREAD-O-LET, 3/8" 3000#, FOR 1 1/4"-36" PIPE

\* FINISH BOM ITEM

COUPLING DETAIL



Name: FX12V125XP-EV DISCHARGE PIPING DETAIL COMPRESSOR TO SEPARATOR		Sheet: 12 of 19	
Drawn By: JUSTIN ROARK		Date: 6/6/2023	Rev #: 4
Part #: 200-012-140		P&ID #:FX12V125XP-EV R4	4
THIS DRAWING IS PROPERTY OF FLOGISTIX AND CANNOT BE COPIED WITHOUT THE PERMISSION OF FLOGISTIX.			
Unit Type: FX12V125XP-EV	Approval:	Approval:	



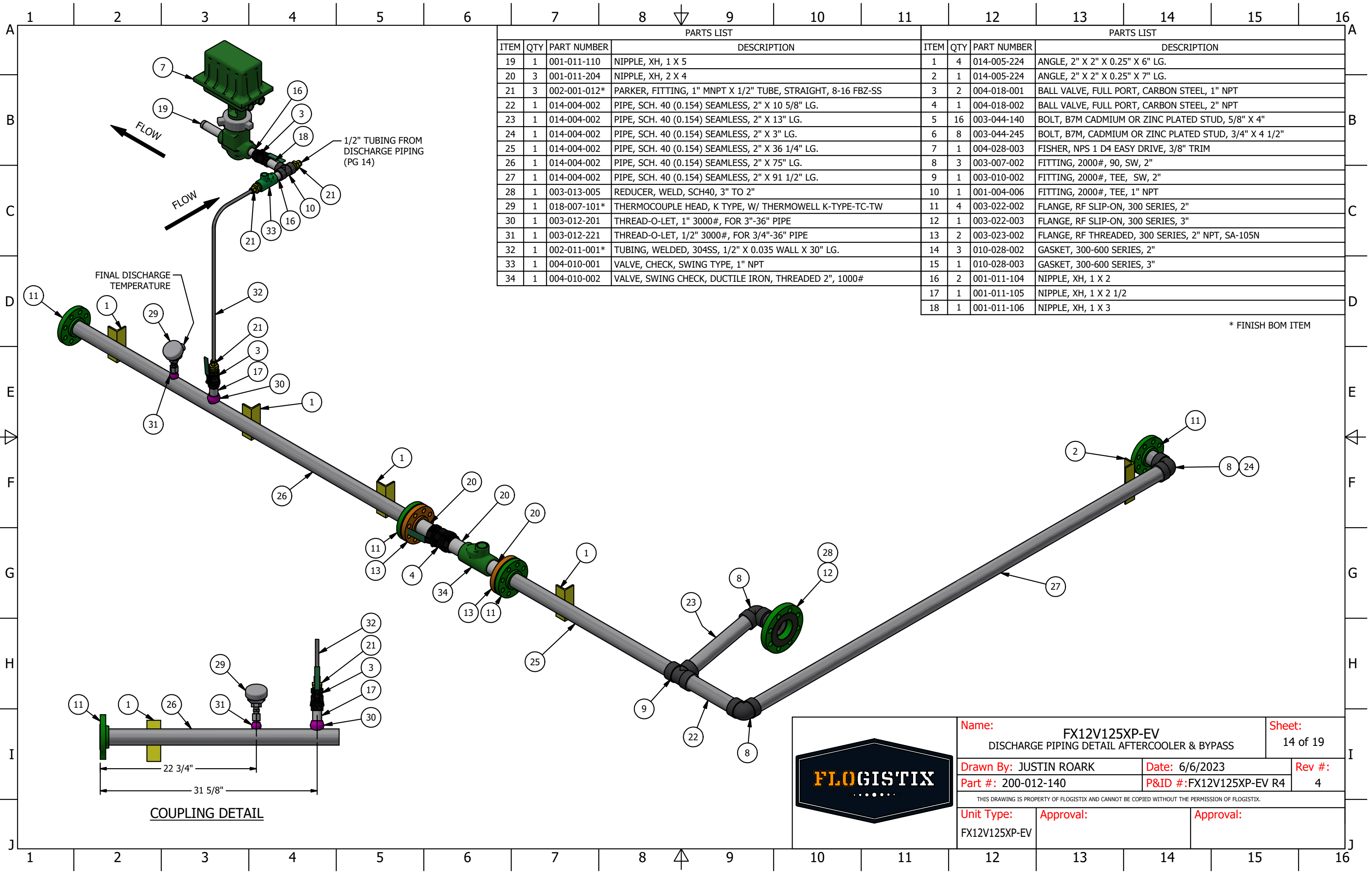
COUPLING DETAIL

PARTS LIST				PARTS LIST			
ITEM	QTY	PART NUMBER	DESCRIPTION	ITEM	QTY	PART NUMBER	DESCRIPTION
20	2	001-011-104	NIPPLE, XH, 1 X 2	1	1	014-005-224	ANGLE, 2" X 2" X 0.25" X 6" LG.
21	4	001-011-204	NIPPLE, XH, 2 X 4	2	1	014-005-224	ANGLE, 2" X 2" X 0.25" X 11" LG.
22	1	014-004-002	PIPE, SCH. 40 (0.154) SEAMLESS, 2" X 3" LG.	3	1	004-018-001	BALL VALVE, FULL PORT, CARBON STEEL, 1" NPT
23	1	014-004-002	PIPE, SCH. 40 (0.154) SEAMLESS, 2" X 8 3/4" LG.	4	1	004-018-002	BALL VALVE, FULL PORT, CARBON STEEL, 2" NPT
24	1	014-004-002	PIPE, SCH. 40 (0.154) SEAMLESS, 2" X 10 5/8" LG.	5	40	003-044-140	BOLT, B7M CADMIUM OR ZINC PLATED STUD, 5/8" X 4"
25	1	014-004-002	PIPE, SCH. 40 (0.154) SEAMLESS, 2" X 14 1/2" LG.	6	16	003-044-245	BOLT, B7M, CADMIUM OR ZINC PLATED STUD, 3/4" X 4 1/2"
26	1	014-004-002	PIPE, SCH. 40 (0.154) SEAMLESS, 2" X 96 1/2" LG.	7	2	001-001-012	BUSHING, 6000#, 1" X 3/8"
27	1	014-004-002	PIPE, SCH.40 (0.154) SEAMLESS, 2" X 7 1/4" LG.	8	1	003-012-103	ELBOWLET, 3000#, 3/8" NPT
28	1	014-004-002	PIPE, SCH.40 (0.154) SEAMLESS, 2" X 58 1/2" LG.	9	1	002-002-008*	FITTING, 1/2" TUBE TO 1/2" PIPE, 90°
29	2	003-013-005	REDUCER, WELD, SCH40, 3" TO 2"	10	1	001-003-008	FITTING, 2000#, 90, 2" NPT
30	1	003-012-201	THREAD-O-LET, 3000#, 1"	11	3	003-007-002	FITTING, 2000#, 90, SW, 2"
31	1	002-011-001*	TUBING, WELDED, 304SS, 1/2" X 0.035 WALL X 60" L.G.	12	1	003-010-002	FITTING, 2000#, TEE, SW, 2"
32	1	004-013-002	VALVE, BACK PRESSURE, 2" NPT, 75 PSI, BALANCED (77-2100137)	13	1	001-004-006	FITTING, 2000#, TEE, 1" NPT
				14	1	003-004-003	FITTING, WELD, 90, LR, 3"
				15	5	003-022-002	FLANGE, RF SLIP-ON, 300 SERIES, 2"
				16	2	003-022-003	FLANGE, RF SLIP-ON, 300 SERIES, 3"
				17	4	003-023-002	FLANGE, RF THREADED, 300 SERIES, 2" NPT, SA-105N
				18	4	010-028-002	GASKET, 300-600 SERIES, 2"
				19	2	010-028-003	GASKET, 300-600 SERIES, 3"

\* FINISH BOM ITEM



Name: FX12V125XP-EV DISCHARGE PIPING DETAIL SEPARATOR TO COOLER		Sheet: 13 of 19	
Drawn By: JUSTIN ROARK		Date: 6/6/2023	Rev #: 4
Part #: 200-012-140		P&ID #:FX12V125XP-EV R4	4
THIS DRAWING IS PROPERTY OF FLOGISTIX AND CANNOT BE COPIED WITHOUT THE PERMISSION OF FLOGISTIX.			
Unit Type: FX12V125XP-EV	Approval:		Approval:

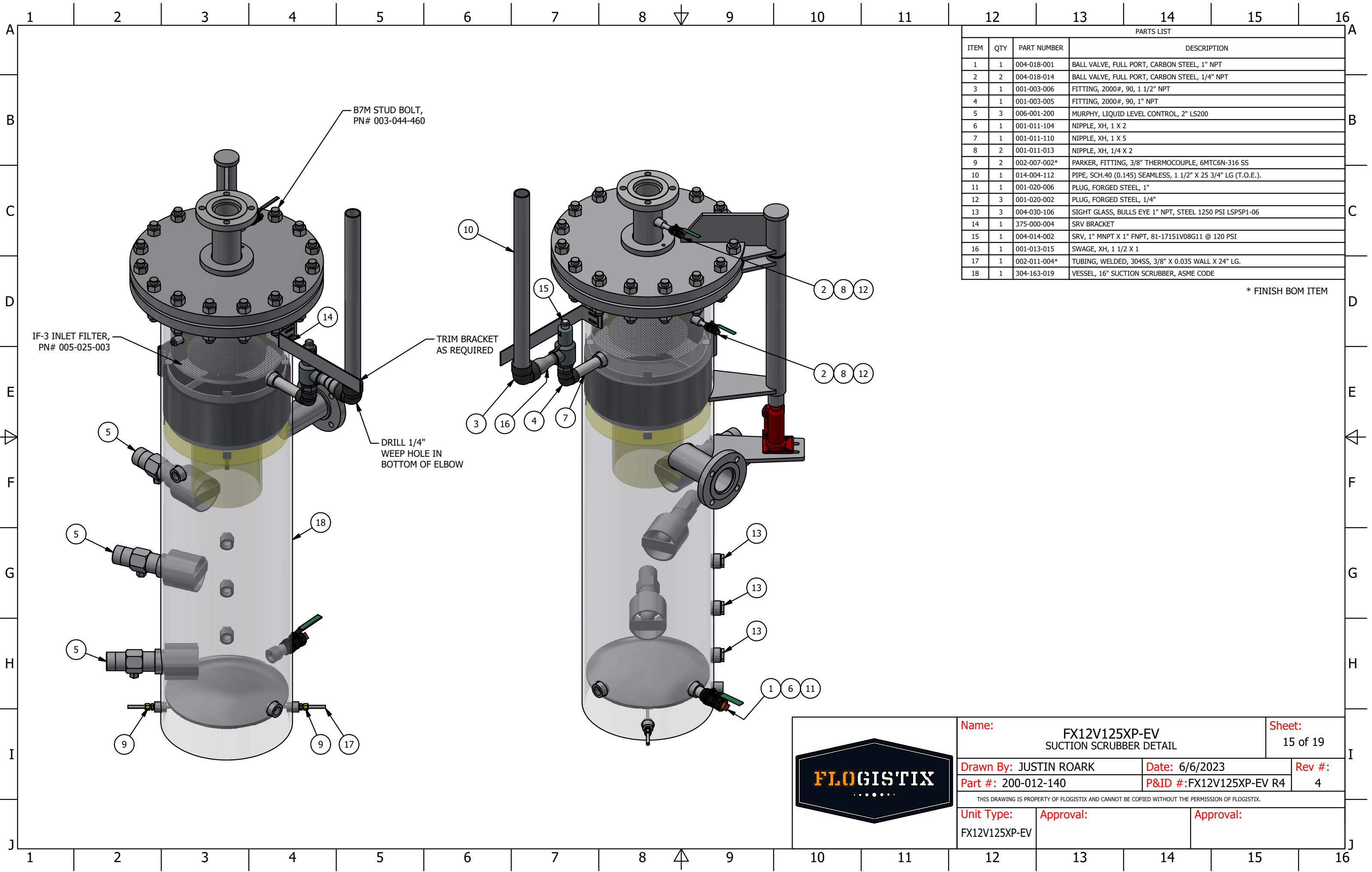


PARTS LIST				PARTS LIST			
ITEM	QTY	PART NUMBER	DESCRIPTION	ITEM	QTY	PART NUMBER	DESCRIPTION
19	1	001-011-110	NIPPLE, XH, 1 X 5	1	4	014-005-224	ANGLE, 2" X 2" X 0.25" X 6" LG.
20	3	001-011-204	NIPPLE, XH, 2 X 4	2	1	014-005-224	ANGLE, 2" X 2" X 0.25" X 7" LG.
21	3	002-001-012*	PARKER, FITTING, 1" MNPT X 1/2" TUBE, STRAIGHT, 8-16 FBZ-SS	3	2	004-018-001	BALL VALVE, FULL PORT, CARBON STEEL, 1" NPT
22	1	014-004-002	PIPE, SCH. 40 (0.154) SEAMLESS, 2" X 10 5/8" LG.	4	1	004-018-002	BALL VALVE, FULL PORT, CARBON STEEL, 2" NPT
23	1	014-004-002	PIPE, SCH. 40 (0.154) SEAMLESS, 2" X 13" LG.	5	16	003-044-140	BOLT, B7M CADMIUM OR ZINC PLATED STUD, 5/8" X 4"
24	1	014-004-002	PIPE, SCH. 40 (0.154) SEAMLESS, 2" X 3" LG.	6	8	003-044-245	BOLT, B7M, CADMIUM OR ZINC PLATED STUD, 3/4" X 4 1/2"
25	1	014-004-002	PIPE, SCH. 40 (0.154) SEAMLESS, 2" X 36 1/4" LG.	7	1	004-028-003	FISHER, NPS 1 D4 EASY DRIVE, 3/8" TRIM
26	1	014-004-002	PIPE, SCH. 40 (0.154) SEAMLESS, 2" X 75" LG.	8	3	003-007-002	FITTING, 2000#, 90, SW, 2"
27	1	014-004-002	PIPE, SCH. 40 (0.154) SEAMLESS, 2" X 91 1/2" LG.	9	1	003-010-002	FITTING, 2000#, TEE, SW, 2"
28	1	003-013-005	REDUCER, WELD, SCH40, 3" TO 2"	10	1	001-004-006	FITTING, 2000#, TEE, 1" NPT
29	1	018-007-101*	THERMOCOUPLE HEAD, K TYPE, W/ THERMOWELL K-TYPE-TC-TW	11	4	003-022-002	FLANGE, RF SLIP-ON, 300 SERIES, 2"
30	1	003-012-201	THREAD-O-LET, 1" 3000#, FOR 3"-36" PIPE	12	1	003-022-003	FLANGE, RF SLIP-ON, 300 SERIES, 3"
31	1	003-012-221	THREAD-O-LET, 1/2" 3000#, FOR 3/4"-36" PIPE	13	2	003-023-002	FLANGE, RF THREADED, 300 SERIES, 2" NPT, SA-105N
32	1	002-011-001*	TUBING, WELDED, 304SS, 1/2" X 0.035 WALL X 30" LG.	14	3	010-028-002	GASKET, 300-600 SERIES, 2"
33	1	004-010-001	VALVE, CHECK, SWING TYPE, 1" NPT	15	1	010-028-003	GASKET, 300-600 SERIES, 3"
34	1	004-010-002	VALVE, SWING CHECK, DUCTILE IRON, THREADED 2", 1000#	16	2	001-011-104	NIPPLE, XH, 1 X 2
				17	1	001-011-105	NIPPLE, XH, 1 X 2 1/2
				18	1	001-011-106	NIPPLE, XH, 1 X 3

\* FINISH BOM ITEM



Name: FX12V125XP-EV DISCHARGE PIPING DETAIL AFTERCOOLER & BYPASS		Sheet: 14 of 19	
Drawn By: JUSTIN ROARK		Date: 6/6/2023	Rev #: 4
Part #: 200-012-140		P&ID #:FX12V125XP-EV R4	
THIS DRAWING IS PROPERTY OF FLOGISTIX AND CANNOT BE COPIED WITHOUT THE PERMISSION OF FLOGISTIX.			
Unit Type: FX12V125XP-EV	Approval:	Approval:	

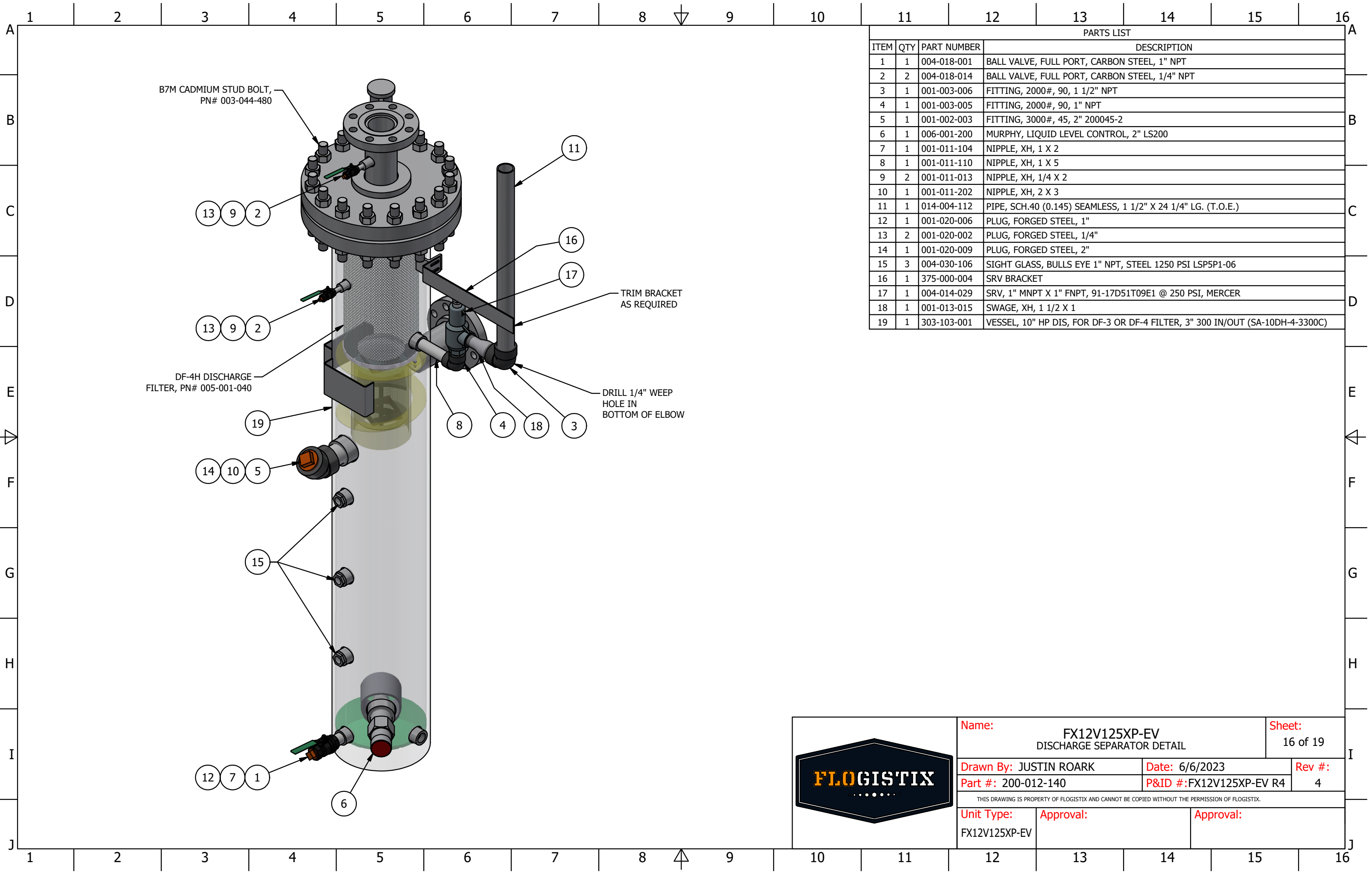



PARTS LIST			
ITEM	QTY	PART NUMBER	DESCRIPTION
1	1	004-018-001	BALL VALVE, FULL PORT, CARBON STEEL, 1" NPT
2	2	004-018-014	BALL VALVE, FULL PORT, CARBON STEEL, 1/4" NPT
3	1	001-003-006	FITTING, 2000#, 90, 1 1/2" NPT
4	1	001-003-005	FITTING, 2000#, 90, 1" NPT
5	3	006-001-200	MURPHY, LIQUID LEVEL CONTROL, 2" LS200
6	1	001-011-104	NIPPLE, XH, 1 X 2
7	1	001-011-110	NIPPLE, XH, 1 X 5
8	2	001-011-013	NIPPLE, XH, 1/4 X 2
9	2	002-007-002*	PARKER, FITTING, 3/8" THERMOCOUPLE, 6MTC6N-316 SS
10	1	014-004-112	PIPE, SCH.40 (0.145) SEAMLESS, 1 1/2" X 25 3/4" LG (T.O.E.).
11	1	001-020-006	PLUG, FORGED STEEL, 1"
12	3	001-020-002	PLUG, FORGED STEEL, 1/4"
13	3	004-030-106	SIGHT GLASS, BULLS EYE 1" NPT, STEEL 1250 PSI LSP5P1-06
14	1	375-000-004	SRV BRACKET
15	1	004-014-002	SRV, 1" MNPT X 1" FNPT, 81-17151V08G11 @ 120 PSI
16	1	001-013-015	SWAGE, XH, 1 1/2 X 1
17	1	002-011-004*	TUBING, WELDED, 304SS, 3/8" X 0.035 WALL X 24" LG.
18	1	304-163-019	VESSEL, 16" SUCTION SCRUBBER, ASME CODE

\* FINISH BOM ITEM



Name:		FX12V125XP-EV SUCTION SCRUBBER DETAIL		Sheet: 15 of 19	
Drawn By: JUSTIN ROARK		Date: 6/6/2023		Rev #:	
Part #: 200-012-140		P&ID #:FX12V125XP-EV R4		4	
THIS DRAWING IS PROPERTY OF FLOGISTIX AND CANNOT BE COPIED WITHOUT THE PERMISSION OF FLOGISTIX.					
Unit Type:		Approval:		Approval:	
FX12V125XP-EV					





Name:

FX12V125XP-EV  
DISCHARGE SEPARATOR DETAIL

Sheet:

16 of 19

Drawn By: JUSTIN ROARK

Date: 6/6/2023

Part #: 200-012-140

P&ID #:FX12V125XP-EV R4

Rev #:

4

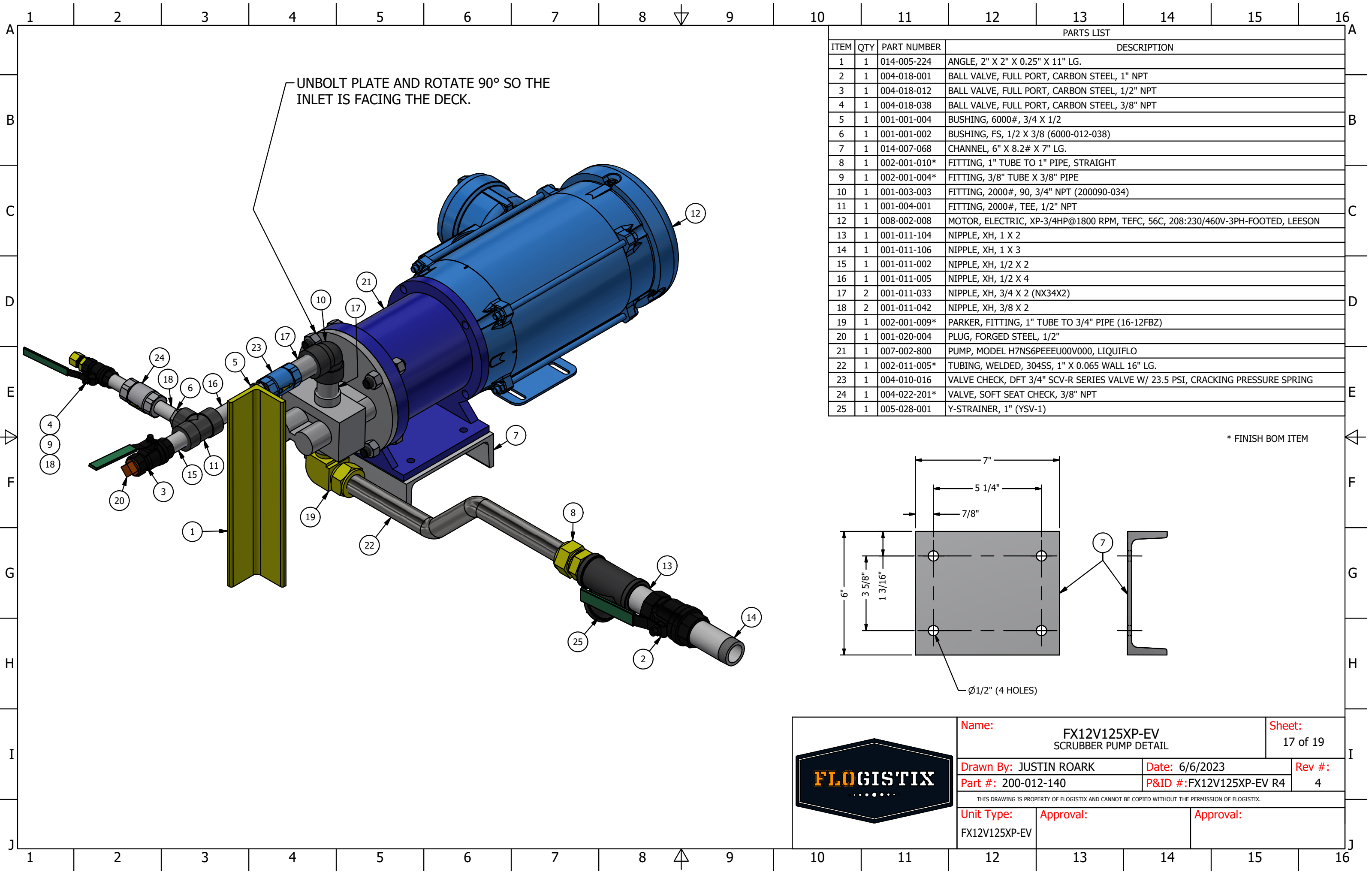
THIS DRAWING IS PROPERTY OF FLOGISTIX AND CANNOT BE COPIED WITHOUT THE PERMISSION OF FLOGISTIX.

Unit Type:

FX12V125XP-EV

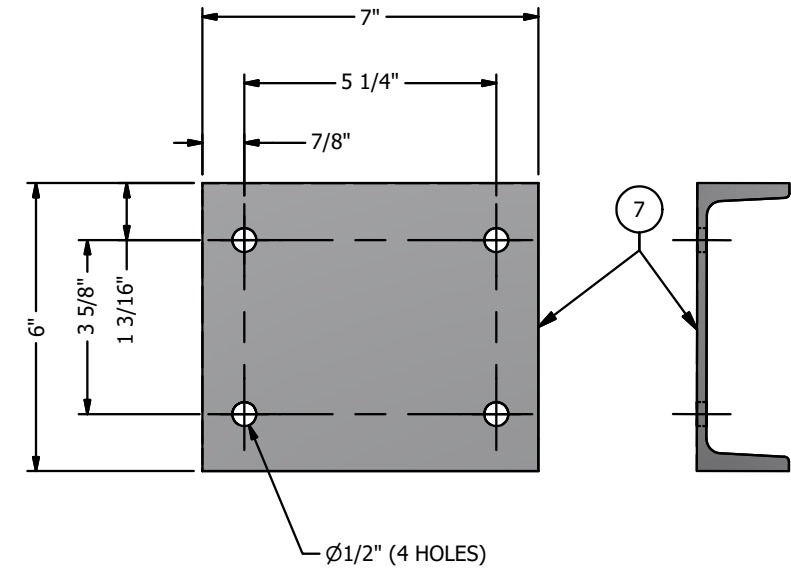
Approval:


Approval:

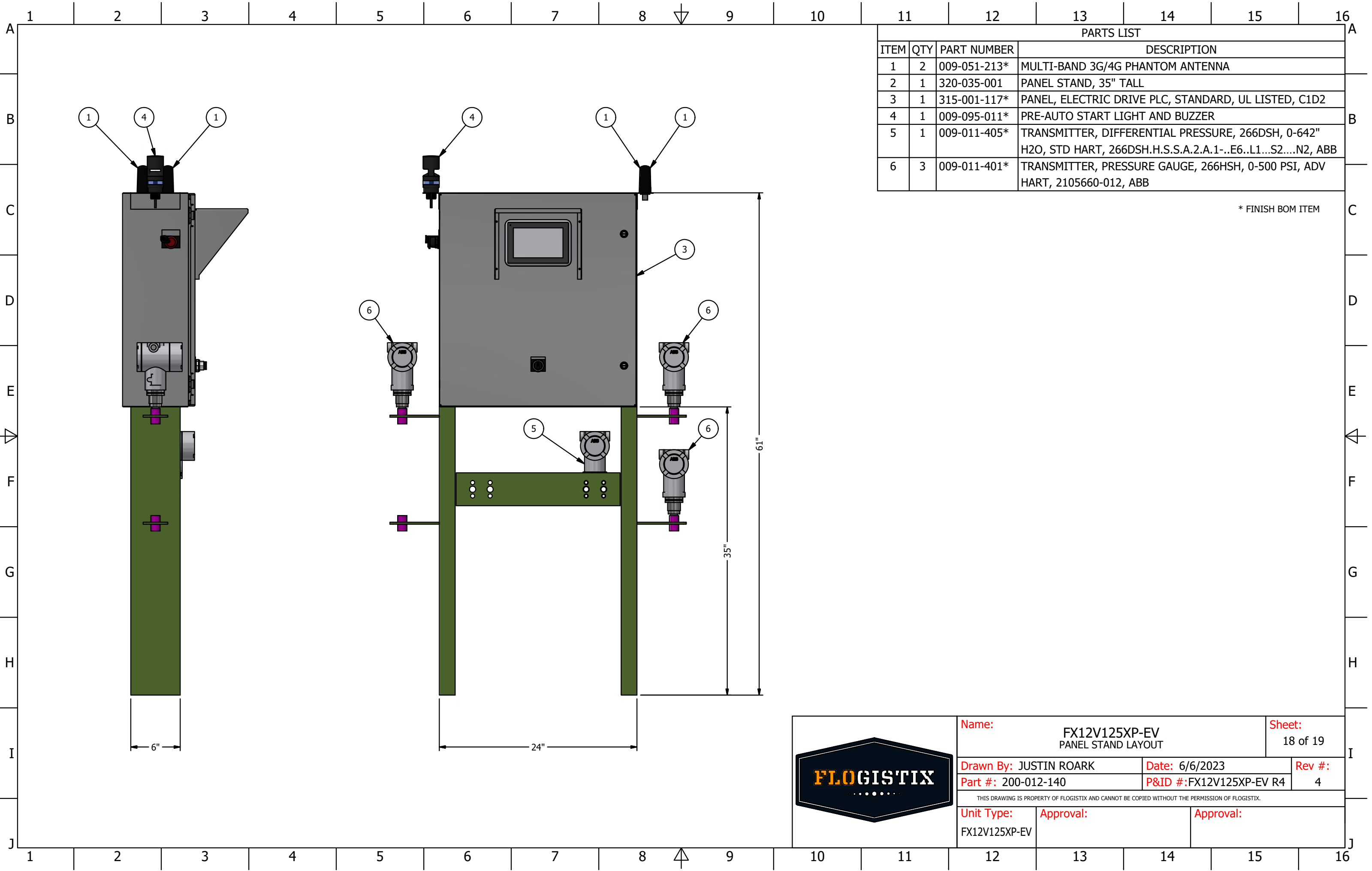



PARTS LIST			
ITEM	QTY	PART NUMBER	DESCRIPTION
1	1	014-005-224	ANGLE, 2" X 2" X 0.25" X 11" LG.
2	1	004-018-001	BALL VALVE, FULL PORT, CARBON STEEL, 1" NPT
3	1	004-018-012	BALL VALVE, FULL PORT, CARBON STEEL, 1/2" NPT
4	1	004-018-038	BALL VALVE, FULL PORT, CARBON STEEL, 3/8" NPT
5	1	001-001-004	BUSHING, 6000#, 3/4 X 1/2
6	1	001-001-002	BUSHING, FS, 1/2 X 3/8 (6000-012-038)
7	1	014-007-068	CHANNEL, 6" X 8.2# X 7" LG.
8	1	002-001-010*	FITTING, 1" TUBE TO 1" PIPE, STRAIGHT
9	1	002-001-004*	FITTING, 3/8" TUBE X 3/8" PIPE
10	1	001-003-003	FITTING, 2000#, 90, 3/4" NPT (200090-034)
11	1	001-004-001	FITTING, 2000#, TEE, 1/2" NPT
12	1	008-002-008	MOTOR, ELECTRIC, XP-3/4HP@1800 RPM, TEFC, 56C, 208:230/460V-3PH-FOOTED, LEESON
13	1	001-011-104	NIPPLE, XH, 1 X 2
14	1	001-011-106	NIPPLE, XH, 1 X 3
15	1	001-011-002	NIPPLE, XH, 1/2 X 2
16	1	001-011-005	NIPPLE, XH, 1/2 X 4
17	2	001-011-033	NIPPLE, XH, 3/4 X 2 (NX34X2)
18	2	001-011-042	NIPPLE, XH, 3/8 X 2
19	1	002-001-009*	PARKER, FITTING, 1" TUBE TO 3/4" PIPE (16-12FBZ)
20	1	001-020-004	PLUG, FORGED STEEL, 1/2"
21	1	007-002-800	PUMP, MODEL H7NS6PEEEU00V000, LIQUIFLO
22	1	002-011-005*	TUBING, WELDED, 304SS, 1" X 0.065 WALL 16" LG.
23	1	004-010-016	VALVE CHECK, DFT 3/4" SCV-R SERIES VALVE W/ 23.5 PSI, CRACKING PRESSURE SPRING
24	1	004-022-201*	VALVE, SOFT SEAT CHECK, 3/8" NPT
25	1	005-028-001	Y-STRAINER, 1" (YSV-1)

\* FINISH BOM ITEM

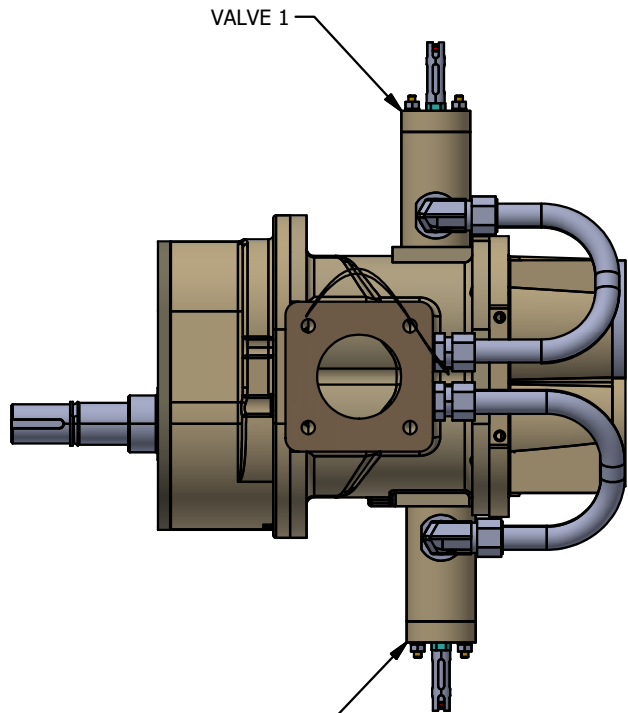


	Name: FX12V125XP-EV SCRUBBER PUMP DETAIL		Sheet: 17 of 19
	Drawn By: JUSTIN ROARK	Date: 6/6/2023	Rev #: 4
	Part #: 200-012-140	P&ID #:FX12V125XP-EV R4	
	THIS DRAWING IS PROPERTY OF FLOGISTIX AND CANNOT BE COPIED WITHOUT THE PERMISSION OF FLOGISTIX.		
	Unit Type: FX12V125XP-EV	Approval:	Approval:

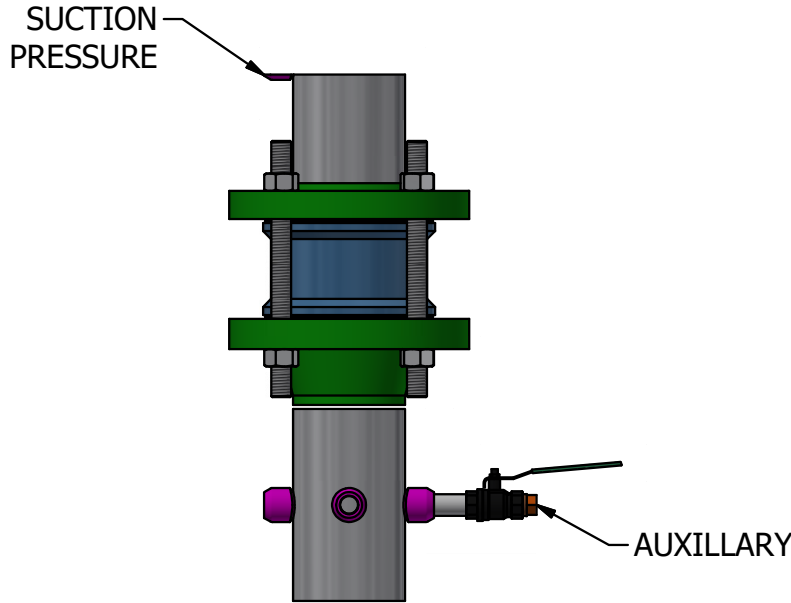




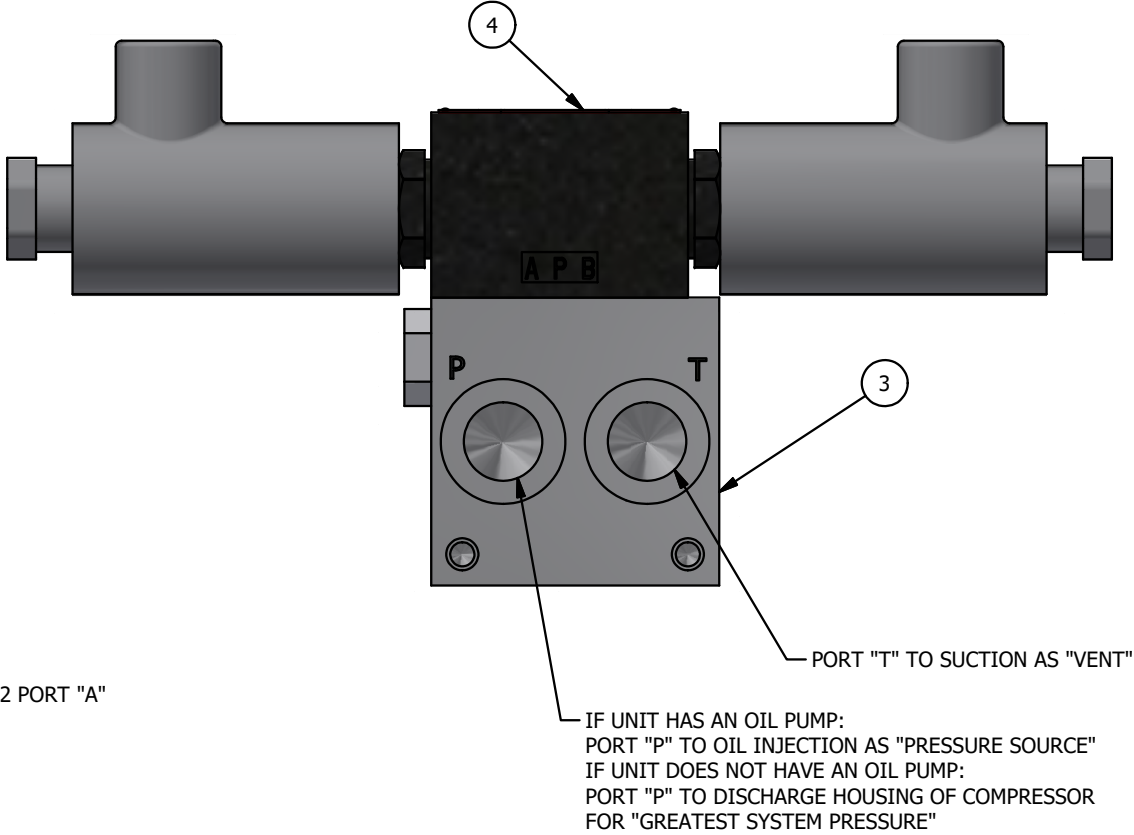
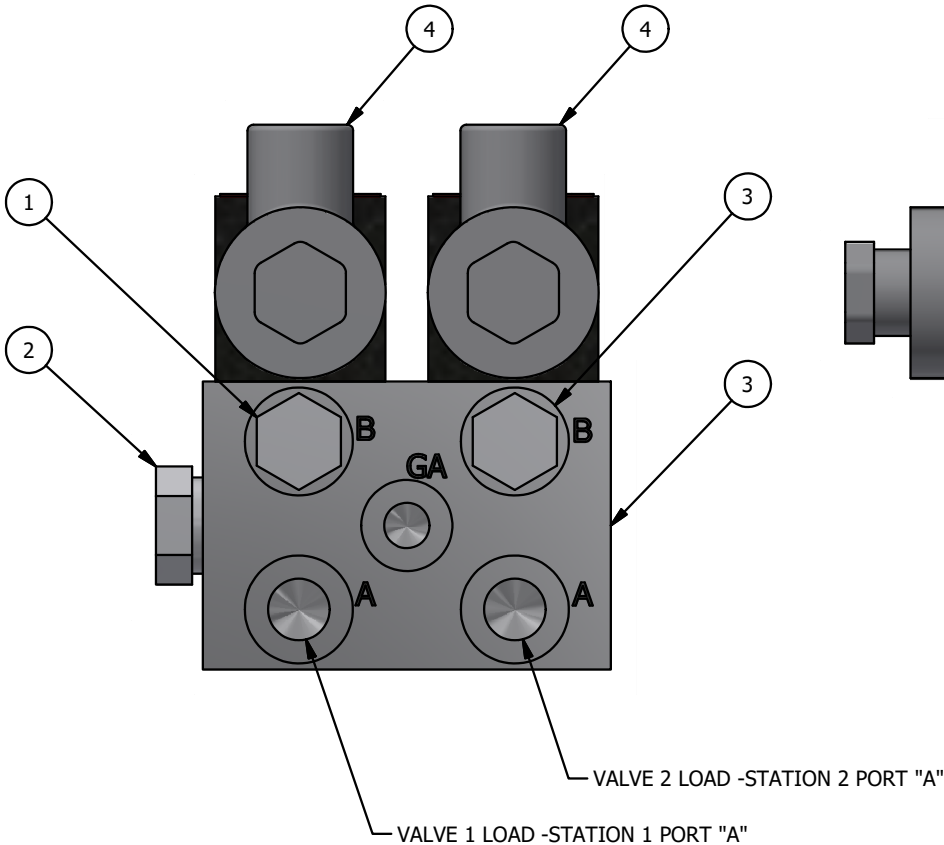
Name: FX12V125XP-EV PANEL STAND LAYOUT		Sheet: 18 of 19	
Drawn By: JUSTIN ROARK		Date: 6/6/2023	
Part #: 200-012-140		Rev #: 4	
THIS DRAWING IS PROPERTY OF FLOGISTIX AND CANNOT BE COPIED WITHOUT THE PERMISSION OF FLOGISTIX.			
Unit Type: FX12V125XP-EV		Approval:	



HG12XXXHIE COMPRESSOR  
VALVE LOCATIONS



SUCTION SPOOL



PARTS LIST			
ITEM	QTY	PART NUMBER	DESCRIPTION
1	2	020-002-080*	FITTING, MALE BOSS, PLUG, 1/2" 8MB-PLUG
2	2	020-002-010*	FITTING, MALE BOSS, PLUG, 5/8" 10MB-PLUG
3	1	005-024-022*	MANIFOLD, 2-STATION AD03P022S
4	2	004-020-395*	VALVE, DIRECTIONAL, 3 POSITION, 24VDC, C1D2 HD3-EX-024C/25

\* FINISH BOM ITEM



Name: FX12V125XP-EV SELENOID VALVE LAYOUT		Sheet: 19 of 19	
Drawn By: JUSTIN ROARK		Date: 6/6/2023	Rev #: 4
Part #: 200-012-140		P&ID #:FX12V125XP-EV R4	
THIS DRAWING IS PROPERTY OF FLOGISTIX AND CANNOT BE COPIED WITHOUT THE PERMISSION OF FLOGISTIX.			
Unit Type: FX12V125XP-EV	Approval:	Approval:	