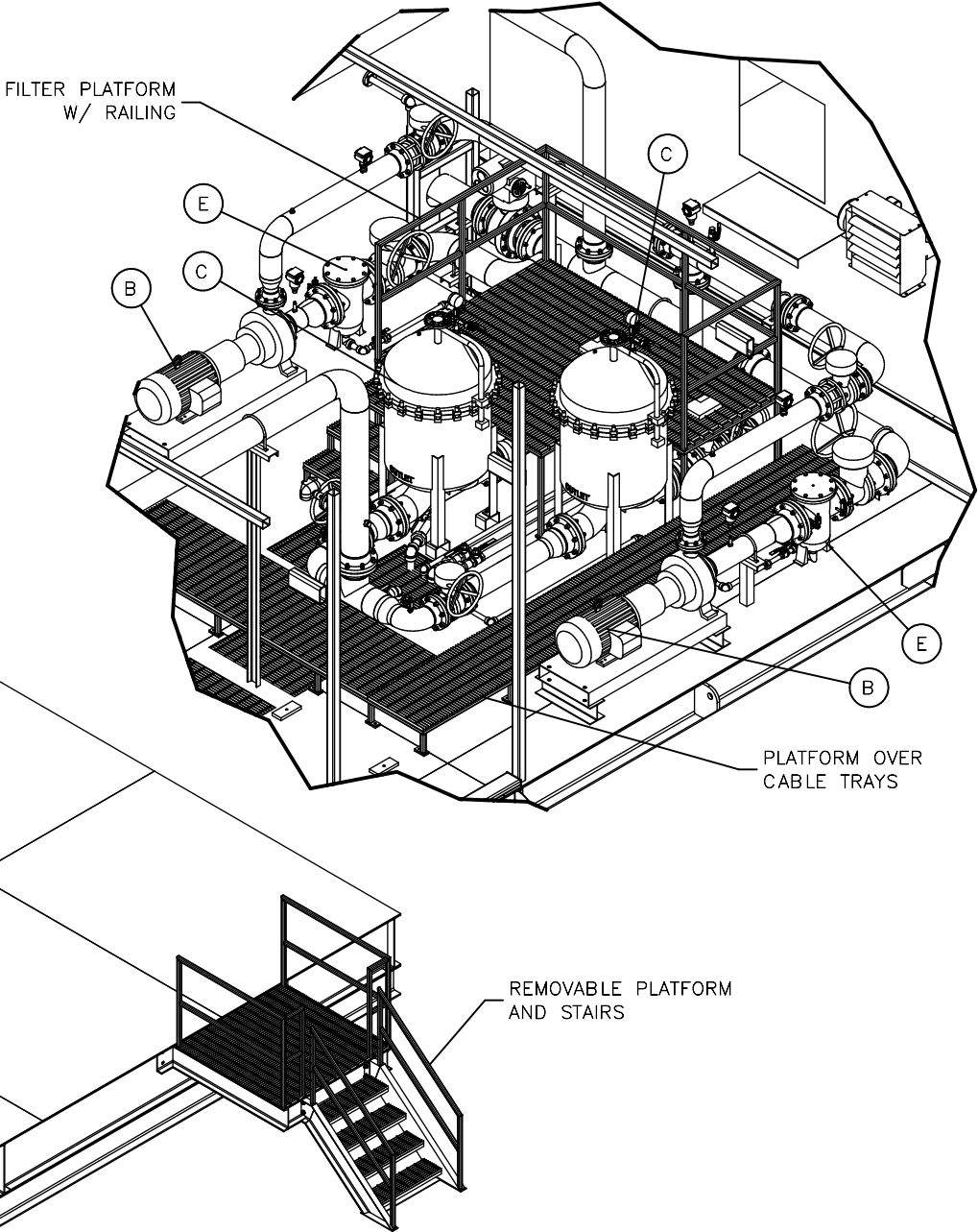
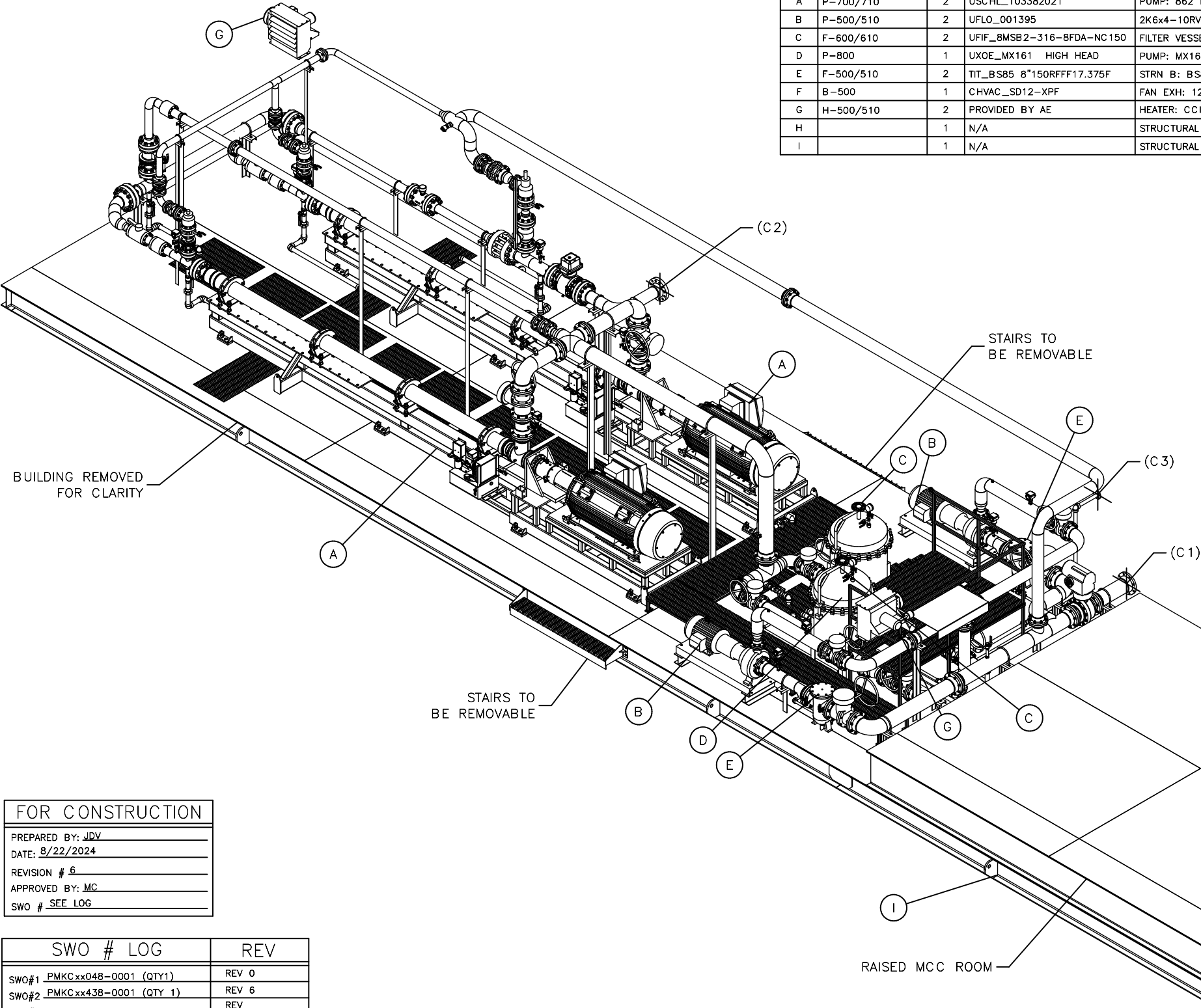


LEGEND						
ITEM	TAG#	QTY	ERP NUMBER	DESCRIPTION	VENDOR	STOCK NUMBER
A	P-700/710	2	USCHL_103382021	PUMP: 862 M520-A 800HP 460V NXR5810	REDA HPS	862 M520-A, 31STG
B	P-500/510	2	UFLO_001395	2K6x4-10RV M3 ST 30HP 1800 230/460V 286T	FLOWSERVE	2K6x4-10RV-30HP 286T
C	F-600/610	2	UFIF_BMSB2-316-8FDA-NC150	FILTER VESSEL: 8" 150#RF, 8MSB2-316-8FDA	FILTRAFINE	8MSB2-316-8FDA-NC150
D	P-800	1	UXOE_MX161 HIGH HEAD	PUMP: MX161 HIGH HEAD, 1/2HP, 3450, 115V	ZOELLER	MX161
E	F-500/510	2	TIT_BS85 8"150RFF17.375F	STRN B: BS85 8" 150# RF SS 17.375"F	TITAN	BS85-SS
F	B-500	1	CHVAC_SD12-XPF	FAN EXH: 12", 1/3HP, 115/230	CANARM	SD12-XPF
G	H-500/510	2	PROVIDED BY AE	HEATER: CCI RUFFNECK, FX5-15kW	FORCED AIR	FX5-480360-150-WTD
H		1	N/A	STRUCTURAL BUILDING STEEL: 18'-0" W x 80'-0" L w/ 3 TON CRANE & RAISED MCC	PS	MARA-INJ-BLDG-6
I		1	N/A	STRUCTURAL SKID STEEL: 18'-0" W x 80'-0" L w/ W14x43 MEMBERS & RAISED MCC	PS	MARA-INJ-STL-6



FOR CONSTRUCTION	
PREPARED BY:	JDV
DATE:	8/22/2024
REVISION #	6
APPROVED BY:	MC
SWO #	SEE LOG

SWO #	LOG	REV
SWO#1	PMKCxx048-0001 (QTY1)	REV 0
SWO#2	PMKCxx438-0001 (QTY 1)	REV 6
SWO#3		REV
SWO#4		REV
SWO#5		REV

- GENERAL NOTES
- TOTAL PACKAGE WEIGHT APPROX. ~ 169,000 LBS.
 - INTERIOR BUILDING COLOR: WHITE
 - EXTERIOR SKID AND BUILDING COLOR: SHALE GREEN
 - DECK PLATE COLOR: WHITE
 - PIPING COLOR: WHITE
 - INSULATION TO BE: 2" SPRAY FOAM UNDER SKID
 - AT ASSEMBLY ELECTRICAL TO SHOP FIT GROUNDING SERVIT POST LOCATIONS. TYP. 2 PLACES
 - DRAIN LINES RAN TO BACK OF DRAIN PAN SO CUSTOMER CAN REMOVE GRATING EASILY

REVISION HISTORY					
REV	DATE	DESIGN	DESCRIPTION	CHECK	APPROV
6	8/22/2024	JDV	FOR CONSTRUCTION	CLC	MC
5	8/2/2024	JDV	UPDATED FOR APPROVAL	CLC	MC
4	7/3/2024	JDV	FOR APPROVAL	CLC	MC
3	9/29/2023	JDV	ADDED C.O.G.	CLC	MC
2	6/16/2023	JDV	REVISED SPLs/PROJECTION	CLC	MC

NOTICE: This drawing has not been published but rather has been prepared for MARATHON OIL by Power Service solely in respect of the construction, operation, and maintenance of the facility named in the title block and shall not be used for any other purpose or furnished to any other party, without the express written consent of Power Service.

MARA-INJ-PID-6	PROCESS DIAGRAM
DWG NO.	TITLE
REFERENCE DRAWINGS	



CASPER, WY 82401 (307) 472-7722

THIS DRAWING IS THE PROPERTY OF POWER SERVICE, A DISTRIBUTION NOW COMPANY, CASPER, WY	
CUSTOMER	
MARATHON OIL	
GENERAL ARRANGEMENT	
40,000 BPD SALT WATER DISPOSAL	
20,000 BPD EACH PMP @ 1500 PSIG	
19'-3" OAWx81'-10 5/8" OALx14'-9 5/8" OAH	
SCALE: ref. VIEW	SHEET: 1 of 4
PROJECT NO. SEE LOG	DWG. NO. MARA-INJ-LO-6
DATE DWN. 11/10/2022	REV. 6

FOR CONSTRUCTION

PREPARED BY: JDV

DATE: 8/22/2024

REVISION # 6

APPROVED BY: MC

SWO # SEE LOG

SWO # LOG

REV

SWO#1 PMKCxx048-0001 (QTY1)

REV 0

SWO#2 PMKCxx438-0001 (QTY 1)

REV 6

SWO#3

REV

SWO#4

REV

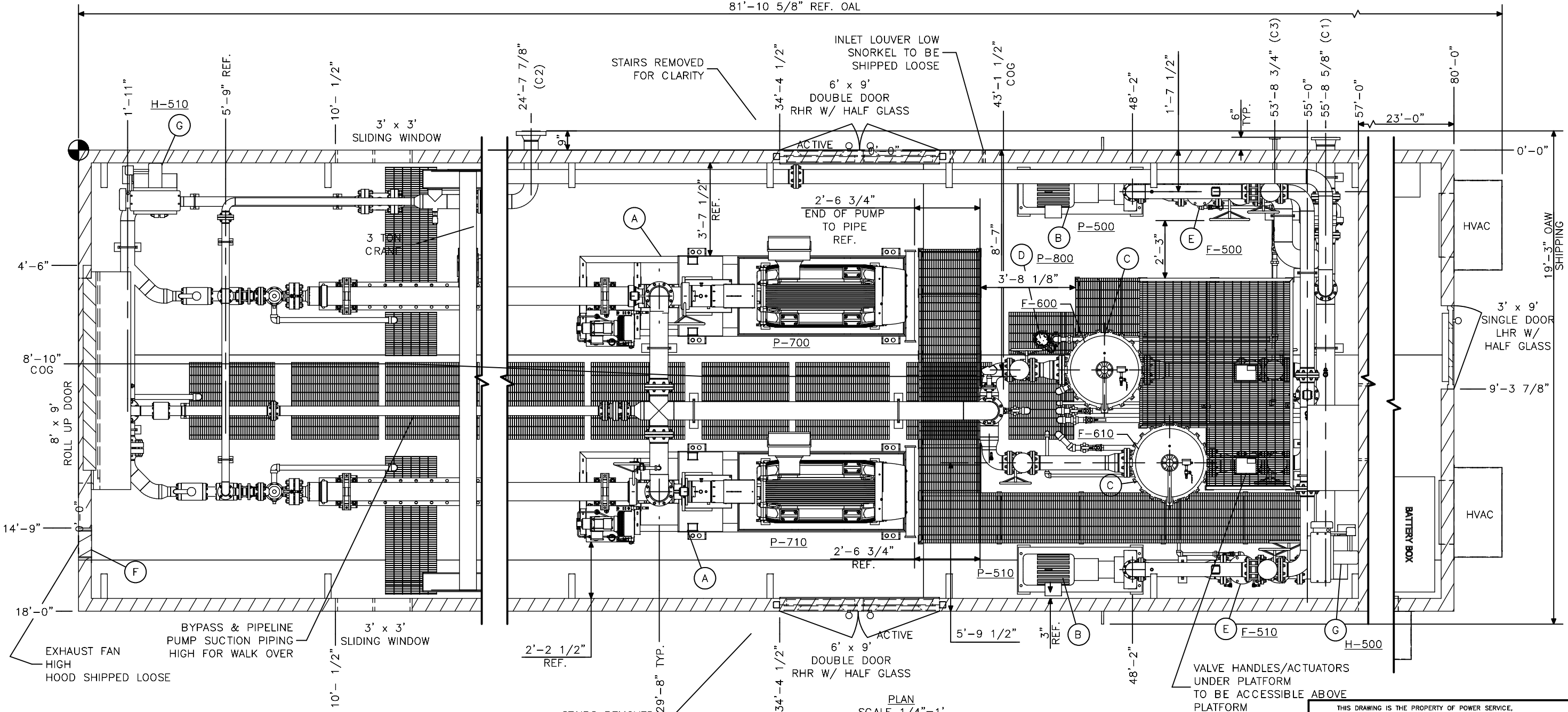
SWO#5

REV

LEGEND

ITEM	TAG#	QTY	ERP NUMBER	DESCRIPTION	VENDOR	STOCK NUMBER
A	P-700/710	2	USCHL_103382021	PUMP: 862 M520-A 800HP 460V NXR5810	REDA HPS	862 M520-A, 31STG
B	P-500/510	2	UFLO_001395	2K6x4-10RV M3 ST 30HP 1800 230/460V 286T	FLOWERVE	2K6x4-10RV-30HP 286T
C	F-600/610	2	UFIF_8MSB2-316-8FDA-NC150	FILTER VESSEL: 8" 150#RF, 8MSB2-316-8FDA	FILTRAFINE	8MSB2-316-8FDA-NC150
D	P-800	1	UXOE_MX161 HIGH HEAD	PUMP: MX161 HIGH HEAD, 1/2HP, 3450, 115V	ZOELLER	MX161
E	F-500/510	2	TIT_BS85 8"150RFF17.375F	STRN B: BS85 8" 150# RF SS 17.375"F	TITAN	BS85-SS
F	B-500	1	CHVAC_SD12-XPF	FAN EXH: 12", 1/3HP, 115/230	CANARM	SD12-XPF
G	H-500/510	2	PROVIDED BY AE	HEATER: CCI RUFFNECK, FX5-15kW	FORCED AIR	FX5-480360-150-WTD
H		1	N/A	STRUCTURAL BUILDING STEEL: 18'-0" W x 80'-0" L w/ 3 TON CRANE & RAISED MCC	PS	MARA-INJ-BLDG-6
I		1	N/A	STRUCTURAL SKID STEEL: 18'-0" W x 80'-0" L w/ W14x43 MEMBERS & RAISED MCC	PS	MARA-INJ-STL-6

81'-10 5/8" REF. OAL



GENERAL NOTES

- 1.) TOTAL PACKAGE WEIGHT APPROX. ~ 169,000 LBS.
- 2.) INTERIOR BUILDING COLOR: WHITE
- 3.) EXTERIOR SKID AND BUILDING COLOR: SHALE GREEN
- 4.) DECK PLATE COLOR: WHITE
- 5.) PIPING COLOR: WHITE
- 6.) INSULATION TO BE: 2" SPRAY FOAM UNDER SKID
- 7.) AT ASSEMBLY ELECTRICAL TO SHOP FIT GROUNDING SERVIT POST LOCATIONS. TYP. 2 PLACES
- 8.) DRAIN LINES RAN TO BACK OF DRAIN PAN SO CUSTOMER CAN REMOVE GRATING EASILY

REVISION HISTORY

REV	DATE	DESIGN	DESCRIPTION	CHECK	APPROV
6	8/22/2024	JDV	FOR CONSTRUCTION	CLC	MC
5	8/2/2024	JDV	UPDATED FOR APPROVAL	CLC	MC
4	7/3/2024	JDV	FOR APPROVAL	CLC	MC
3	9/29/2023	JDV	ADDED C.O.G.	CLC	MC
2	6/16/2023	JDV	REVISED SPLS/PROJECTION	CLC	MC

NOTICE: This drawing has not been published but rather has been prepared for MARATHON OIL by Power Service solely in respect of the construction, operation, and maintenance of the facility named in the title block and shall not be used for any other purpose or furnished to any other party, without the express written consent of Power Service.

MARA-INJ-PID-6	PROCESS DIAGRAM
DWG NO.	TITLE
REFERENCE DRAWINGS	



THIS DRAWING IS THE PROPERTY OF POWER SERVICE, A DISTRIBUTION NOW COMPANY. CASPER, WY

CUSTOMER

MARATHON OIL

GENERAL ARRANGEMENT

40,000 BPD SALT WATER DISPOSAL
20,000 BPD EACH PMP @ 1500 PSIG
19'-3" OAWx81'-10 5/8" OALx14'-9 5/8" OAH

DWG NO.	TITLE	DWN BY	CHK'D BY	APP'D BY	ENGINEER	DATE DWN.	SCALE	SHEET	PROJECT NO.	DWG NO.	REV.
REFERENCE DRAWINGS		JDV	CLC	MC		11/10/2022	ref. VIEW	2 of 4	SEE LOG	MARA-INJ-LO-6	6

FOR CONSTRUCTION

PREPARED BY: JDV

DATE: 8/22/2024

REVISION # 6

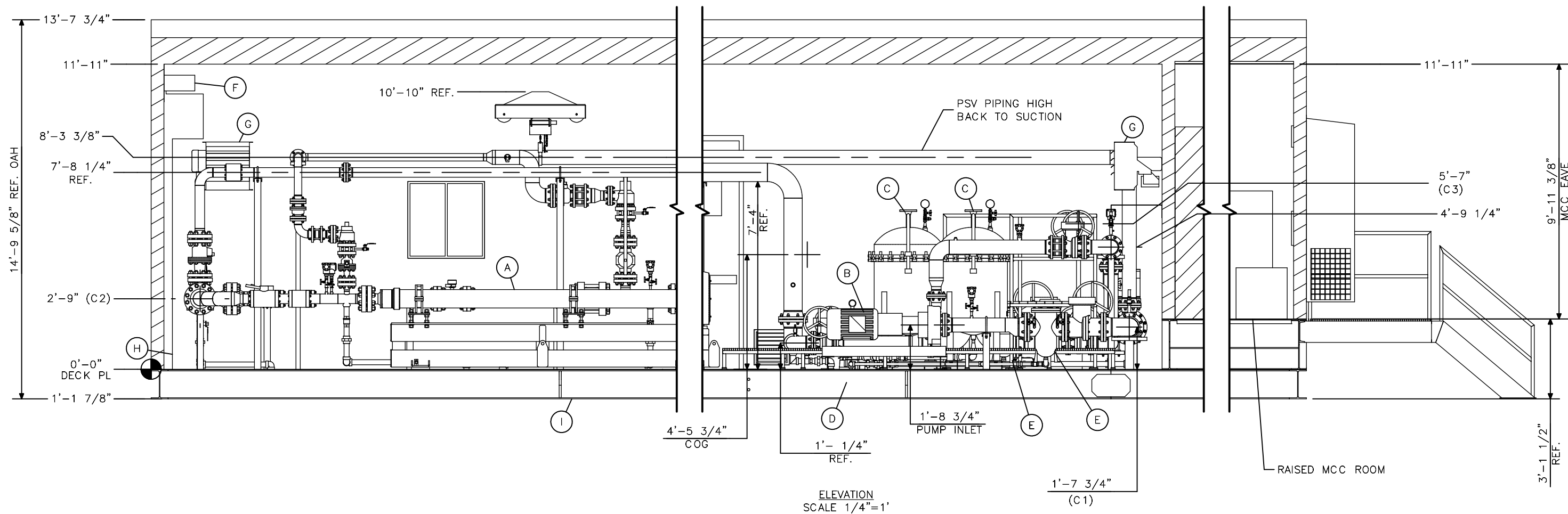
APPROVED BY: MC

SWO # SEE LOG

SWO #	LOG	REV
SWO#1	PMKCxx048-0001 (QTY1)	REV 0
SWO#2	PMKCxx438-0001 (QTY 1)	REV 6
SWO#3		REV
SWO#4		REV
SWO#5		REV

LEGEND

ITEM	TAG#	QTY	ERP NUMBER	DESCRIPTION	VENDOR	STOCK NUMBER
A	P-700/710	2	USCHL_103382021	PUMP: 862 M520-A 800HP 460V NXR5810	REDA HPS	862 M520-A, 31STG
B	P-500/510	2	UFLO_001395	2K6x4-10RV M3 ST 30HP 1800 230/460V 286T	FLOWERVE	2K6x4-10RV-30HP 286T
C	F-600/610	2	UFIF_8MSB2-316-8FDA-NC150	FILTER VESSEL: 8" 150#RF, 8MSB2-316-8FDA	FILTRAFINE	8MSB2-316-8FDA-NC150
D	P-800	1	UXOE_MX161 HIGH HEAD	PUMP: MX161 HIGH HEAD, 1/2HP, 3450, 115V	ZOELLER	MX161
E	F-500/510	2	TIT_BS85 8"150RFF17.375F	STRN B: BS85 8" 150# RF SS 17.375"F	TITAN	BS85-SS
F	B-500	1	CHVAC_SD12-XPF	FAN EXH: 12", 1/3HP, 115/230	CANARM	SD12-XPF
G	H-500/510	2	PROVIDED BY AE	HEATER: CCI RUFFNECK, FX5-15kW	FORCED AIR	FX5-480360-150-WTD
H		1	N/A	STRUCTURAL BUILDING STEEL: 18'-0" W x 80'-0" L w/ 3 TON CRANE & RAISED MCC	PS	MARA-INJ-BLDG-6
I		1	N/A	STRUCTURAL SKID STEEL: 18'-0" W x 80'-0" L w/ W14x43 MEMBERS & RAISED MCC	PS	MARA-INJ-STL-6

ELEVATION
SCALE 1/4"=1'

GENERAL NOTES

- TOTAL PACKAGE WEIGHT APPROX. ~ 169,000 LBS.
- INTERIOR BUILDING COLOR: WHITE
- EXTERIOR SKID AND BUILDING COLOR: SHALE GREEN
- DECK PLATE COLOR: WHITE
- PIPING COLOR: WHITE
- INSULATION TO BE: 2" SPRAY FOAM UNDER SKID
- AT ASSEMBLY ELECTRICAL TO SHOP FIT GROUNDING SERVIT POST LOCATIONS. TYP. 2 PLACES
- DRAIN LINES RAN TO BACK OF DRAIN PAN SO CUSTOMER CAN REMOVE GRATING EASILY

REVISION HISTORY

REV	DATE	DESIGN	DESCRIPTION	CHECK	APPROV
6	8/22/2024	JDV	FOR CONSTRUCTION	CLC	MC
5	8/2/2024	JDV	UPDATED FOR APPROVAL	CLC	MC
4	7/3/2024	JDV	FOR APPROVAL	CLC	MC
3	9/29/2023	JDV	ADDED C.O.G.	CLC	MC
2	6/16/2023	JDV	REVISED SPLS/PROJECTION	CLC	MC

NOTICE: This drawing has not been published but rather has been prepared for MARATHON OIL by Power Service solely in respect of the construction, operation, and maintenance of the facility named in the title block and shall not be used for any other purpose or furnished to any other party, without the express written consent of Power Service.

MARA-INJ-PID-6	PROCESS DIAGRAM
DWG NO.	TITLE
REFERENCE DRAWINGS	

CASPER, WY 82401
(307) 472-7722

THIS DRAWING IS THE PROPERTY OF POWER SERVICE, A DISTRIBUTIONNOW COMPANY, CASPER, WY

CUSTOMER

MARATHON OIL

GENERAL ARRANGEMENT

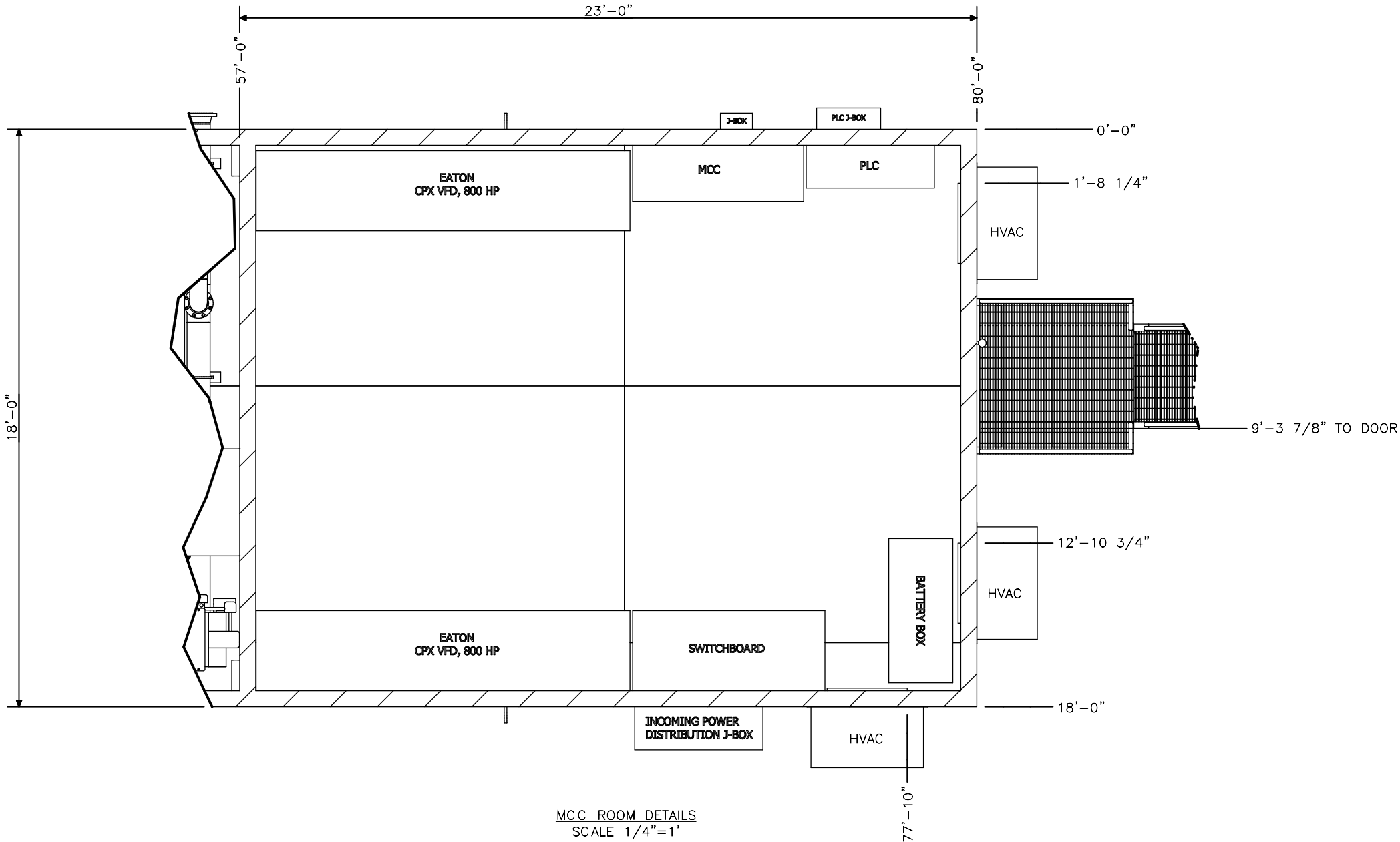
40,000 BPD SALT WATER DISPOSAL
20,000 BPD EACH PMP @ 1500 PSIG
19'-3" OAWx81'-10 5/8" OALx14'-9 5/8" OAH

DWG NO.	TITLE	DWN BY	CHK'D BY	APP'D BY	ENGINEER	DATE DWN.	SCALE:	SHEET:	PROJECT NO.	DWG. NO.	REV.
ref. VIEW	3 of 4	JDV	CLC	MC		11/10/2022	ref. VIEW	3 of 4	SEE LOG	MARA-INJ-L0-6	6

FOR CONSTRUCTION
PREPARED BY: JDV
DATE: 8/22/2024
REVISION # 6
APPROVED BY: MC
SWO # SEE LOG

SWO #	LOG	REV
SWO#1	PMKCxx048-0001 (QTY1)	REV 0
SWO#2	PMKCxx438-0001 (QTY 1)	REV 6
SWO#3		REV
SWO#4		REV
SWO#5		REV

LEGEND						
ITEM	TAG#	QTY	ERP NUMBER	DESCRIPTION	VENDOR	STOCK NUMBER
A	P-700/710	2	USCHL_103382021	PUMP: 862 M520-A 800HP 460V NXR5810	REDA HPS	862 M520-A, 31STG
B	P-500/510	2	UFLO_001395	2K6x4-10RV M3 ST 30HP 1800 230/460V 286T	FLOWSERVE	2K6x4-10RV-30HP 286T
C	F-600/610	2	UFIF_8MSB2-316-8FDA-NC150	FILTER VESSEL: 8" 150#RF, 8MSB2-316-8FDA	FILTRAFINE	8MSB2-316-8FDA-NC150
D	P-800	1	UXOE_MX161 HIGH HEAD	PUMP: MX161 HIGH HEAD, 1/2HP, 3450, 115V	ZOELLER	MX161
E	F-500/510	2	TIT_BS85 8"150RFFF17.375F	STRN B: BS85 8" 150# RF SS 17.375"F	TITAN	BS85-SS
F	B-500	1	CHVAC_SD12-XPF	FAN EXH: 12", 1/3HP, 115/230	CANARM	SD12-XPF
G	H-500/510	2	PROVIDED BY AE	HEATER: CCI RUFFNECK, FX5-15kW	FORCED AIR	FX5-480360-150-WTD
H		1	N/A	STRUCTURAL BUILDING STEEL: 18'-0" W x 80'-0" L w/ 3 TON CRANE & RAISED MCC	PS	MARA-INJ-BLDG-6
I		1	N/A	STRUCTURAL SKID STEEL: 18'-0" W x 80'-0" L w/ W14x43 MEMBERS & RAISED MCC	PS	MARA-INJ-STL-6



MCC ROOM DETAILS
SCALE 1/4"=1'

GENERAL NOTES

- TOTAL PACKAGE WEIGHT APPROX. ~ 169,000 LBS.
- INTERIOR BUILDING COLOR: WHITE
- EXTERIOR SKID AND BUILDING COLOR: SHALE GREEN
- DECK PLATE COLOR: WHITE
- PIPING COLOR: WHITE
- INSULATION TO BE: 2" SPRAY FOAM UNDER SKID
- AT ASSEMBLY ELECTRICAL TO SHOP FIT GROUNDING SERVIT POST LOCATIONS. TYP. 2 PLACES
- DRAIN LINES RAN TO BACK OF DRAIN PAN SO CUSTOMER CAN REMOVE GRATING EASILY

REVISION HISTORY					
REV	DATE	DESIGN	DESCRIPTION	CHECK	APPROV
6	8/22/2024	JDV	FOR CONSTRUCTION	CLC	MC
5	8/2/2024	JDV	UPDATED FOR APPROVAL	CLC	MC
4	7/3/2024	JDV	FOR APPROVAL	CLC	MC
3	9/29/2023	JDV	ADDED C.O.G.	CLC	MC
2	6/16/2023	JDV	REVISED SPLs/PROJECTION	CLC	MC

NOTICE: This drawing has not been published but rather has been prepared for MARATHON OIL by Power Service solely in respect of the construction, operation, and maintenance of the facility named in the title block and shall not be used for any other purpose or furnished to any other party, without the express written consent of Power Service.

MARA-INJ-PID-6	PROCESS DIAGRAM
DWG NO.	TITLE
REFERENCE DRAWINGS	



THIS DRAWING IS THE PROPERTY OF POWER SERVICE, A DISTRIBUTION NOW COMPANY, CASPER, WY	
CUSTOMER MARATHON OIL	
GENERAL ARRANGEMENT 40,000 BPD SALT WATER DISPOSAL 20,000 BPD EACH PMP @ 1500 PSIG 19'-3" OAWx81'-10 5/8" OALx14'-9 5/8" OAH	
DWG NO. MARA-INJ-L0-6	REV. 6