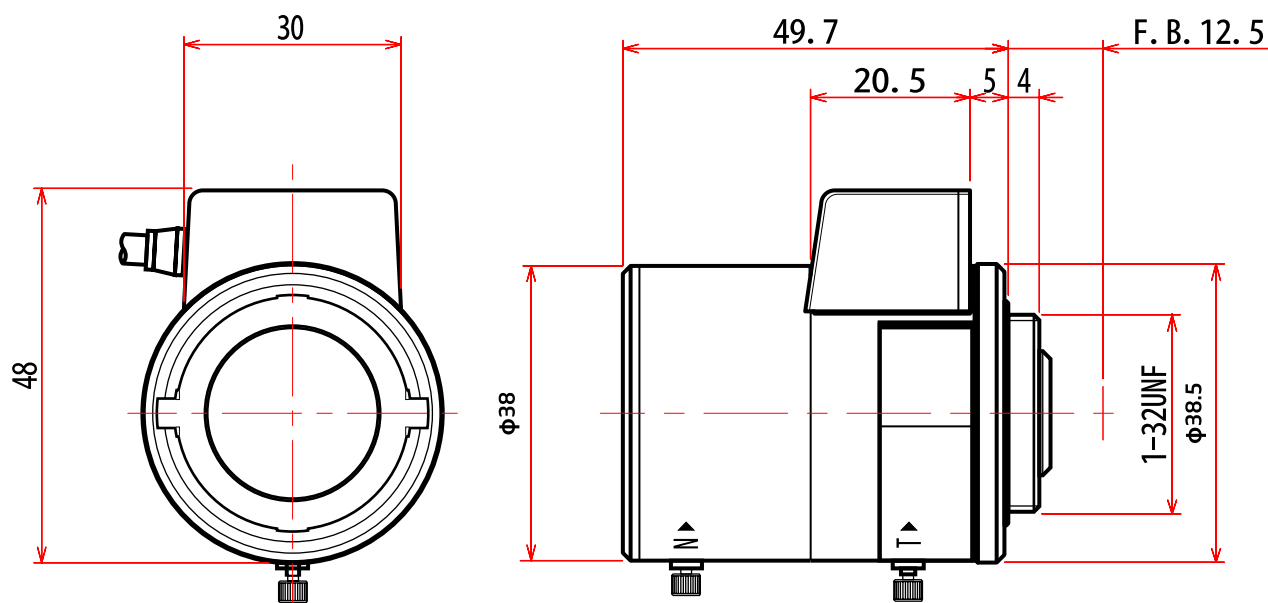


Compatible with 1/3" Cameras

## F0.95 Aspherical + Day&Night IR Lens

<b>Flange Back</b>	12.5 mm
<b>Operation Voltage</b>	Close to Open : Less than 4.0V Open to Close : More than 0.5V
<b>Operation</b>	Manual
<b>Focus</b>	
<b>Zoom</b>	Manual
<b>Iris</b>	IG (Auto Close System)
<b>Operation Temperature</b>	- 10 °C ~ 50 °C / 14 °F ~ 122 °F
<b>Mount</b>	CS-Mount (Adjustable Lens Position)
<b>Size, Weight</b>	Ø38 x 48(W) x 49.7(D) mm, Approx. 64g

## UNIT: mm



Iris Cable

Pin	Color	Signal	Resistance
1	BLK	Damp -	700 ohm
2	WHT	Damp +	
3	RED	Drive +	200 ohm
4	GRN	Drive -	

Lens