

CHEMICAL TANK

5'-2" ID x 11'-11" LENGTH
VOL. = 2000 GAL.CHEMICAL
CALIBRATION POT

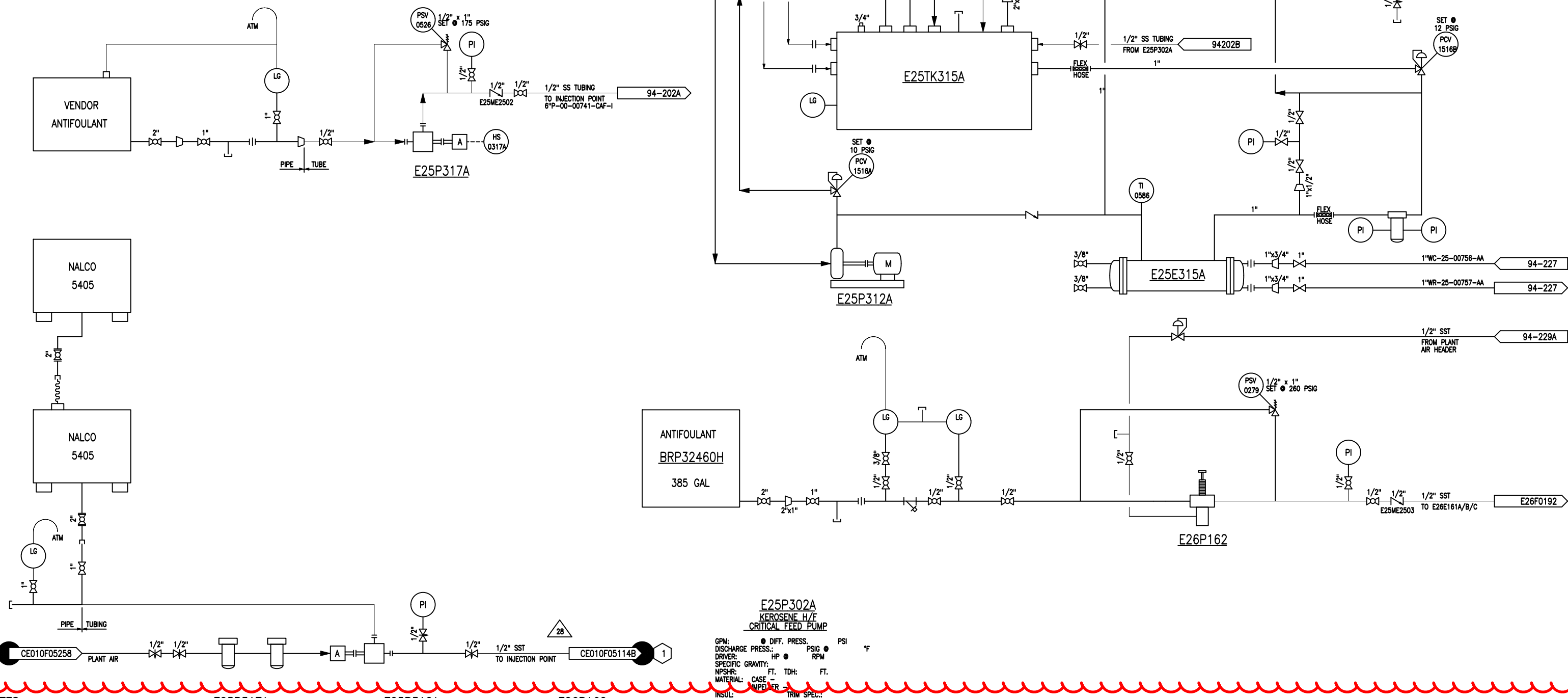
2'-6" ID x 3'-0" HT

CHEMICAL TANK

4'-0" ID x 11'-6" HT

E25TK315A
LUBE OIL RESERVOIRSIZE: X PSIG
DESIGN: PSIG
MAWP: PSIG
MATERIAL: PSIG
CAPACITY: PSIG
PWHT: PSIG
INSULATION: PSIGE25E315A
LUBE OIL COOLERDUTY: MMBTU/HR
DESIGN: SHELL: PSIG
TUBES: PSIG
MAWP: SHELL: PSIG
MATERIAL: PSIG
CAPACITY: PSIG
PWHT: PSIG
INSULATION: PSIG

Out of Service



NOTES:

- ALL INSTRUMENT TAGS ARE PREFIXED BY "E25", UNLESS OTHERWISE NOTED.
- LUBE OIL SYSTEM IS TYPICAL FOR E25P302A.
- LDAR INFORMATION HAS BEEN ADDED TO THIS DWG. TO VIEW, TURN ON LDAR LAYERS.

E25P317A
ANTIFOILANT ELECTRICAL
CHEMICAL INJECTION PUMP AGPM: 2.0 • DIFF. PRESS. 100 PSI
DISCHARGE PRESS.: PSIG
DRIVER: HP • RPM
SPECIFIC GRAVITY: FT. TDH: FT.
NPSHR: CASE - IMPELLER -
INSUL: TRIM SPEC.:
NEPTUNE MODEL 520-VS-N3
MAX RATE: 2.0 GPH 2100 PSIE25P312A
AUXILIARY LUBE
OIL PUMPGPM: • DIFF. PRESS. PSI
DISCHARGE PRESS.: PSIG
DRIVER: HP • RPM
SPECIFIC GRAVITY: FT. TDH: FT.
NPSHR: CASE - IMPELLER -
INSUL: TRIM SPEC.:E26P162
ANTIFOILANT PNEUMATIC
INJECTION PUMPGPM: 2.3 • DIFF. PRESS. 100 PSI
DISCHARGE PRESS.: PSIG
DRIVER: HP • RPM
SPECIFIC GRAVITY: FT. TDH: FT.
NPSHR: CASE - IMPELLER -
INSUL: TRIM SPEC.:E25P302A
KEROSENE H/F
CRITICAL FEED PUMPGPM: • DIFF. PRESS. PSI
DISCHARGE PRESS.: PSIG
DRIVER: HP • RPM
SPECIFIC GRAVITY: FT. TDH: FT.
NPSHR: CASE - IMPELLER -
INSUL: TRIM SPEC.:

REV.	DATE	DESCRIPTION	DRWN	CHK'D	APR'D
29	03/30/20	ADDED LDAR INFO AS PER W03622270, wood	DL	JG	
28	01/29/20	REVISED AS PER TASK 1389, wood	CY	CC	
27	05/08/19	REVISED AS PER CC539505 (E10-OFFSITES-LIGHT OILS-OSBL), wood	JA	CC	
26	03/06/19	REVISED AS PER CC539505 (OSBL UPDATES), wood	JW	CC	
25	10/02/18	REVISED AS PER REDLINES FROM WENDY EVANS, wood	JW	HS	
24	04/21/16	REVISED AS PER MOC 15533, WOOD GROUP	EH	TK	ODP

DRAWING NO.	DESCRIPTION
94-221	KEROSENE HDS (DHT-K) UNIT P&ID CHEMICAL INJECTION SYSTEMS (E25P317A/E25TK315A/E25P302A/E25E315A/E25P312A/E26P162)

PROJ. NO:	CC449301
DWG. NO:	94-221
DATE:	05/26/15
SCALE:	NONE

FLINT HILLS RESOURCES CORPUS CHRISTI COMPLEX
--