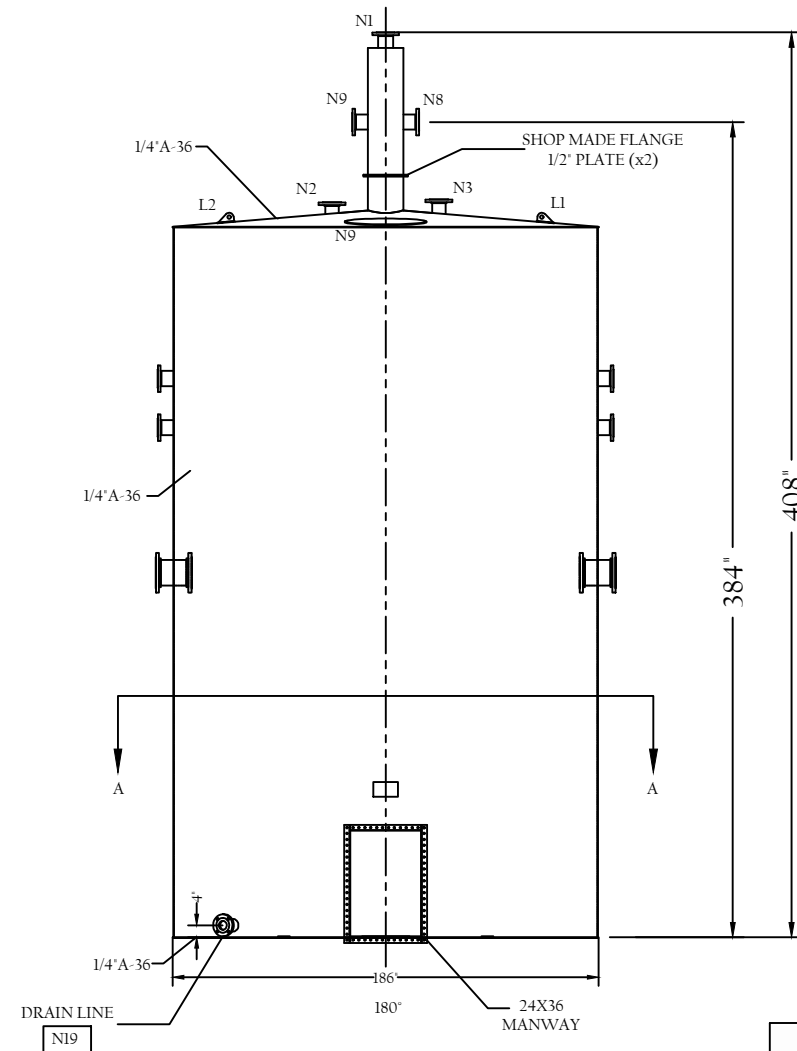
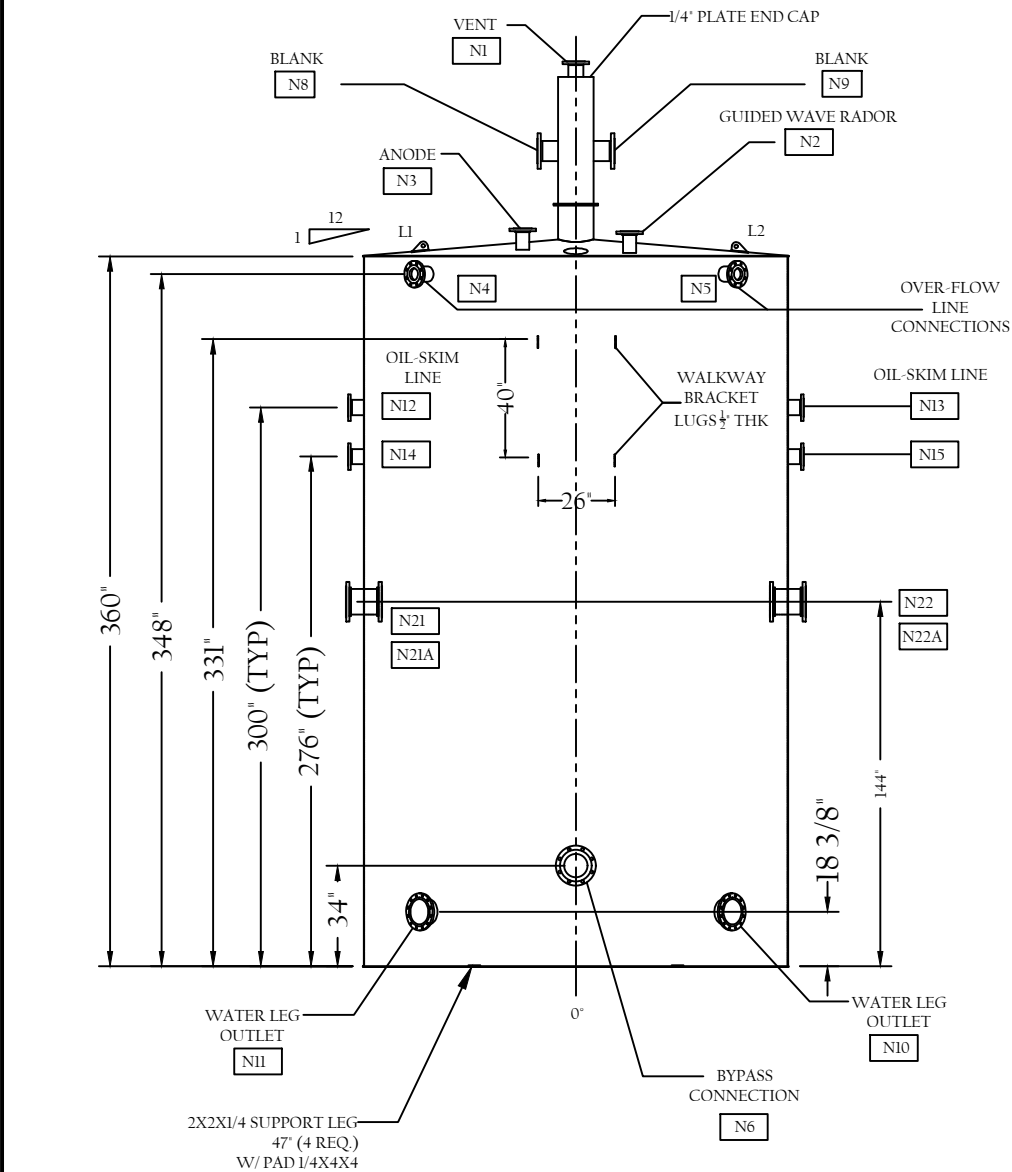


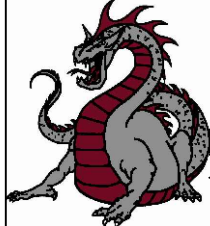
TABLE 1 -- DESIGN DATA			
(1)		(2)	
NOMINAL CAPACITY (BBL)		DESIGN PRESSURE (GZ/SQ. IN)	
		PRESS.	VAC.
1000		16	1/2

ADDITIONAL TANK DESIGN DATA: DIA - 15'6" DD  
HEIGHT - 30'0"  
CODE - API 12F  
SHELL, ROOF, AND FLOOR MATERIAL - A-36 STEEL  
FLOOR THICKNESS - 3/8" PLATE  
ROOF AND SHELL THICKNESS - 1/4" PLATE

NOTE:  
ALL ELEVATIONS ARE MEASURED FROM THE TOP OF THE FLOOR PLATE TO THE GIVEN DIMENSION

NOZZLE LEGEND				
NOZZLE #	SIZE	PROJECTION	TYPE	SERVICE
N1	6"	6"	RFSO	VENT
N2	4"	6"	RFSO	GUIDED WAVE RADOR
N3	4"	6"	RFSO	ANODE
N4	6"	6"	RFSO	OVERFLOW
N5	6"	6"	RFSO	OVERFLOW
N6	8"	6"	RFSO	BYPASS
N7	8"	6"	SHOP MADE	THIEF HATCH
N8	8"	6"	RFSO	BLANK
N9	8"	6"	RFSO	BLANK
N10	8"	6"	RFSO	WATER LEG
N11	8"	6"	RFSO	WATERLEG
N12	4"	6"	RFSO	OIL SKIM LINE
N13	4"	6"	RFSO	OIL SKIM LINE
N14	4"	6"	RFSO	OIL SKIM LINE
N15	4"	6"	RFSO	OIL SKIM LINE
N16	20"	8 1/2"	SHOP MADE	EMERGENCY VENT
N17	4"	6"	RFSO	WATER LEG VENT INLET
N18	4"	6"	RFSO	WATER LEG VENT INLET
N19	3"	6"	RFSO	DRAIN
N20	4"	6"	RFSO	ANODE
N21	8"	6"	RFSO	INLET
N21A	8"	6"	RFSO	INLET (INTERNAL)
N22	8"	6"	RFSO	INLET
N22A	8"	6"	RFSO	INLET (INTERNAL)
M1	24"X36"	1 3/4" MIN.	-	MANWAY





DRAGON PRODUCTS, LTD.

JOB NO. P3365

THIS DRAWING AND INFORMATION CONTAINED HEREIN IS THE PROPERTY OF DRAGON PRODUCTS, LTD. AND CANNOT BE COPIED OR REPRODUCED WITHOUT THE WRITTEN CONSENT OF DRAGON PRODUCTS, LTD.

BEAUMONT TEXAS

1000BBL GUNBARREL TANK

SALES DRAWING

DR. JGM CH. - APP. GRM

SCALE NTS

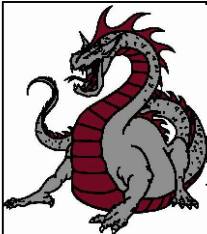
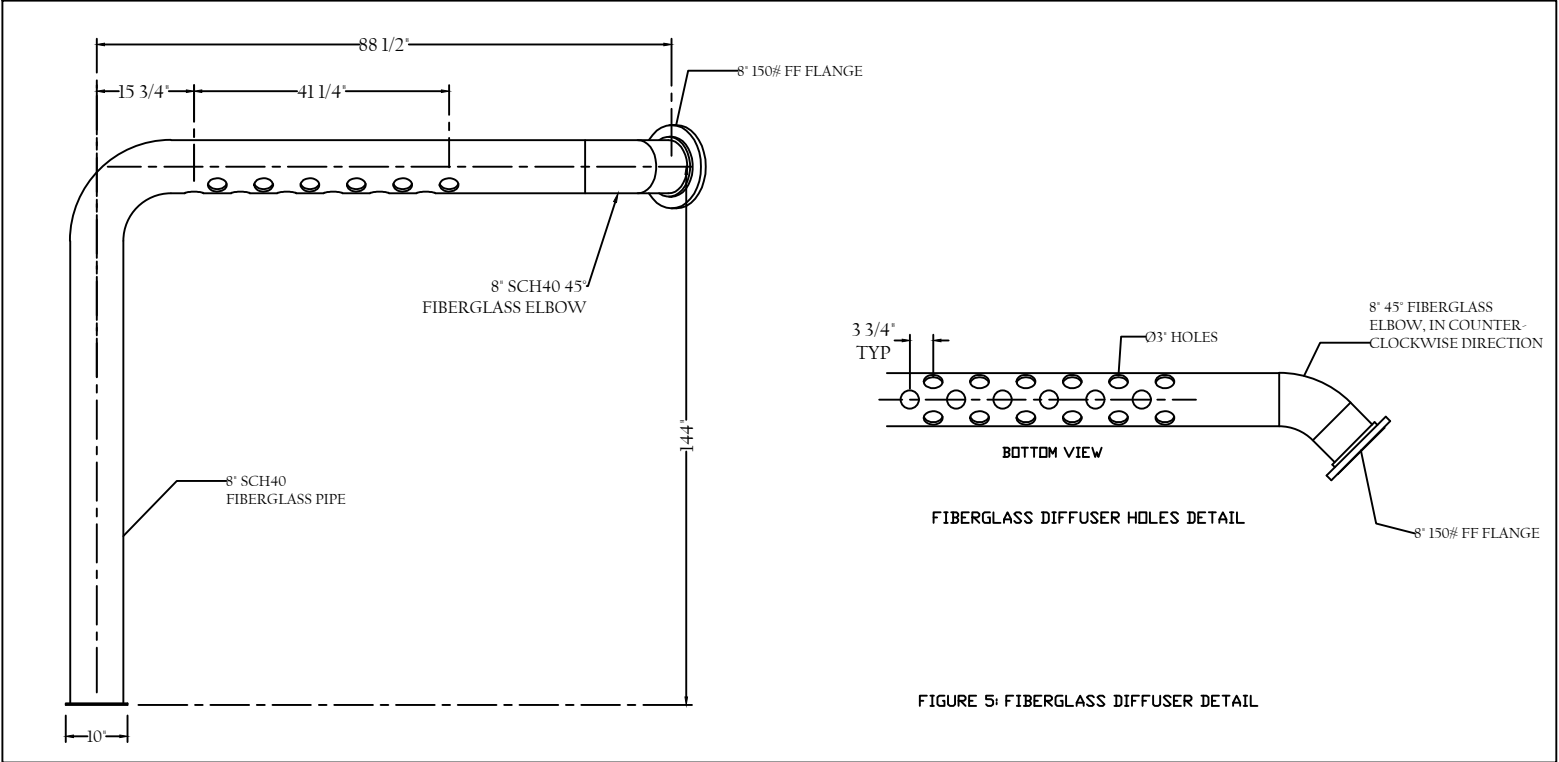
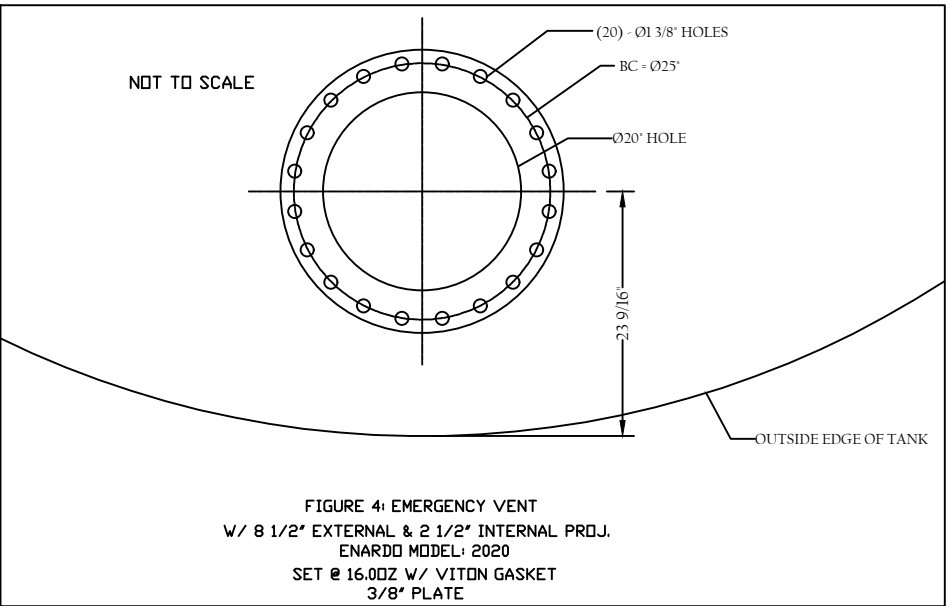
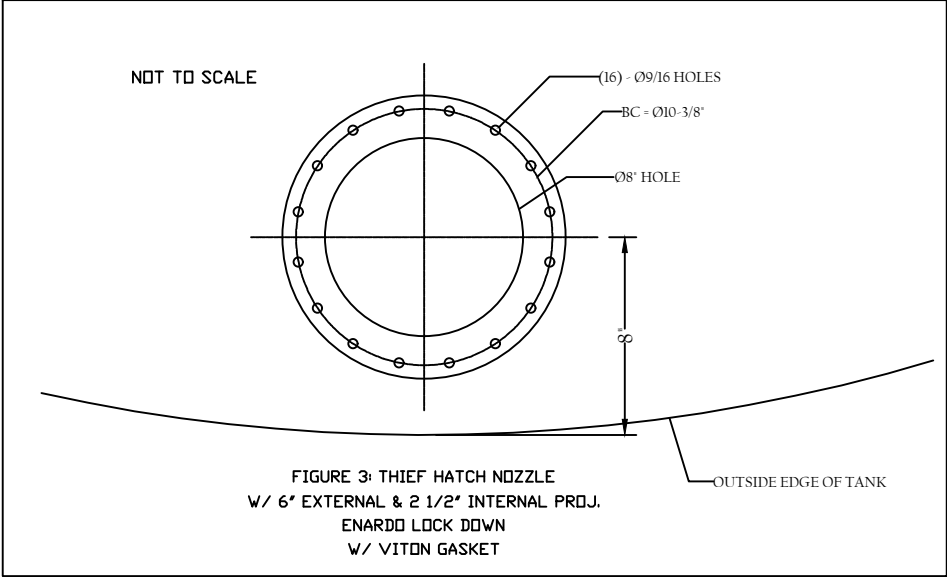
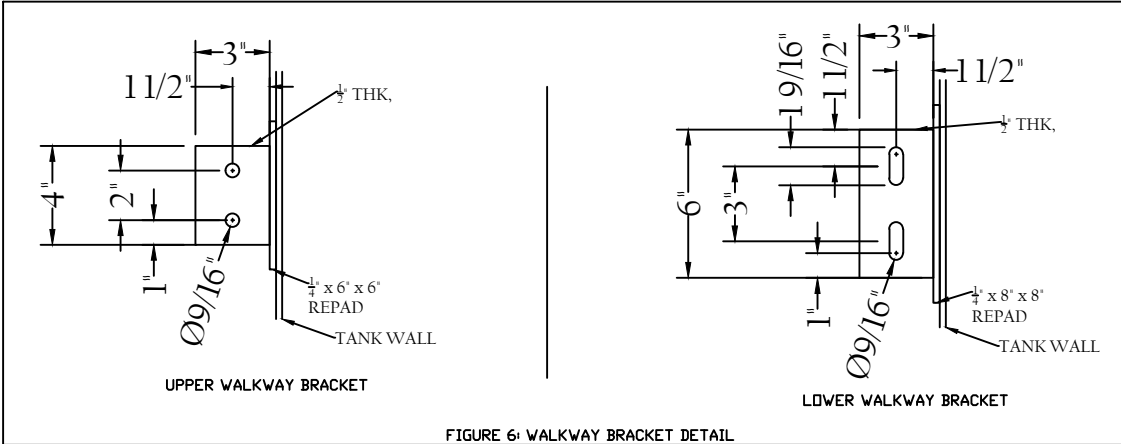
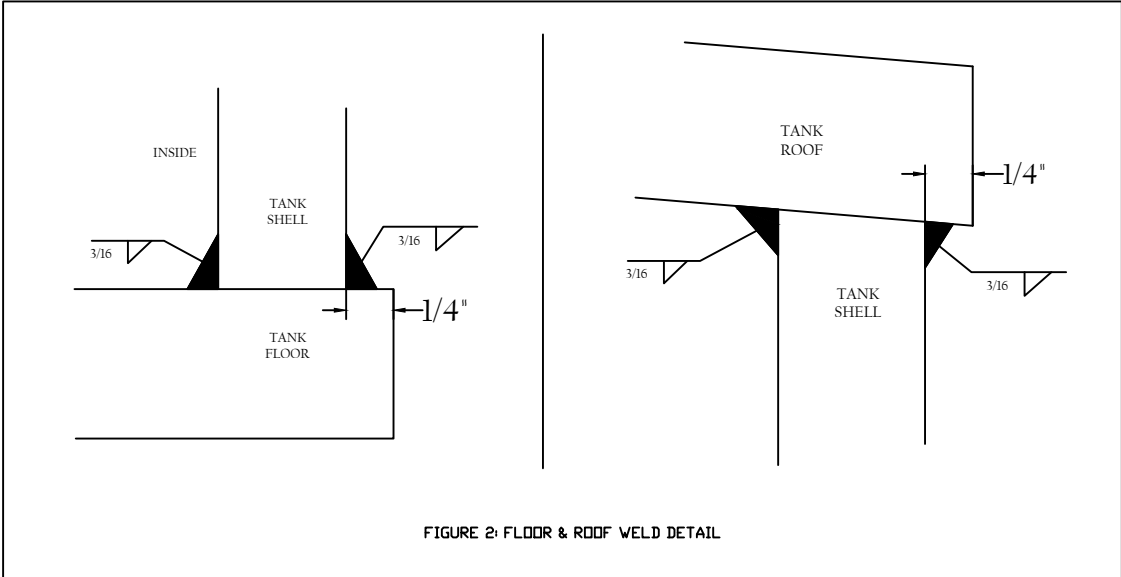
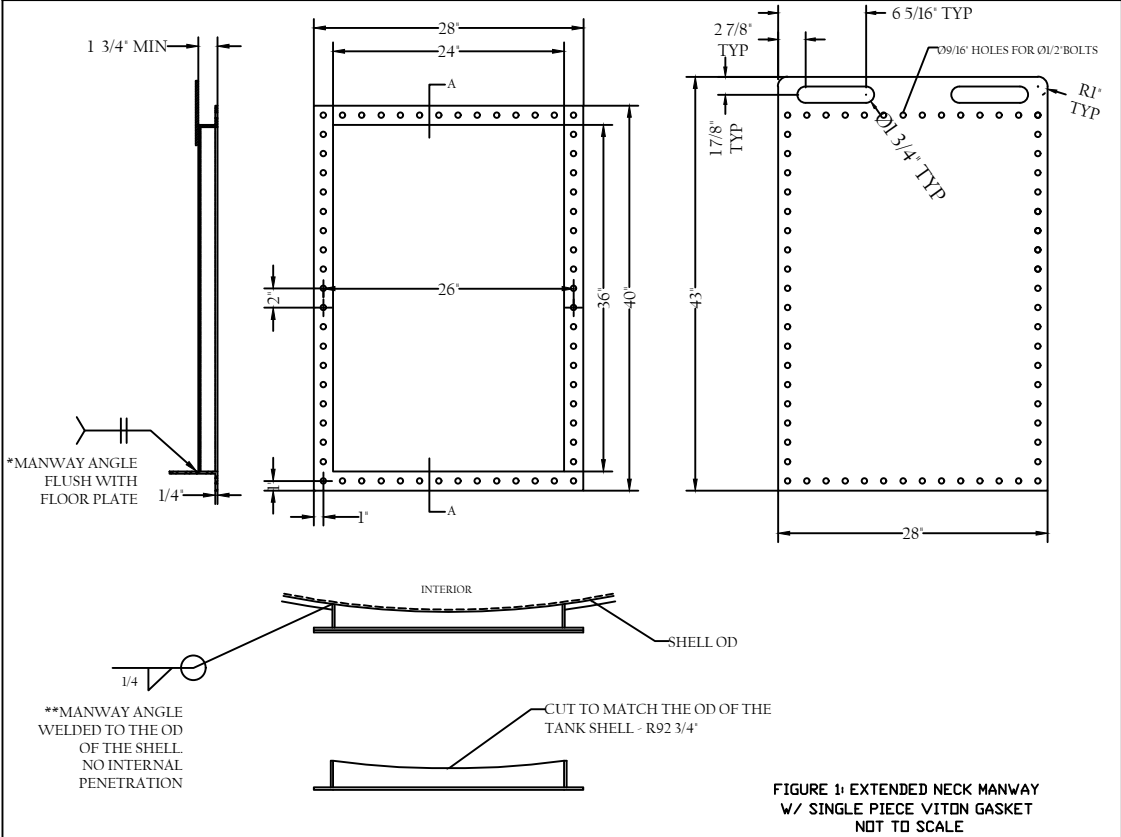
DATE 05/8/19

P3365

SHEET 1 OF 2

R

R0



DRAGON PRODUCTS, LTD.

JOB NO.  
P3365

THIS DRAWING AND INFORMATION CONTAINED HEREIN IS THE PROPERTY OF DRAGON PRODUCTS, LTD. AND CANNOT BE COPIED OR REPRODUCED WITHOUT THE WRITTEN CONSENT OF DRAGON PRODUCTS, LTD.

BEAUMONT TEXAS  
1000BBL GUNBARREL TANK  
SALES DRAWING

DR. JGM CH. APP. GRM

SCALE NTS  
DATE 05/8/19

P3365

SHEET 2 OF 2

R  
R0