

"RELEASED FOR FABRICATION"

**DESIGN CONDITIONS**  
P1 = 0.0625 PSIG  
P2 = 65 PSIG  
T1 = 100°F  
T2 = 210°F  
T3 = 120°F  
TA = 100°F  
SG = 1.502  
ELEV = 2851 FASL  
Q = 458 MSCF/D

- NOTES:**
- CONTROL TUBING 304 SS
  - XP WIRING & CONDUIT, AS PER NEC, CLS 1 DIV 2 GRP D
  - PIPING ≥ 2" TO BE 150# ASA MINIMUM
  - PIPING AS PER B31.3 (HB-02, ASME SECT IX, EXCLUDING X-RAY
  - PIPING ≤ 1 1/2" TO BE SCHEDULE 80 SMLS. A-106
  - PAINT DESERT TAN (HY-BON STANDARD)
  - LAST LINE # 0126
  - LAST INSTRUMENT # 0135
  - SMOOTH DECK PLATE, DRIP UP, DRAINS

NO.	BY	DATE	DESCRIPTION	CHK'D	APP'D
0	TBB	04/18/11	ISSUED FOR CONSTRUCTION	SE	SE
A	TBB	03/30/11	ISSUED FOR APPROVAL	SE	SE

REVISIONS

**HY-BON**  
ENGINEERING COMPANY, INC.  
THIS DRAWING IS PROPERTY OF  
HY-BON ENGINEERING CO., INC.  
2404 COMMERCE ST.  
MELAND, TEXAS 76703  
This drawing is issued in strict confidence and shall not, without the prior written permission of Hy-Bon Engineering Co., be reproduced, copied, or used for any purpose whatsoever except the manufacture of articles for Hy-Bon Engineering Co.

**PIPING & INSTRUMENT DIAGRAM**  
MODEL:  
HBB-HG17178VIE-100-18D

DRAWN:	DATE:	SCALE:	CHK'D:	APP'D:	W.O. NO.:
JDB	03/16/11	NONE	SE	SE	105388

CUSTOMER:  
**OXY**  
DWG. NO.: 105388-01-001 1 OF 2 REV. 0



CUSTOMER CONNECTIONS

MARK	SIZE/RATING	SERVICE
A	6" 150# RF	GAS INLET
B	2" 150# RF	GAS DISCHARGE
C	1" F/NPT	MANUAL DRAIN
D	1" F/NPT	LUBE OIL DRAIN
E	1" F/NPT	AUTO DRAIN
F	1" F/NPT	SENSING LINE
G	2" F/NPT	SKID DRAIN

D-0103

GAS/OIL SEPARATOR  
24" O.D. X 55" S/H  
MAWP: 175 PSIG  
ASME SECT. 8 DIV. 1  
MODEL: A69-857  
ELEMENT: 43-1112  
CAPACITY: 30 GAL

F-0106

LUBE OIL FILTER  
HOUSING: B-LINE BL99-2  
ELEMENT: BALDWIN B7245  
20 MICRON

E-0105A

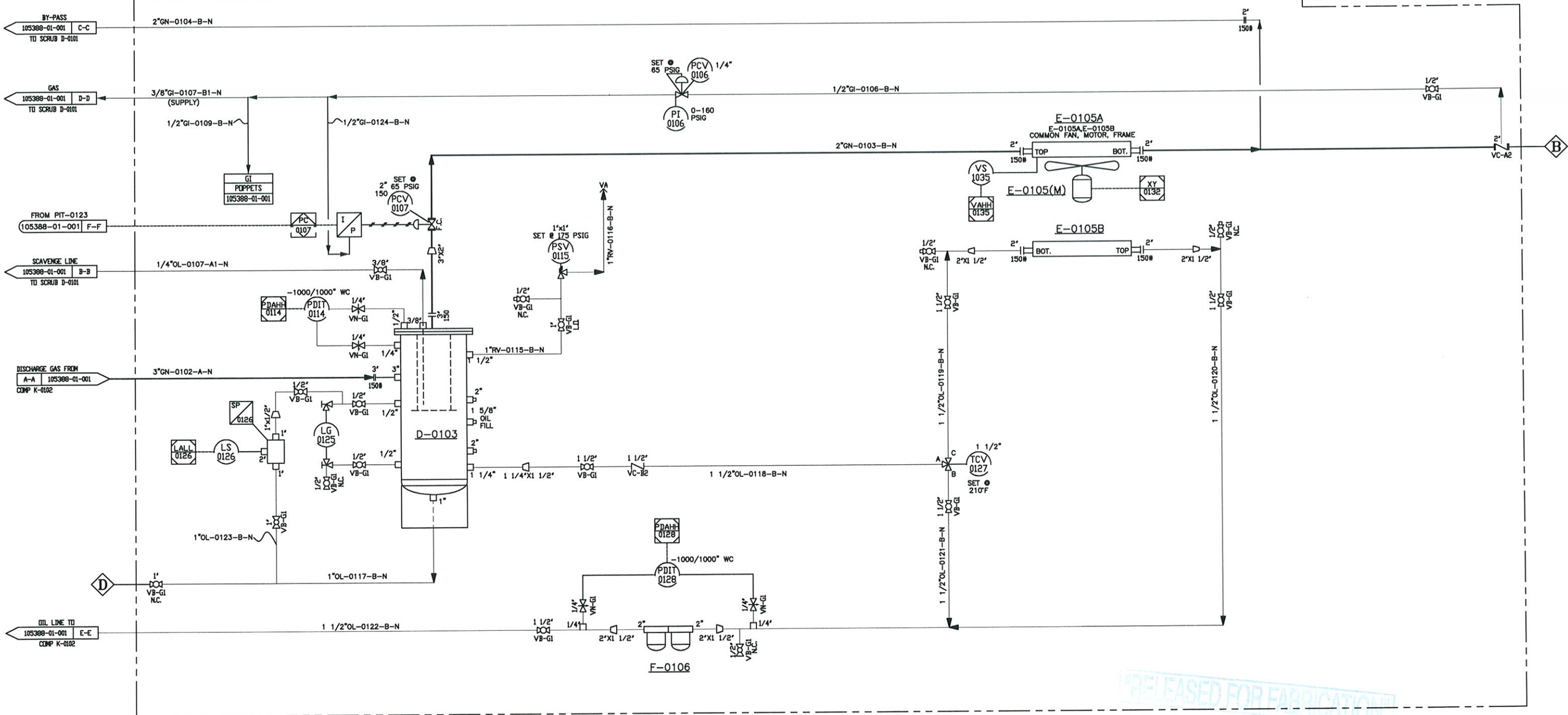
AFTER GASCOOLER  
MFG: ACE  
FLOW: 347.22 SCFM  
DUTY: 238,865 BTU/HR  
HEADERS: SA516-70  
TUBES: SA214  
DESIGN PRESSURE: 215 PSIG @ -20/350°F  
TEMP IN/OUT: 210/120°F  
MODEL: C42M-5

E-0105B

OIL COOLER  
MFG: ACE  
FLOW: 25.5 GPM  
DUTY: 97,200 BTU/HR  
HEADERS: SA516-70  
TUBES: SA214  
DESIGN PRESSURE: 215 PSIG @ -20/350°F  
EST WGT: 1831 LBS  
MODEL: C42M-5

E-0105(M)

COOLER FAN DRIVER  
HP: 5  
RPM: 1200  
460VAC/3Ø/60HZ  
TEFC  
CL 1, DIV 2



DESIGN CONDITIONS

P1 = 0.0625 PSIG  
P2 = 65 PSIG  
T1 = 100°F  
T2 = 210°F  
T3 = 120°F  
TA = 100°F  
SG = 1.502  
ELEV = 2851 FASL  
Q = 458 MSCF/D

NOTES:

- CONTROL TUBING 304 SS
- XP WIRING & CONDUIT, AS PER NEC, CLS 1 DIV 2 GRP D
- PIPING > 2" TO BE 150# ASA MINIMUM
- PIPING AS PER B31.3 (HB-02, ASME SECT IX, EXCLUDING
- PIPING < 1 1/2" TO BE SCHEDULE 80 SMLS. A-106
- PAINT DESERT TAN (HY-BON STANDARD)
- LAST INSTRUMENT # 0135
- SMOOTH DECK PLATE, DRIP LIP, DRAINS

NO.	BY	DATE	DESCRIPTION	CHK'D	APP'D
0	TBB	04/18/11	ISSUED FOR CONSTRUCTION	SE	SE
A	TBB	03/30/11	ISSUED FOR APPROVAL	SE	SE
REVISIONS					

**HY-BON**  
ENGINEERING COMPANY, INC.  
2404 COMMERCE ST.  
MELAND, TEXAS 79703  
This drawing is issued in strict confidence and shall not, without the prior written permission of Hy-Bon Engineering Co., be reproduced, copied, or used for any purpose whatsoever except the manufacture of articles for Hy-Bon Engineering Co.

PIPING & INSTRUMENT DIAGRAM

MODEL:  
HBB-HG1718VIE-100-18D

DRAWN:	DATE:	SCALE:	CHK'D:	APP'D:	W.O. NO.:
JDB	03/16/11	NONE	SE	SE	105388

CUSTOMER:		DWG. NO.:		2 OF 2	
OXY		105388-01-002		REV. 0	