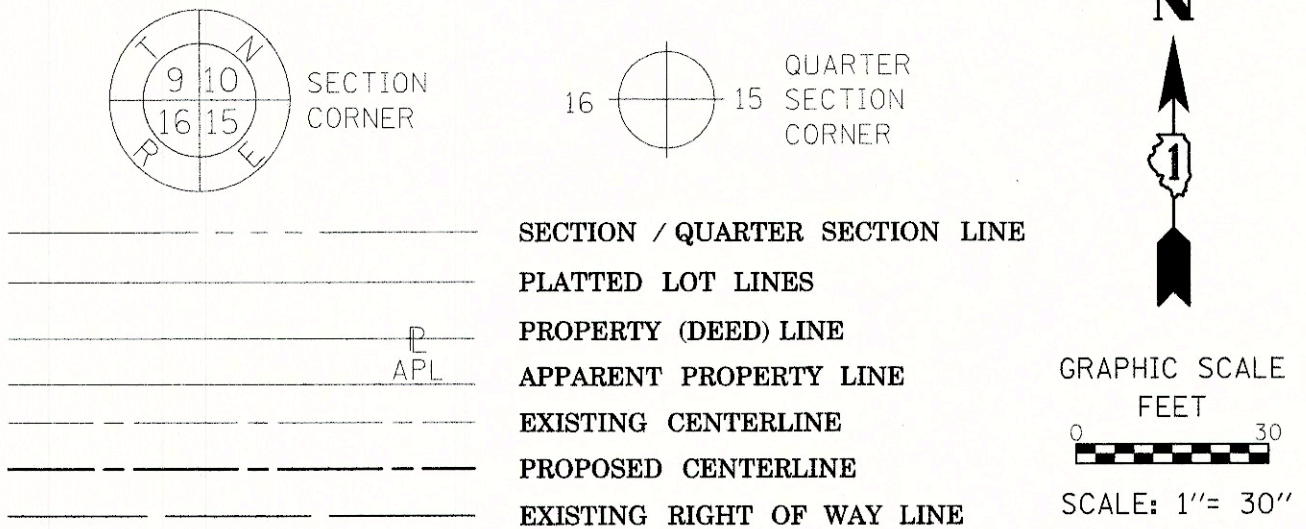


PART OF THE NORTHWEST QUARTER OF SECTION 15, TWP. 45 N., R. 10 E. OF THE 3RD. P.M., IN LAKE COUNTY, ILLINOIS.

LEGEND



WISCONSIN CENTRAL LTD.  
(A.K.A. CANADIAN NATIONAL RAILWAY)

ILLINOIS ROUTE 83

ROLLINS ROAD  
(A.K.A. COUNTY HIGHWAY 31)

PIN 06-15-100-063  
OWNER: SIDA ENTERPRISES LTD  
DEED DOC. NO. 2955317  
RECORDED 10-19-1990

OWNER: COUNTY OF LAKE  
DEED DOC. NO. 6996843  
RECORDED 5-28-2013

COORDINATE TABLE ILLINOIS STATE PLANE COORDINATE SYSTEM, EAST ZONE, NAD 83 (2011 ADJUSTMENT)				
PT#	STATION	OFFSET	NORTHING	EASTING
01	217+16.08	69.75 LT	2081220.8471	1057388.6125
02	217+49.07	240.00 LT	2081390.8634	1057354.4229
03	217+66.63	240.00 LT	2081397.5371	1057370.6653
04	217+59.67	204.48 LT	2081362.0330	1057377.7290
05	217+46.24	129.67 LT	2081287.7379	1057393.7364
06	217+85.75	60.00 LT	2081238.3100	1057456.7599
07	219+16.75	60.00 LT	2081288.0967	1057577.9304
08	219+16.75	40.00 LT	2081269.5974	1057585.5314
09	217+40.62	40.00 LT	2081202.6589	1057422.6172
10	219+16.75	240.00 LT	2081454.5905	1057509.5211

PARCEL NUMBER	TOTAL HOLDINGS ACRES	PART TAKEN ACRES	AREA IN EXISTING R.O.W. ACRES	REMAINDER AREA ACRES	EASEMENT AREA		PARCEL INDEX NUMBER	ACQUIRED BY
					ACRES	SQUARE FEET		
0001	0.854	0.206	N/A	0.000	N/A	N/A	06-15-100-025	
0001 EXCESS		0.648	N/A		N/A	N/A		

THIS IS TO CERTIFY THAT I, KENNETH J. RASMUSSEN, AN ILLINOIS PROFESSIONAL LAND SURVEYOR, (WE, CHRISTOPHER B. BURKE ENGINEERING, LTD., AN ILLINOIS PROFESSIONAL DESIGN FIRM LAND SURVEYING CORPORATION, NUMBER 184.001175-0014,) HAVE SURVEYED THE PLAT OF HIGHWAYS SHOWN HEREON IN SECTION 15, TOWNSHIP 45 NORTH, RANGE 10 EAST OF THE THIRD PRINCIPAL MERIDIAN, LAKE COUNTY, THAT THE SURVEY IS TRUE AND COMPLETE AS SHOWN TO THE BEST OF MY KNOWLEDGE AND BELIEF, THAT THE PLAT CORRECTLY REPRESENTS SAID SURVEY, THAT ALL MONUMENTS FOUND AND ESTABLISHED ARE OF PERMANENT QUALITY AND OCCUPY THE POSITIONS SHOWN THEREON AND THAT THE MONUMENTS ARE SUFFICIENT TO ENABLE THE SURVEY TO BE RETRACED, MADE FOR THE DEPARTMENT OF TRANSPORTATION, STATE OF ILLINOIS.

DATED AT ROSEMONT, ILLINOIS THIS 24 DAY OF *February* 2024  
ILLINOIS PROFESSIONAL LAND SURVEYOR NO. 35-320203  
LICENSE EXPIRATION DATE: 11-30-2024

THIS PROFESSIONAL SERVICE CONFORMS TO THE CURRENT ILLINOIS MINIMUM STANDARDS FOR A BOUNDARY SURVEY.

NOTE:  
ALL DIMENSION ARE MEASURED UNLESS OTHERWISE SPECIFIED  
BEARINGS AND DISTANCES SHOWN HEREON ARE ON THE ILLINOIS STATE PLANE COORDINATE SYSTEM, EAST ZONE, NORTH AMERICAN DATUM OF 1983 (2011 ADJUSTMENT) "GRID".  
ALL MEASURED AND CALCULATED DISTANCES ARE "GRID" NOT "GROUND". TO OBTAIN GROUND DISTANCES, DIVIDE GRID DISTANCES BY THE COMBINATION FACTOR OF 0.99994379923.  
AREAS SHOWN ON THIS PLAT ARE "GROUND"

DATE: REVISIONS:

CHRISTOPHER B. BURKE ENGINEERING, LTD.  
9575 West Higgins Road, Suite 600  
Rosemont, Illinois 60018  
(847) 823-0500

EXCESS PARCEL PLAT  
LAKE COUNTY  
DIVISION OF TRANSPORTATION  
ROLLINS ROAD (C.H. 31)  
JOB NO. 99-00080-47-WR LAKE COUNTY  
PROJECT ROLLINS ROAD  
STATION 215+87.30 TO STATION 269+79  
SCALE: 1"=30' SHEET NO. 1 OF 1

LAKE COUNTY DIVISION OF TRANSPORTATION  
600 WEST WINCHESTER ROAD  
LIBERTYVILLE, ILLINOIS 60048